

T7N, R80W, 6th P.M.

Sandridge Exploration & Production, LLC

Bottom Hole Location, EVANS 0780 8-21H located as shown in the SE1/4SW1/4 of SECTION 21, T7N, R80W, 6th P.M., Jackson County, Colorado.

BASIS OF BEARINGS:

US STATE PLANE 1983
CO NORTH 0501 GRID

BASIS OF ELEVATION

SPOT ELEVATION AT THE NE CORNER OF SECTION 21, T7N, R80W, 6th PM, TAKEN FROM THE COALMONT QUADRANGLE, USGS 7.5 MIN QUAD (TOPOGRAPHIC MAP) WITH SAID ELEVATION MARKED AS BEING 8223 FEET.

SURFACE USE

AGRICULTURAL/GRAZING

GRAPHIC SCALE 1"=1000'

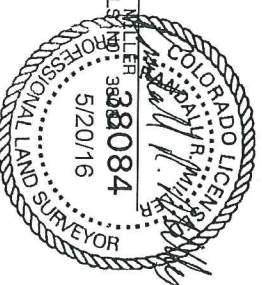


CERTIFICATE

THIS IS TO CERTIFY THAT THE ABOVE PLAT WAS PREPARED FROM FIELD NOTES OF ACTUAL SURVEYS MADE BY ME OR UNDER MY SUPERVISION AND THAT THE SAME ARE TRUE AND CORRECT TO THE BEST OF MY KNOWLEDGE AND BELIEF.

RANDALL R. MILLER
COLORADO PL. SURV. 388084

5/20/16



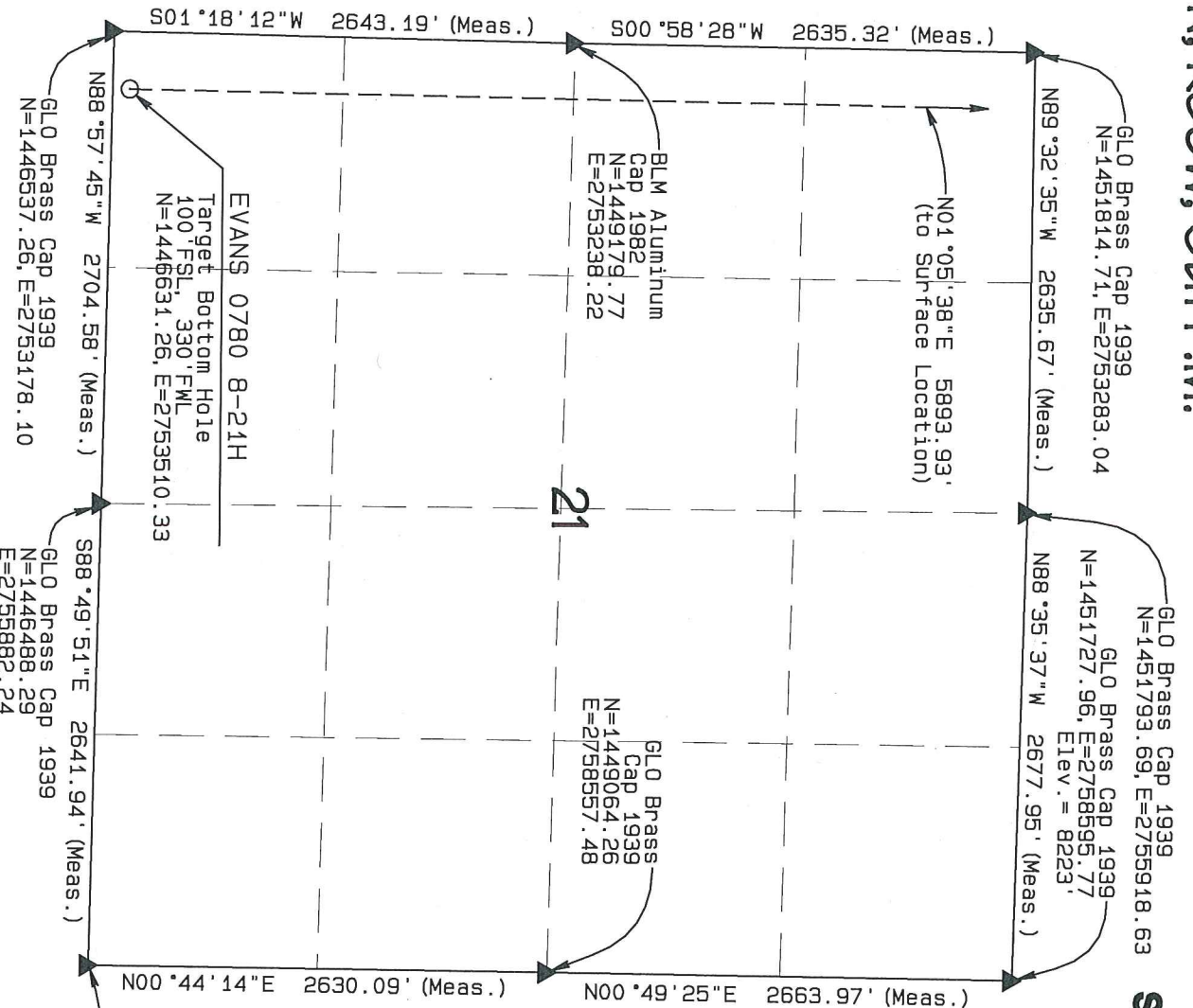
NORTH PARK ENGINEERING & CONSULTING, INC.
P.O. Box 395
WALDEN, CO 80480
(970) 723-3725

90° SYMBOL
FOUND CORNER
PROPOSED WELL
PROPOSED BHL/LPL

LEGEND

NAD 83 (SURFACE LOCATION)	
LATITUDE=40.574152°N	PDOP=1.417
LONGITUDE=106.382217°W	
NAD 83 (TARGET BOTTOM HOLE)	
LATITUDE=40.556018°N	
LONGITUDE=106.387085°W	
NAD 83 (LANDING POINT LOCATION)	
LATITUDE=40.572196°N	
LONGITUDE=106.386892°W	

DATE OF FIELD WORK: MAY 3, 2016
DRAWING COMPLETION: MAY 19, 2016
SURVEYED BY: ADL
DRAWN BY: TKH
CHECKED BY: RMH



T7N, R80W, 6th P.M.

GLO Brass Cap 1939
PLS 17492.2008
N=1457081.47, E=2753355.52

N89°01'04"E 2660.60' (Meas.)

Aluminum Cap PLS 38084
N=1457126.92, E=2756016.35
GLO Brass Cap 1939
N=1457172.68, E=2758675.95
N89°01'05"E 2660.61' (Meas.)

GLO Brass
Cap 1939
N=1454447.37
E=2758635.58

EVANS 0780 8-21H

Surface Location
Elev. Ungraded
Ground=8135'
1423' FSL, 1626' FWL
N=1453224.12, E=2754928.85

EVANS 0780 8-21H

Landing Point Location
712' FSL, 330' FWL
N=1452524.12, E=2753622.84

501°05'38"W 5893.93'
(to Target Bottom Hole)

N89°32'35"W 2635.67' (Meas.)
GLO Brass Cap 1939
N=1451814.71, E=2753283.04

N88°35'37"W 2677.95' (Meas.)
GLO Brass Cap 1939
N=1451793.69
E=2755918.63

GLO Brass Cap 1939
N=1451727.96, E=2758695.77 Elev. = 8223'

N00°47'18"E 5267.26' (Meas.)

N00°50'19"E 2719.71' (Meas.)

N00°50'55"E 2725.60' (Meas.)

Surface Location, EVANS 0780 8-21H located
as shown in the NE1/4SW1/4 of SECTION 16., T7N,
R80W, 6th P.M., Jackson County, Colorado.

Sandridge Exploration & Production, LLC

BASIS OF BEARINGS:

US STATE PLANE 1983
CO NORTH 0501 GRID

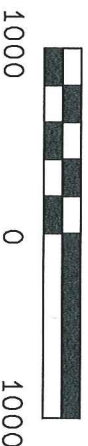
BASIS OF ELEVATION

SPOT ELEVATION AT THE NE CORNER OF SECTION 21,
T7N, R80W, 6TH PM, TAKEN FROM THE COALMONT
QUADRANGLE, USGS 7.5 MIN QUAD (TOPOGRAPHIC MAP)
WITH SAID ELEVATION MARKED AS BEING 8223 FEET.

SURFACE USE

AGRICULTURAL/GRAZING

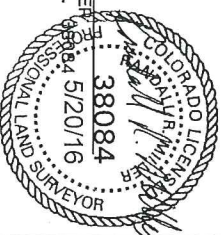
GRAPHIC SCALE 1"=1000'



CERTIFICATE

THIS IS TO CERTIFY THAT THE ABOVE PLAT WAS PREPARED FROM
FIELD NOTES OF ACTUAL SURVEYS MADE BY ME OR UNDER MY
SUPERVISION AND THAT THE SAME ARE TRUE AND CORRECT TO THE
BEST OF MY KNOWLEDGE AND BELIEF.

RANDALL R. MILLER
COLORADO PLS NO. 38084 5/20/16



LEGEND

90° SYMBOL
FOUND CORNER
PROPOSED WELL
PROPOSED BHL/LPL

NAD 83 (SURFACE LOCATION)	
LATITUDE=40.574152° N	POOP=1.417
LONGITUDE=106.382217° W	
NAD 83 (TARGET BOTTOM HOLE)	
LATITUDE=40.556018° N	
LONGITUDE=106.387085° W	
NAD 83 (LANDING POINT LOCATION)	
LATITUDE=40.572196° N	
LONGITUDE=106.386892° W	

NORTH PARK ENGINEERING & CONSULTING, INC.

P.O. BOX 395
MAIDEN, CO 80480
(970) 723-3725

DATE OF FIELD WORK: MAY 3, 2016
DRAWN BY: TKH
CHECKED BY: RRM