

SUMMARY CEMENT REPORT

The Road to Excellence Starts with Safety

Sold To #: 374215		Ship To #: 3696139		Quote #:		Sales Order #: 0903431706					
Customer: CUB CREEK ENERGY LLC				Customer Rep: Chris Montoya							
Well Name: VAIL			Well #: 3		API/UWI #: 05-123-42262-00						
Field: WATTENBERG		City (SAP): JOHNSTOWN		County/Parish: WELD		State: COLORADO					
Legal Description: SW NW-12-4N-68W-2305FNL-249FWL											
Contractor:				Rig/Platform Name/Num: Savanna 802							
Job BOM: 7523											
Well Type: HORIZONTAL OIL											
Sales Person: HALAMERICA\HB71271				Srvc Supervisor: Nathaniel Moore							
Job											
Formation Name											
Formation Depth (MD)		Top		Bottom							
Form Type				BHST							
Job depth MD		11540ft		Job Depth TVD							
Water Depth				Wk Ht Above Floor							
Perforation Depth (MD)		From		To							
Well Data											
Description	New / Used	Size in	ID in	Weight lbm/ft	Thread	Grade	Top MD ft	Bottom MD ft	Top TVD ft	Bottom TVD ft	
Casing		9.625	8.921	36			0	1547	0	1547	
Casing		5.5	4.892	17			0	11531	0	6863	
Open Hole Section			8.75				1547	11540	1533	6863	
Tools and Accessories											
Type	Size in	Qty	Make	Depth ft		Type	Size in	Qty	Make		
Guide Shoe	5.5			11540		Top Plug	5.5		HES		
Float Shoe	5.5					Bottom Plug	5.5		HES		
Float Collar	5.5					SSR plug set	5.5		HES		
Insert Float	5.5					Plug Container	5.5		HES		
Stage Tool	5.5					Centralizers	5.5		HES		
Fluid Data											
Stage/Plug #: 1											
Fluid #	Stage Type	Fluid Name			Qty	Qty UoM	Mixing Density lbm/gal	Yield ft3/sack	Mix Fluid Gal	Rate bbl/min	Total Mix Fluid Gal
1	Fresh Water Spacer				20	bbl	8.33				

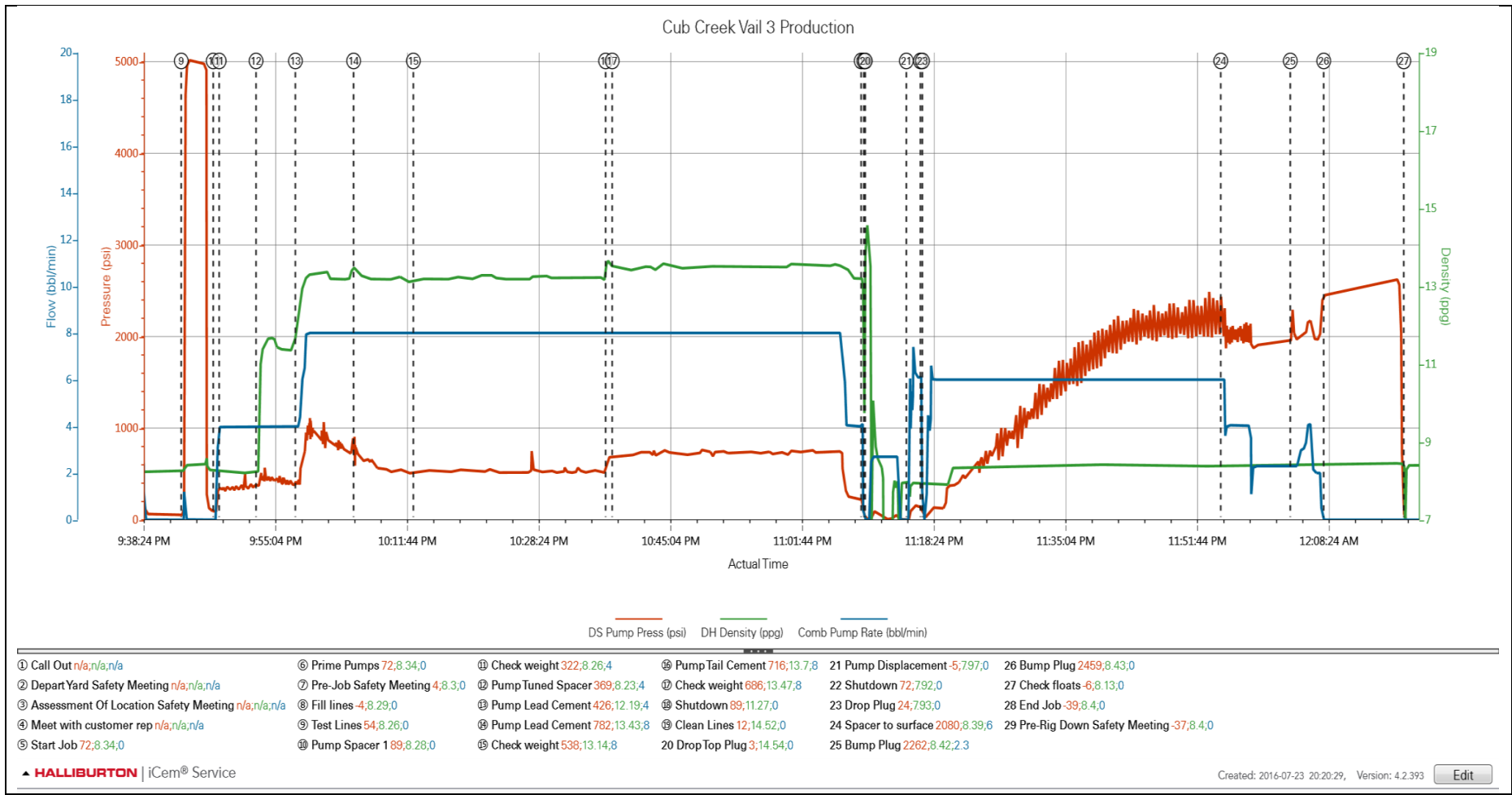
Fluid #	Stage Type	Fluid Name	Qty	Qty UoM	Mixing Density lbm/gal	Yield ft3/sack	Mix Fluid Gal	Rate bbl/min	Total Mix Fluid Gal
2	11.5 lb/gal Tuned Spacer III	Tuned Spacer III	25	bbl	11.5	3.74			
Fluid #	Stage Type	Fluid Name	Qty	Qty UoM	Mixing Density lbm/gal	Yield ft3/sack	Mix Fluid Gal	Rate bbl/min	Total Mix Fluid Gal
3	13.2# ElastiCem w/o CBL	ELASTICEM™ SYSTEM	200	sack	13.2	1.57		5	7.51
Fluid #	Stage Type	Fluid Name	Qty	Qty UoM	Mixing Density lbm/gal	Yield ft3/sack	Mix Fluid Gal	Rate bbl/min	Total Mix Fluid Gal
4	13.2# ElastiCem	ELASTICEM™ SYSTEM	920	sack	13.2	1.57		5	7.51
Fluid #	Stage Type	Fluid Name	Qty	Qty UoM	Mixing Density lbm/gal	Yield ft3/sack	Mix Fluid Gal	Rate bbl/min	Total Mix Fluid Gal
5	13.5# EconoCem	ECONOCEM™ SYSTEM	865	sack	13.5	1.68		5	8
Fluid #	Stage Type	Fluid Name	Qty	Qty UoM	Mixing Density lbm/gal	Yield ft3/sack	Mix Fluid Gal	Rate bbl/min	Total Mix Fluid Gal
6	Fresh Water Displacement		267	bbl	8.4				
Cement Left In Pipe		Amount	ft		Reason			Shoe Joint	

20 bbl spacer to surface

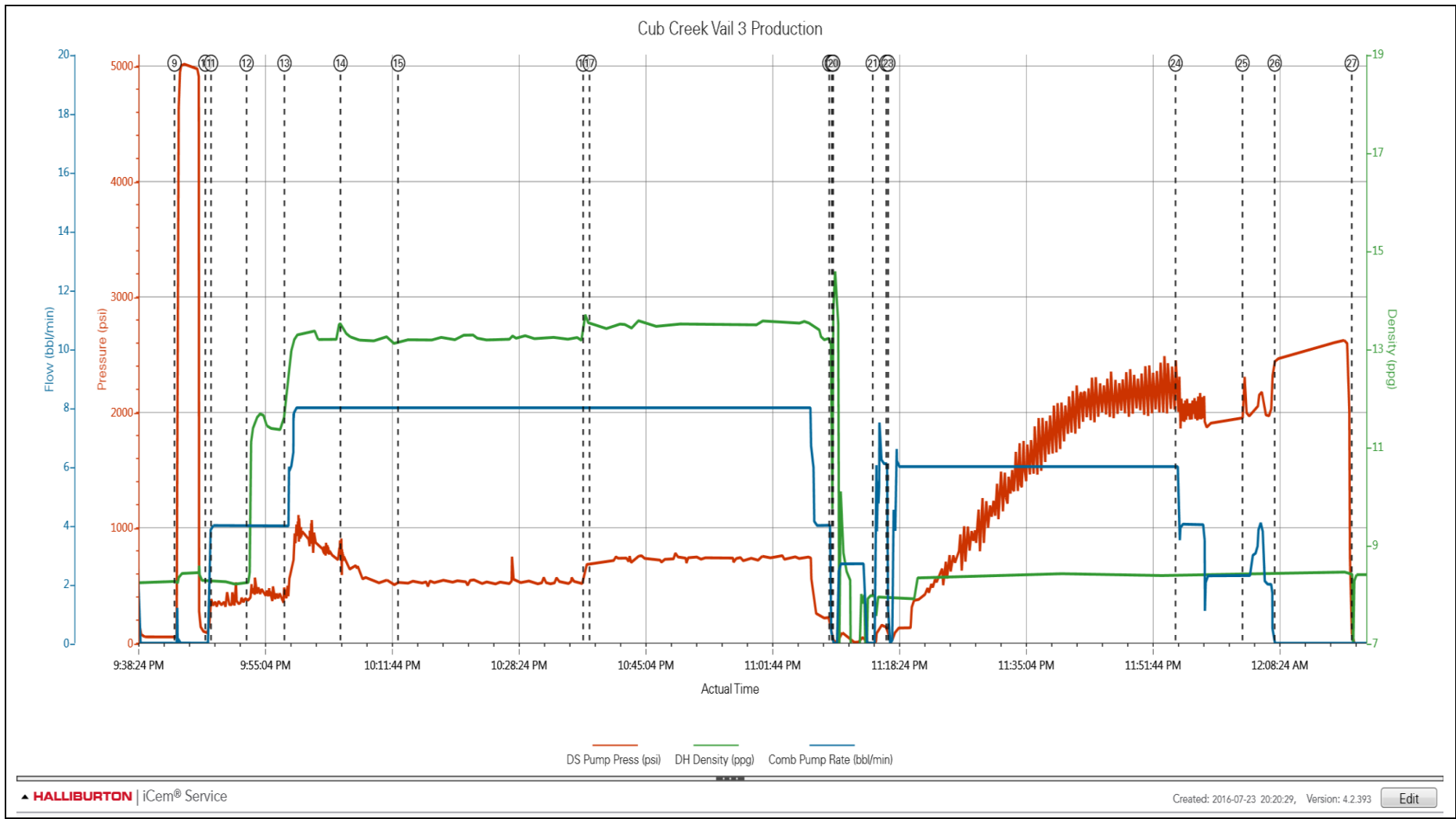
Pumped 10 bbl wet shoe with MMCR

3.0 Attachments

3.1 Case 1-Custom Results.png



3.2 Case 1-Custom Results (1).png



3.3 Case 1-Custom Results (2).png

