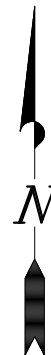
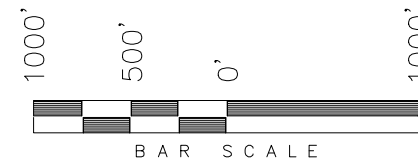


2013 Aluminum Cap 28285  
LATITUDE: 40° 48' 59.28"  
LONGITUDE: -103° 53' 56.80"

2010 Aluminum Cap 37897  
LATITUDE: 40° 48' 59.98"  
LONGITUDE: -103° 52' 48.00"

## WHITING OIL & GAS CORP.

WELL LOCATION, RAZOR 29H-3214,  
LOCATED AS SHOWN IN THE SE 1/4  
NE 1/4 OF SECTION 29, T10N, R58W,  
6th P.M. WELD COUNTY, COLORADO.



### NOTES:

1. Bearings are based on Global Positioning Satellite Observations.
2. G.P.S. Operator: C.D. Slaugh, (PDOP) = 1.4
3. Monument Coordinates are Reported in NAD 83.

2013 Aluminum Cap 28285  
LATITUDE: 40° 48' 33.80"  
LONGITUDE: -103° 52' 47.59"



= SECTION CORNERS LOCATED

BASIS OF ELEV; Elevations are based  
on an N.G.S. OPUS Correction. LOCATION:  
LAT. 40°46'03.41" LONG. 103°46'26.97" (Tristate  
Aluminum Cap) NAVD 88 Elev. 4750.22'

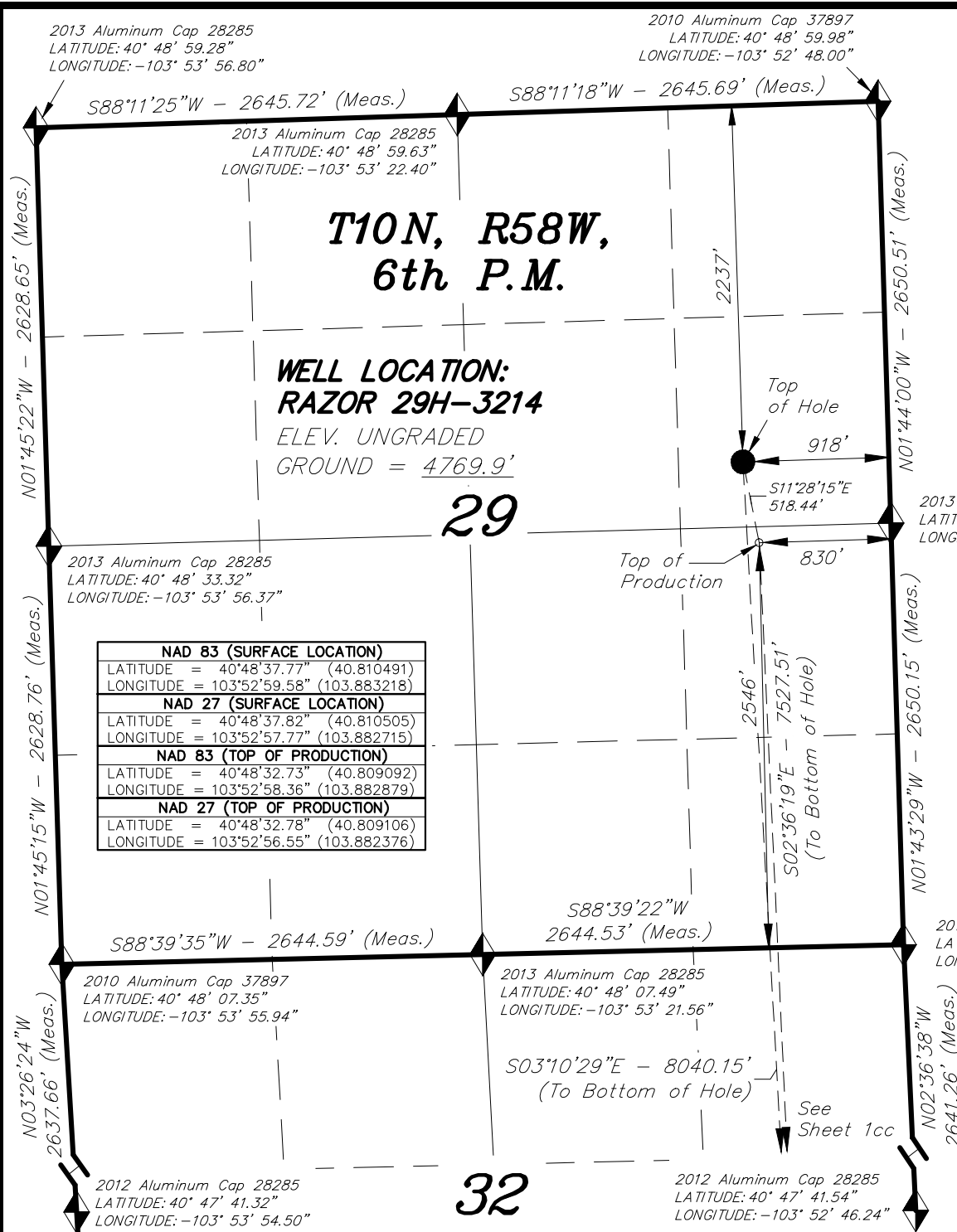
THIS IS TO CERTIFY THAT THE ABOVE PLAT WAS  
PREPARED FROM FIELD NOTES OF REAL SURVEYS  
MADE BY ME OR UNDER MY SUPERVISION. THE  
LOCATION HAS BEEN STAKED ON THE GROUND AS  
SHOWN ON THE PLAT, AND THAT THE SAME ARE  
TRUE AND CORRECT TO THE BEST OF MY  
KNOWLEDGE AND BELIEF. 07-08-16

REGISTERED LAND SURVEYOR  
REGISTRATION NO. 30125  
STATE OF COLORADO

## TRI STATE LAND SURVEYING & CONSULTING

180 NORTH VERNAL AVE. - VERNAL, UTAH 84078  
(435) 781-2501

DATE SURVEYED: 06-09-16	SURVEYED BY: C.D.S.	SHEET  1c
DATE DRAWN: 07-08-16	DRAWN BY: F.T.M.	
REVISED:	SCALE: 1" = 1000'	



**T10N, R58W,  
6th P.M.**

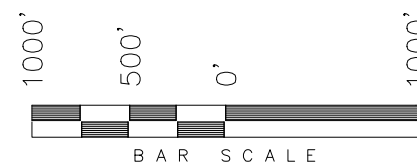
**29**

2013 Aluminum Cap 28285  
LATITUDE: 40° 48' 33.80"  
LONGITUDE: -103° 52' 47.59"

See  
Sheet 1c

**WHITING OIL & GAS CORP.**

TARGET BOTTOM HOLE,  
RAZOR 29H-3214, LOCATED AS  
SHOWN IN THE SE 1/4 SE 1/4 OF  
SECTION 32, T10N, R58W, 6th P.M.  
WELD COUNTY, COLORADO.



**NOTES:**

1. Bearings are based on Global Positioning Satellite Observations.
2. Monument Coordinates are Reported in NAD 83.

◆ = SECTION CORNERS LOCATED

2012 Aluminum Cap 28285  
LATITUDE: 40° 47' 41.54"  
LONGITUDE: -103° 52' 46.24"

THIS IS TO CERTIFY THAT THE ABOVE PLAT WAS  
PREPARED FROM FIELD NOTES OF REAL SURVEYS  
MADE BY ME OR UNDER MY SUPERVISION. THE  
LOCATION HAS BEEN STAKED ON THE GROUND AS  
SHOWN ON THE PLAT, AND THAT THE SAME ARE  
TRUE AND CORRECT TO THE BEST OF MY  
KNOWLEDGE AND BELIEF. 07-08-16

REGISTERED LAND SURVEYOR  
REGISTRATION NO. 30125  
STATE OF COLORADO

**TRI STATE LAND SURVEYING & CONSULTING**

180 NORTH VERNAL AVE. - VERNAL, UTAH 84078  
(435) 781-2501

DATE SURVEYED: 06-09-16	SURVEYED BY: C.D.S.	SHEET  <b>1cc</b>
DATE DRAWN: 07-08-16	DRAWN BY: F.T.M.	
REVISED:	SCALE: 1" = 1000'	

NAD 83 (BOTTOM HOLE LOCATION)	
LATITUDE	= 40°47'18.40" (40.788444)
LONGITUDE	= 103°52'55.70" (103.882139)
NAD 27 (BOTTOM HOLE LOCATION)	
LATITUDE	= 40°47'18.45" (40.788457)
LONGITUDE	= 103°52'53.89" (103.881636)

**TARGET BOTTOM HOLE:  
RAZOR 29H-3214**

Bottom  
of Hole  
791'

300'

2014 Aluminum Cap 38285  
LATITUDE: 40° 47' 15.37"  
LONGITUDE: -103° 53' 19.19"

2014 Aluminum Cap 38285  
LATITUDE: 40° 47' 15.46"  
LONGITUDE: -103° 52' 45.31"

2014 Aluminum Cap 38285  
LATITUDE: 40° 47' 15.28"  
LONGITUDE: -103° 53' 53.06"

S88°45'11"W - 2606.28' (Meas.)

S88°45'49"W - 2606.39' (Meas.)

N02°36'26"W - 2641.21' (Meas.)

N02°36'38"W - 2641.26' (Meas.)

N01°43'29"W - 2650.15' (Meas.)

N01°45'15"W - 2628.76' (Meas.)

N03°26'24"W - 2637.66' (Meas.)

N03°26'32"W - 2637.92' (Meas.)

2012 Aluminum Cap 28285  
LATITUDE: 40° 47' 41.32"  
LONGITUDE: -103° 53' 54.50"

2010 Aluminum Cap 37897  
LATITUDE: 40° 48' 07.35"  
LONGITUDE: -103° 53' 55.94"

2013 Aluminum Cap 28285  
LATITUDE: 40° 48' 07.49"  
LONGITUDE: -103° 53' 21.56"

S88°39'35"W - 2644.59' (Meas.)

S88°39'22"W - 2644.53' (Meas.)

**32**

S03°10'29"E - 8040.15'  
(From Top of Hole)

S02°36'19"E - 7527.51'  
(From Top of Production)