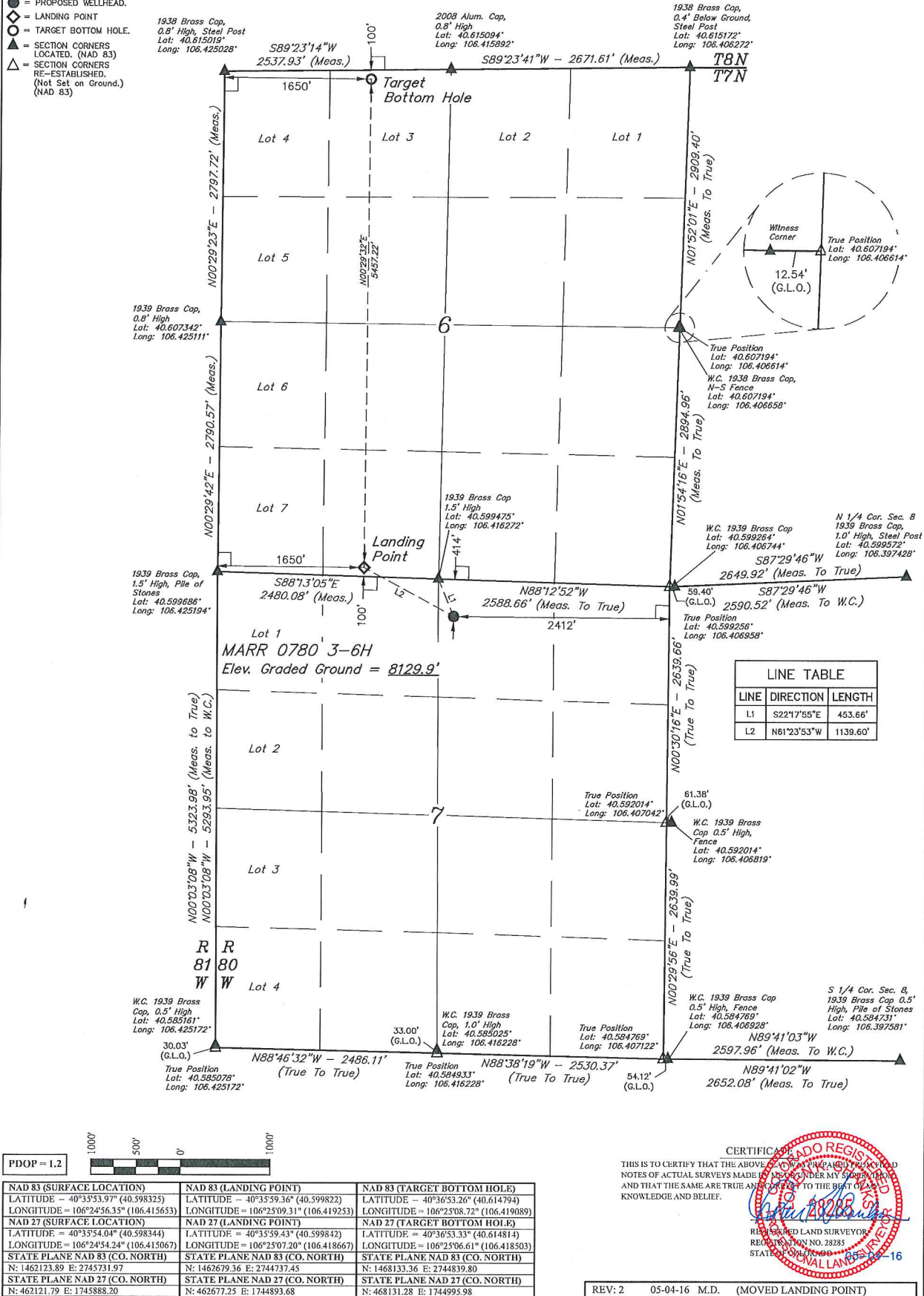


*T7N, R80W, 6th P.M.*

- L = 90° SYMBOL  
 ● = PROPOSED WELLHEAD.  
 ◆ = LANDING POINT  
 ○ = TARGET BOTTOM HOLE.  
 ▲ = SECTION CORNERS  
 LOCATED. (NAD 83)  
 △ = SECTION CORNERS  
 RE-ESTABLISHED.  
 (Not Set on Ground.)  
 (NAD 83)



CERTIFICATE

THIS IS TO CERTIFY THAT THE ABOVE PLAN WAS PREPARED FROM THE  
NOTES OF ACTUAL SURVEYS MADE IN MY OFFICE UNDER MY SUPERVISION  
AND THAT THE SAME ARE TRUE AND CORRECT TO THE BEST OF MY  
KNOWLEDGE AND BELIEF.

REGISTERED LAND SURVEYOR  
REGISTRATION NO. 28285  
STATE OF COLORADO

REV: 2 05-04-16 M.D. (MOVED LANDING POINT)

**SandRidge Exploration & Production, LLC**  
MARR 0780 3-6H  
NW 1/4 NE 1/4, SECTION 7, T7N, R80W, 6th P.M.  
JACKSON COUNTY, COLORADO

SURVEYED BY	C.M., G.W.	04-18-16	SCALE
DRAWN BY	M.D.	04-27-16	1" = 100'

**WELL LOCATION PLAT**

BASIS OF BEARINGS  
BASIS OF BEARINGS IS A G.P.S. OBSERVATION

BASIS OF ELEVATION

SPOT ELEVATION AT THE SOUTHEAST CORNER OF SECTION 29, T.7N, R.80W, 6th P.M. TAKEN FROM THE COALMONT QUADRANGLE, COLORADO, JACKSON COUNTY, 7.5 MINUTE QUAD. (TOPOGRAPHIC MAP) PUBLISHED BY THE UNITED STATES DEPARTMENT OF THE INTERIOR, GEOLOGICAL SURVEY. SAID ELEVATION IS MARKED AS BEING 8156 FEET.


**UINTAH**  
 ENGINEERING & LAND SURVEYING

**UELS, LLC**  
Corporate Office \* 85 South 200 East  
Vernal, UT 84078 \* (435) 789-1017