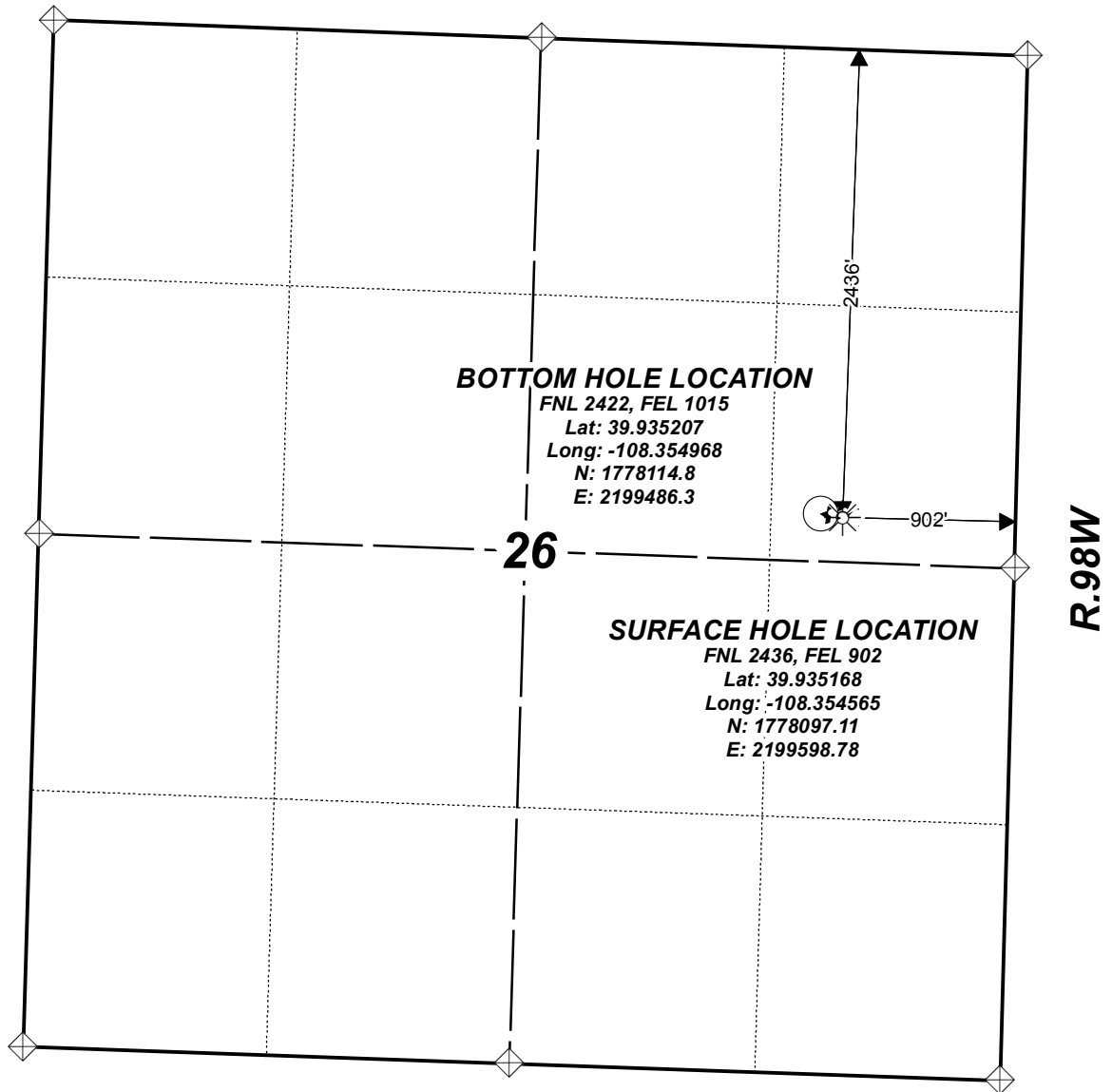


RGU 542-26-198

T.1S.



BOTTOM HOLE LOCATION

FNL 2422, FEL 1015

Lat: 39.935207

Long: -108.354968

N: 1778114.8

E: 2199486.3

26

SURFACE HOLE LOCATION

FNL 2436, FEL 902

Lat: 39.935168

Long: -108.354565

N: 1778097.11

E: 2199598.78

R.98W



0 500 1,000
Feet
1 in. = 950 ft.

Legend



Section Monument



Surface Hole Location



Bottom Hole Location



Map Date: 9/21/2016

Scale: 1" = 950'

Page 1 of 1

Well Location Plat

TEP Rocky Mountain LLC

SE1/4 NE1/4, SECTION 26,
T.1S., R.98W, of the 6th. P.M.
RIO BLANCO COUNTY, COLORADO