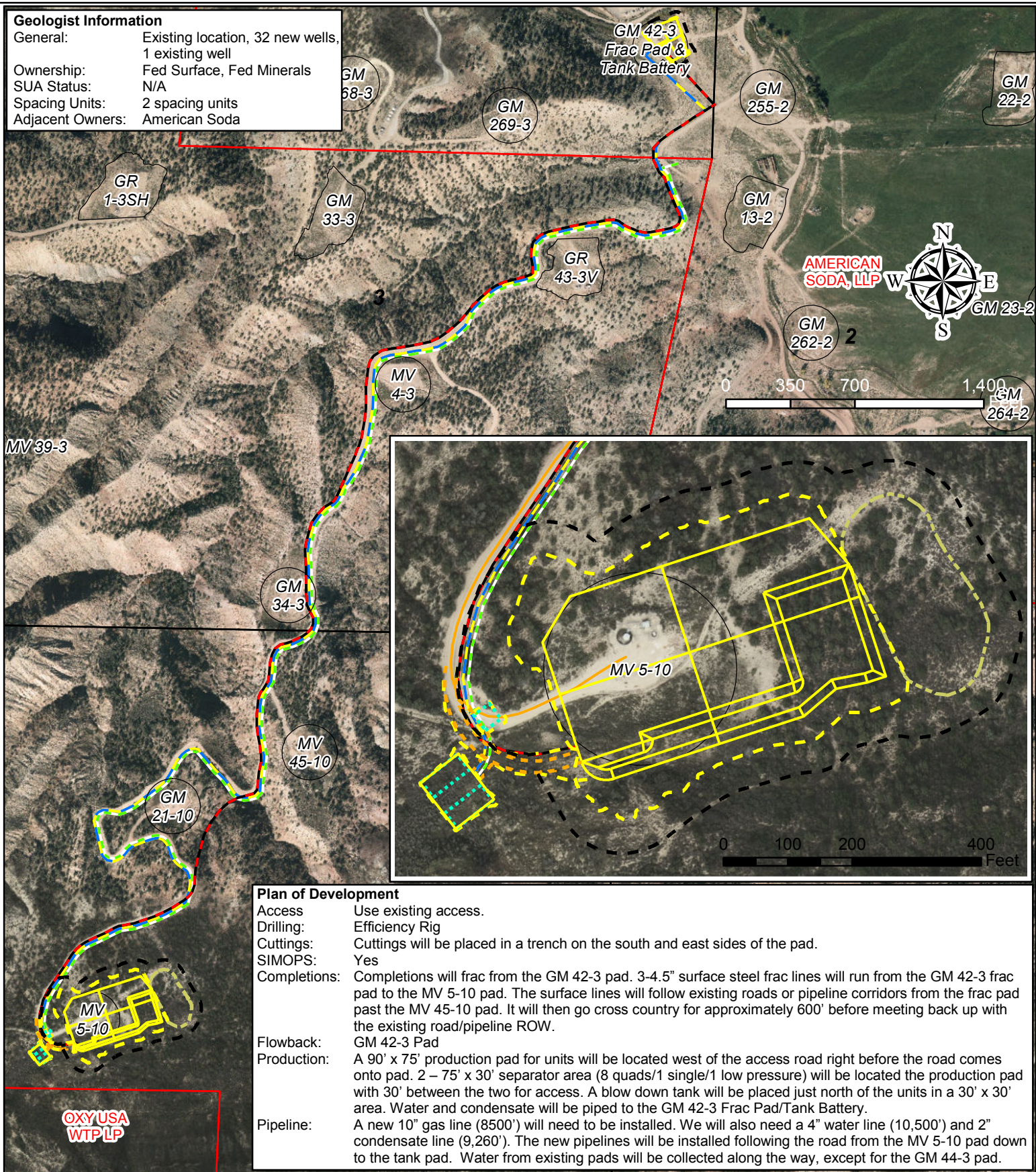


## Geologist Information

General: Existing location, 32 new wells,  
1 existing well  
Ownership: Fed Surface, Fed Minerals  
SUA Status: N/A  
Spacing Units: 2 spacing units  
Adjacent Owners: American Soda



## Plan of Development

Access: Use existing access.  
Drilling: Efficiency Rig  
Cuttings: Cuttings will be placed in a trench on the south and east sides of the pad.  
SIMOPS: Yes  
Completions: Completions will frac from the GM 42-3 pad. 3-4.5" surface steel frac lines will run from the GM 42-3 frac pad to the MV 5-10 pad. The surface lines will follow existing roads or pipeline corridors from the frac pad past the MV 45-10 pad. It will then go cross country for approximately 600' before meeting back up with the existing road/pipeline ROW.  
Flowback: GM 42-3 Pad  
Production: A 90' x 75' production pad for units will be located west of the access road right before the road comes onto pad. 2 - 75' x 30' separator area (8 quads/1 single/1 low pressure) will be located the production pad with 30' between the two for access. A blow down tank will be placed just north of the units in a 30' x 30' area. Water and condensate will be piped to the GM 42-3 Frac Pad/Tank Battery.  
Pipeline: A new 10" gas line (8500') will need to be installed. We will also need a 4" water line (10,500') and 2" condensate line (9,260'). The new pipelines will be installed following the road from the MV 5-10 pad down to the tank pad. Water from existing pads will be collected along the way, except for the GM 44-3 pad.

## Legend

- Proposed Stock Pile
- Proposed Road
- Proposed Production Equipment Area
- Proposed Daylight Line
- Proposed Pad or Pit
- Proposed Limit of Disturbance
- Proposed Surface Frac Lines (3-4.5")
- Proposed Gas Pipeline (10")
- Proposed 4" Water & 2" Oil Lines
- Parcel Ownership (from Garfield County)
- Existing Pad

TEP Rocky Mountain LLC

MV 5-10 Plan of Development  
T7S R96W, Section 10

September 27, 2016

