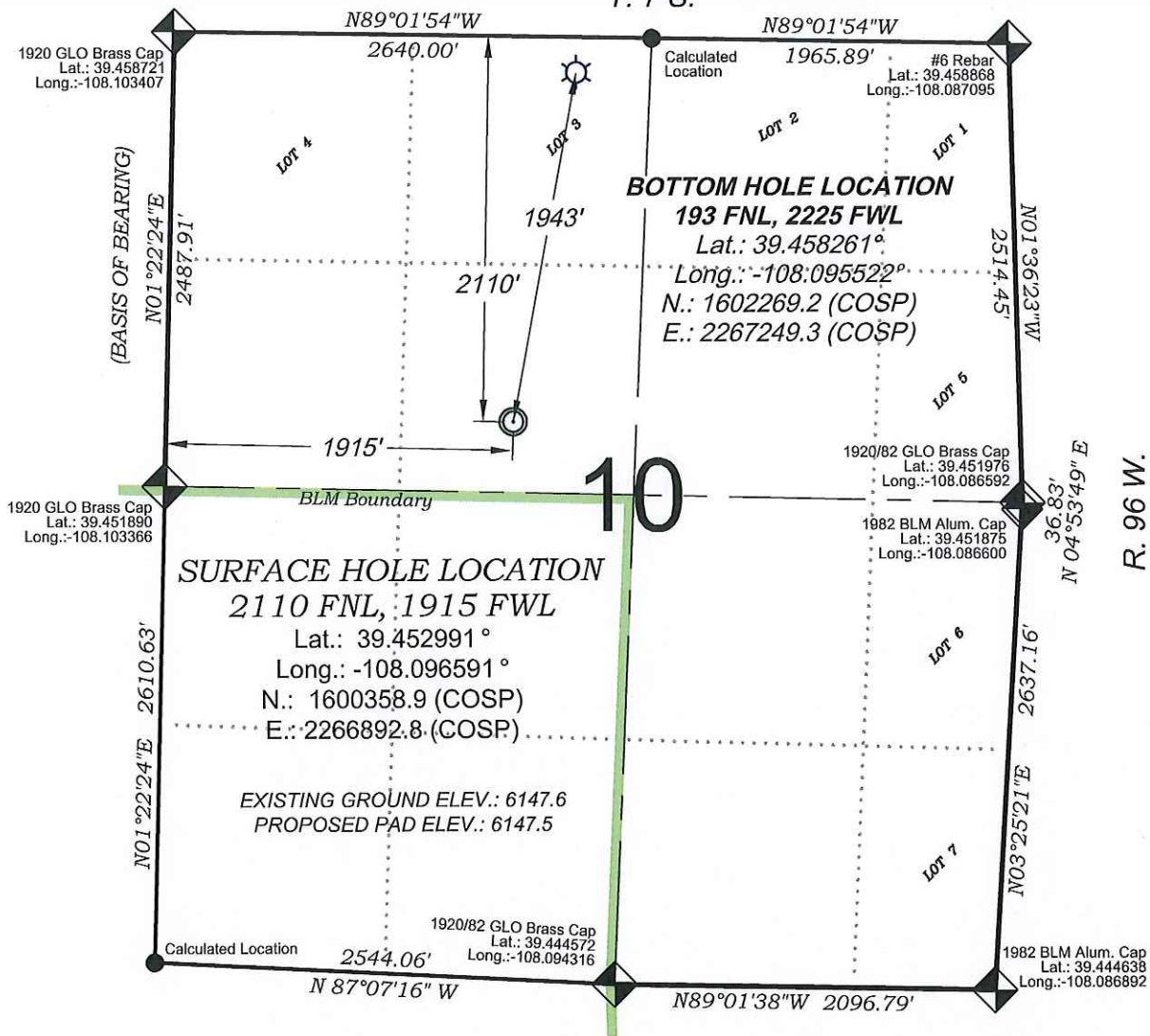
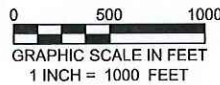


# Federal GM 322-10

T. 7 S.



SEE CONSTRUCTION LAYOUT PLAT  
FOR VISIBLE IMPROVEMENTS  
WITHIN 500' OF THIS LOCATION



## - LEGEND -

- FIELD LOCATED SECTION MONUMENTS AS DESCRIBED
- FIELD SURVEYED WELL LOCATION
- CALCULATED BOTTOM HOLE LOCATION
- CALCULATED SECTION CORNER LOCATION

### SURVEYORS STATEMENT

I, MICHAEL J. LANGHORNE, A REGISTERED LAND SURVEYOR IN THE STATE OF COLORADO DO HEREBY CERTIFY THAT THE SURVEY SHOWN HEREON WAS PREPARED UNDER MY DIRECT SUPERVISION AND HAS BEEN STAKED ON THE GROUND AS SHOWN ON THE PLAT AND CHECKING THAT THIS MAP IS A TRUE REPRESENTATION THEREOF.

*Michael J. Langhorne*

MICHAEL J. LANGHORNE, COLORADO REGISTRATION NO. 36572  
FOR AND ON BEHALF OF  
BOOKCLIFF SURVEY SERVICES, INC.

### REFERENCES

- 1) Dependent Resurvey and Extension Survey T. 7 S., R. 95 W., 6th P.M (GLO PLAT)
- 2) U.S.G.S. QUAD: Parachute, CO

REVISED: 8/31/16

136 East Third Street  
Rifle, Colorado  
81650 Ph. (970)  
625-2720 Fax (970)  
625-2773



SURVEY DATE: 7/29/14  
MAP DATE: 9/23/14  
SCALE: 1" = 1000'  
PLAT: 1 of 1  
PROJECT: TEP Valley

### NOTES

- 1) ELEVATIONS BASED ON N.A.V.D. 1988 PUBLISHED COORDINATES.
- 2) LATITUDES AND LONGITUDES ARE BASE ON NAD 83, PUBLISHED COORDINATES
- 3) STATE PLANE COORDINATES ARE BASED ON COLORADO CENTRAL ZONE, U.S. SURVEY FEET.
- 4) ELEVATION MASK SET TO 15°
- 5) GPS OPERATOR J. KIRKPATRICK, OBSERVED A PDOP OF 2.2 ON SURVEY POINT NUMBER 435.
- 6) SURFACE AND BOTTOM HOLE LOCATIONS ARE MEASURED 90° FROM SECTION LINES.

### WELL LOCATION PLAT Prepared for:



TEP Rocky Mountain LLC

SE 1/4 NW 1/4, SECTION 10  
T. 7 S., R. 96 W. of the 6th. P.M.  
GARFIELD COUNTY, COLORADO