



**GAMMA RAY
CEMENT BOND LOG**

Doc # 2618607

Company EOG RESOURCES , INC

Well JUDY 1-30
Field NORTH PARK
County JACKSON

State COLORADO

Company **EOG RESOURCES , INC**
Well **JUDY 1-30**
Field **NORTH PARK**
County **JACKSON** State **COLORADO**

Location: API # :

Other Services

SEC 30 TWP 7N RGE 80W

Permanent Datum G.L.
Log Measured From K.B. Elevation 8138'
Drilling Measured From K.B. 21; D.F. 8158'
G.L. 8138'

JULY, 07, 2008

ONE

8000'

8106'

8106'

6500'

8.75"

WATER

FULL

N/A

185 DEGREES O.H.

0 PSI

7-1/16 5 K

SEE LOG

P-70

7/32"

ROCKSPRINGS

J. NESLONEY

MR. HANSELMAN

Size

Wt/Ft

Top

Bottom

9.625"

36 #

SURFACE

802'

7"

N/A

SURFACE

PBTD

Liner Record

<<< Fold Here >>>

All interpretations are opinions based on inferences from electrical or other measurements and Perf-O-Log cannot and does not guarantee the accuracy or correctness of any interpretation, and Perf-O-Log will not, except in the case of gross or willful negligence on our part, be liable or responsible for any loss, costs, damages, or expenses incurred or sustained by anyone resulting from any interpretation made by any of our officers, agents or employees. These interpretations are also subject to Perf-O-Log's general terms and conditions set out in our current Price Schedule.

Comments

**CORRELATED TO WEATHERFORDS COMPENSATED
PHOTO DENSITY COMPENSATED DUAL NEUTRON LOG
DATED : 28-JUN-2008**

THANK YOU FOR USING PERF-O-LOG

Your Perf-O-Log Crew

Engineer: J. NESLONEY
Operator: A. HARTLE
Operator: J. HUNTER
Operator: B. TEFFT

Tool Data - Services

POL CCL 207
POL CBL 29
POL GR 136

Serial Number

Operator	Offset (ft)	Depth (ft)	Description	Log (ft)	CD (in)	Wt (lb)
----------	-------------	------------	-------------	----------	---------	---------

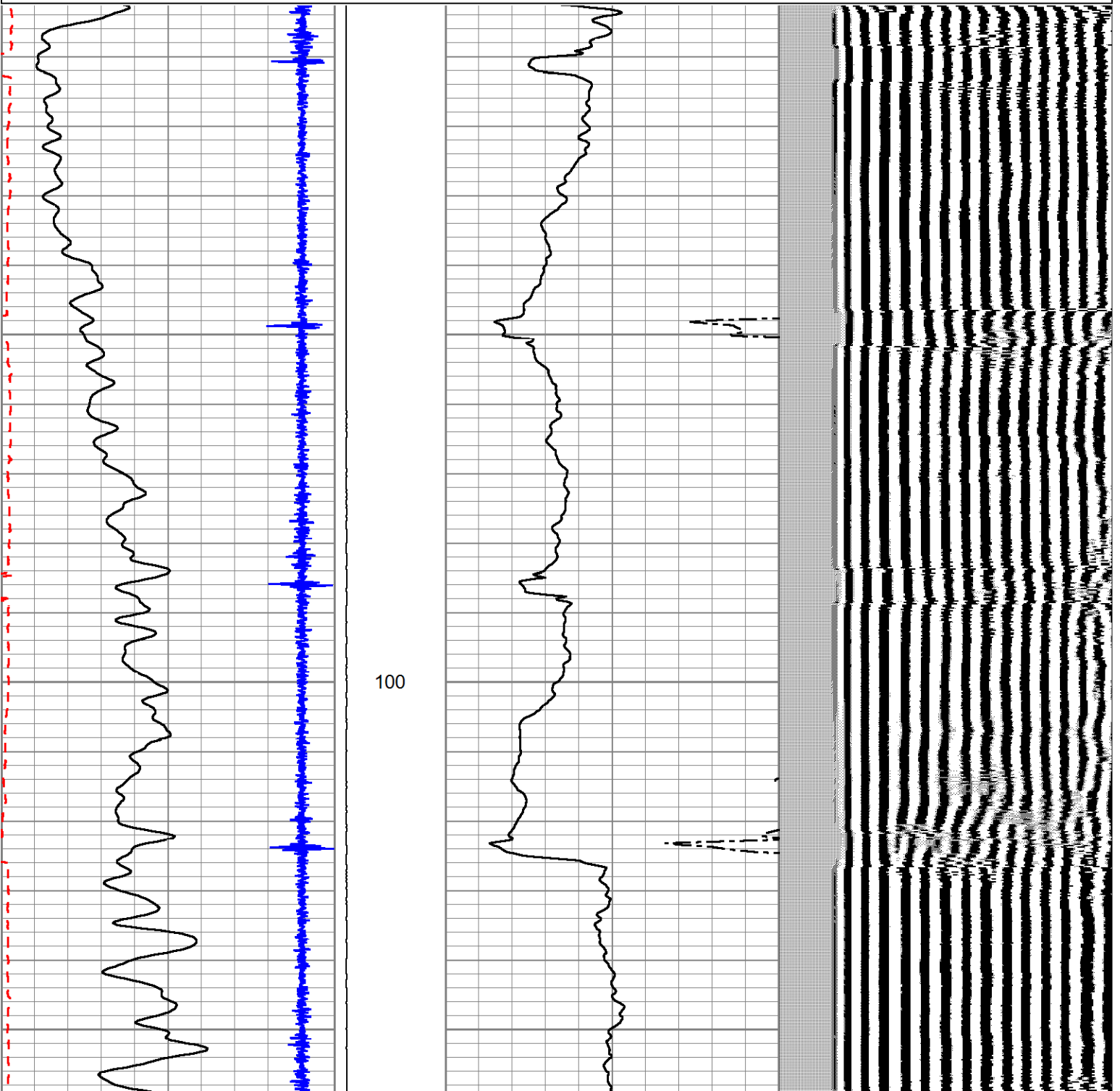


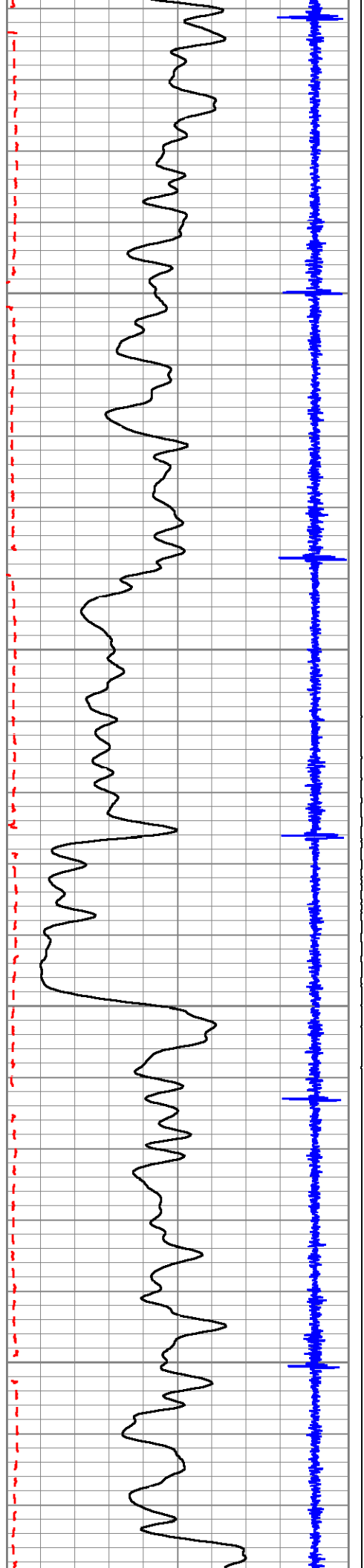
MAIN PASS

O PSI

Database File: 73947cbleog.db
Dataset Pathname: npark/judy1-30/run1/pass13.1
Presentation Format: cbl02
Dataset Creation: Mon Jul 07 12:34:40 2008 by Calc Std Casedhole 07120
Charted by: Depth in Feet scaled 1:240

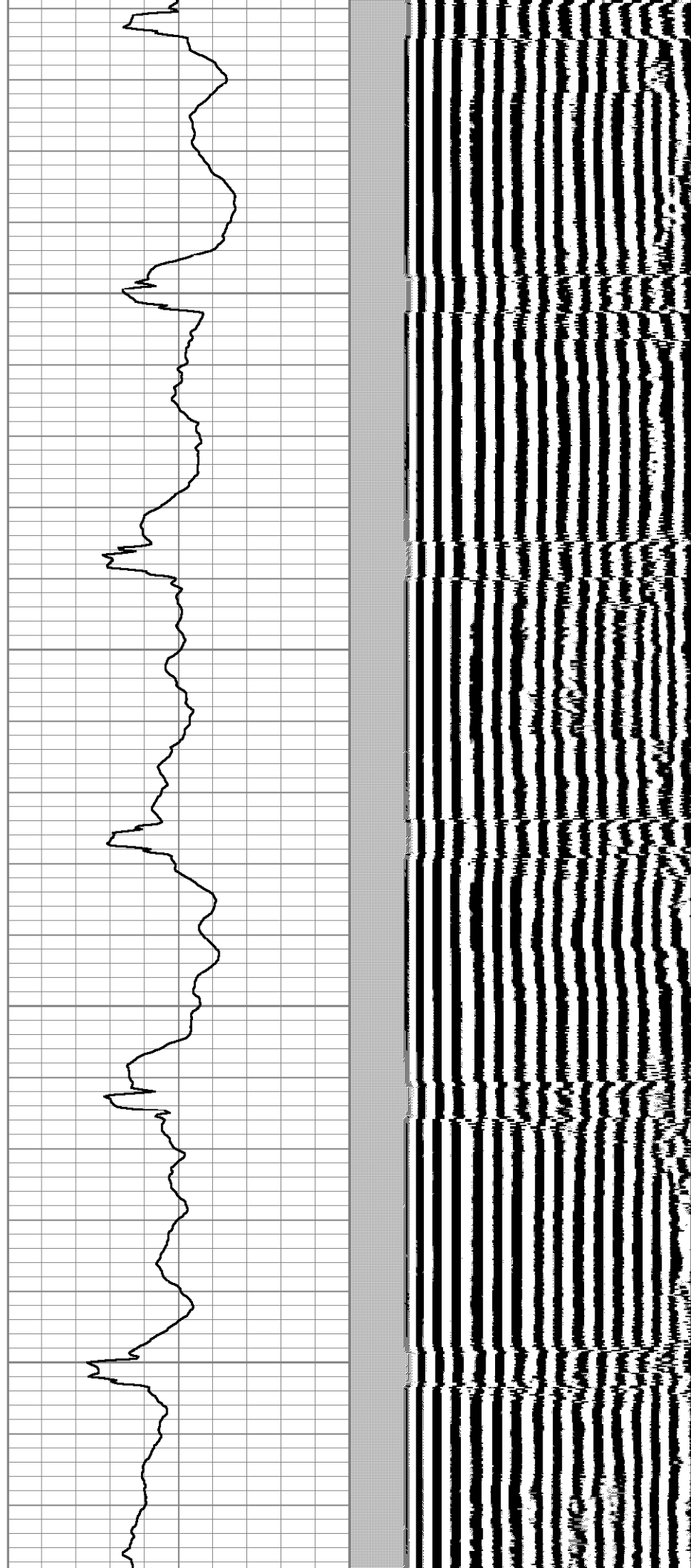
286	Travel Time (usec)	186	LTEN	0	Amplified Amplitude (mV)	20	200	Variable Density	1200
-18	Collar Locator	2	0	(lb/3000)	0	Amplitude (mV)	100		
0	Gamma Ray (cps)	150							

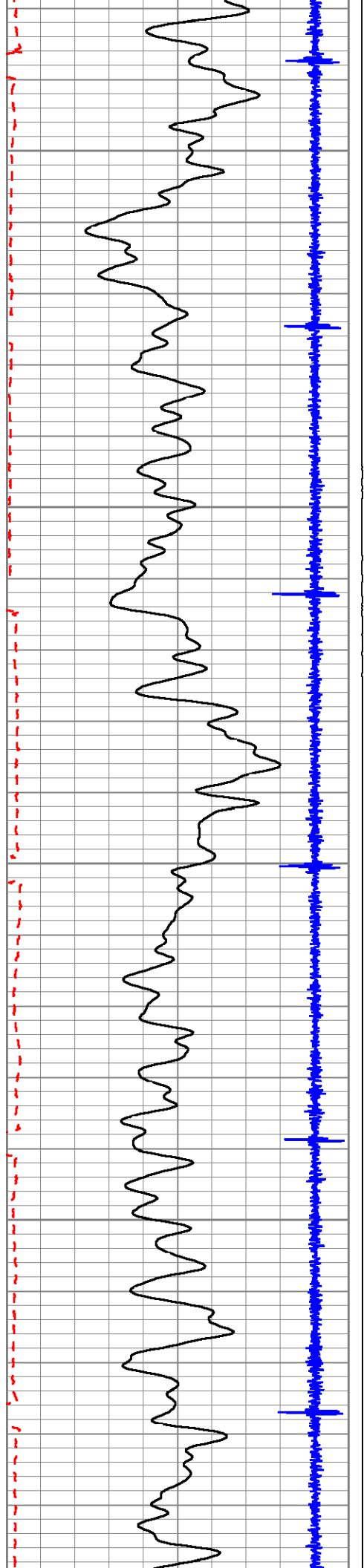




200

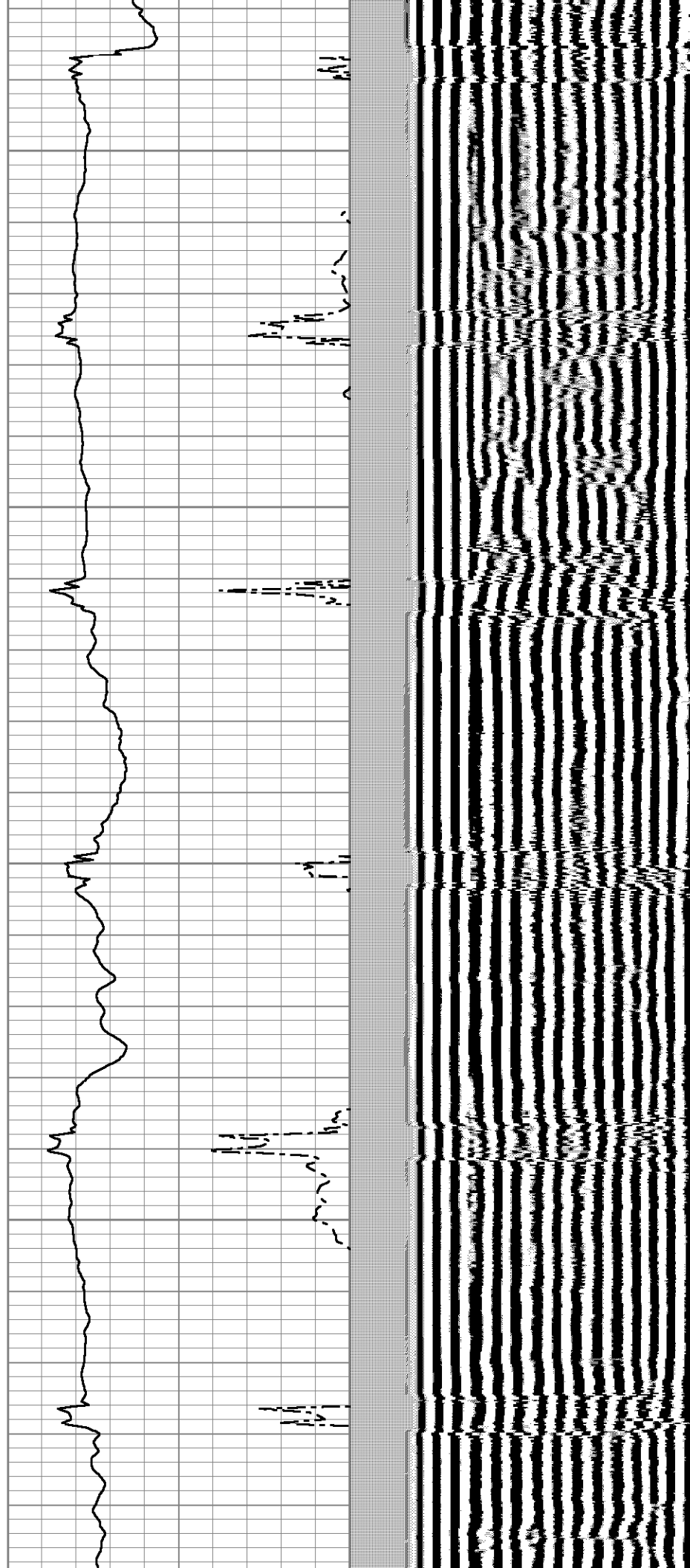
300

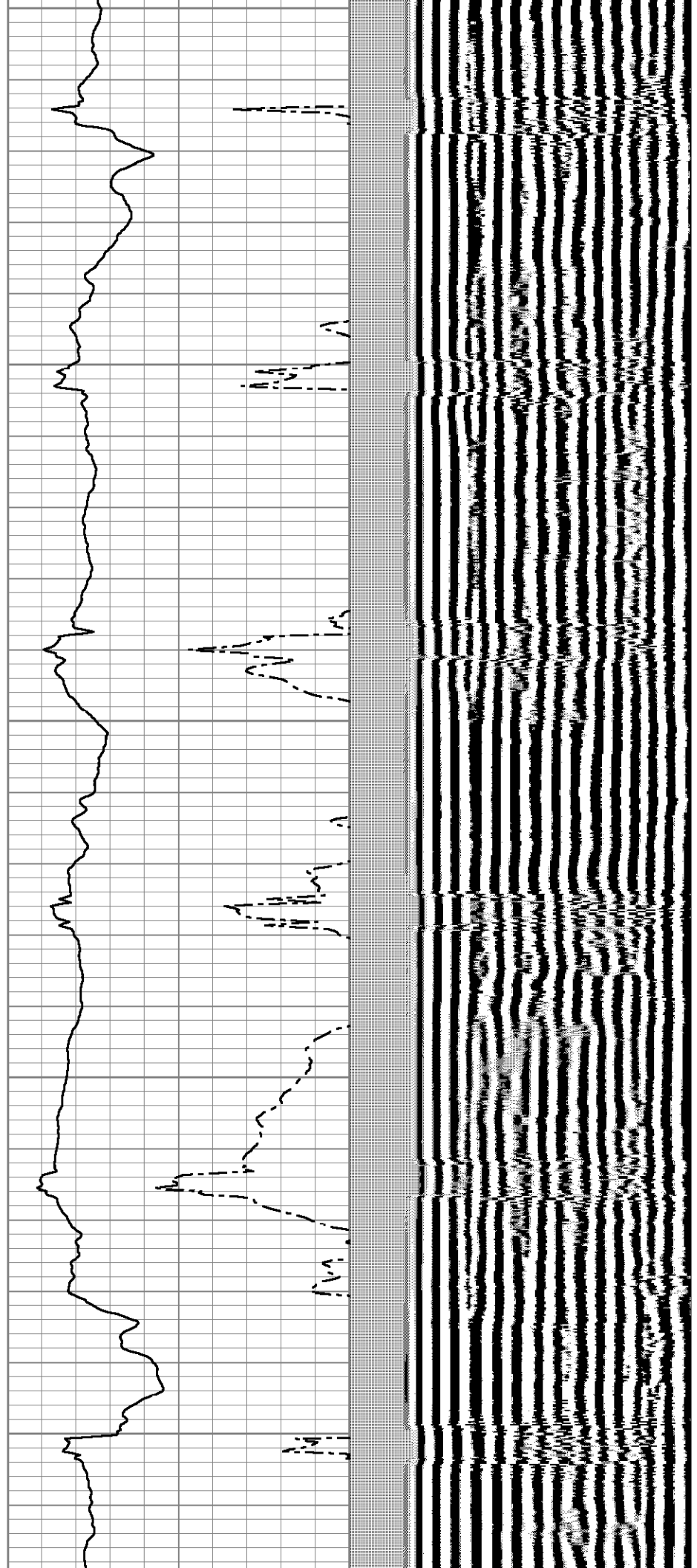
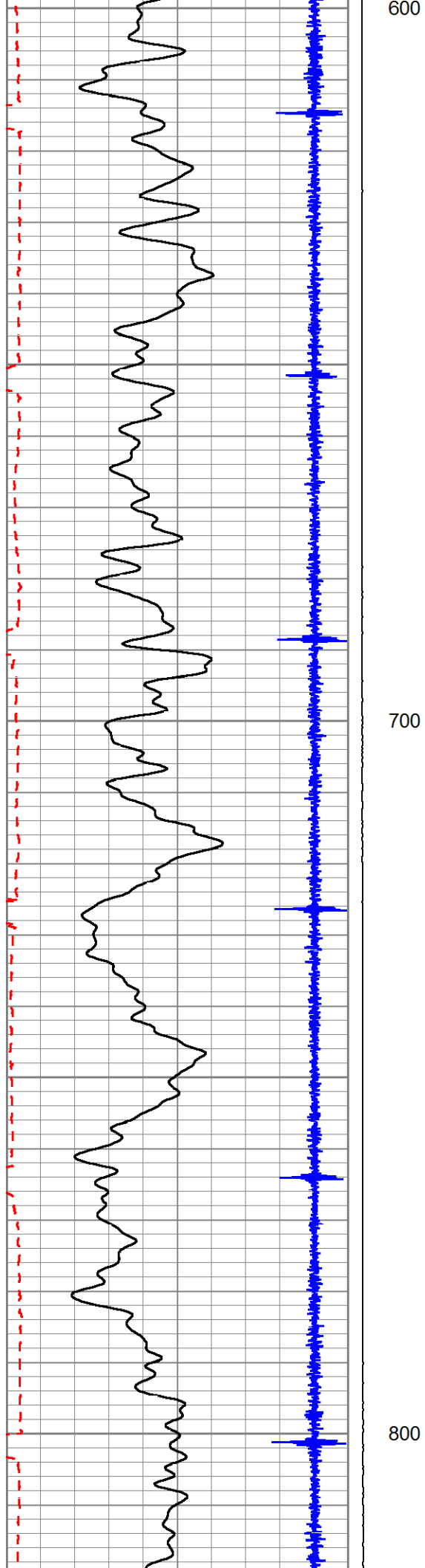


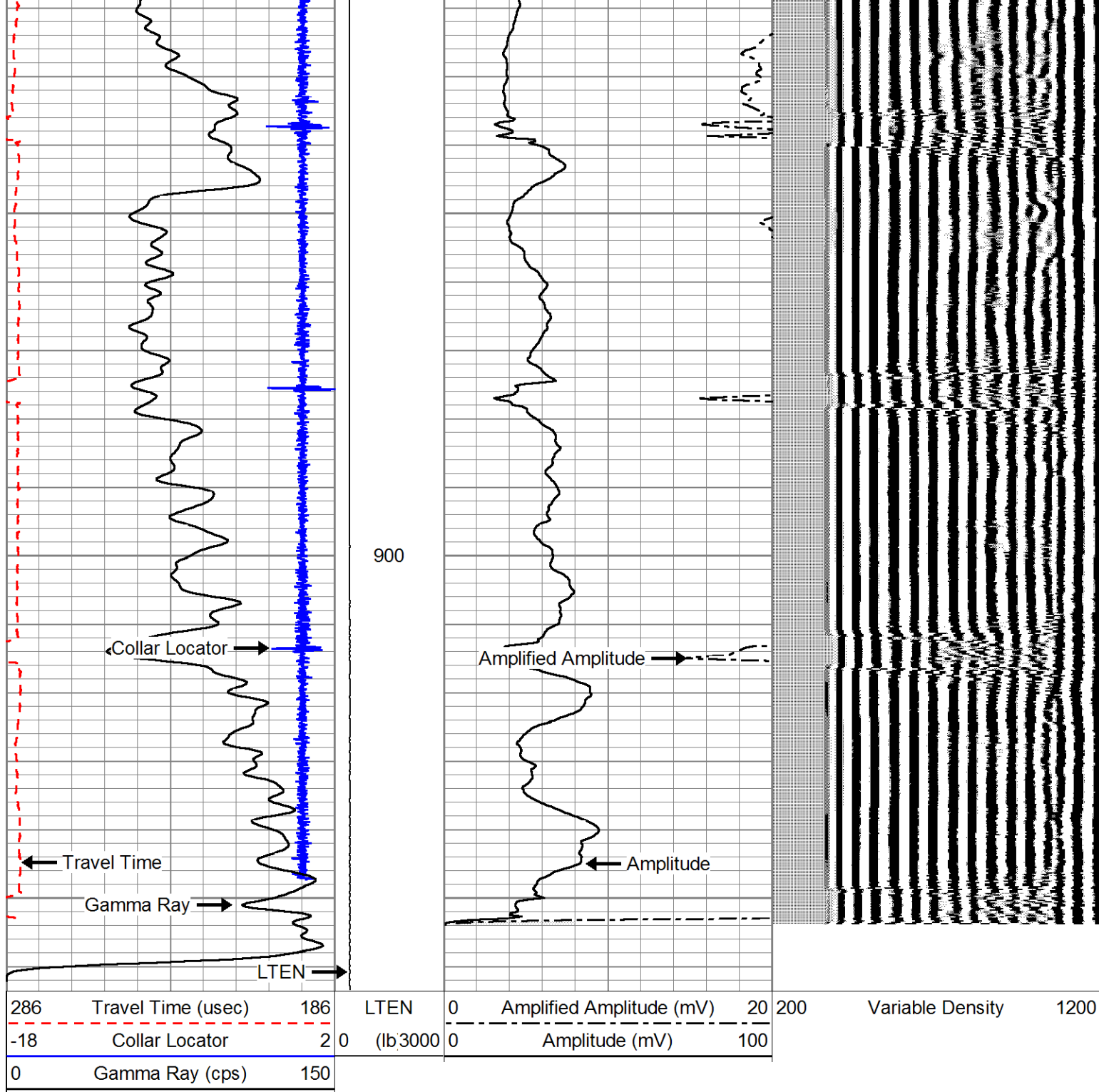


400

500







MAIN PASS

0 PSI

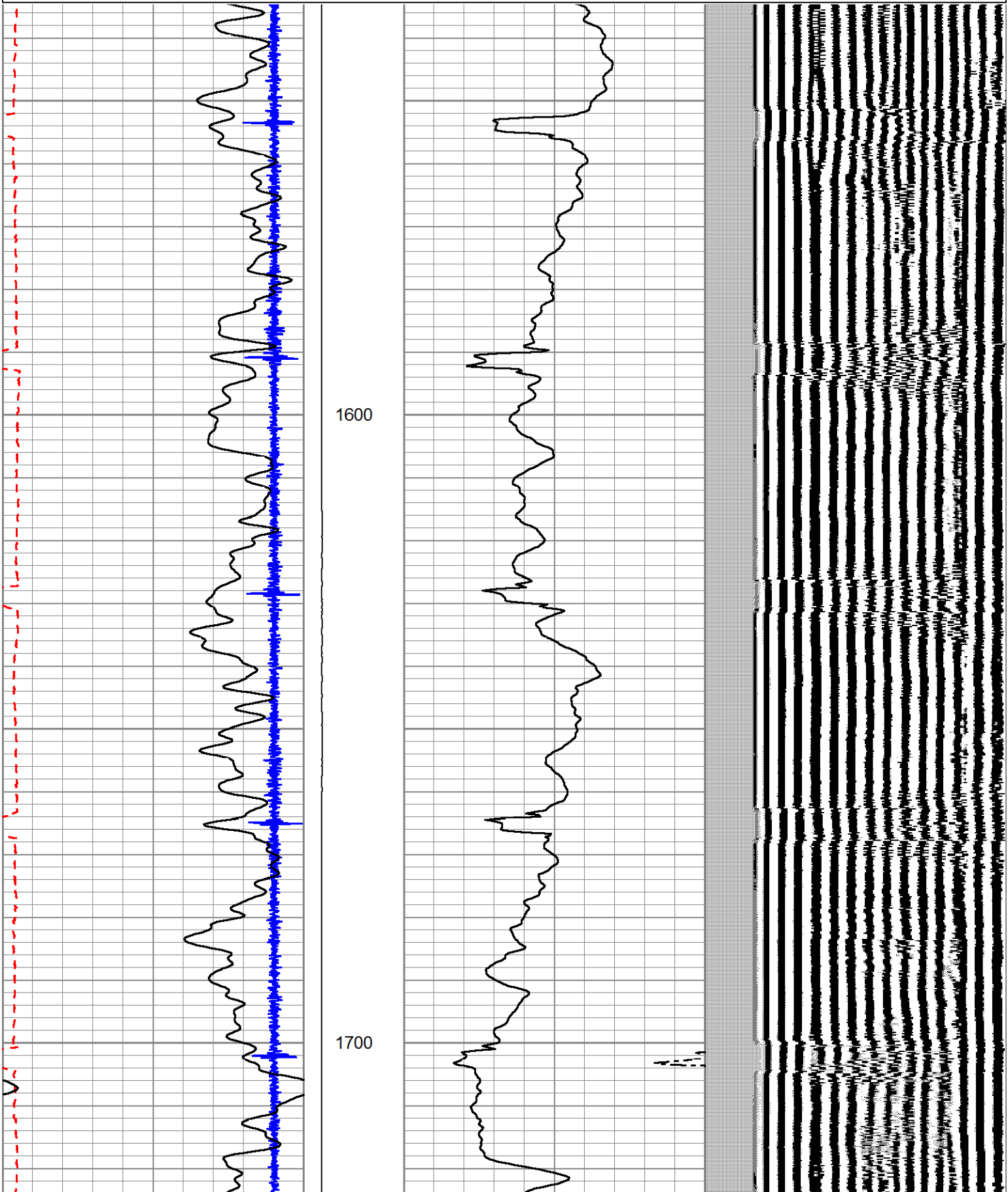


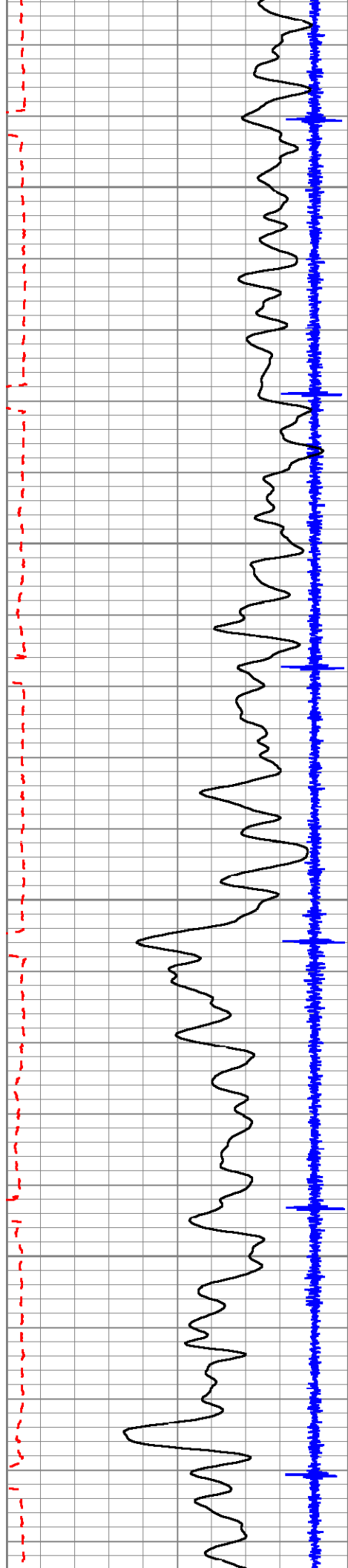
MAIN PASS

0 PSI TOP OF LIGHT
WEIGHT CEMENT

Database File: 73947cbleog.db
 Dataset Pathname: npark/judy1-30/run1/pass12
 Presentation Format: chl02

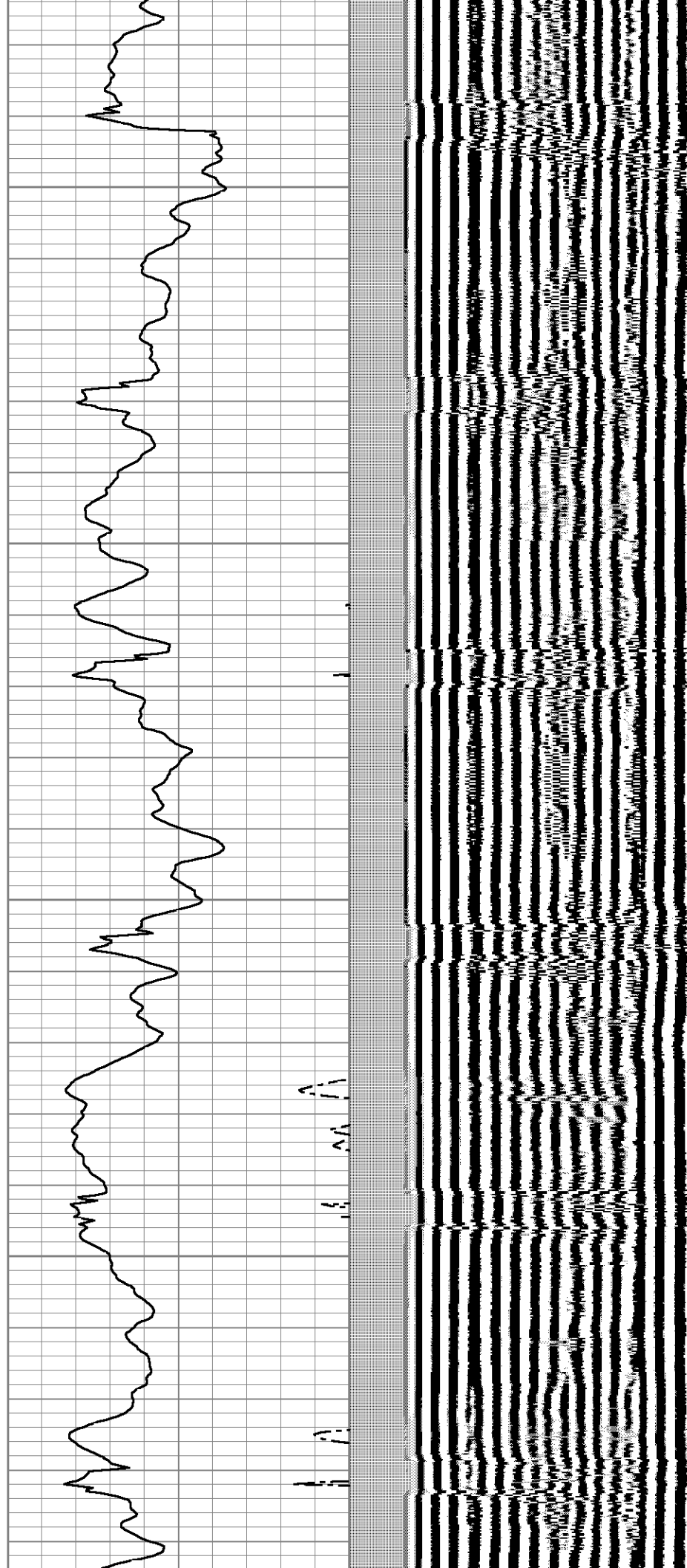
Presentation Format: cbl02		Dataset Creation: Mon Jul 07 12:03:29 2008 by Log Std Casedhole 07120		Charted by:		Depth in Feet scaled 1:240			
286	Travel Time (usec)	186	LTEN	0	Amplified Amplitude (mV)	20	200	Variable Density	1200
-18	Collar Locator	2	0	(lb 3000	0	Amplitude (mV)	100		
0	Gamma Ray (cps)	150							

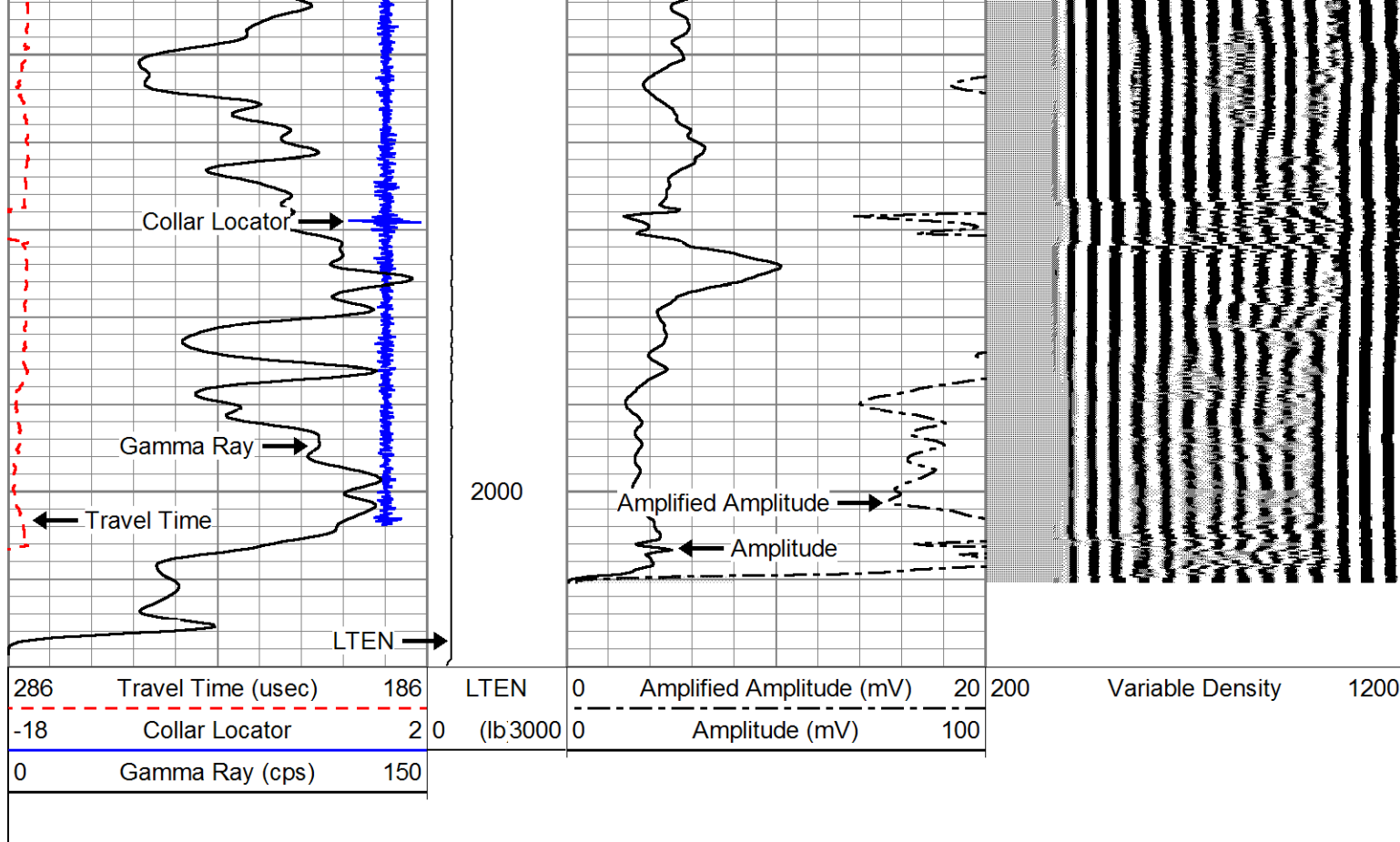




1800

1900



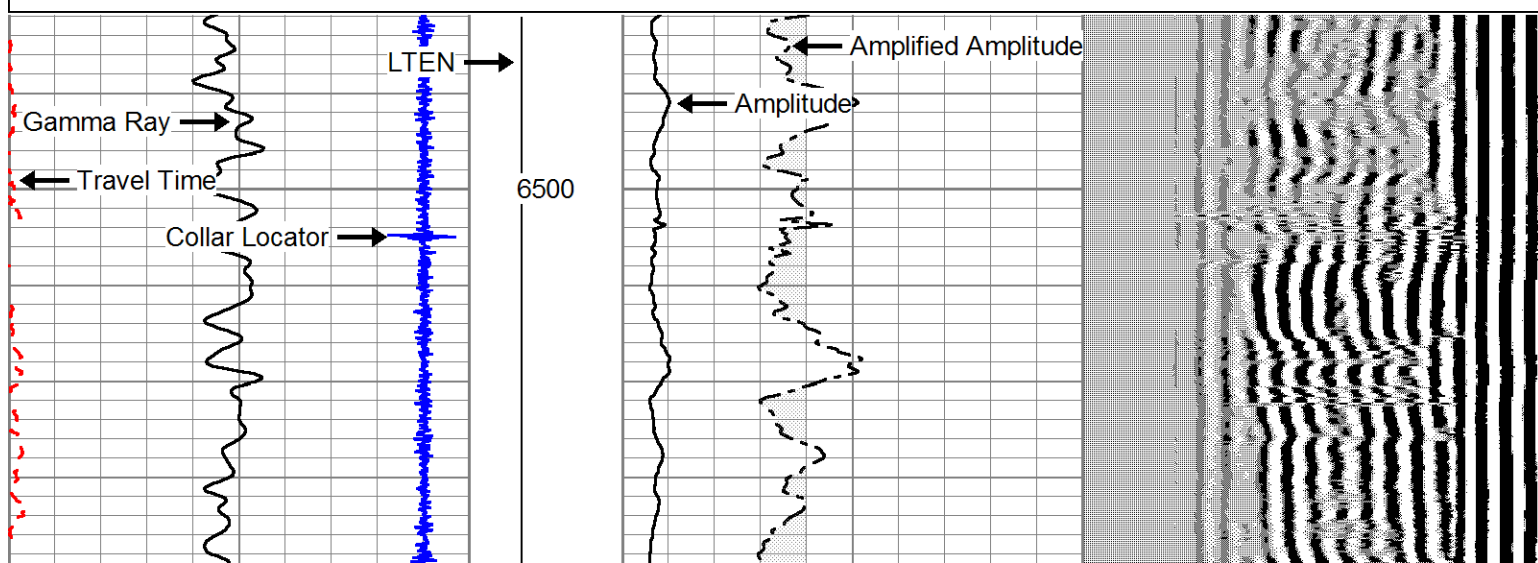


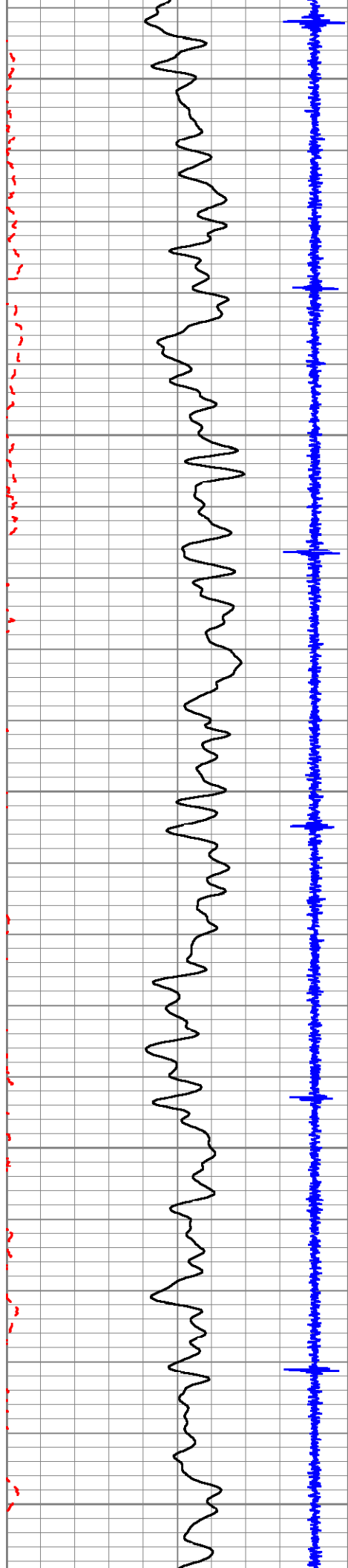
MAIN PASS

O PSI

Database File: 73947cbleog.db
 Dataset Pathname: npark/judy1-30/run1/pass8
 Presentation Format: cbl02
 Dataset Creation: Mon Jul 07 10:57:40 2008 by Log Std Casedhole 07120
 Charted by: Depth in Feet scaled 1:240

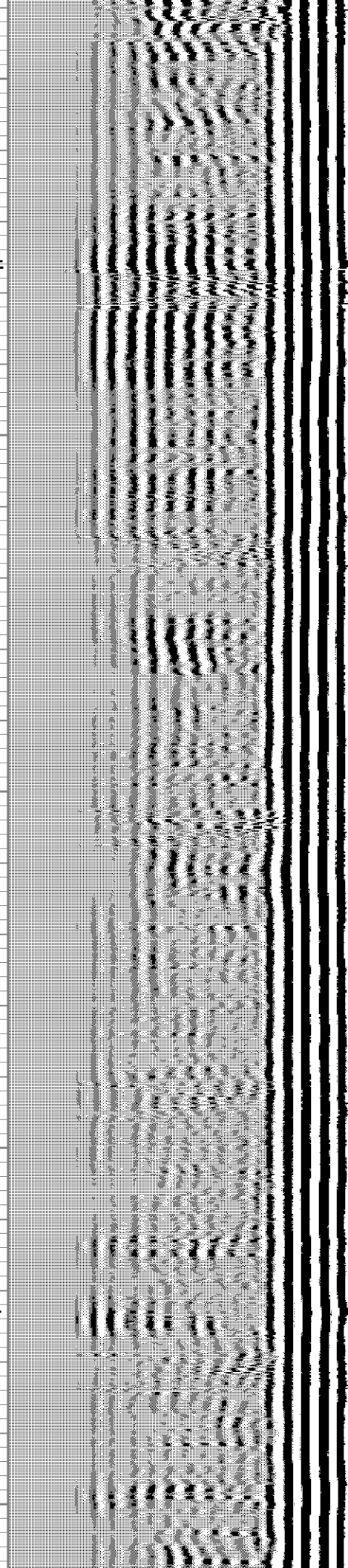
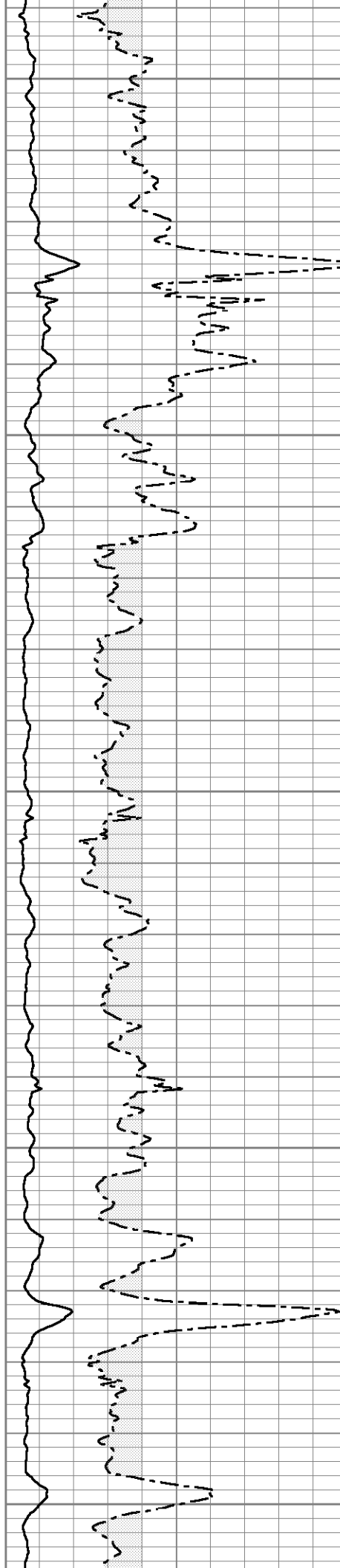
286	Travel Time (usec)	186	LTEN	0	Amplified Amplitude (mV)	20	200	Variable Density	1200
-18	Collar Locator	2	0	(lb 3000)	0	Amplitude (mV)	100		
0	Gamma Ray (cps)	150							

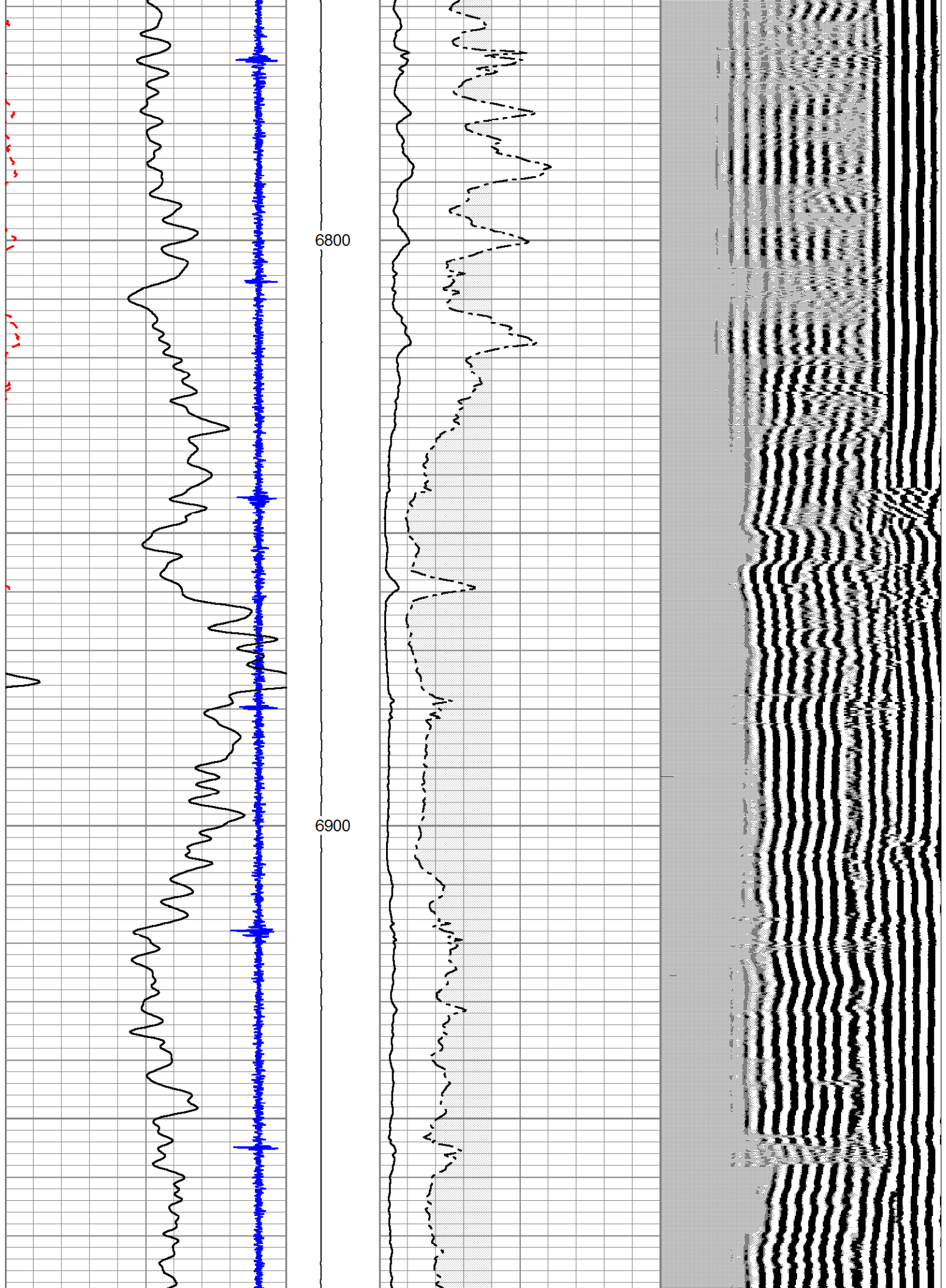


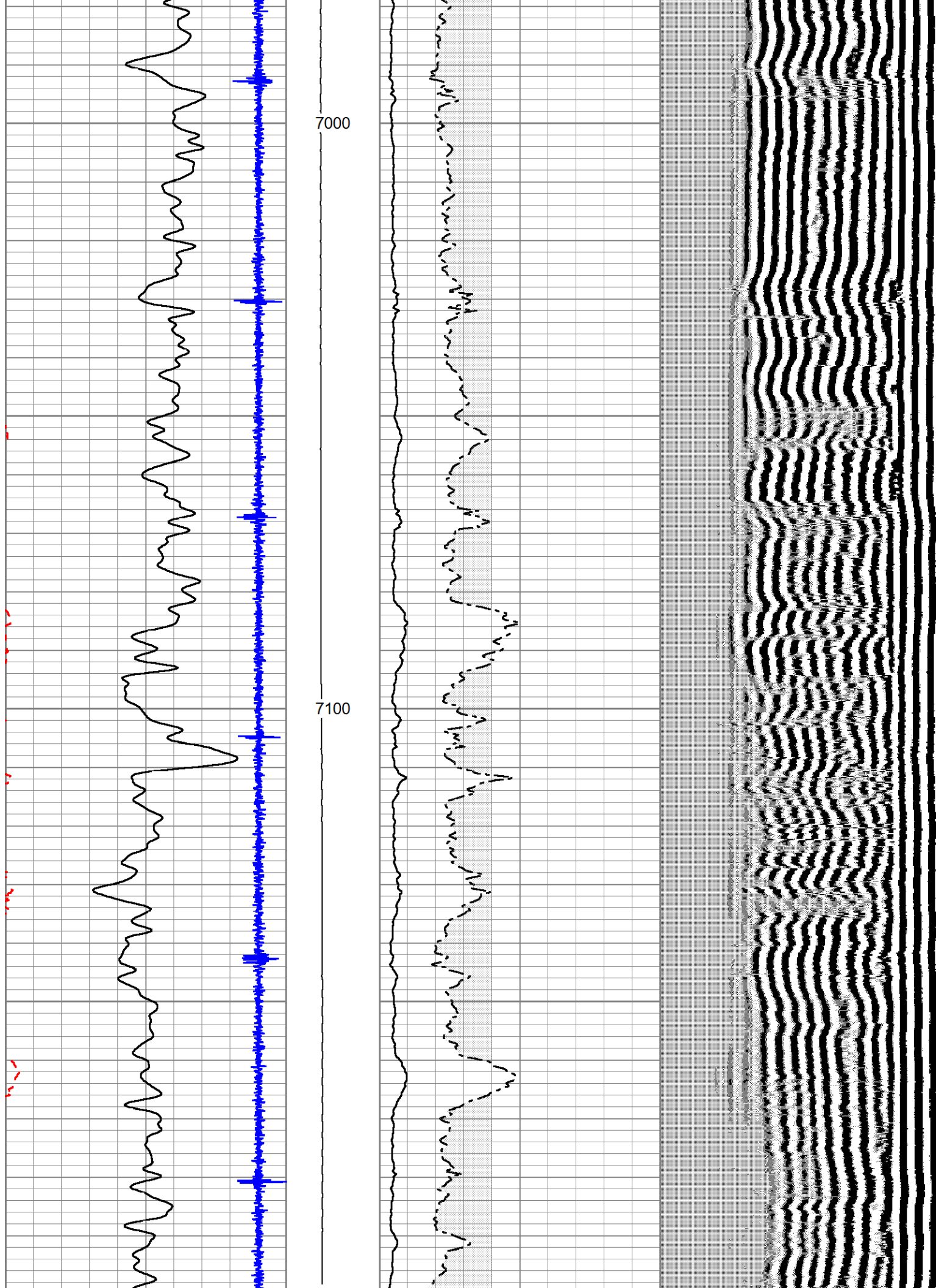


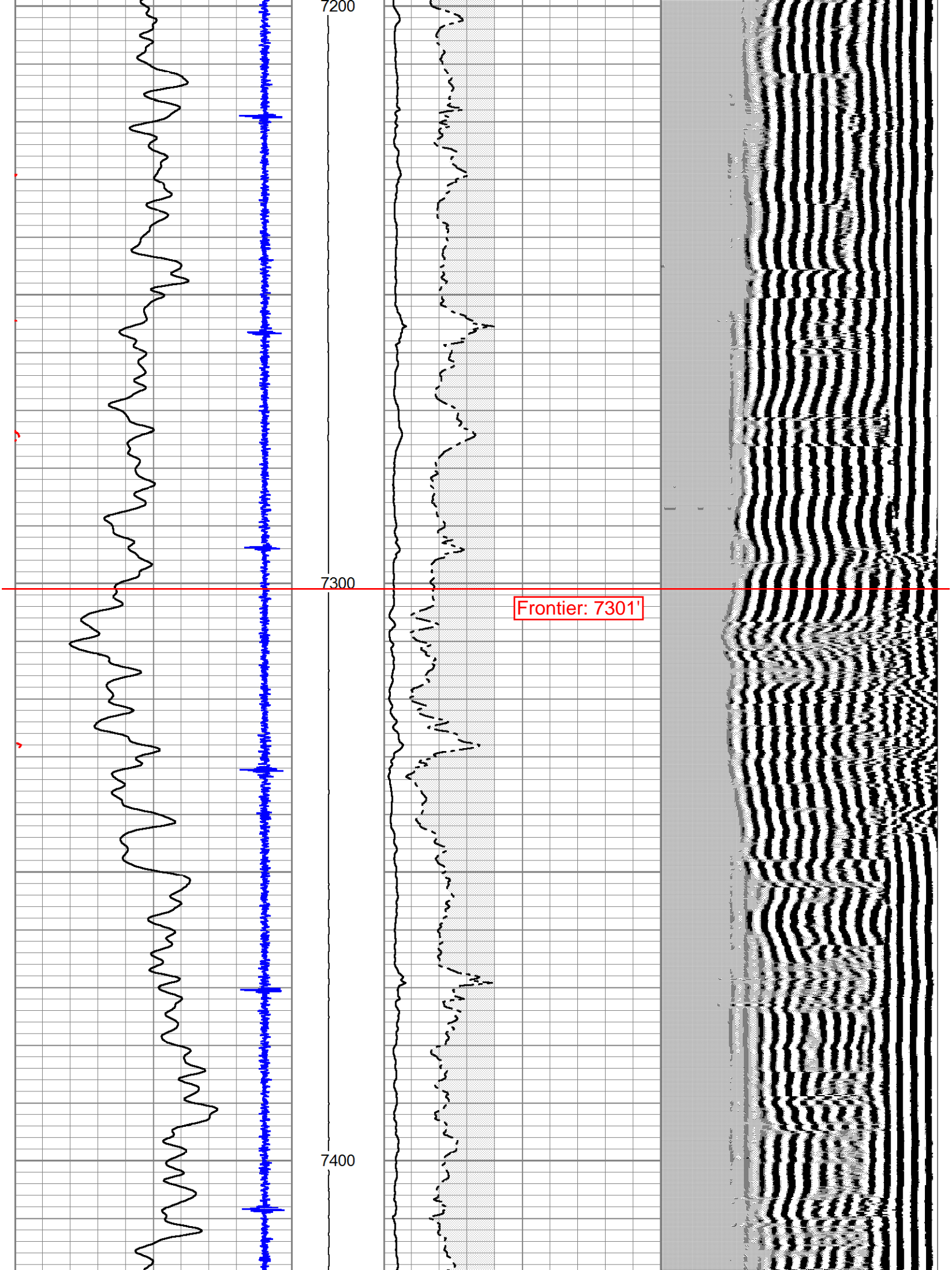
6600

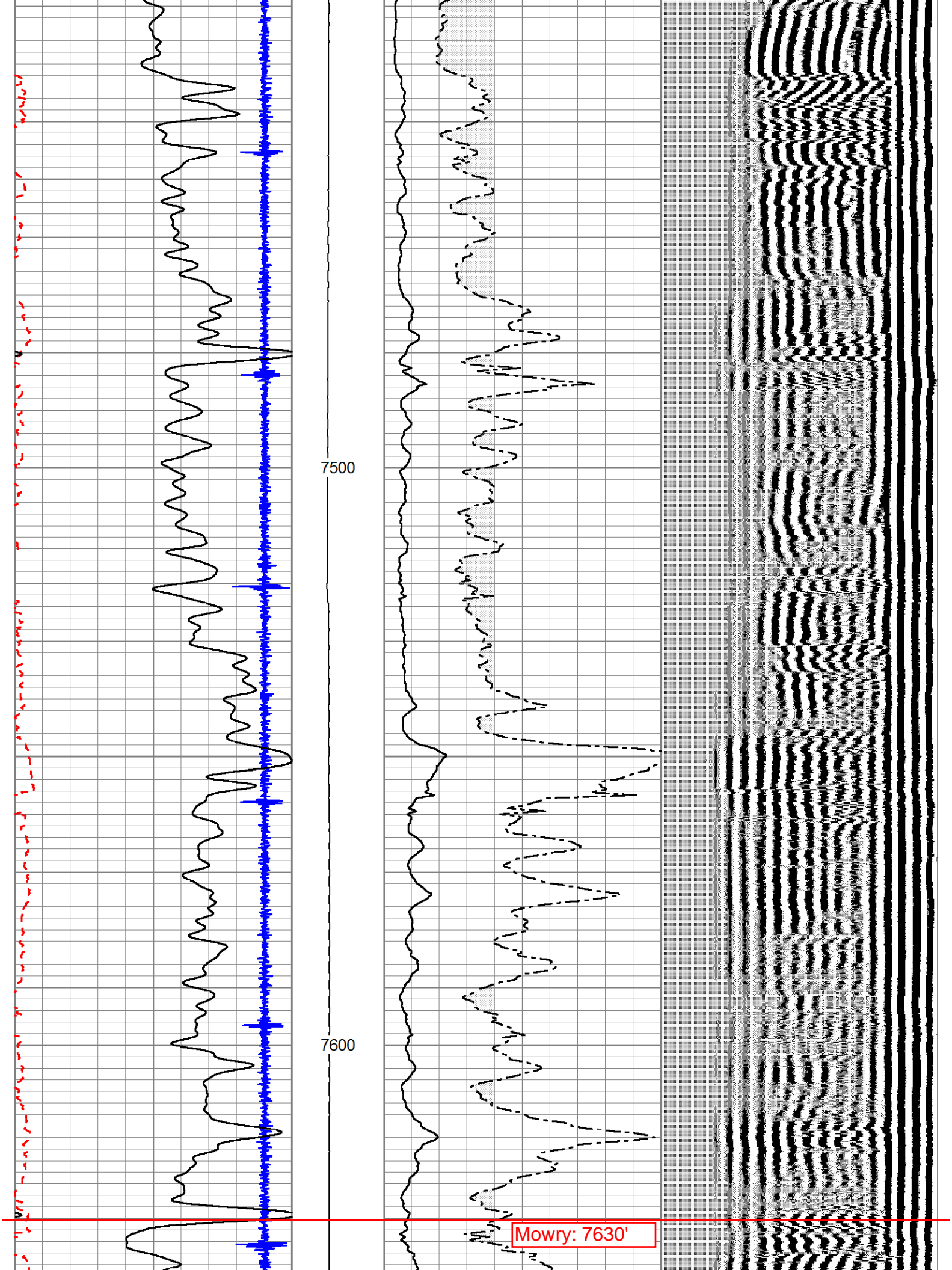
6700







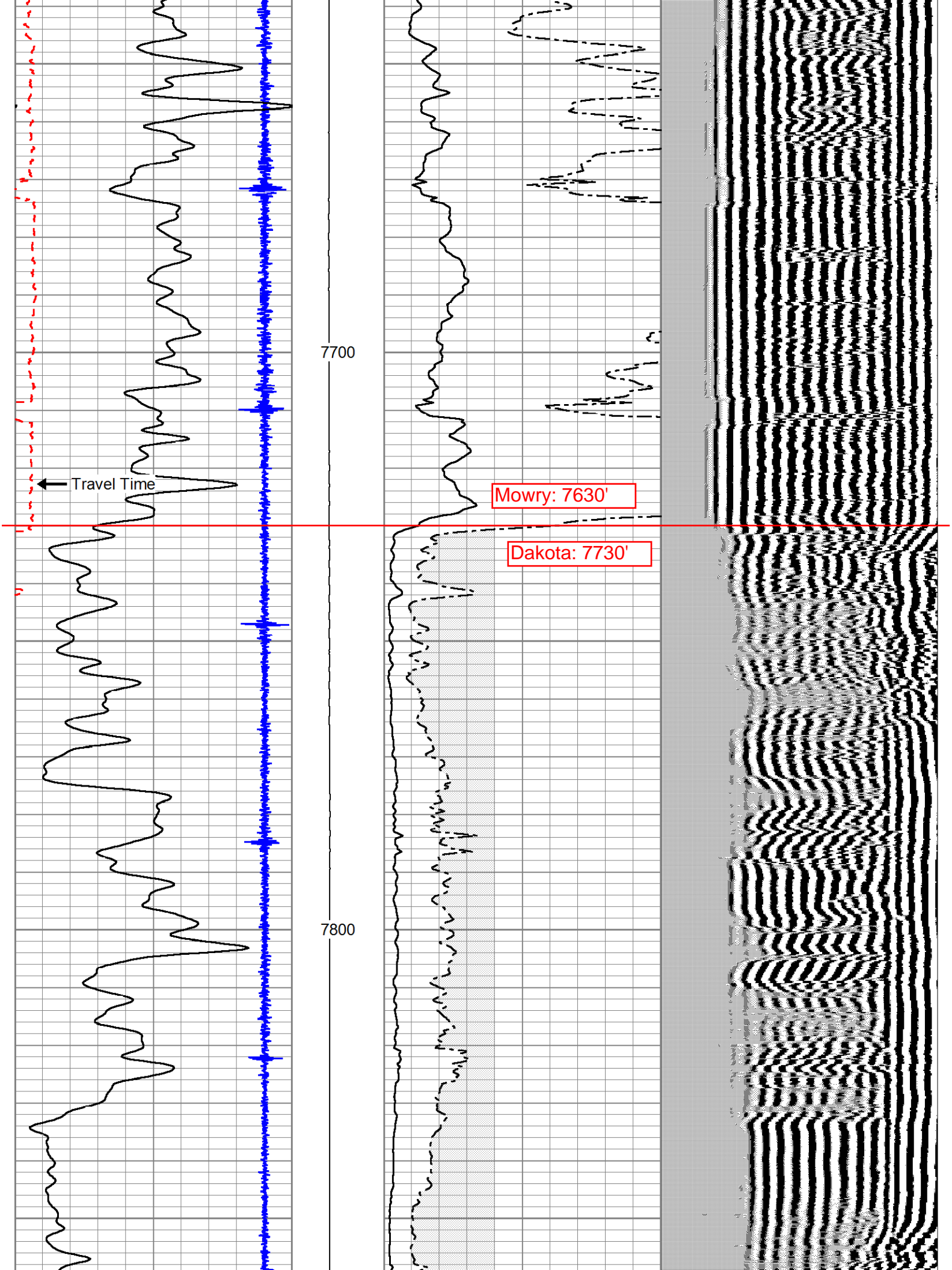


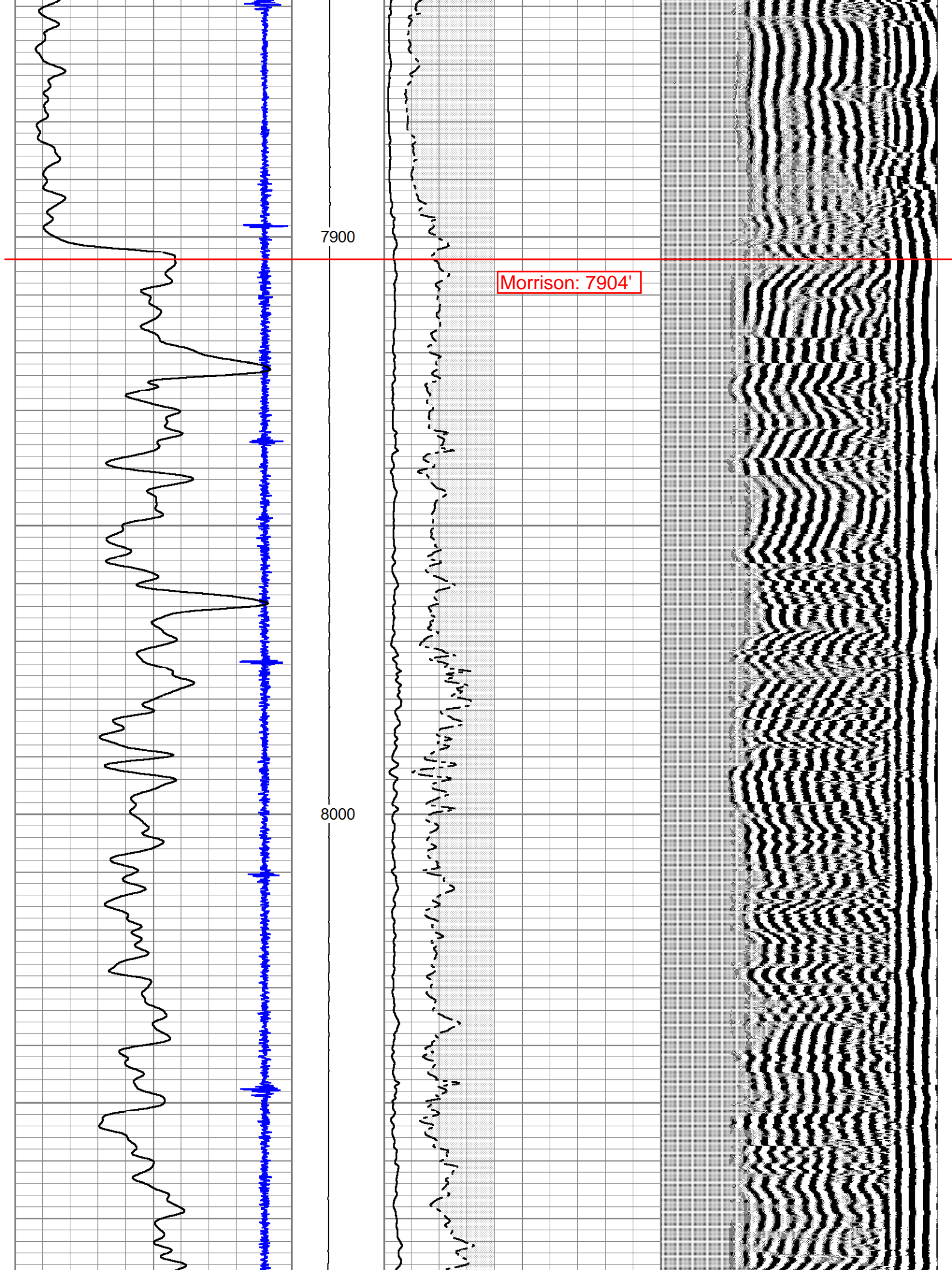


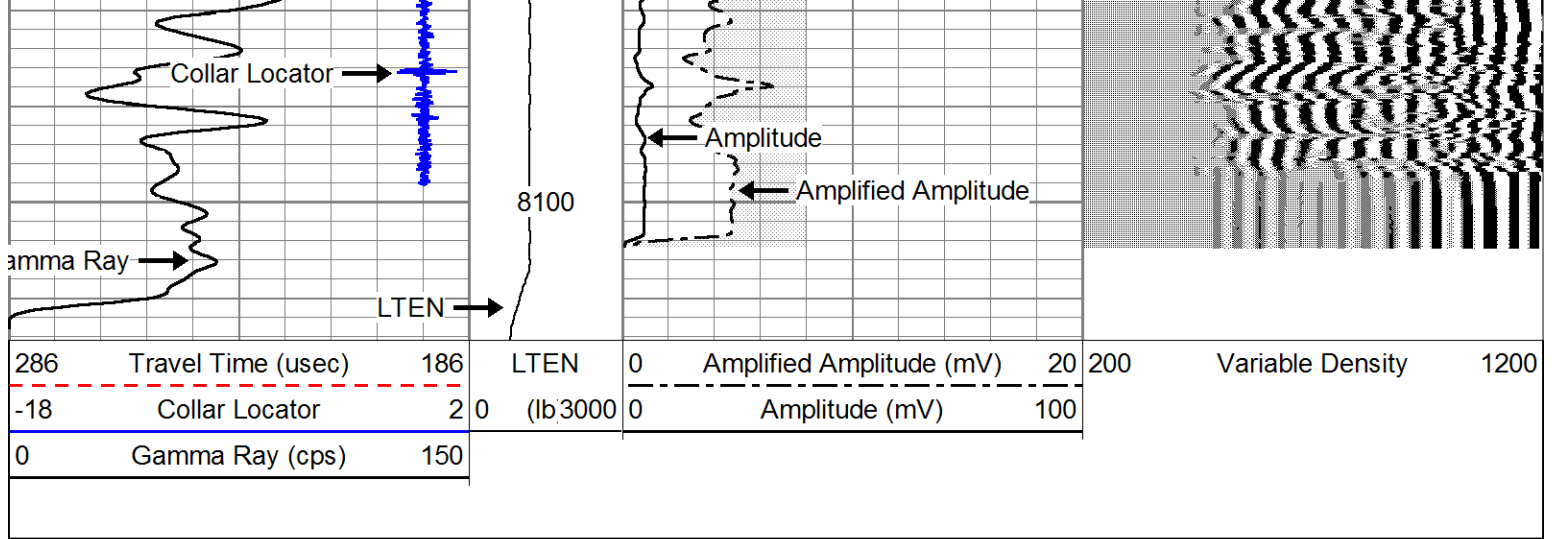
7500

7600

Mowry: 7630'







MAIN PASS

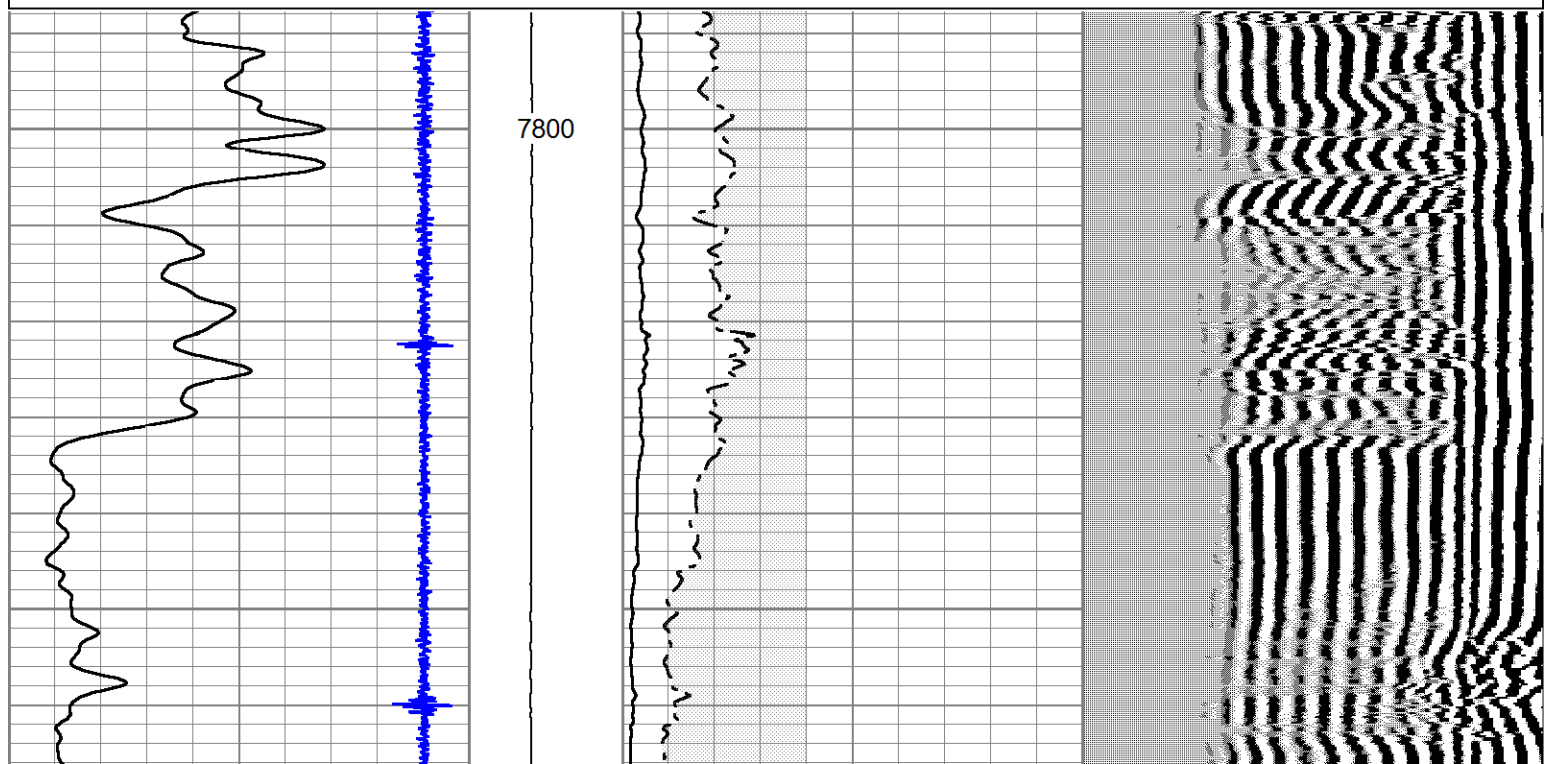
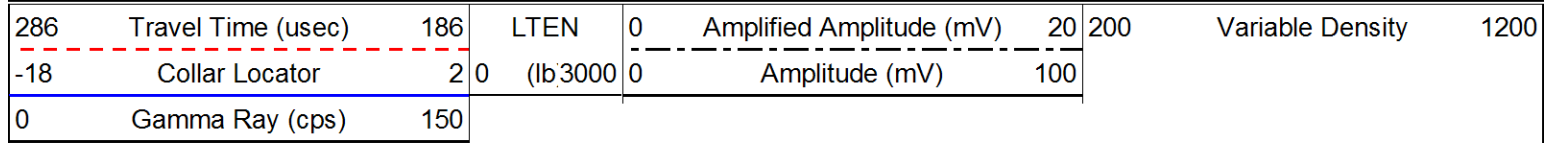
O PSI

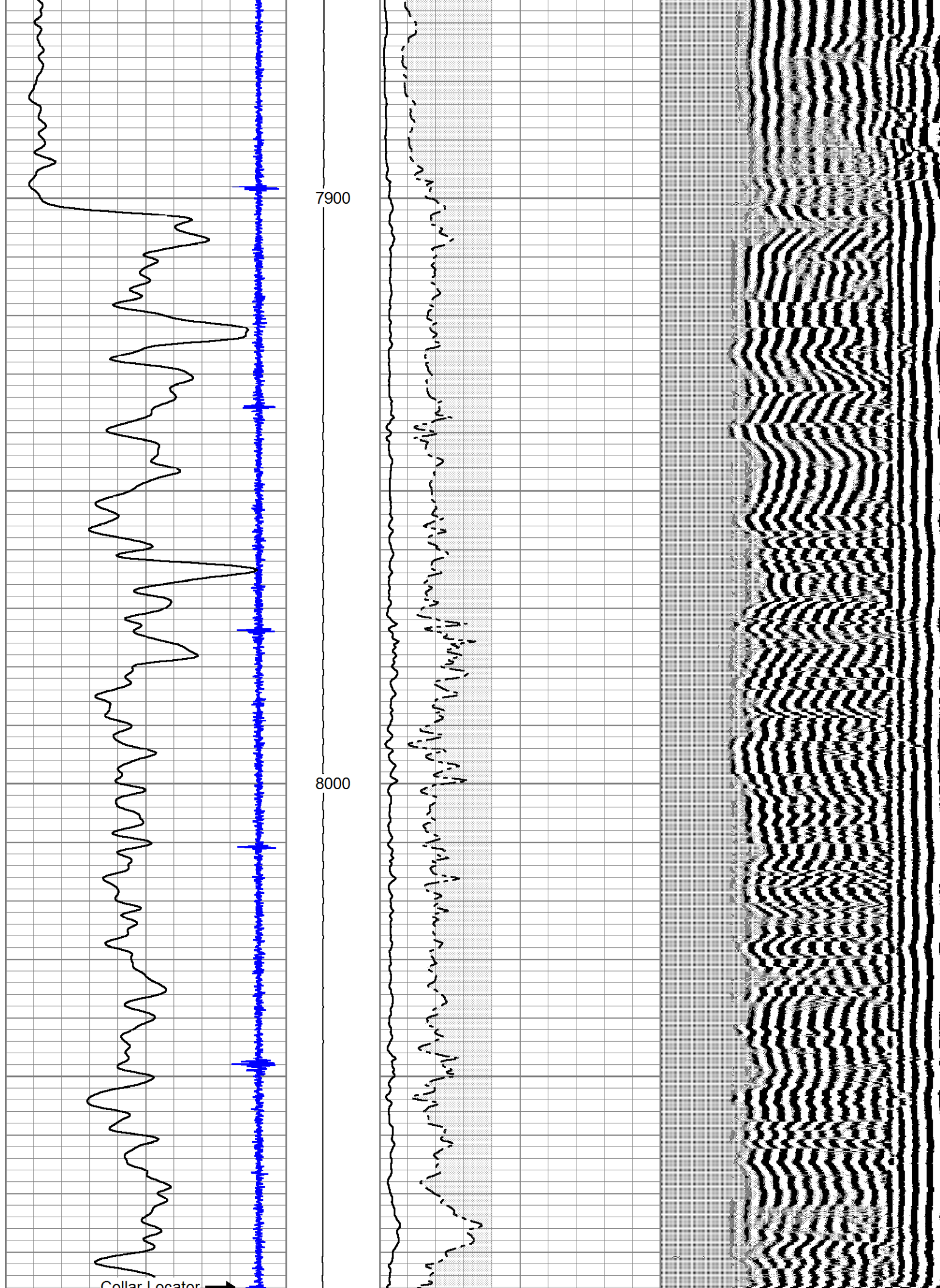


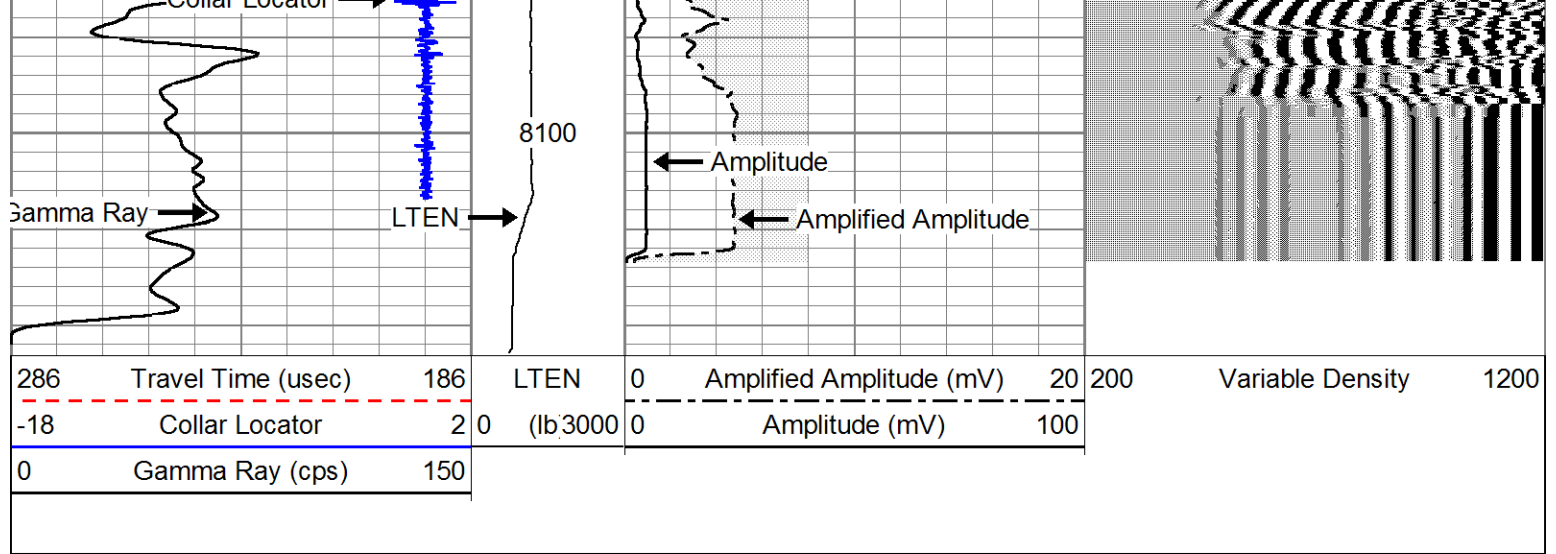
REPEAT PASS

O PSI

Database File: 73947cbleog.db
 Dataset Pathname: npark/judy1-30/run1/pass7
 Presentation Format: cbl02
 Dataset Creation: Mon Jul 07 10:46:14 2008 by Log Std Casedhole 07120
 Charted by: Depth in Feet scaled 1:240







REPEAT PASS

O PSI

Calibration Report

Database File: 73947cbleog.db
 Dataset Pathname: npark/judy1-30/run1/pass8
 Dataset Creation: Mon Jul 07 10:57:40 2008 by Log Std Casedhole 07120

Gamma Ray Calibration Report

Serial Number: 6
 Tool Model: MTEKCO
 Performed: Fri Nov 16 14:22:04 2001

Calibrator Value: 350.0 cps

Background Reading: 0.0 cps
 Calibrator Reading: 450.0 cps

Sensitivity: 0.7778 cps/cps

Cement Bond Log Calibration Report

Serial Number: T3-5CAN
 Tool Model: TECKCOCAN
 Performed: Mon Jul 07 10:08:35 2008

Depth: 1135.62 ft
 Casing Diameter: 7 in

3' Spacing 5' Spacing

Signal Zero: 1 mV
 Calibrated Amplitude: 62.1651 mV
 Reading at Signal Zero: 0.0145996 V
 Reading in Free Pipe: 1.60549 V

Gain: 38.4471 30.2115
 Offset: 0.438688 0.55376



Company: FOG RESOURCES, INC

Well: JUDY 1-30



Field	NORTH PARK
County	JACKSON
State	COLORADO