

BONANZA CREEK ENERGY INC.

WELD COUNTY, COLORADO (NAD 83)

SE SW SEC. 20 T5N R62W 6th P.M.

ANTELOPE 11-14-29HNC

ORIGINAL WELLBORE

05 October, 2016

Plan: PROPOSAL #2





Project: WELD COUNTY, COLORADO (NAD 83)
Site: SE SW SEC. 20 T5N R62W 6th P.M.
Well: ANTELOPE 11-14-29HNC
Wellbore: ORIGINAL WELLBORE
Design: PROPOSAL #2

ANNOTATIONS

TVD	MD	Inc	Azi	+N/-S	+E/-W	VSect	Dep	Annotation
1800.0	1800.0	0.00	0.00	0.0	0.0	0.0	0.0	START NUDGE (2°/100ft BUR)
2456.6	2462.5	13.25	258.35	-15.4	-74.7	27.3	76.3	EOB TO 13.25° INC
5382.0	5467.9	13.25	258.35	-154.4	-749.3	273.9	765.1	END OF TANGENT
6038.6	6130.4	0.00	0.00	-169.8	-824.0	301.2	841.3	EOD TO VERTICAL
6068.6	6160.4	0.00	0.00	-169.8	-824.0	301.2	841.3	KOP (12°/100ft BUR)
6529.8	6785.4	75.00	179.96	-523.7	-823.7	650.4	1195.2	START OF TANGENT
6555.7	6885.4	75.00	179.96	-620.3	-823.7	745.7	1291.8	END OF TANGENT
6571.9	7010.4	90.00	179.96	-743.9	-823.6	867.6	1415.4	HZ LANDING POINT (P2)
6571.9	11261.9	90.00	179.97	-4995.4	-821.0	5062.4	5666.9	BHL - ANTELOPE 11-14-29HNC (P2)

PROPOSED LOCAL COORDINATES:

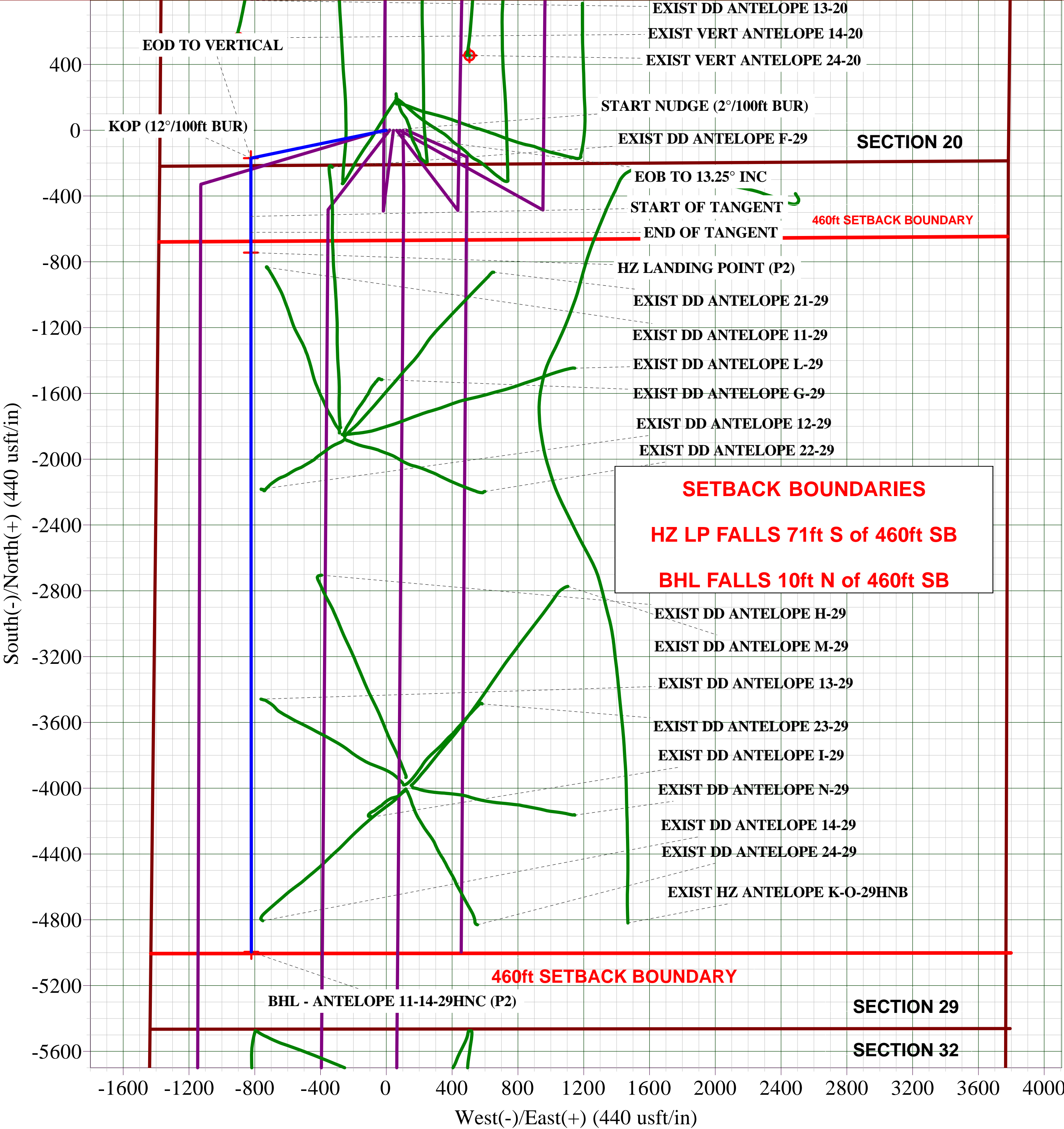
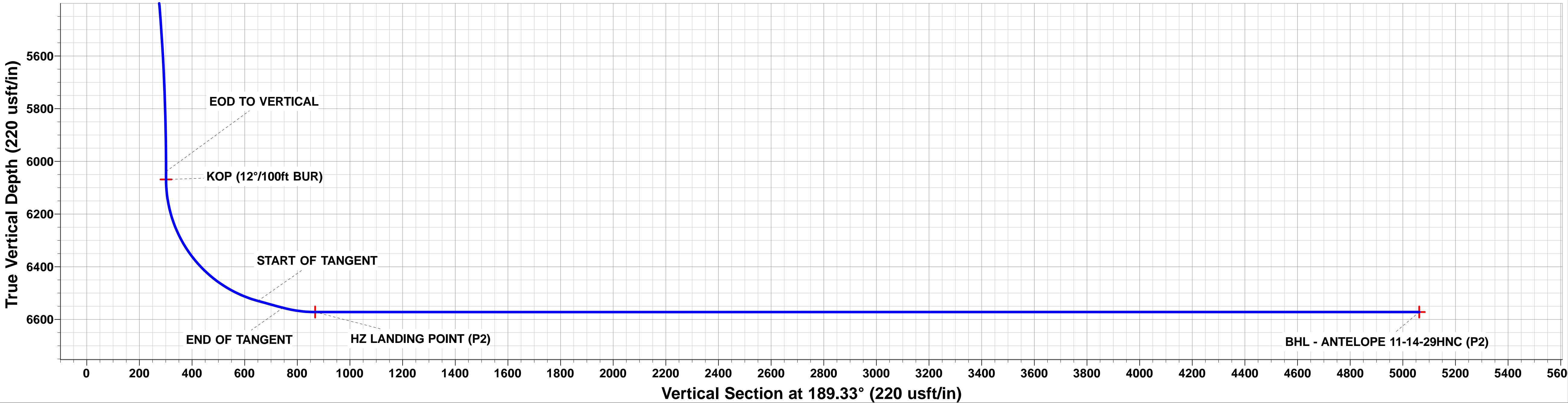
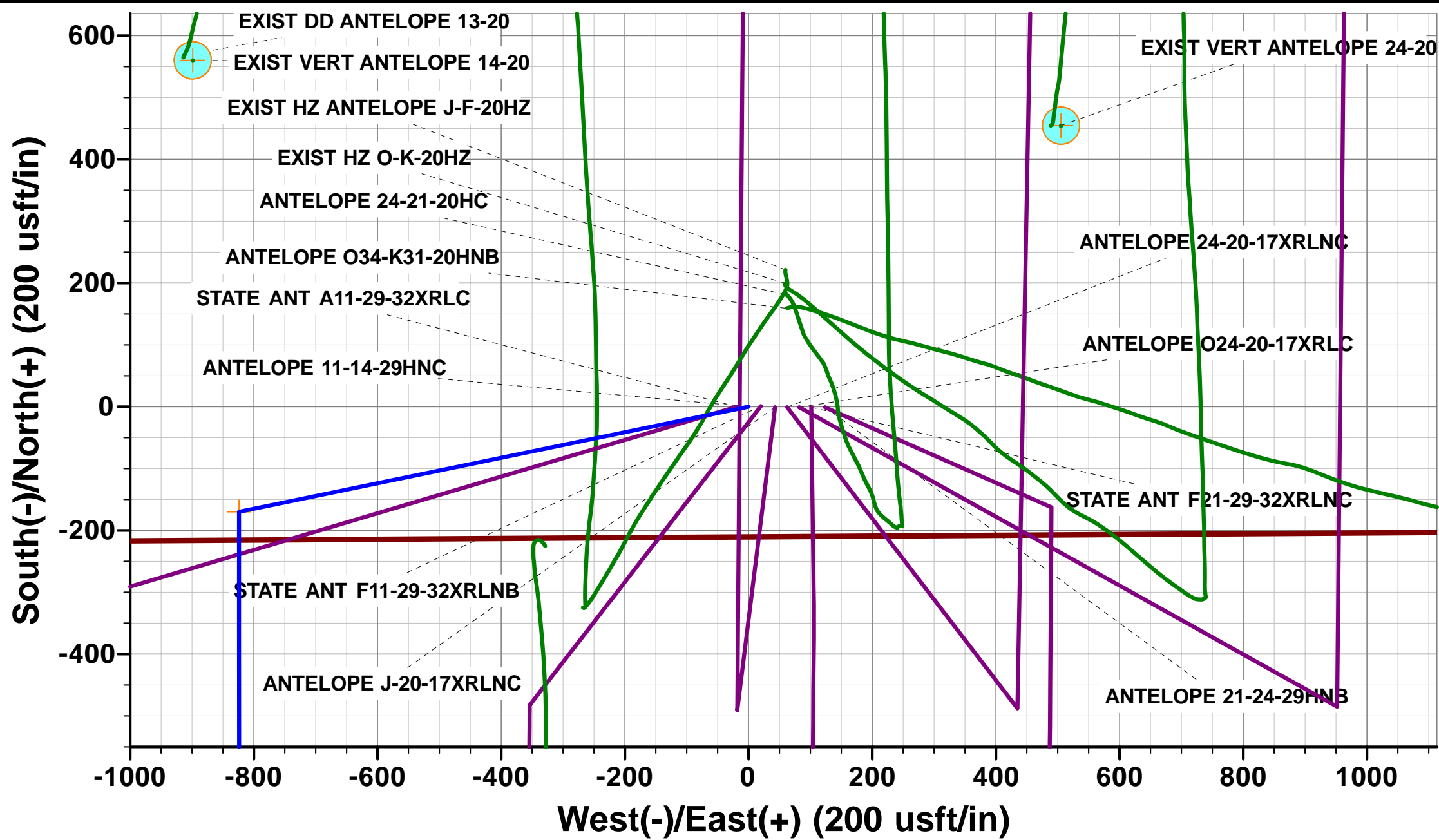
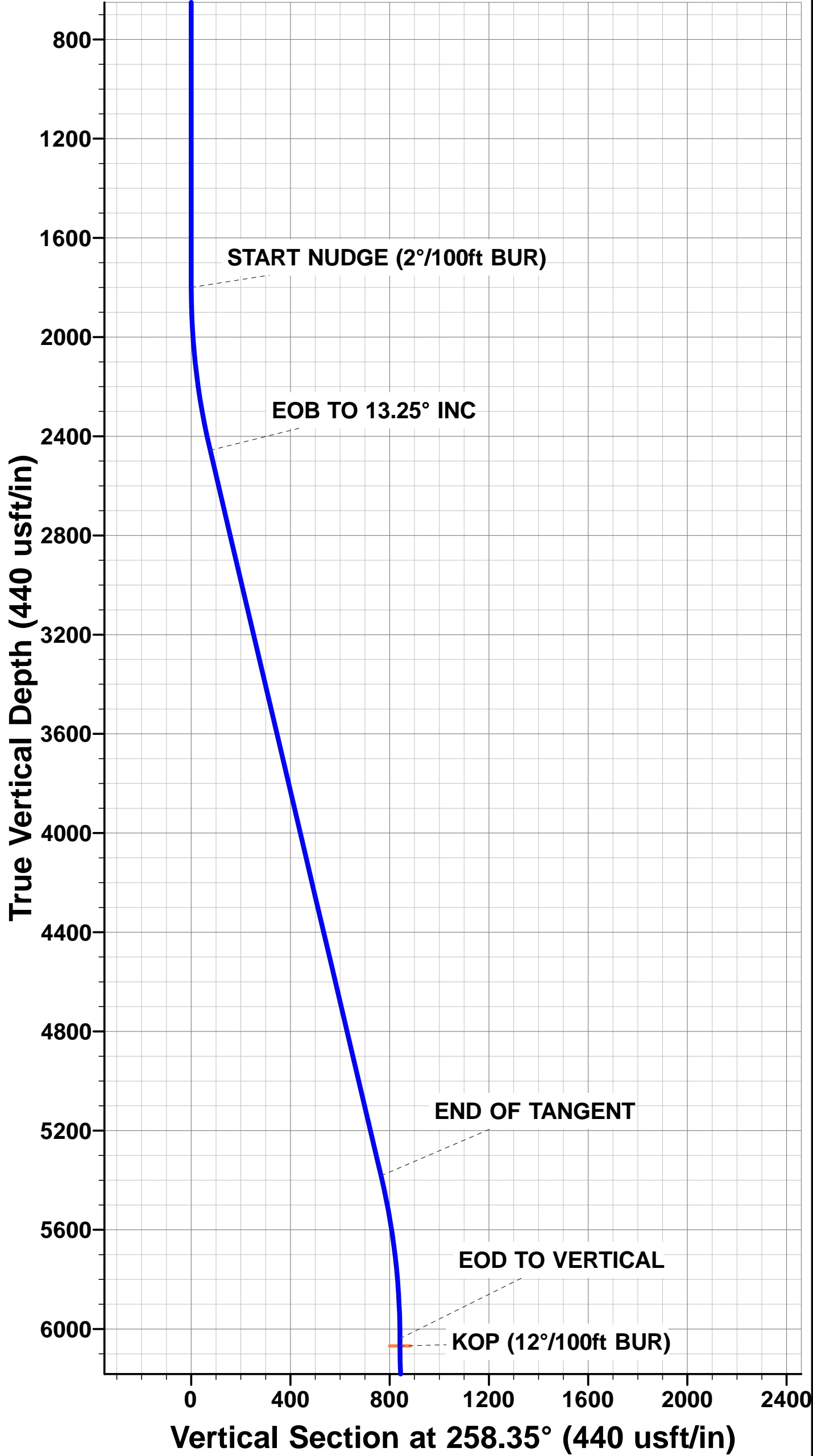
SHL: 210ft FSL & 1378ft FWL Sec 20

HZ LP: 531ft FNL & 560ft FWL Sec 29

BHL: 470ft FNL & 610ft FWL Sec 29

WELLBORE TARGET DETAILS (LAT/LONG)

Name	TVD	+N/-S	+E/-W	Latitude	Longitude
KOP - ANTELOPE 11-14-29HNC (P2)	6068.6	-169.8	-824.0	40.377956	-104.354721
BHL - ANTELOPE 11-14-29HNC (P2)	6571.9	-4995.4	-821.0	40.364710	-104.354710
HZ LP - ANTELOPE 11-14-29HNC (P2)	6571.9	-743.9	-823.6	40.376380	-104.354720



Database:	EDM 5000.1 Single User Db	Local Co-ordinate Reference:	Well ANTELOPE 11-14-29HNC
Company:	BONANZA CREEK ENERGY INC.	TVD Reference:	KB-EST @ 4681.9usft (Original Well Elev)
Project:	WELD COUNTY, COLORADO (NAD 83)	MD Reference:	KB-EST @ 4681.9usft (Original Well Elev)
Site:	SE SW SEC. 20 T5N R62W 6th P.M.	North Reference:	True
Well:	ANTELOPE 11-14-29HNC	Survey Calculation Method:	Minimum Curvature
Wellbore:	ORIGINAL WELLBORE		
Design:	PROPOSAL #2		

Project	WELD COUNTY, COLORADO (NAD 83)		
Map System:	US State Plane 1983	System Datum:	Mean Sea Level
Geo Datum:	North American Datum 1983		
Map Zone:	Colorado Northern Zone		Using geodetic scale factor

Site	SE SW SEC. 20 T5N R62W 6th P.M.				
Site Position:		Northing:	1,382,952.91 usft	Latitude:	40.378920
From:	Lat/Long	Easting:	3,319,945.73 usft	Longitude:	-104.351550
Position Uncertainty:	0.0 usft	Slot Radius:	1.10000 ft	Grid Convergence:	0.74 °

Well	ANTELOPE 11-14-29HNC					
Well Position	+N/-S	-181.4 usft	Northing:	1,382,770.72 usft	Latitude:	40.378422
	+E/-W	-59.6 usft	Easting:	3,319,888.47 usft	Longitude:	-104.351764
Position Uncertainty		0.0 usft	Wellhead Elevation:	usft	Ground Level:	4,664.9 usft

Wellbore	ORIGINAL WELLBORE				
Magnetics	Model Name	Sample Date	Declination (°)	Dip Angle (°)	Field Strength (nT)
	IGRF2015	21/07/2016	8.08	66.92	52,529

Design	PROPOSAL #2			
Audit Notes:				
Version:	Phase:	PROTOTYPE	Tie On Depth:	0.0
Vertical Section:	Depth From (TVD) (usft)	+N/-S (usft)	+E/-W (usft)	Direction (°)
	0.0	0.0	0.0	189.33

Plan Sections											
MD (usft)	Inc (°)	Azi (°)	Vertical Depth	SS (usft)	+N/-S (usft)	+E/-W (usft)	Dogleg Rate (°/100usf)	Build Rate (°/100usf)	Turn Rate (°/100usf)	TFO (°)	Target
0.0	0.00	0.00	0.0	-4,681.9	0.0	0.0	0.00	0.00	0.00	0.00	
1,800.0	0.00	0.00	1,800.0	-2,881.9	0.0	0.0	0.00	0.00	0.00	0.00	
2,462.5	13.25	258.35	2,456.6	-2,225.3	-15.4	-74.7	2.00	2.00	0.00	258.35	
5,467.9	13.25	258.35	5,382.0	700.1	-154.4	-749.3	0.00	0.00	0.00	0.00	
6,130.4	0.00	0.00	6,038.6	1,356.7	-169.8	-824.0	2.00	-2.00	0.00	180.00	
6,160.4	0.00	0.00	6,068.6	1,386.7	-169.8	-824.0	0.00	0.00	0.00	0.00	KOP - ANTELOPE
6,785.4	75.00	179.96	6,529.8	1,847.9	-523.7	-823.7	12.00	12.00	0.00	179.96	
6,885.4	75.00	179.96	6,555.7	1,873.8	-620.3	-823.7	0.00	0.00	0.00	0.00	
7,010.4	90.00	179.96	6,571.9	1,890.0	-743.9	-823.6	12.00	12.00	0.00	0.00	
11,261.9	90.00	179.97	6,571.9	1,890.0	-4,995.4	-821.0	0.00	0.00	0.00	81.93	BHL - ANTELOPE

Database:	EDM 5000.1 Single User Db	Local Co-ordinate Reference:	Well ANTELOPE 11-14-29HNC
Company:	BONANZA CREEK ENERGY INC.	TVD Reference:	KB-EST @ 4681.9usft (Original Well Elev)
Project:	WELD COUNTY, COLORADO (NAD 83)	MD Reference:	KB-EST @ 4681.9usft (Original Well Elev)
Site:	SE SW SEC. 20 T5N R62W 6th P.M.	North Reference:	True
Well:	ANTELOPE 11-14-29HNC	Survey Calculation Method:	Minimum Curvature
Wellbore:	ORIGINAL WELLBORE		
Design:	PROPOSAL #2		

Planned Survey

MD (usft)	Inc (°)	Azi (°)	TVD (usft)	SS (usft)	+N/-S (usft)	+E/-W (usft)	Vertical Section (usft)	Dogleg Rate (°/100usft)	Build Rate (°/100usft)	Turn Rate (°/100usft)
0.0	0.00	0.00	0.0	4,681.90	0.0	0.0	0.0	0.00	0.00	0.00
100.0	0.00	0.00	100.0	4,581.90	0.0	0.0	0.0	0.00	0.00	0.00
200.0	0.00	0.00	200.0	4,481.90	0.0	0.0	0.0	0.00	0.00	0.00
300.0	0.00	0.00	300.0	4,381.90	0.0	0.0	0.0	0.00	0.00	0.00
400.0	0.00	0.00	400.0	4,281.90	0.0	0.0	0.0	0.00	0.00	0.00
500.0	0.00	0.00	500.0	4,181.90	0.0	0.0	0.0	0.00	0.00	0.00
600.0	0.00	0.00	600.0	4,081.90	0.0	0.0	0.0	0.00	0.00	0.00
700.0	0.00	0.00	700.0	3,981.90	0.0	0.0	0.0	0.00	0.00	0.00
800.0	0.00	0.00	800.0	3,881.90	0.0	0.0	0.0	0.00	0.00	0.00
900.0	0.00	0.00	900.0	3,781.90	0.0	0.0	0.0	0.00	0.00	0.00
1,000.0	0.00	0.00	1,000.0	3,681.90	0.0	0.0	0.0	0.00	0.00	0.00
1,100.0	0.00	0.00	1,100.0	3,581.90	0.0	0.0	0.0	0.00	0.00	0.00
1,200.0	0.00	0.00	1,200.0	3,481.90	0.0	0.0	0.0	0.00	0.00	0.00
1,300.0	0.00	0.00	1,300.0	3,381.90	0.0	0.0	0.0	0.00	0.00	0.00
1,400.0	0.00	0.00	1,400.0	3,281.90	0.0	0.0	0.0	0.00	0.00	0.00
1,500.0	0.00	0.00	1,500.0	3,181.90	0.0	0.0	0.0	0.00	0.00	0.00
1,600.0	0.00	0.00	1,600.0	3,081.90	0.0	0.0	0.0	0.00	0.00	0.00
1,700.0	0.00	0.00	1,700.0	2,981.90	0.0	0.0	0.0	0.00	0.00	0.00
START NUDGE (2°/100ft BUR)										
1,800.0	0.00	0.00	1,800.0	2,881.90	0.0	0.0	0.0	0.00	0.00	0.00
1,900.0	2.00	258.35	1,900.0	2,781.92	-0.4	-1.7	0.6	2.00	2.00	0.00
2,000.0	4.00	258.35	1,999.8	2,682.06	-1.4	-6.8	2.5	2.00	2.00	0.00
2,100.0	6.00	258.35	2,099.5	2,582.45	-3.2	-15.4	5.6	2.00	2.00	0.00
2,200.0	8.00	258.35	2,198.7	2,483.20	-5.6	-27.3	10.0	2.00	2.00	0.00
2,300.0	10.00	258.35	2,297.5	2,384.43	-8.8	-42.6	15.6	2.00	2.00	0.00
2,400.0	12.00	258.35	2,395.6	2,286.28	-12.6	-61.3	22.4	2.00	2.00	0.00
EOB TO 13.25° INC										
2,462.5	13.25	258.35	2,456.6	2,225.33	-15.4	-74.7	27.3	2.00	2.00	0.00
2,500.0	13.25	258.35	2,493.1	2,188.79	-17.1	-83.1	30.4	0.00	0.00	0.00
2,600.0	13.25	258.35	2,590.5	2,091.45	-21.8	-105.6	38.6	0.00	0.00	0.00
2,700.0	13.25	258.35	2,687.8	1,994.11	-26.4	-128.0	46.8	0.00	0.00	0.00
2,800.0	13.25	258.35	2,785.1	1,896.77	-31.0	-150.5	55.0	0.00	0.00	0.00
2,900.0	13.25	258.35	2,882.5	1,799.43	-35.6	-172.9	63.2	0.00	0.00	0.00
3,000.0	13.25	258.35	2,979.8	1,702.10	-40.3	-195.3	71.4	0.00	0.00	0.00
3,100.0	13.25	258.35	3,077.1	1,604.76	-44.9	-217.8	79.6	0.00	0.00	0.00
3,200.0	13.25	258.35	3,174.5	1,507.42	-49.5	-240.2	87.8	0.00	0.00	0.00
3,300.0	13.25	258.35	3,271.8	1,410.08	-54.1	-262.7	96.0	0.00	0.00	0.00
3,400.0	13.25	258.35	3,369.2	1,312.74	-58.8	-285.1	104.2	0.00	0.00	0.00
3,500.0	13.25	258.35	3,466.5	1,215.40	-63.4	-307.6	112.4	0.00	0.00	0.00
3,600.0	13.25	258.35	3,563.8	1,118.07	-68.0	-330.0	120.6	0.00	0.00	0.00
3,700.0	13.25	258.35	3,661.2	1,020.73	-72.6	-352.5	128.8	0.00	0.00	0.00
3,800.0	13.25	258.35	3,758.5	923.39	-77.3	-374.9	137.0	0.00	0.00	0.00
3,900.0	13.25	258.35	3,855.8	826.05	-81.9	-397.4	145.3	0.00	0.00	0.00
4,000.0	13.25	258.35	3,953.2	728.71	-86.5	-419.8	153.5	0.00	0.00	0.00
4,100.0	13.25	258.35	4,050.5	631.37	-91.2	-442.3	161.7	0.00	0.00	0.00
4,200.0	13.25	258.35	4,147.9	534.04	-95.8	-464.7	169.9	0.00	0.00	0.00
4,300.0	13.25	258.35	4,245.2	436.70	-100.4	-487.1	178.1	0.00	0.00	0.00
4,400.0	13.25	258.35	4,342.5	339.36	-105.0	-509.6	186.3	0.00	0.00	0.00
4,500.0	13.25	258.35	4,439.9	242.02	-109.7	-532.0	194.5	0.00	0.00	0.00
4,600.0	13.25	258.35	4,537.2	144.68	-114.3	-554.5	202.7	0.00	0.00	0.00
4,700.0	13.25	258.35	4,634.6	47.34	-118.9	-576.9	210.9	0.00	0.00	0.00
4,800.0	13.25	258.35	4,731.9	-49.99	-123.5	-599.4	219.1	0.00	0.00	0.00
4,900.0	13.25	258.35	4,829.2	-147.33	-128.2	-621.8	227.3	0.00	0.00	0.00
5,000.0	13.25	258.35	4,926.6	-244.67	-132.8	-644.3	235.5	0.00	0.00	0.00

Database:	EDM 5000.1 Single User Db	Local Co-ordinate Reference:	Well ANTELOPE 11-14-29HNC
Company:	BONANZA CREEK ENERGY INC.	TVD Reference:	KB-EST @ 4681.9usft (Original Well Elev)
Project:	WELD COUNTY, COLORADO (NAD 83)	MD Reference:	KB-EST @ 4681.9usft (Original Well Elev)
Site:	SE SW SEC. 20 T5N R62W 6th P.M.	North Reference:	True
Well:	ANTELOPE 11-14-29HNC	Survey Calculation Method:	Minimum Curvature
Wellbore:	ORIGINAL WELLBORE		
Design:	PROPOSAL #2		

Planned Survey

MD (usft)	Inc (°)	Azi (°)	TVD (usft)	SS (usft)	+N/-S (usft)	+E/-W (usft)	Vertical Section (usft)	Dogleg Rate (°/100usft)	Build Rate (°/100usft)	Turn Rate (°/100usft)
5,100.0	13.25	258.35	5,023.9	-342.01	-137.4	-666.7	243.7	0.00	0.00	0.00
5,200.0	13.25	258.35	5,121.2	-439.35	-142.0	-689.2	251.9	0.00	0.00	0.00
5,300.0	13.25	258.35	5,218.6	-536.68	-146.7	-711.6	260.1	0.00	0.00	0.00
5,400.0	13.25	258.35	5,315.9	-634.02	-151.3	-734.1	268.3	0.00	0.00	0.00
END OF TANGENT										
5,467.9	13.25	258.35	5,382.0	-700.13	-154.4	-749.3	273.9	0.00	0.00	0.00
5,500.0	12.61	258.35	5,413.3	-731.40	-155.9	-756.3	276.5	2.00	-2.00	0.00
5,600.0	10.61	258.35	5,511.3	-829.35	-159.9	-776.0	283.7	2.00	-2.00	0.00
5,700.0	8.61	258.35	5,609.8	-927.94	-163.3	-792.4	289.7	2.00	-2.00	0.00
5,800.0	6.61	258.35	5,709.0	-1,027.06	-166.0	-805.4	294.4	2.00	-2.00	0.00
5,900.0	4.61	258.35	5,808.5	-1,126.58	-168.0	-814.9	297.9	2.00	-2.00	0.00
6,000.0	2.61	258.35	5,908.3	-1,226.37	-169.2	-821.1	300.1	2.00	-2.00	0.00
6,100.0	0.61	258.35	6,008.2	-1,326.33	-169.8	-823.8	301.1	2.00	-2.00	0.00
EOD TO VERTICAL										
6,130.4	0.00	0.00	6,038.6	-1,356.70	-169.8	-824.0	301.2	2.00	-2.00	0.00
KOP (12°/100ft BUR)										
6,160.4	0.00	0.00	6,068.6	-1,386.70	-169.8	-824.0	301.2	0.00	0.00	0.00
6,200.0	4.76	179.96	6,108.2	-1,426.28	-171.5	-824.0	302.8	12.00	12.00	0.00
6,300.0	16.76	179.96	6,206.2	-1,524.35	-190.1	-824.0	321.2	12.00	12.00	0.00
6,400.0	28.76	179.96	6,298.3	-1,616.39	-228.7	-823.9	359.3	12.00	12.00	0.00
6,500.0	40.76	179.96	6,380.3	-1,698.40	-285.6	-823.9	415.4	12.00	12.00	0.00
6,600.0	52.76	179.96	6,448.7	-1,766.79	-358.3	-823.9	487.2	12.00	12.00	0.00
6,700.0	64.76	179.96	6,500.5	-1,818.56	-443.7	-823.8	571.4	12.00	12.00	0.00
START OF TANGENT										
6,785.4	75.00	179.96	6,529.8	-1,847.90	-523.7	-823.7	650.4	12.00	12.00	0.00
6,800.0	75.00	179.96	6,533.6	-1,851.68	-537.8	-823.7	664.3	0.00	0.00	0.00
END OF TANGENT										
6,885.4	75.00	179.96	6,555.7	-1,873.78	-620.3	-823.7	745.7	0.00	0.00	0.00
6,900.0	76.76	179.96	6,559.2	-1,877.35	-634.5	-823.7	759.7	12.00	12.00	0.00
7,000.0	88.76	179.96	6,571.8	-1,889.93	-733.5	-823.6	857.4	12.00	12.00	0.00
HZ LANDING POINT (P2)										
7,010.4	90.00	179.96	6,571.9	-1,890.05	-743.9	-823.6	867.6	12.00	12.00	0.00
7,100.0	90.00	179.96	6,571.9	-1,890.05	-833.5	-823.5	956.0	0.00	0.00	0.00
7,200.0	90.00	179.96	6,571.9	-1,890.05	-933.5	-823.5	1,054.7	0.00	0.00	0.00
7,300.0	90.00	179.96	6,571.9	-1,890.05	-1,033.5	-823.4	1,153.4	0.00	0.00	0.00
7,400.0	90.00	179.96	6,571.9	-1,890.05	-1,133.5	-823.3	1,252.0	0.00	0.00	0.00
7,500.0	90.00	179.96	6,571.9	-1,890.05	-1,233.5	-823.3	1,350.7	0.00	0.00	0.00
7,600.0	90.00	179.96	6,571.9	-1,890.05	-1,333.5	-823.2	1,449.4	0.00	0.00	0.00
7,700.0	90.00	179.96	6,571.9	-1,890.05	-1,433.5	-823.1	1,548.0	0.00	0.00	0.00
7,800.0	90.00	179.96	6,571.9	-1,890.05	-1,533.5	-823.1	1,646.7	0.00	0.00	0.00
7,900.0	90.00	179.96	6,571.9	-1,890.04	-1,633.5	-823.0	1,745.4	0.00	0.00	0.00
8,000.0	90.00	179.96	6,571.9	-1,890.04	-1,733.5	-822.9	1,844.0	0.00	0.00	0.00
8,100.0	90.00	179.96	6,571.9	-1,890.04	-1,833.5	-822.9	1,942.7	0.00	0.00	0.00
8,200.0	90.00	179.96	6,571.9	-1,890.04	-1,933.5	-822.8	2,041.4	0.00	0.00	0.00
8,300.0	90.00	179.96	6,571.9	-1,890.04	-2,033.5	-822.7	2,140.0	0.00	0.00	0.00
8,400.0	90.00	179.96	6,571.9	-1,890.04	-2,133.5	-822.7	2,238.7	0.00	0.00	0.00
8,500.0	90.00	179.96	6,571.9	-1,890.04	-2,233.5	-822.6	2,337.3	0.00	0.00	0.00
8,600.0	90.00	179.96	6,571.9	-1,890.04	-2,333.5	-822.5	2,436.0	0.00	0.00	0.00
8,700.0	90.00	179.96	6,571.9	-1,890.04	-2,433.5	-822.5	2,534.7	0.00	0.00	0.00
8,800.0	90.00	179.96	6,571.9	-1,890.04	-2,533.5	-822.4	2,633.3	0.00	0.00	0.00
8,900.0	90.00	179.96	6,571.9	-1,890.04	-2,633.5	-822.3	2,732.0	0.00	0.00	0.00
9,000.0	90.00	179.96	6,571.9	-1,890.04	-2,733.5	-822.3	2,830.7	0.00	0.00	0.00
9,100.0	90.00	179.96	6,571.9	-1,890.04	-2,833.5	-822.2	2,929.3	0.00	0.00	0.00

Database:	EDM 5000.1 Single User Db	Local Co-ordinate Reference:	Well ANTELOPE 11-14-29HNC
Company:	BONANZA CREEK ENERGY INC.	TVD Reference:	KB-EST @ 4681.9usft (Original Well Elev)
Project:	WELD COUNTY, COLORADO (NAD 83)	MD Reference:	KB-EST @ 4681.9usft (Original Well Elev)
Site:	SE SW SEC. 20 T5N R62W 6th P.M.	North Reference:	True
Well:	ANTELOPE 11-14-29HNC	Survey Calculation Method:	Minimum Curvature
Wellbore:	ORIGINAL WELLBORE		
Design:	PROPOSAL #2		

Planned Survey

MD (usft)	Inc (°)	Azi (°)	TVD (usft)	SS (usft)	+N/-S (usft)	+E/-W (usft)	Vertical Section (usft)	Dogleg Rate (°/100usft)	Build Rate (°/100usft)	Turn Rate (°/100usft)
9,200.0	90.00	179.96	6,571.9	-1,890.03	-2,933.5	-822.1	3,028.0	0.00	0.00	0.00
9,300.0	90.00	179.96	6,571.9	-1,890.03	-3,033.5	-822.1	3,126.7	0.00	0.00	0.00
9,400.0	90.00	179.96	6,571.9	-1,890.03	-3,133.5	-822.0	3,225.3	0.00	0.00	0.00
9,500.0	90.00	179.97	6,571.9	-1,890.03	-3,233.5	-822.0	3,324.0	0.00	0.00	0.00
9,600.0	90.00	179.97	6,571.9	-1,890.03	-3,333.5	-821.9	3,422.7	0.00	0.00	0.00
9,700.0	90.00	179.97	6,571.9	-1,890.03	-3,433.5	-821.8	3,521.3	0.00	0.00	0.00
9,800.0	90.00	179.97	6,571.9	-1,890.03	-3,533.5	-821.8	3,620.0	0.00	0.00	0.00
9,900.0	90.00	179.97	6,571.9	-1,890.03	-3,633.5	-821.7	3,718.7	0.00	0.00	0.00
10,000.0	90.00	179.97	6,571.9	-1,890.02	-3,733.5	-821.7	3,817.3	0.00	0.00	0.00
10,100.0	90.00	179.97	6,571.9	-1,890.02	-3,833.5	-821.6	3,916.0	0.00	0.00	0.00
10,200.0	90.00	179.97	6,571.9	-1,890.02	-3,933.5	-821.5	4,014.7	0.00	0.00	0.00
10,300.0	90.00	179.97	6,571.9	-1,890.02	-4,033.5	-821.5	4,113.3	0.00	0.00	0.00
10,400.0	90.00	179.97	6,571.9	-1,890.02	-4,133.5	-821.4	4,212.0	0.00	0.00	0.00
10,500.0	90.00	179.97	6,571.9	-1,890.02	-4,233.5	-821.4	4,310.7	0.00	0.00	0.00
10,600.0	90.00	179.97	6,571.9	-1,890.01	-4,333.5	-821.3	4,409.3	0.00	0.00	0.00
10,700.0	90.00	179.97	6,571.9	-1,890.01	-4,433.5	-821.3	4,508.0	0.00	0.00	0.00
10,800.0	90.00	179.97	6,571.9	-1,890.01	-4,533.5	-821.2	4,606.7	0.00	0.00	0.00
10,900.0	90.00	179.97	6,571.9	-1,890.01	-4,633.5	-821.2	4,705.3	0.00	0.00	0.00
11,000.0	90.00	179.97	6,571.9	-1,890.01	-4,733.5	-821.1	4,804.0	0.00	0.00	0.00
11,100.0	90.00	179.97	6,571.9	-1,890.00	-4,833.5	-821.0	4,902.7	0.00	0.00	0.00
11,200.0	90.00	179.97	6,571.9	-1,890.00	-4,933.5	-821.0	5,001.3	0.00	0.00	0.00
BHL - ANTELOPE 11-14-29HNC (P2)										
11,261.9	90.00	179.97	6,571.9	-1,890.00	-4,995.4	-821.0	5,062.4	0.00	0.00	0.00

Plan Annotations

MD (usft)	TVD (usft)	Local Coordinates		Comment
		+N/-S (usft)	+E/-W (usft)	
1,800.0	1,800.0	0.0	0.0	START NUDGE (2°/100ft BUR)
2,462.5	2,456.6	-15.4	-74.7	EOB TO 13.25° INC
5,467.9	5,382.0	-154.4	-749.3	END OF TANGENT
6,130.4	6,038.6	-169.8	-824.0	EOD TO VERTICAL
6,160.4	6,068.6	-169.8	-824.0	KOP (12°/100ft BUR)
6,785.4	6,529.8	-523.7	-823.7	START OF TANGENT
6,885.4	6,555.7	-620.3	-823.7	END OF TANGENT
7,010.4	6,571.9	-743.9	-823.6	HZ LANDING POINT (P2)
11,261.9	6,571.9	-4,995.4	-821.0	BHL - ANTELOPE 11-14-29HNC (P2)