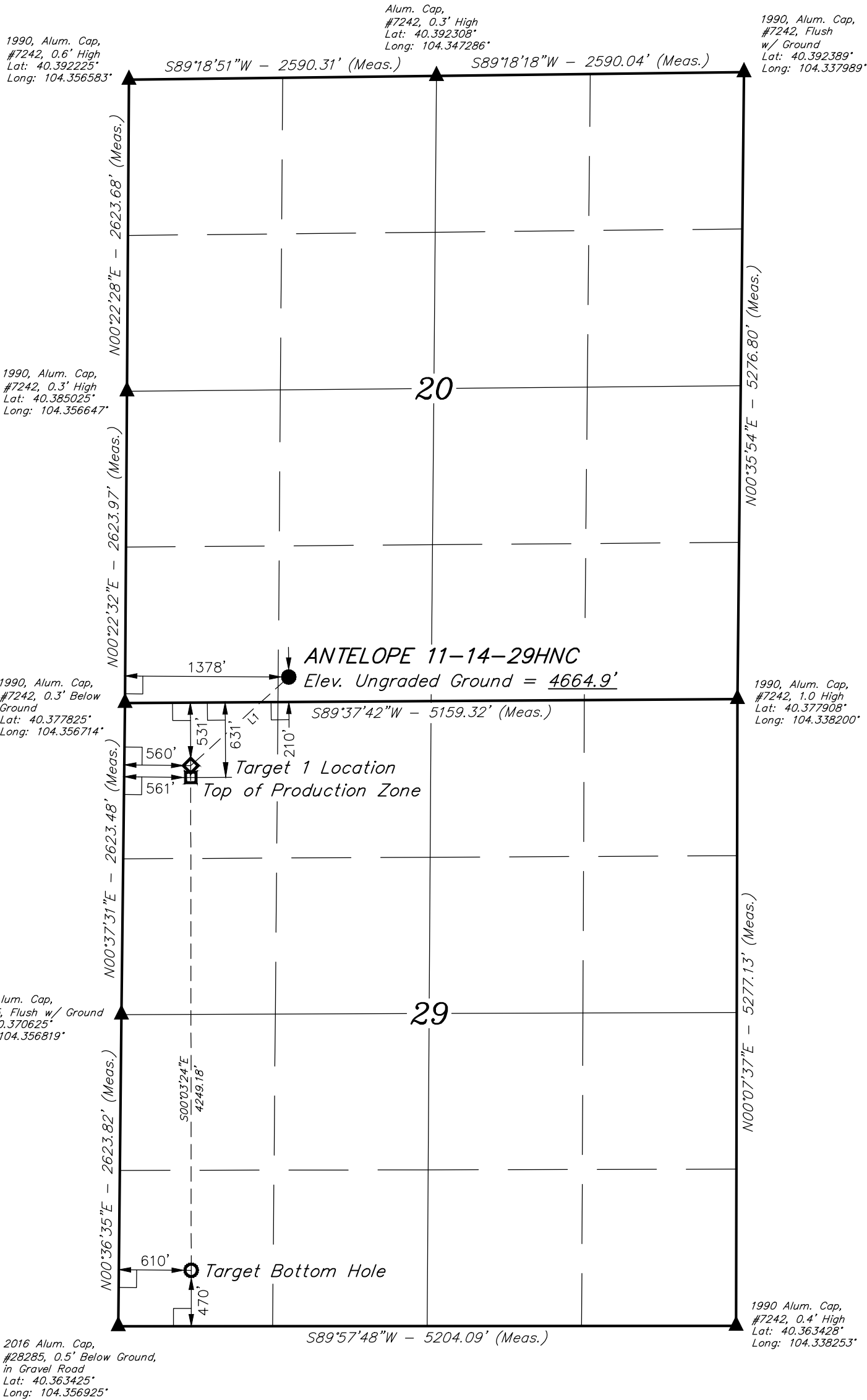


LEGEND:

- └─ = 90° SYMBOL  
● = PROPOSED WELLHEAD.  
◆ = TARGET 1 LOCATION.  
□ = TOP OF PRODUCTION ZONE.  
○ = TARGET BOTTOM HOLE.  
▲ = SECTION CORNERS LOCATED. (NAD 83)

T5N, R62W, 6th P.M.



NAD 83 (SURFACE LOCATION)
LATITUDE = 40°22'42.32" (40.378422)
LONGITUDE = 104°21'06.35" (104.351764)
NAD 83 (TARGET 1 LOCATION)
LATITUDE = 40°22'34.96" (40.376378)
LONGITUDE = 104°21'17.01" (104.354725)
NAD 83 (TOP OF PRODUCTION ZONE)
LATITUDE = 40°22'33.97" (40.376103)
LONGITUDE = 104°21'17.01" (104.354725)
NAD 83 (TARGET BOTTOM HOLE)
LATITUDE = 40°21'52.98" (40.364717)
LONGITUDE = 104°21'16.98" (104.354717)

PDOP = 1.5

LINE TABLE		
LINE	DIRECTION	LENGTH
L1	S47°53'05"W	1112.41'

CERTIFICATE

THIS IS TO CERTIFY THAT THE ABOVE LAND WAS PREPARED FROM FIELD NOTES OF ACTUAL SURVEYS MADE BY ME OR UNDER MY SUPERVISION, AND THAT THE SAME ARE TRUE AND CORRECT TO THE BEST OF MY KNOWLEDGE AND BELIEF.

REGISTERED LAND SURVEYOR  
REGISTRATION NO. 28285  
STATE OF COLORADO

REV: 1 09-08-16 M.F.D. (SURFACE HOLE CHANGE)

BASIS OF BEARINGS  
BASIS OF BEARINGS IS A G.P.S. OBSERVATION

BASIS OF ELEVATION  
USGS COOPERATIVE BASE NETWORK CONTROL STATION, DESIGNATION "M 414". NGS DATA SHEET LISTS THE NAVD 88 ELEVATION AS BEING 4600.58 FEET.



UELS, LLC  
Corporate Office \* 85 South 200 East  
Vernal, UT 84078 \* (435) 789-1017



BONANZA CREEK ENERGY  
OPERATING COMPANY, LLC

ANTELOPE 11-14-29HNC  
SE 1/4 SW 1/4, SECTION 20, T5N, R62W, 6th P.M.  
WELD COUNTY, COLORADO

SURVEYED BY	JARED CHRISTOPHER, C.M.	06-17-16	SCALE
DRAWN BY	M.F.D.	09-08-16	1" = 1000'

WELL LOCATION PLAT