

HALLIBURTON

iCem[®] Service

WPX ENERGY LLC-EBUS

For: Mark Mewshaw

Date: Wednesday, July 06, 2016

GM 532-9 Surface

API # 05-045-22536-00

Sincerely,

Grand Junction Cement Engineering

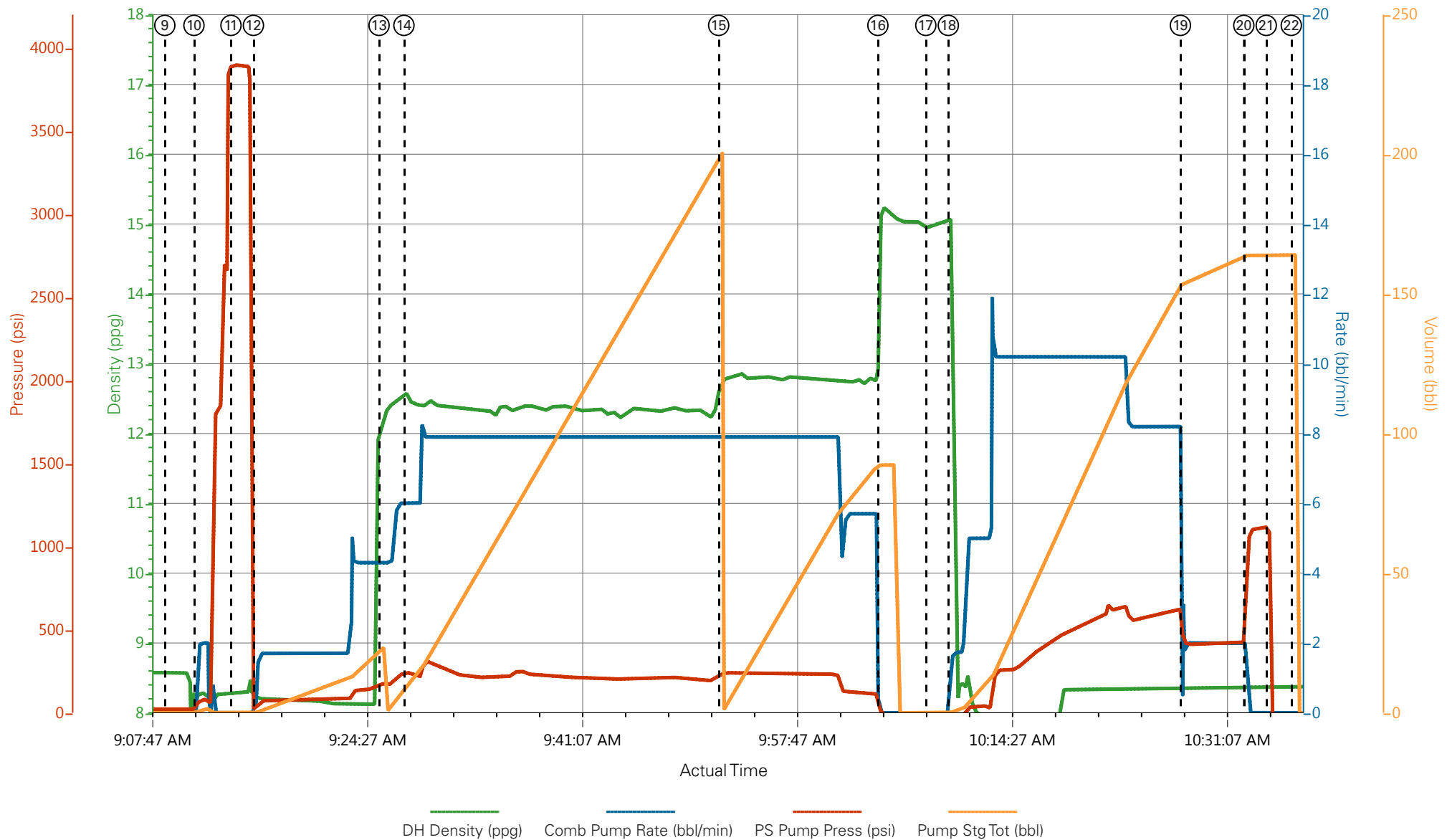
1.0 Real-Time Job Summary

1.1 Job Event Log

Type	Seq. No.	Graph Label	Date	Time	Source	DH Density (ppg)	Comb Pump Rate (bbl/min)	PS Pump Press (psi)	Pump Stg Tot (bbl)	Comments
Event	1	Call Out	7/5/2016	22:00:00	USER					O/L time 0400
Event	2	Pre-Convoy Safety Meeting	7/5/2016	23:45:00	USER					
Event	3	Crew Leave Yard	7/6/2016	00:00:00	USER					1 Red Tiger, 2660s, 1 pickup
Event	4	Arrive At Location	7/6/2016	02:00:00	USER					Rig still drilling
Event	5	Assessment Of Location Safety Meeting	7/6/2016	02:15:00	USER					JSA completed - customer offered/received SDS - water test pH 8.0, Cl 0, temp 68 degrees
Event	6	Pre-Rig Up Safety Meeting	7/6/2016	05:45:00	USER					
Event	7	Rig-Up Equipment	7/6/2016	06:00:00	USER					Hard line to standpipe, water hoses to upright and day tank, bulk hoses to 660s
Event	8	Pre-Job Safety Meeting	7/6/2016	08:50:00	USER					All HES personnel, rig crew, and company rep
Event	9	Start Job	7/6/2016	09:09:00	USER					TD 2088', TP 2078', SJ 47', Mud 9.9#, 13 1/2" OH, 9 5/8" 36# J-55 casing
Event	10	Prime Pumps	7/6/2016	09:11:15	COM5	8.33	2.0	97	2.0	Fresh water
Event	11	Test Lines	7/6/2016	09:14:07	COM5			3913		Pressure held well
Event	12	Pump H2O Spacer	7/6/2016	09:15:52	COM5	8.33	4.0	145	20.0	Fresh water ahead
Event	13	Pump Lead Cement	7/6/2016	09:25:36	COM5	12.3	8.0	330	156.8	370 sks VariCem, 12.3 ppg, 2.38 yield, 13.77 gal/sk
Event	14	Check weight	7/6/2016	09:27:32	COM5	12.3				Recirc matched mud scales
Event	15	Pump Tail Cement	7/6/2016	09:51:56	COM5	12.8	8.0	257	71.4	190 sks VariCem, 12.8 ppg, 2.11 yield, 11.78 gal/sk
Event	16	Shutdown	7/6/2016	10:04:17	USER					Wash up on top of plug
Event	17	Drop Top Plug	7/6/2016	10:08:00	COM5					Plug launched
Event	18	Pump Displacement	7/6/2016	10:09:45	COM5	8.33	10.0	654	157.0	Fresh water

Event	19	Slow Rate	7/6/2016	10:27:44	USER	8.33	2.0	425	10.0	Good returns throughout job
Event	20	Bump Plug	7/6/2016	10:32:39	COM5			456		Approx 50 bbls cement to surface
Event	21	Check Floats	7/6/2016	10:34:24	USER			990		Floats held – ½ bbl flowback
Event	22	End Job	7/6/2016	10:36:20	COM5					No add hours, no derrick charge – 40 lbs sugar used
Event	23	Pre-Rig Down Safety Meeting	7/6/2016	10:45:00	USER					
Event	24	Rig-Down Equipment	7/6/2016	11:00:00	USER					
Event	25	Pre-Convoy Safety Meeting	7/6/2016	11:45:00	USER					
Event	26	Crew Leave Location	7/6/2016	12:00:00	USER					Thank you for using Halliburton - Ed Deussen and crew

WPX - RU 532-9 - 9 5/8" Surface



- | | | | | | |
|---|-----------------------------|--------------------|---------------------|--------------------------------|------------------------|
| ① Call Out | ⑥ Pre-Rig Up Safety Meeting | ⑪ Test Lines | ⑯ Shutdown | 21 Check Floats | 26 Crew Leave Location |
| ② Pre-Convoy Safety Meeting | ⑦ Rig-Up Equipment | ⑫ Pump H2O Spacer | ⑰ Drop Top Plug | 22 End Job | |
| ③ Crew Leave Yard | ⑧ Pre-Job Safety Meeting | ⑬ Pump Lead Cement | ⑱ Pump Displacement | 23 Pre-Rig Down Safety Meeting | |
| ④ Arrive At Location | ⑨ Start Job | ⑭ Check weight | ⑲ Slow Rate | 24 Rig-Down Equipment | |
| ⑤ Assessment Of Location Safety Meeting | ⑩ Prime Pumps | ⑮ Pump Tail Cement | 20 Bump Plug | 25 Pre-Convoy Safety Meeting | |

WPX - RU 532-9 - 9 5/8" Surface

