

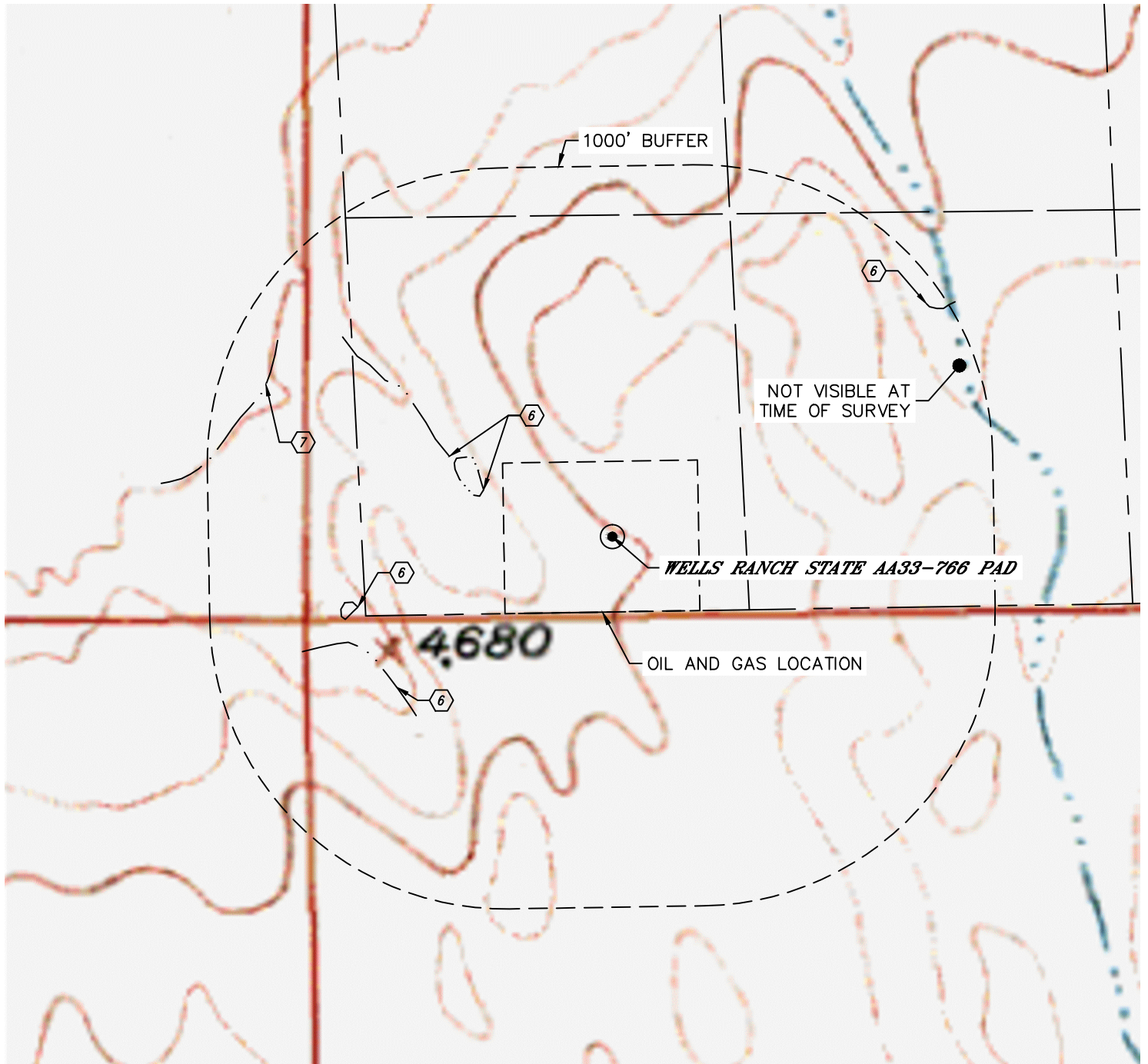


Lat40°, Inc. 6250 W. 10th Street, Unit 2, Greeley, CO 970-515-5294

HYDROLOGY MAP

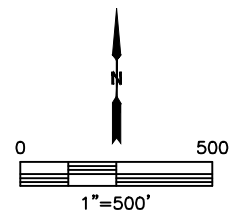
WELLS RANCH STATE AA33-766 PAD

SECTION: 21
TOWNSHIP: 6N
RANGE: 63W
6TH. P.M.
WELD COUNTY, CO



DISTANCES MEASURED FROM EDGE OF OIL AND GAS LOCATION.

- ⑥ LOW AREA 66' & 498' W, 182' NW, 443' SW, 939' NE
- ⑦ DITCH 844' NW



DATE: 7/29/2015
PROJECT#: 2015083