

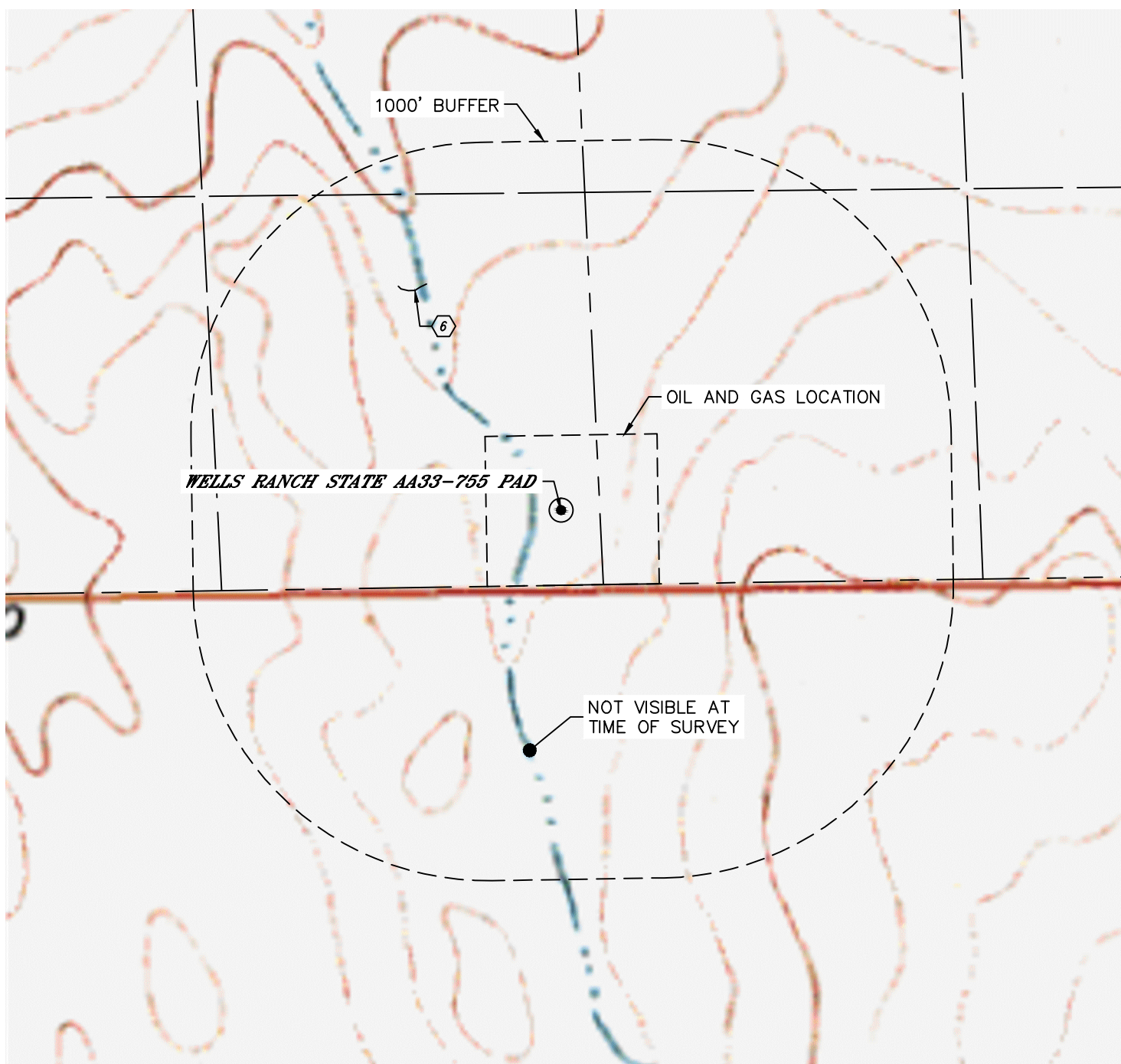


Lat40°, Inc. 6250 W. 10th Street, Unit 2, Greeley, CO 970-515-5294

# HYDROLOGY MAP

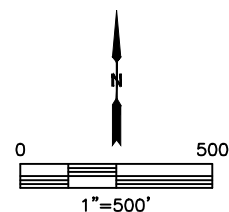
## WELLS RANCH STATE AA33-755 PAD

SECTION: 21  
TOWNSHIP: 6N  
RANGE: 63W  
6TH. P.M.  
WELD COUNTY, CO



DISTANCES MEASURED FROM EDGE OF OIL AND GAS LOCATION.

6 LOW AREA 549' NW



DATE: 7/29/2015  
PROJECT#: 2015083