

Kyle E. Rutz—On behalf of L&L  
Colorado Licensed Professional Land Surveyor No. 38307  
DATE: 8/4/2015  
PROJECT#: 2015083

Kyle E. Rutz—On behalf of L&L Surveying, Inc.  
Colorado Licensed Professional Land Surveyor No. 38307  
DATE: 8/4/2015  
PROJECT#: 2015083

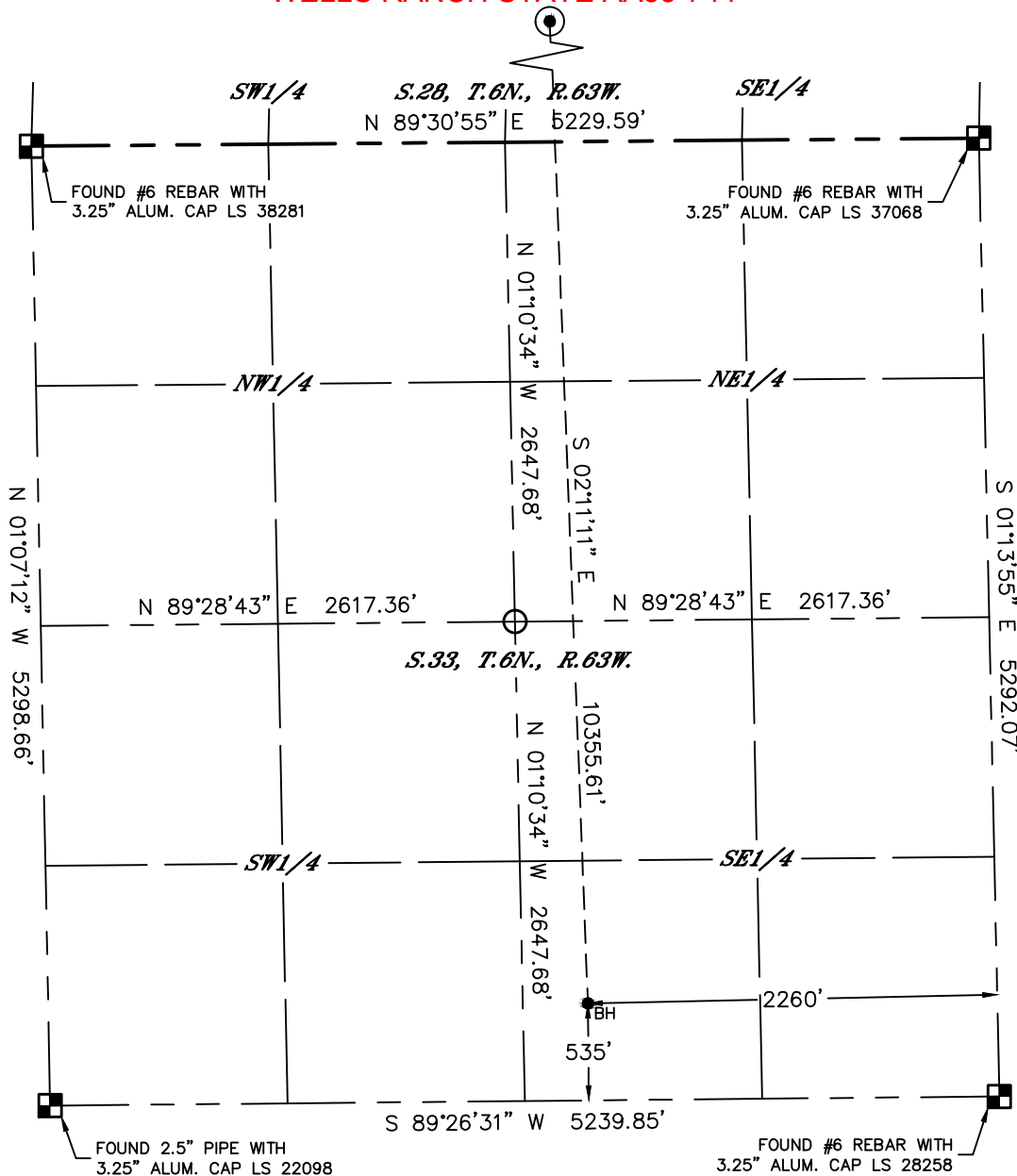


Lat40°, Inc. 6250 W. 10th Street, Unit 2, Greeley, CO 970-515-5294

# WELL LOCATION CERTIFICATE

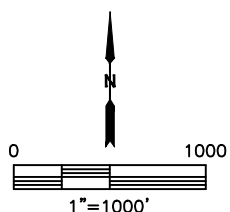
WELLS RANCH STATE AA33-744

SECTION: 21  
TOWNSHIP: 6N  
RANGE: 63W  
6TH. P.M.  
WELD COUNTY, CO



## LEGEND

- = ALIQUOT MONUMENT AS DESCRIBED
- = CALCULATED POSITION
- ⊙ = SURFACE HOLE LOCATION (SHL)
- ▲ = ENTRY POINT LOCATION (EP)
- <sub>BH</sub> = BOTTOM HOLE LOCATION (BHL)
- ⊕ = EXISTING WELL
- ⊖ = ABANDONED WELL



SHEET 3 OF 3

Kyle E. Rutz—On behalf of Lat40, Inc.  
Colorado Licensed Professional Land Surveyor No. 38307  
DATE: 7/29/2015  
PROJECT#: 2015083