

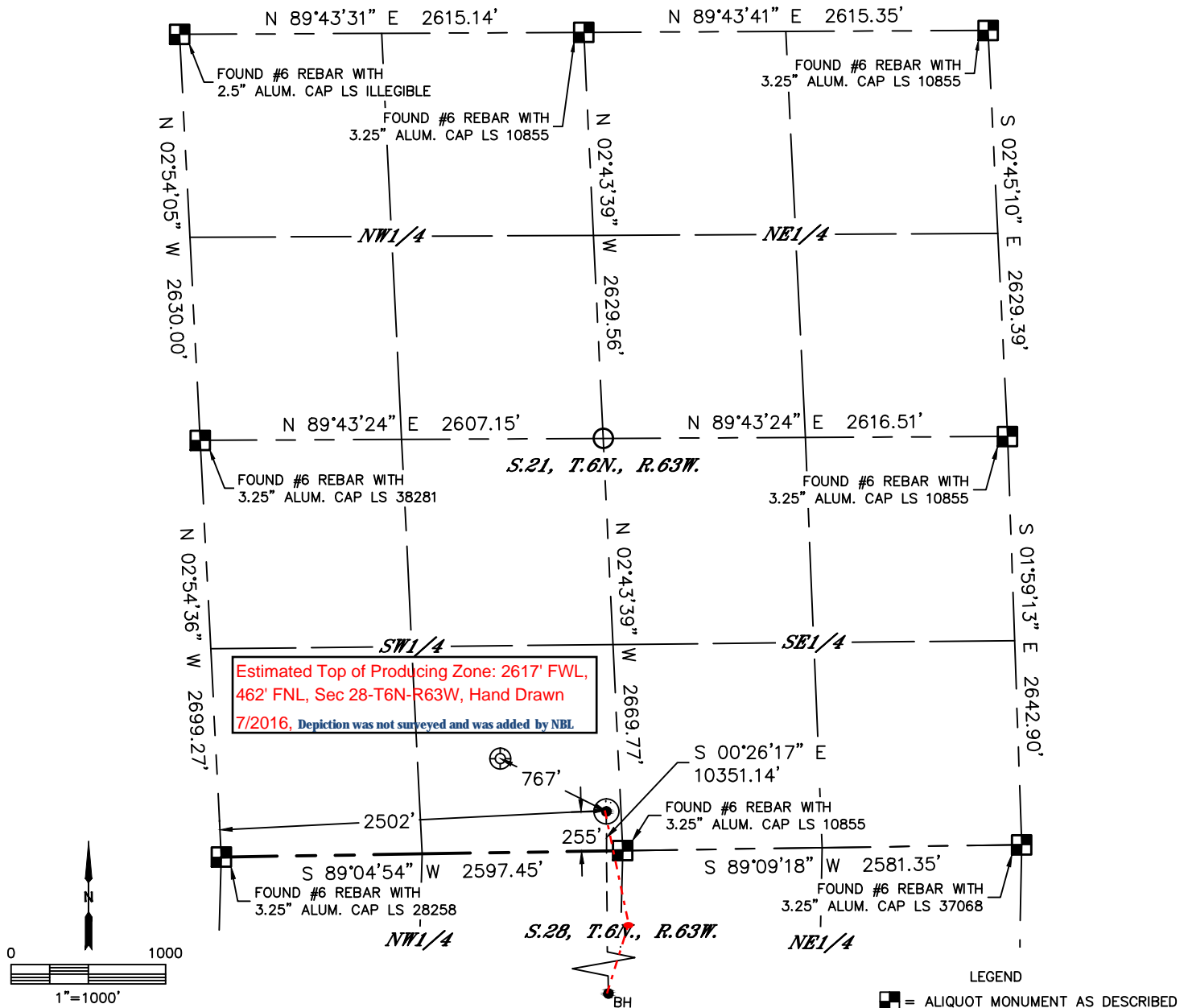


Lat40°, Inc. 6250 W. 10th Street, Unit 2, Greeley, CO 970-515-5294

WELL LOCATION CERTIFICATE

WELLS RANCH STATE AA33-750

SECTION: 21
TOWNSHIP: 6N
RANGE: 63W
6TH. P.M.
WELD COUNTY, CO



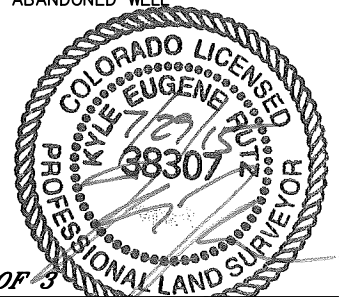
CLIENT: NOBLE ENERGY, INC.						LANDMAN: GREG WILSON			
INSTRUMENT OPERATOR: CHASE MILLER						SURVEY DATE: 6/16/2015		SURFACE USE: RANGELAND	
SHL FOOTAGE				SHL LAT °	SHL LONG °	SHL PDOP	SHL ELEV	SHL 1/4/1/4	SHL S-T-R
255	FSL	2502	FWL	40.46555	-104.44181	1.5	4720	SESW	21-6-63

BHL FOOTAGE				BHL LAT °	BHL LONG °	BHL S-T-R
535	FSL	2613	FEL	40.43714	-104.44197	33-6-63

NEAREST EXISTING WELL IN SHL 1/4/1/4	
EX. WELLS RANCH AA21-14	±767' NW
NEAREST CULTURAL ITEMS	
BUILDING	±2720' SE
BUILDING UNIT	±4403' NW
HIGH OCCUPANCY BUILDING UNIT	5280' +
DESIGNATED OUTSIDE ACTIVITY AREA	5280' +
PUBLIC ROAD (COUNTY ROAD 66.5)	±3565' NW
ABOVE GROUND UTILITY	±4304' NW
RAILROAD	5280' +
PROPERTY LINE	±94' E

NOTE:
1) Bearings shown are Grid Bearings of the Colorado State Plane Coordinate System, North Zone, North American Datum 1983. The lineal dimensions as contained herein are based upon the "U.S. Survey Foot."
2) Distances to section lines measured at 90 degrees from said section lines.
3) Ground elevations are based on an observed GPS elevation (NAVD 1988 DATUM).
4) Latitude and Longitude shown are (NAD 83 DATUM).
5) IMPROVEMENTS: See LOCATION DRAWING for all visible improvements within 500' of oil and gas location.
6) This map does not represent a boundary survey.

- LEGEND
- = ALIQUOT MONUMENT AS DESCRIBED
 - = CALCULATED POSITION
 - = SURFACE HOLE LOCATION (SHL)
 - ▲ = ENTRY POINT LOCATION (EP)
 - BH = BOTTOM HOLE LOCATION (BHL)
 - ⊙ = EXISTING WELL
 - ⊙ = ABANDONED WELL



SHEET 1 OF 3
Kyle E. Rutz—On behalf of Lat40, Inc.
Colorado Licensed Professional Land Surveyor No. 38307
DATE: 8/4/2015
PROJECT#: 2015083

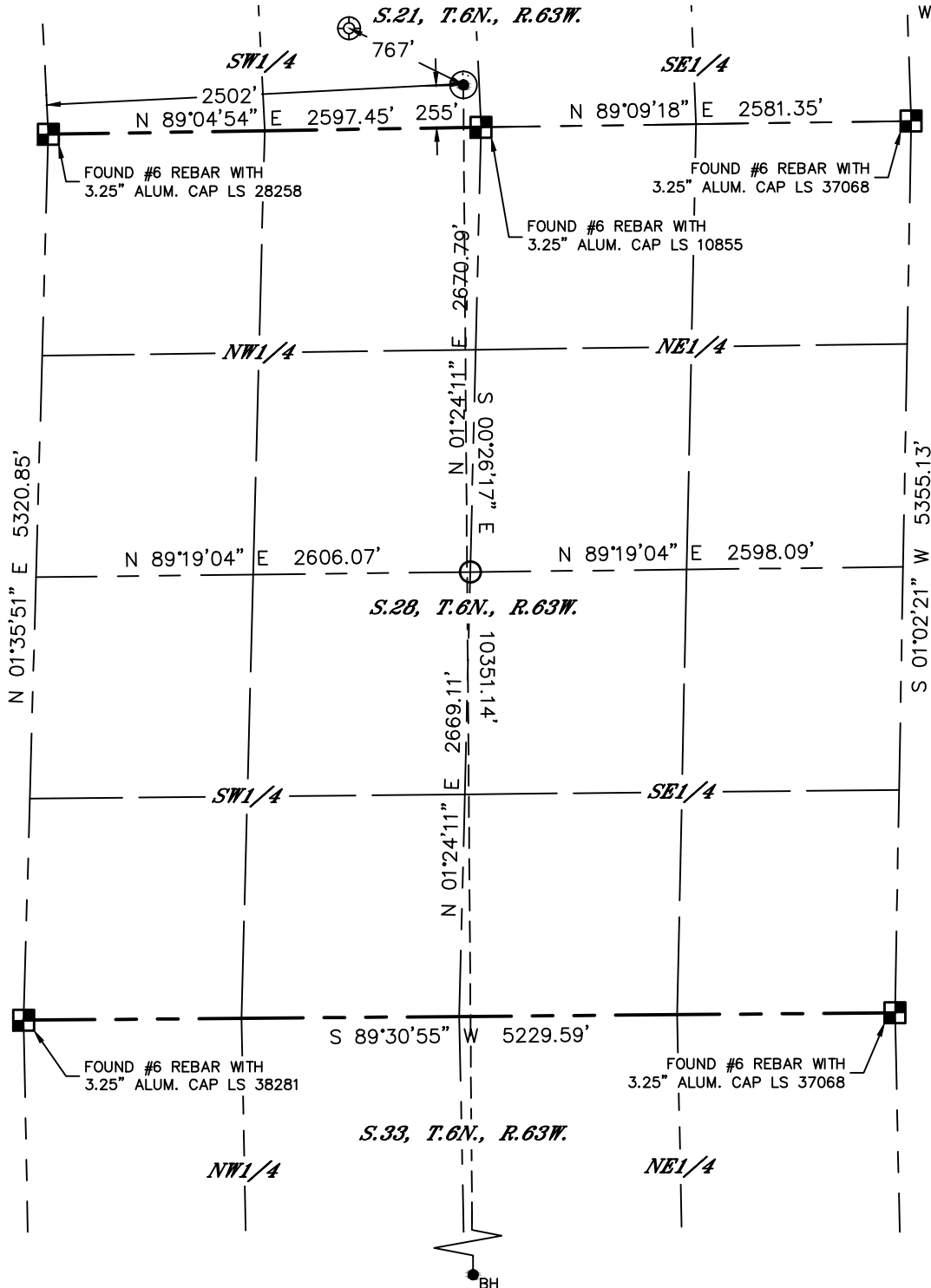


Lat40°, Inc. 6250 W. 10th Street, Unit 2, Greeley, CO 970-515-5294

WELL LOCATION CERTIFICATE

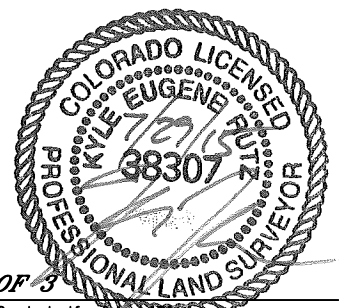
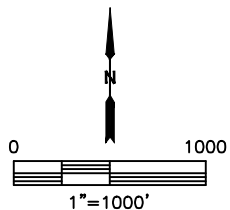
WELLS RANCH STATE AA33-750

SECTION: 21
TOWNSHIP: 6N
RANGE: 63W
6TH. P.M.
WELD COUNTY, CO



LEGEND

- = ALIQUOT MONUMENT AS DESCRIBED
- = CALCULATED POSITION
- ⊙ = SURFACE HOLE LOCATION (SHL)
- ▲ = ENTRY POINT LOCATION (EP)
- = BOTTOM HOLE LOCATION (BHL)
- ⊕ = EXISTING WELL
- ⊗ = ABANDONED WELL



SHEET 2 OF 3

Kyle E. Rutz—On behalf of Lat40, Inc.
Colorado Licensed Professional Land Surveyor No. 38307
DATE: 8/4/2015
PROJECT#: 2015083

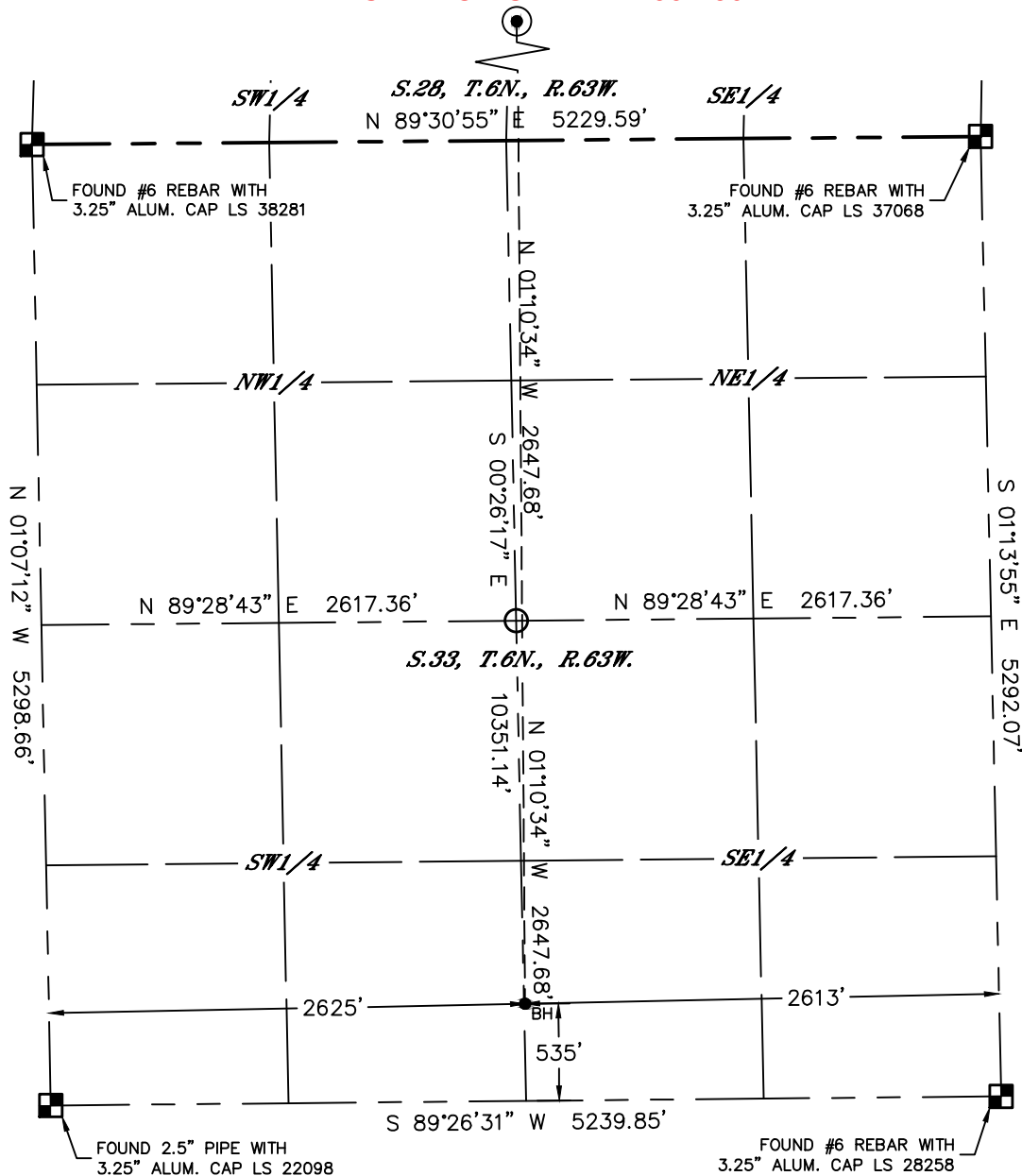


Lat40°, Inc. 6250 W. 10th Street, Unit 2, Greeley, CO 970-515-5294

WELL LOCATION CERTIFICATE

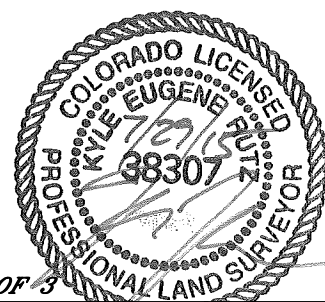
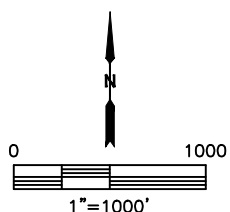
WELLS RANCH STATE AA33-750

SECTION: 21
TOWNSHIP: 6N
RANGE: 63W
6TH. P.M.
WELD COUNTY, CO



LEGEND

- = ALIQUOT MONUMENT AS DESCRIBED
- = CALCULATED POSITION
- ⊙ = SURFACE HOLE LOCATION (SHL)
- ▲ = ENTRY POINT LOCATION (EP)
- = BOTTOM HOLE LOCATION (BHL)
- ⊕ = EXISTING WELL
- ⊖ = ABANDONED WELL



SHEET 3 OF 3

Kyle E. Rutz—On behalf of Lat40°, Inc.
Colorado Licensed Professional Land Surveyor No. 38307
DATE: 7/29/2015
PROJECT#: 2015083