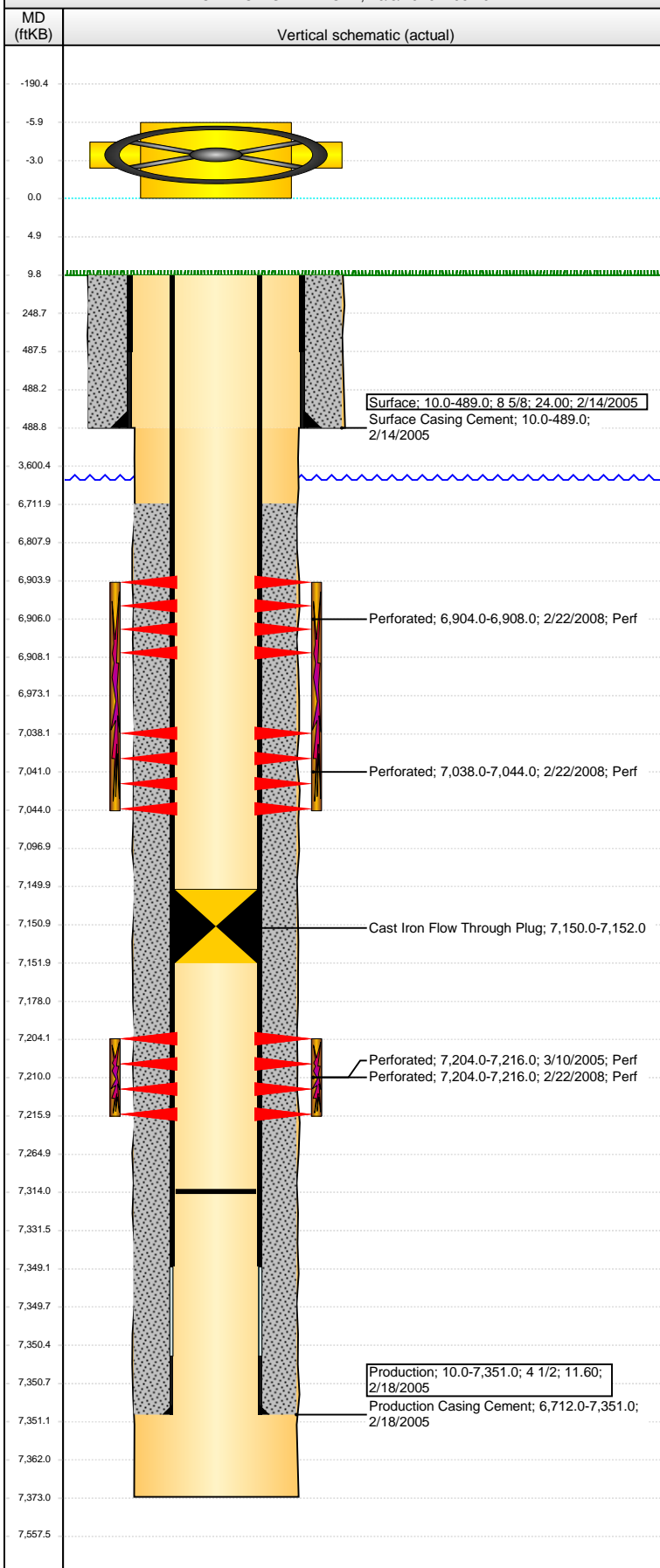


Well Name: BIERIG 08-26

VERTICAL - ORIGINAL HOLE, 10/5/2016 4:05:40 PM



Well Header								
API 05-123-25622		Business Unit DJ BASIN		District 15		Well Config VERTICAL		
Original KB Elevation (ft) 4,763		KB - GL / MSL (ftKB) 10.00		Spud Date 2/14/2005		P & A Date		
Comment WELL FILE MISSING DATA; USED COLTON SCHEMATICS TO VALIDATE; NO TBG DETAIL								
Directions To Well								
Congressional Location								
Quarter 3 SE	Quarter 4 NE	Section 26	Township 5	Twntshp N/S Dir N	Range 66	Range E/W Dir W		
Bottom Hole Location								
North-South Distance (ft)		From N or S Line		East-West Distance (ft)		From E or W Line		
Plug Back Total Depths								
Date	Depth (ftKB)	Method		Com				
4/8/2005	7,267.0	CASED HOLE LOG		DEPTH LOGGER TD ON CBL				
2/21/2008	7,314.0	TAG						
Wellbore Sections								
Section Des		Size (in)		Act Top, MD (ftKB)		Act Btm, MD (ftKB)		
SURFACE		12 1/4		10		489		
PRODUCTION		7 7/8		489		7,373		
Zone Statuses								
Zone Name	Status Date	Status	Fluid Type	Job	Prod Method			
CODELL	3/11/2005	PR	Oil	DRILLING/CO...				
CODELL	3/1/2008	PR	Oil	RE-FRAC & R...				
NIOBRARA	3/1/2008	PR	Oil	RE-FRAC & R...				
Casing Strings								
Surface, 489.0ftKB								
Casing Description		Run Date	OD (in)	Wt/Len (l...	Grade	Top, MD (ft...) MD (ftKB)		
Surface		2/14/2005	8 5/8	24.00		10.0 489.0		
Production, 7,351.0ftKB								
Casing Description		Run Date	OD (in)	Wt/Len (l...	Grade	Top, MD (ft...) MD (ftKB)		
Production		2/18/2005	4 1/2	11.60		10.0 7,351.0		
Cement								
Description				Top Depth (ftKB)		Bottom Depth (ftKB)		
Surface Casing Cement				10.0		489.0		
Description				Top Depth (ftKB)		Bottom Depth (ftKB)		
Production Casing Cement				6,712.0		7,351.0		
Tubing Strings								
Tubing Description		Run Date	String...	ID (in)	Wt (lb/ft)	Grade	Len (ft) Set De...	
Perforation Data								
Zone		Bnch/St g	Entered Shot Total	Top (ftKB)		Btm (ftKB)		Date
NIOBRARA, ORIGINAL HOLE		A	24	6,904.00		6,908.00		2/22/2008
NIOBRARA, ORIGINAL HOLE		B	36	7,038.00		7,044.00		2/22/2008
CODELL, ORIGINAL HOLE				7,204.00		7,216.00		3/10/2005
CODELL, ORIGINAL HOLE			48	7,204.00		7,216.00		2/22/2008
Stimulations & Treatments								
Date	Zone			Primary Job Type				
3/10/2005	CODELL, ORIGINAL HOLE			DRILLING/COMPLETION - ORIGINAL				
Technical Result		Tech Result Details			Tech Result Note			
Comment								
Date	Zone			Primary Job Type				
7/26/2008	CODELL, ORIGINAL HOLE			RE-FRAC & RECOMPLETE				
Technical Result		Tech Result Details			Tech Result Note			
Comment								
Date	Zone			Primary Job Type				
7/26/2008	NIOBRARA, ORIGINAL HOLE			RE-FRAC & RECOMPLETE				
Technical Result		Tech Result Details			Tech Result Note			
Comment								

Well Name: BIERIG 08-26

VERTICAL - ORIGINAL HOLE, 10/5/2016 4:05:43 PM

Other In Hole

Run Date	Des	OD (in)	Top (ftKB)	Btm (ftKB)
	Cast Iron Flow Through Plug	3.99	7,150.0	7,152.0

Logs

Date	Type	Top, MD (ftKB)	Btm, MD (ftKB)
2/18/2005	COMPENSATED DENSITY	3,600.0	7,353.0
4/8/2005	CBL/CCL/GR	6,500.0	7,262.0
2/18/2008	INDUCTION	489.0	7,373.0
4/27/2016	GYRO	0.0	7,100.0

