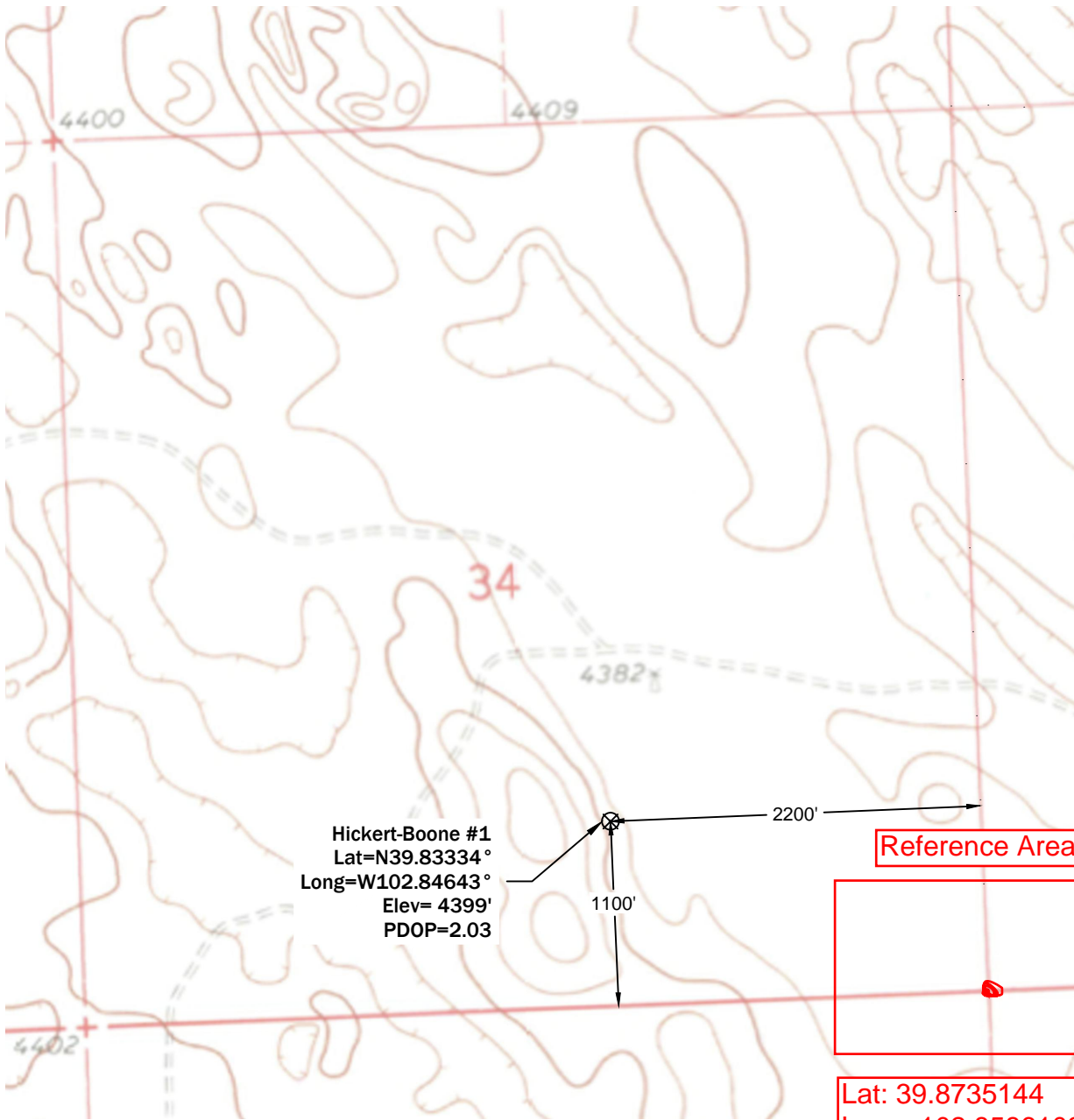


# Topographic Exhibit



**Notes:**

- In accordance with a request from St. Croix Operating, Inc., PLS Group has determined the location of the existing Hickert-Boone #1 well to be 2200' FEL and 1100' FSL as measured perpendicular to the section lines.
- Survey elevations based on NAVD 88 Datum using GPS observed heights and Geoid 2009 corrections.
- Distances shown are in SPC grid feet. Ground scale factor= 1.000224371787.
- There are no improvements within 200' of the proposed well site.
- Apparent Land Use is agricultural.
- Vegetation is pasture grass.
- Topographic map contours and spot elevations based on NGVD 1929 Datum.
- Topographic map dated 1973.

Z:\PLS Group\Project\2016\16067\dwg\16067.dwg July 22, 2016 - 10:31am

Well Name: <b>Hickert-Boone #1</b>	Field Date <b>7-14-2016</b>	Prepared for: <b>Project#: 16067.001</b>
Section 34-T2S-R49W-6th PM, SW-SE	Party Chief <b>ADS</b>	<b>St. Croix Operating, Inc.</b>  PLS Group 6843 North Franklin Avenue Loveland, Colorado 80538 970.669.2100 office - 970.669.3652 fax
Washington County, Colorado	Proj. Manager <b>MBS</b>	
	Drawing Date <b>7-19-2016</b>	