

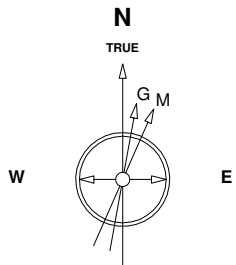
Great Western Operating Company, LLC

Location Colorado
Field Wattenburg
Installation Ocho

Slot Slot W08 - Ocho LD 17-377HC
Well Ocho LD 17-377HC
Wellbore Ocho LD 17-377HC (PWB)

Created by admin
Date plotted 2-Sep-2016

Plot reference is Ocho LD 17-377HC (PWB).
Ref wellpath is Ocho LD 17-377HC (PWP#1).
Coordinates are in Feet reference Slot W08 - Ocho LD 17-377HC.
True Vertical Depths are reference Rig Datum.
Measured Depths are reference Rig Datum.
Rig Datum: Planned Datum #1
Rig Datum to Mean Sea Level: 20.00 ft.
Plot North is aligned to TRUE North.

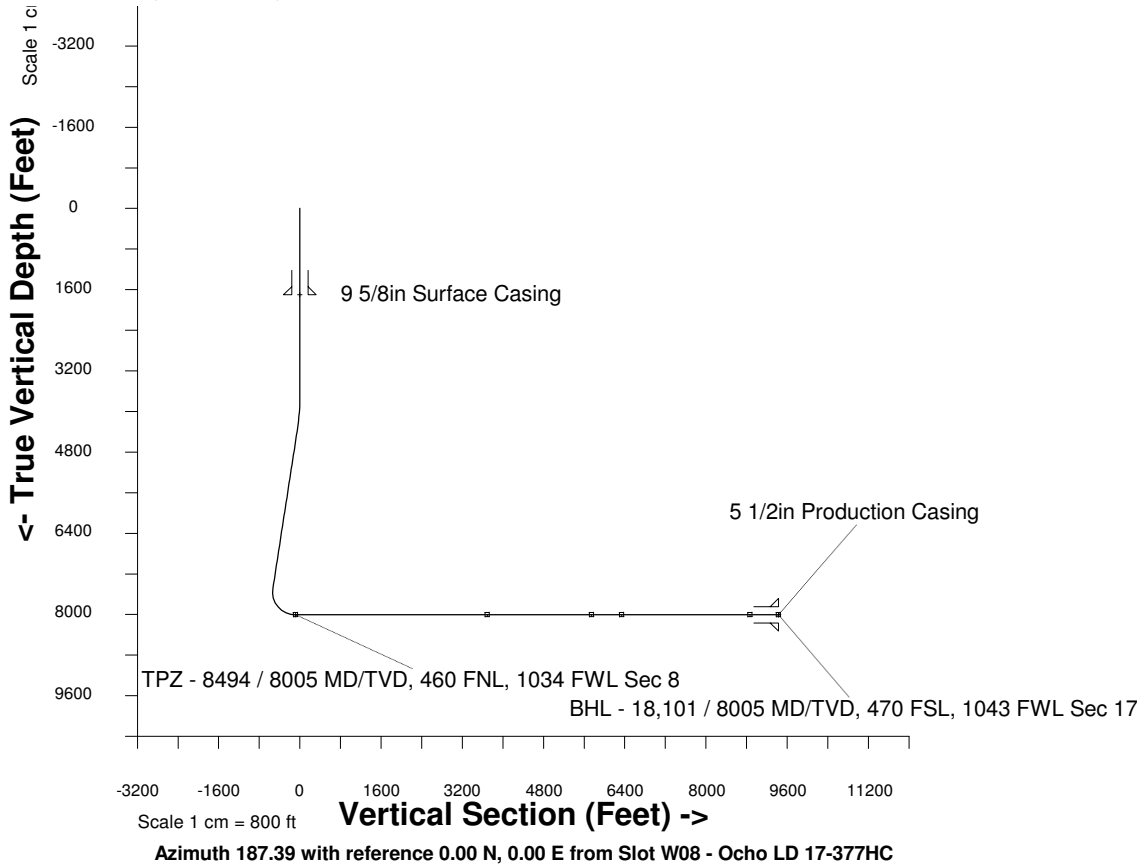


Scale 1 cm = 400 ft

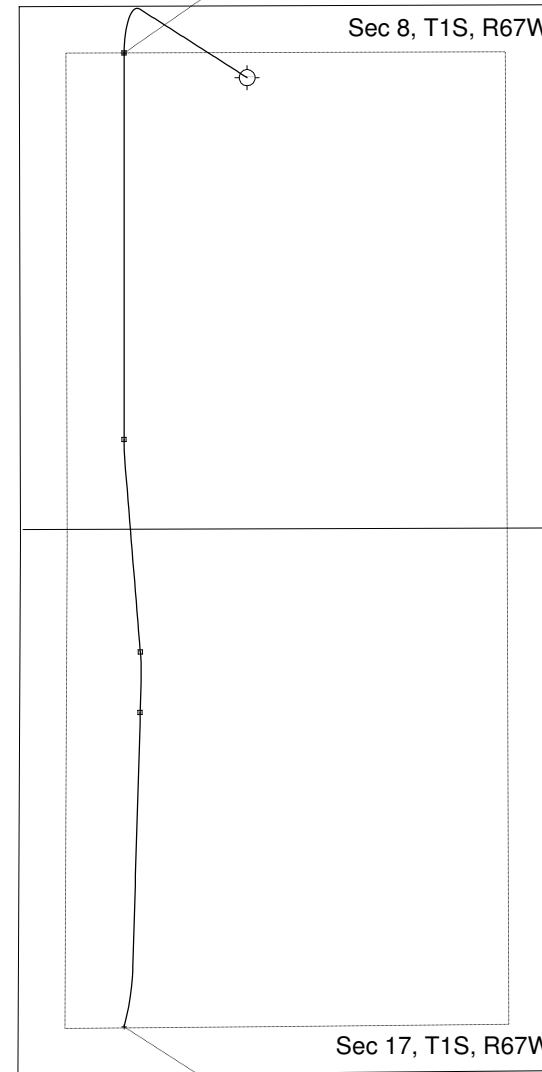
East (Feet) ->

-6400 -5600 -4800 -4000 -3200 -2400 -1600 -800 0 800 1600 2400 3200 4000

31-Aug-2016
IGRF Model [1900.0-2020.0] Dip: 66.52 deg Field: 52289.7 nT
Lat: N39 59 4.9488 Long: W104 54 50.5188 Elev: 0.00 ft
Magnetic North is 8.34 deg East of TRUE North
To correct azimuth from Magnetic to TRUE add 8.34 deg



TPZ - 8494 / 8005 MD/TVD, 460 FNL, 1034 FWL Sec 8



WELL PROFILE DATA

Point	MD	Inc	Azi	TVD	North	East	deg/100ft	V. Sect
Tie on	0.00	0.00	0.00	0.00	S 0.00	W 0.00		-0.00
KOP	3700.00	0.00	302.55	3700.00	S 0.00	W 0.00	0.00	-0.00
End of Build	4363.62	19.91	302.55	4350.34	N 61.40	W 96.21	9.84	-48.52
End of Hold	7720.12	19.91	302.55	7506.26	N 676.28	W 1059.68	0.00	-534.37
Target TPZ - ... Sec 8	8493.62	90.00	180.00	8005.00	N 243.01	W 1211.97	42.65	-85.11
Target KOP	12302.00	90.00	180.00	8005.00	S 3565.37	W 1212.16	0.00	3691.66
End of Turn	12533.45	90.00	175.37	8005.00	S 3796.57	W 1202.83	6.56	3919.74
Target Mcelwain 11-17	14400.29	90.00	175.37	8005.00	S 5657.33	W 1052.26	0.00	5745.68
End of Turn	14714.12	90.00	181.65	8005.00	S 5970.90	W 1044.12	6.56	6055.59
Target Mcelwain 12-17	14997.93	90.00	181.65	8005.00	S 6254.59	W 1052.29	0.00	6337.98
End of Turn	15000.13	90.00	181.69	8005.00	S 6256.78	W 1052.35	6.56	6340.16
Target Mcelwain 2	17538.64	90.00	181.69	8005.00	S 8794.19	W 1127.41	0.00	8866.15
End of Turn	17989.95	90.00	193.43	8005.00	S 9240.79	W 1186.69	8.53	9316.67
T.D. & Target BHL... 17	18100.82	90.00	193.43	8005.00	S 9348.63	W 1212.44	0.00	9426.92