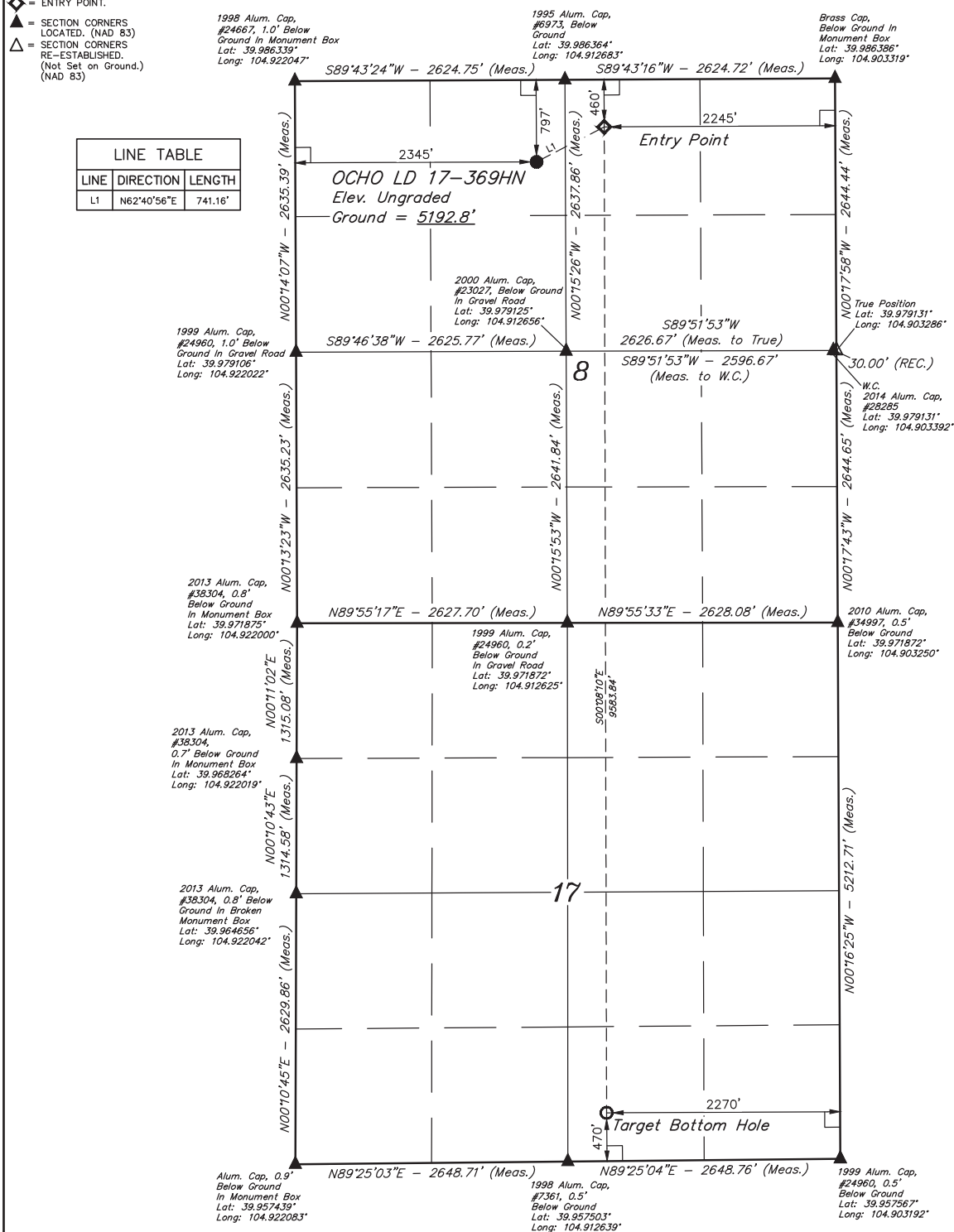


*T1S, R67W, 6th P.M.*

- | LINE TABLE |             |         |
|------------|-------------|---------|
| LINE       | DIRECTION   | LENGTH  |
| L1         | N62°40'56"E | 741.16' |



A horizontal scale bar with alternating black and white segments. It is labeled with '1000'', '500'', and '0'' from left to right.

NAD 83 (SURFACE LOCATION)	NAD 83 (ENTRY POINT)	NAD 83 (TARGET BOTTOM HOLE)
LATITUDE = 39°59'03.22" (39.984172)	LATITUDE = 39°59'06.38" (39.985106)	LATITUDE = 39°57'31.69" (39.958803)
LONGITUDE = 104°54'49.23" (104.913675)	LONGITUDE = 104°54'40.76" (104.911322)	LONGITUDE = 104°54'40.65" (104.911292)
NAD 27 (SURFACE LOCATION)	NAD 27 (ENTRY POINT)	NAD 27 (TARGET BOTTOM HOLE)
LATITUDE = 39°59'03.08" (39.984189)	LATITUDE = 39°59'06.43" (39.985119)	LATITUDE = 39°57'31.74" (39.958817)
LONGITUDE = 104°54'47.31" (104.913142)	LONGITUDE = 104°54'38.85" (104.910792)	LONGITUDE = 104°54'38.74" (104.910761)

### BASIS OF ELEVATION



**UINTAH**  
ENGINEERING & LAND SURVEYING

OCHO LD 17-369HN  
NE 1/4 NW 1/4, SECTION 8, T1S, R67W, 6th P.M.  
ADAMS COUNTY, COLORADO

<b>SURVEYED BY</b>	ZANE BULLARD, G.W.	05-24-16	<b>SCALE</b>
<b>DRAWN BY</b>	K.B.	06-09-16	1" = 1000'

## WELL LOCATION PLAT

**CERTIFICATE**

THIS IS TO CERTIFY THAT THE ABOVE WORK WAS PREPARED FROM THE  
NOTES OF ACTUAL SURVEYS MADE BY ME OR UNDER MY SUPERVISION  
AND THAT THE SAME ARE TRUE AND CORRECT TO THE BEST OF MY  
KNOWLEDGE AND BELIEF.

