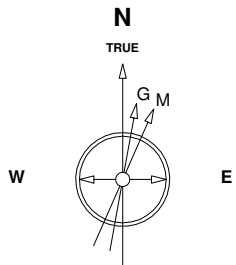


Great Western Operating Company, LLC

Location Colorado
Field Wattenburg
Installation Ocho
Slot Slot E14 - Ocho LD 17-369HN
Well Ocho LD 17-369HN
Wellbore Ocho LD 17-369HN (PWB)

Created by admin
Date plotted 2-Sep-2016

Plot reference is Ocho LD 17-369HN (PWB).
Ref wellpath is Ocho LD 17-369HN (PWP#1).
Coordinates are in Feet reference Slot E14 - Ocho LD 17-369HN.
True Vertical Depths are reference Rig Datum.
Measured Depths are reference Rig Datum.
Rig Datum: Planned Datum #1
Rig Datum to Mean Sea Level: 20.00 ft.
Plot North is aligned to TRUE North.



Scale 1 cm = 400 ft

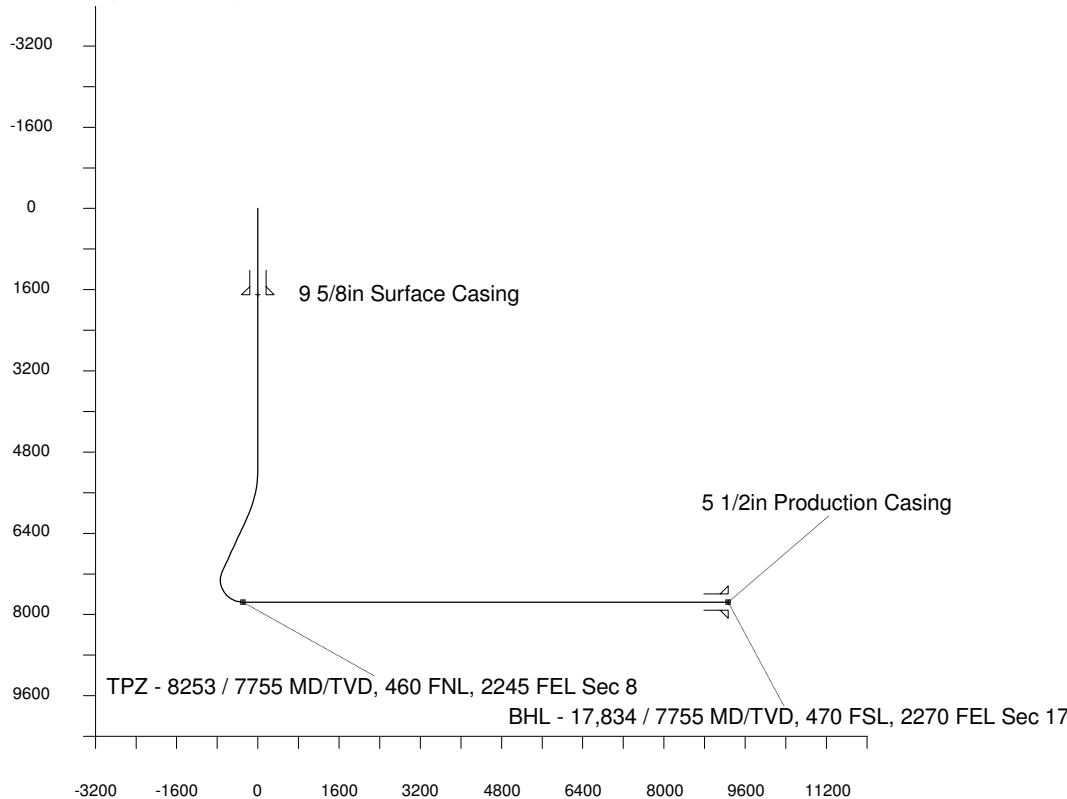
East (Feet) ->

-6400 -5600 -4800 -4000 -3200 -2400 -1600 -800 0 800 1600 2400 3200 4000

31-Aug-2016
IGRF Model [1900.0-2020.0] Dip: 66.52 deg Field: 52289.7 nT
Lat: N39 59 4.9488 Long: W104 54 50.5188 Elev: 0.00 ft
Magnetic North is 8.34 deg East of TRUE North
To correct azimuth from Magnetic to TRUE add 8.34 deg

Scale 1 c

<- True Vertical Depth (Feet)



Scale 1 cm = 800 ft

Vertical Section (Feet) ->

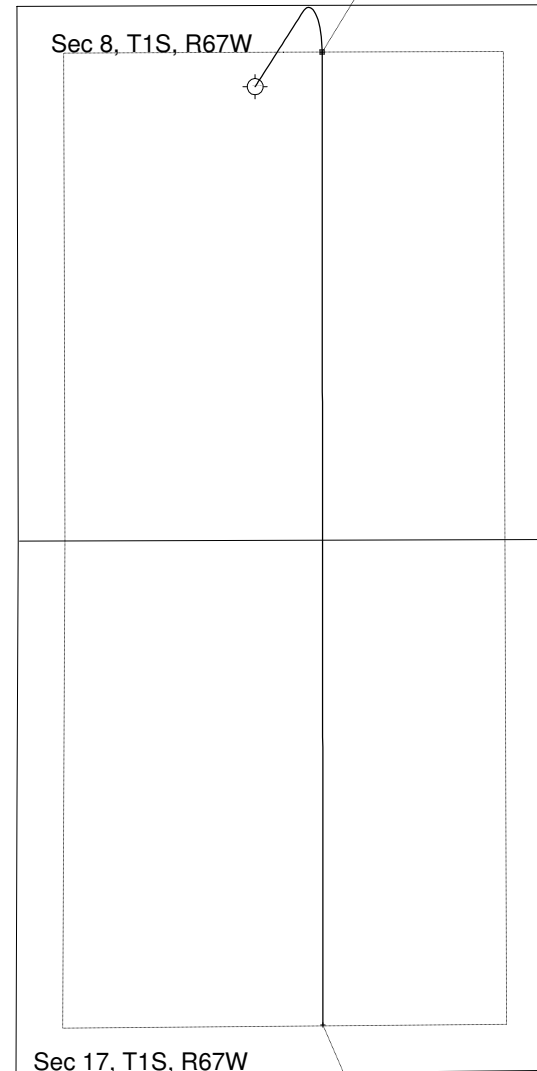
Azimuth 175.87 with reference 0.00 N, 0.00 E from Slot E14 - Ocho LD 17-369HN

WELL PROFILE DATA

Point	MD	Inc	Azi	TVD	North	East	deg/100ft	V. Sect
Tie on	0.00	0.00	0.00	0.00	S 0.00	W 0.00		0.00
KOP	5124.50	0.00	32.58	5124.50	S 0.00	W 0.00	0.00	0.00
End of Build	6124.52	30.00	32.58	6079.45	N 215.61	E 137.79	9.84	-205.12
End of Hold	7368.77	30.00	32.58	7156.99	N 739.84	E 472.82	0.00	-703.83
Target TPZ - ... Sec 8	8252.64	90.00	179.95	7755.00	N 340.25	E 659.37	42.65	-291.83
T.D. & Target BHL... 17	17834.44	90.00	179.95	7755.00	S 9241.55	E 668.03	0.00	9265.66

TPZ - 8253 / 7755 MD/TVD, 460 FNL, 2245 FEL Sec 8

Sec 8, T1S, R67W



Sec 17, T1S, R67W

BHL - 17,834 / 7755 MD/TVD, 470 FSL, 2270 FEL Sec 17

<- North(Feet)

Scale 1 cm = 400 ft