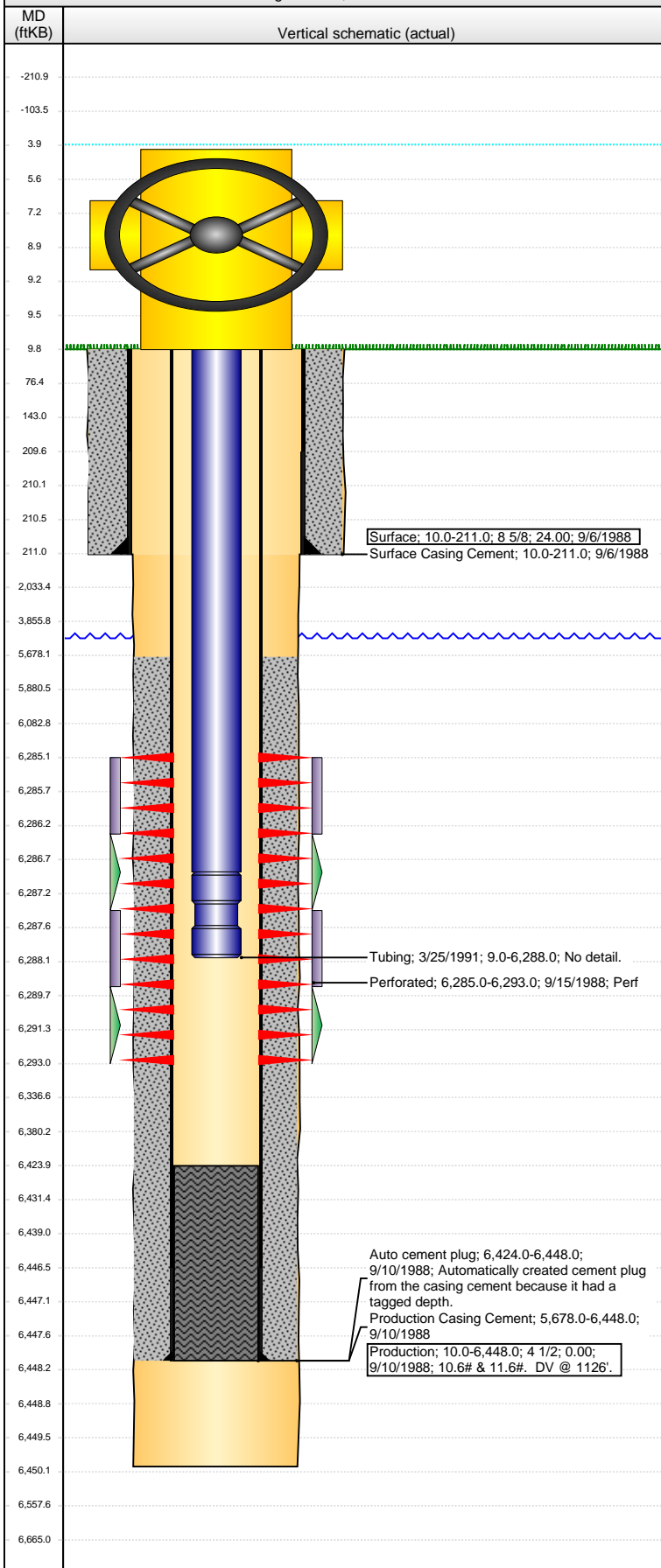


Well Name: LILLI UNIT 08-09

VERTICAL - Original Hole, 10/3/2016 10:10:07 AM



Well Header			
API 05-123-14018	Business Unit DJ BASIN	District 25	Well Config VERTICAL
Original KB Elevation (ft) 4,718	KB - GL / MSL (ftKB) 10.00	Spud Date 9/6/1988	P & A Date
Comment			
Directions To Well			
Congressional Location			
Quarter 3 SE	Quarter 4 NE	Section 9	Township 8 N
Range 58		Range E/W Dir W	
Bottom Hole Location			
North-South Distance (ft)		From N or S Line	East-West Distance (ft)
From E or W Line			
Plug Back Total Depths			
Date	Depth (ftKB)	Method	Com
Wellbore Sections			
Section Des	Size (in)	Act Top, MD (ftKB)	Act Btm, MD (ftKB)
SURFACE	12 1/4	10	211
PRODUCTION	7 7/8	211	6,450
Zone Statuses			
Zone Name	Status Date	Status	Fluid Type
Casing Strings			
Surface, 211.0ftKB			
Casing Description Surface	Run Date 9/6/1988	OD (in) 8 5/8	Wt/Len (l... 24.00
Grade	Top, MD (ft... 10.0	MD (ftKB) 211.0	
Production, 6,448.0ftKB			
Casing Description Production	Run Date 9/10/1988	OD (in) 4 1/2	Wt/Len (l... 24.00
Grade	Top, MD (ft... 10.0	MD (ftKB) 6,448.0	
Cement			
Description Surface Casing Cement	Top Depth (ftKB) 10.0	Bottom Depth (ftKB) 211.0	
Description Production Casing Cement	Top Depth (ftKB) 5,678.0	Bottom Depth (ftKB) 6,448.0	
Tubing Strings			
Tubing Description Tubing	Run Date 3/25/1991	String... 2 3/8	ID (in) 2 3/8
Wt (lb/ft)	Grade	Len (ft) 6,279.00	Set De...
Tubing Components			
Item Des	OD (in)	Wt (lb/ft)	Grade
Jts	Len (ft)	Btm (ftKB)	Btm (TVD) (ftKB)
Tubing	2 3/8		6,277.90
Seating Nipple	2 3/8		1.10
Perforation Data			
Zone	Bnch/St g	Entered Shot Total	Top (ftKB)
D SAND, Original Hole		16	6,285.00
			6,293.00
			9/15/1988
Stimulations & Treatments			
Date 2/14/1997	Zone D SAND, Original Hole	Primary Job Type OTHER	
Technical Result	Tech Result Details		Tech Result Note
Comment See 2/14/97 Service Ticket from Maverick in Denver file.			
Other In Hole			
Run Date	Des	OD (in)	Top (ftKB)
			Btm (ftKB)
Logs			
Date	Type	Top, MD (ftKB)	Btm, MD (ftKB)