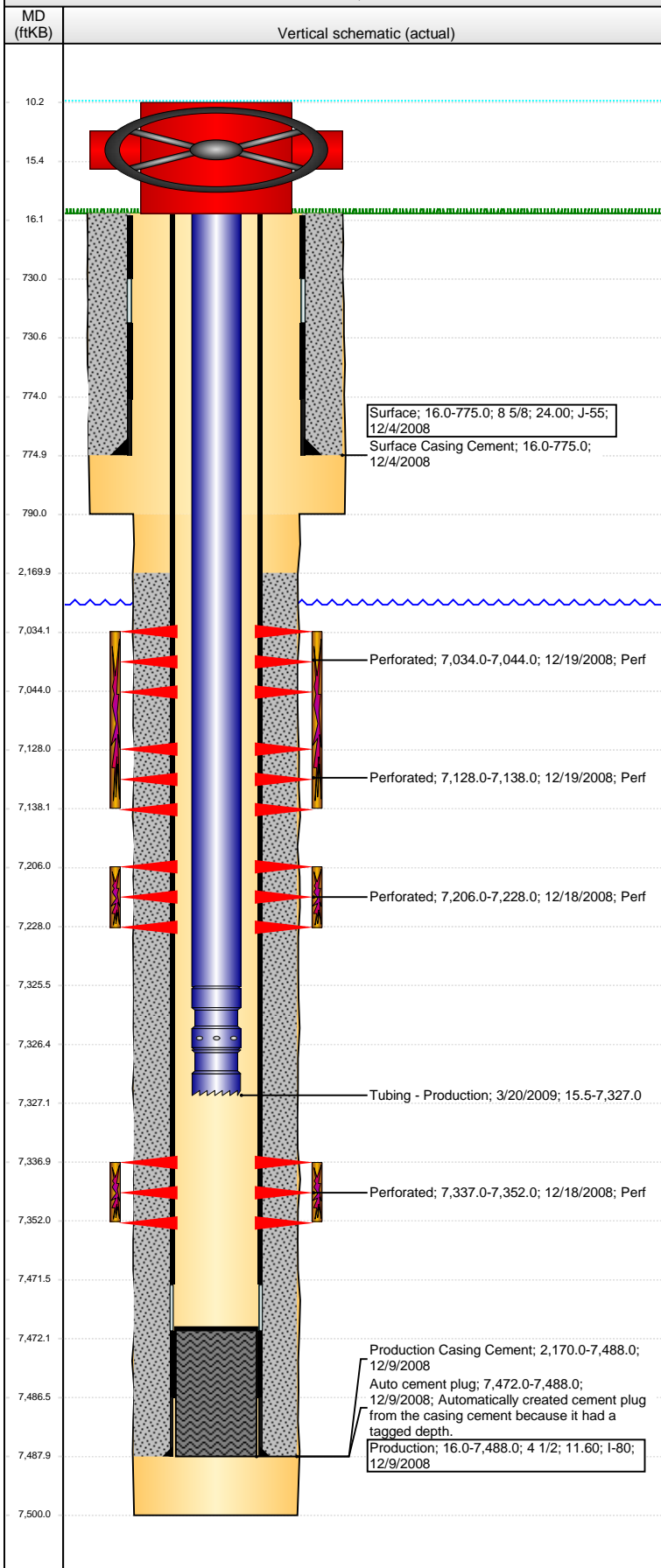


Well Name: FRITZLER 25-22

DEVIATED - ORIGINAL HOLE, 10/5/2016 11:22:56 AM



Well Header								
API 05-123-25842		Business Unit DJ BASIN		District 15	Well Config DEVIATED			
Original KB Elevation (ft) 4,752		KB - GL / MSL (ftKB) 16.00		Spud Date 12/3/2008		P & A Date		
Comment								
Directions To Well HWY 85 & WCR 44, W TO WCR 33, S 2/10, S & W 4/10, S INTO								
Congressional Location								
Quarter 3 SW		Quarter 4 NE	Section 22	Township 4	Twnshp N/S Dir N	Range 66		Range E/W Dir W
Bottom Hole Location								
North-South Distance (ft) 2,356.0		From N or S Line FNL		East-West Distance (ft) 2,405.0		From E or W Line FWL		
Plug Back Total Depths								
Date	Depth (ftKB)	Method		Com				
12/9/2008	7,472.0	CASING TALLY		TOP OF LATCH DOWN BAFFLE				
12/15/2008	7,464.0	CASED HOLE LOG		DEPTH LOGGER ON CBL				
1/14/2009	7,472.0	TAG		CLEAN OUT				
Wellbore Sections								
Section Des		Size (in)		Act Top, MD (ftKB)		Act Btm, MD (ftKB)		
SURFACE		12 1/4		16		790		
PRODUCTION		7 7/8		790		7,500		
Zone Statuses								
Zone Name	Status Date	Status	Fluid Type	Job	Prod Method			
CODELL	2/11/2009	PR		DRILLING/CO...				
NIOBRARA	2/11/2009	PR		DRILLING/CO...				
Casing Strings								
Surface, 775.0ftKB								
Casing Description Surface		Run Date 12/4/2008	OD (in) 8 5/8	Wt/Len (l... 24.00	Grade J-55	Top, MD (ft... 16.0	MD (ftKB) 775.0	
Production, 7,488.0ftKB								
Casing Description Production		Run Date 12/9/2008	OD (in) 4 1/2	Wt/Len (l... 11.60	Grade I-80	Top, MD (ft... 16.0	MD (ftKB) 7,488.0	
Cement								
Description Surface Casing Cement				Top Depth (ftKB) 16.0		Bottom Depth (ftKB) 775.0		
Description Production Casing Cement				Top Depth (ftKB) 2,170.0		Bottom Depth (ftKB) 7,488.0		
Tubing Strings								
Tubing Description Tubing - Production		Run Date 3/20/2009	String... 2 3/8	ID (in) 1.995	Wt (lb/ft) 4.70	Grade J-55	Len (ft) 7,311.49	Set De... 49
Tubing Components								
Item Des		OD (in)	Wt (lb/ft)	Grade	Jts	Len (ft)	Btm (ftKB)	Btm (TVD) (ftKB)
Tubing		2 3/8	4.70	J-55	235	7,309.84	7,325.3	
Seal Nipple		2 3/8				1.15	7,326.5	
Notched collar		2 3/8				0.50	7,327.0	
Perforation Data								
Zone		Bnch/St g	Entered Shot Total	Top (ftKB)		Btm (ftKB)		Date
NIOBRARA, ORIGINAL HOLE		A	30	7,034.00		7,044.00		12/19/2008
NIOBRARA, ORIGINAL HOLE		B	30	7,128.00		7,138.00		12/19/2008
NIOBRARA, ORIGINAL HOLE		C	66	7,206.00		7,228.00		12/18/2008
CODELL, ORIGINAL HOLE			60	7,337.00		7,352.00		12/18/2008
Stimulations & Treatments								
Date 12/19/2008		Zone CODELL, ORIGINAL HOLE			Primary Job Type DRILLING/COMPLETION - ORIGINAL			
Technical Result			Tech Result Details			Tech Result Note		
Comment								
Date 12/19/2008		Zone NIOBRARA, ORIGINAL HOLE			Primary Job Type DRILLING/COMPLETION - ORIGINAL			
Technical Result			Tech Result Details			Tech Result Note		
Comment								
A & B BENCH FRAC								

Well Name: FRITZLER 25-22

DEVIATED - ORIGINAL HOLE, 10/5/2016 11:22:59 AM

Stimulations & Treatments

Date 12/19/2008	Zone NIOBRARA, ORIGINAL HOLE	Primary Job Type DRILLING/COMPLETION - ORIGINAL
Technical Result	Tech Result Details	Tech Result Note

Comment
C BENCH FRAC

Other In Hole

Run Date	Des	OD (in)	Top (ftKB)	Btm (ftKB)

Logs

Date	Type	Top, MD (ftKB)	Btm, MD (ftKB)
12/9/2008	COMPENSATED DENSITY	2,490.0	7,485.0
12/9/2008	INDUCTION	775.0	7,505.0
12/15/2008	CBL/CCL/GR	1,950.0	7,462.0
12/19/2008	COLLAR LOCATOR	6,920.0	7,020.0

