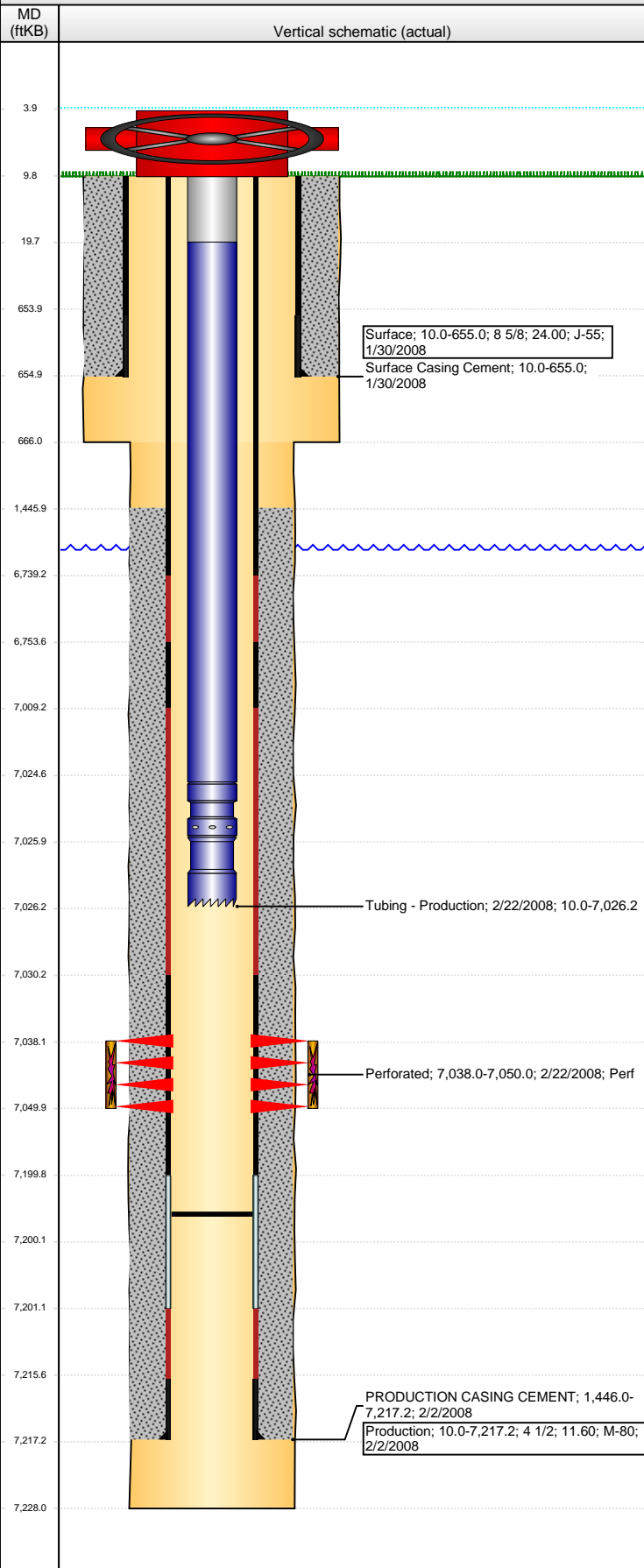


**Well Name: MCWILLIAMS D30-21**

VERTICAL - ORIGINAL HOLE, 10/5/2016 9:48:15 AM



## Well Header

API 05-123-25394	Business Unit DJ BASIN	District 15	Well Config VERTICAL
Original KB Elevation (ft) 4,804	KB - GL / MSL (ftKB) 10.00	Spud Date 1/29/2008	P & A Date

## Comment

318Ae LOCATION

LITTLE DETAIL TO VERIFY AGAINST; TBG

## Directions To Well

Starting from the intersection of CR 49 and CR 30, head south .5 miles on CR 49. Turn east on existing road, traveling .5 miles east to the center of section 30. From there travel southeast a couple hundred feet to the wellsite.

## Congressional Location

Quarter 3 NW	Quarter 4 SE	Section 30	Township 3	Twnshp N/S Dir N	Range 64	Range E/W Dir W
-----------------	-----------------	---------------	---------------	---------------------	-------------	--------------------

## Bottom Hole Location

North-South Distance (ft)	From N or S Line	East-West Distance (ft)	From E or W Line
---------------------------	------------------	-------------------------	------------------

## Plug Back Total Depths

Date	Depth (ftKB)	Method	Com
2/2/2008	7,200.0	CASING TALLY	

## Wellbore Sections

Section Des	Size (in)	Act Top, MD (ftKB)	Act Btm, MD (ftKB)
SURFACE	12 1/4	10	666
PRODUCTION	7 7/8	666	7,228

## Zone Statuses

Zone Name	Status Date	Status	Fluid Type	Job	Prod Method
CODELL	4/3/2008	PR		DRILLING/CO...	

## Casing Strings

### Surface, 655.0ftKB

Casing Description	Run Date	OD (in)	Wt/Len (l...)	Grade	Top, MD (ft...)	MD (ftKB)
Surface	1/30/2008	8 5/8	24.00	J-55	10.0	655.0

### Production, 7,217.2ftKB

Casing Description	Run Date	OD (in)	Wt/Len (l...)	Grade	Top, MD (ft...)	MD (ftKB)
Production	2/2/2008	4 1/2	11.60	M-80	10.0	7,217.2

## Cement

Description	Top Depth (ftKB)	Bottom Depth (ftKB)
Surface Casing Cement	10.0	655.0
PRODUCTION CASING CEMENT	1,446.0	7,217.2

## Tubing Strings

Tubing Description	Run Date	String...	ID (in)	Wt (lb/ft)	Grade	Len (ft)	Set De...
Tubing - Production	2/22/2008	2 3/8	1.995	4.70	J-55	7,016.24	7,026.00

## Tubing Components

Item Des	OD (in)	Wt (lb/ft)	Grade	Jts	Len (ft)	Btm (ftKB)	Btm (TVD) (ftKB)
Tubing Pup Joint	2 3/8			1	9.71	19.7	
Tubing	2 3/8	4.70	J-55	225	7,005.03	7,024.7	
Pump Seating	2 3/8			1	1.10	7,025.8	7,025.6
Nipple							
Notched collar	2 3/8				0.40	7,026.2	7,026.0

## Perforation Data

Zone	Bnch/St g	Entered Shot Total	Top (ftKB)	Btm (ftKB)	Date
CODELL, ORIGINAL HOLE	01	48	7,038.00	7,050.00	2/22/2008

## Stimulations & Treatments

Date	Zone	Primary Job Type
2/28/2008	CODELL, ORIGINAL HOLE	DRILLING/COMPLETION - ORIGINAL
Technical Result	Tech Result Details	Tech Result Note
Success	According to Plan	
Comment (CODELL)		

## Other In Hole

Run Date	Des	OD (in)	Top (ftKB)	Btm (ftKB)

## Logs

Date	Type	Top, MD (ftKB)	Btm, MD (ftKB)
2/2/2008	Compensated Density/Microlog	2,800.0	7,207.0

**Well Name: MCWILLIAMS D30-21**

VERTICAL - ORIGINAL HOLE, 10/5/2016 9:48:17 AM

## Logs

Date	Type	Top, MD (ftKB)	Btm, MD (ftKB)
2/2/2008	Gamma Ray/ Dual Ind	653.0	7,227.0
2/13/2008	CBL/CCL/GR	1,350.0	7,164.0

