

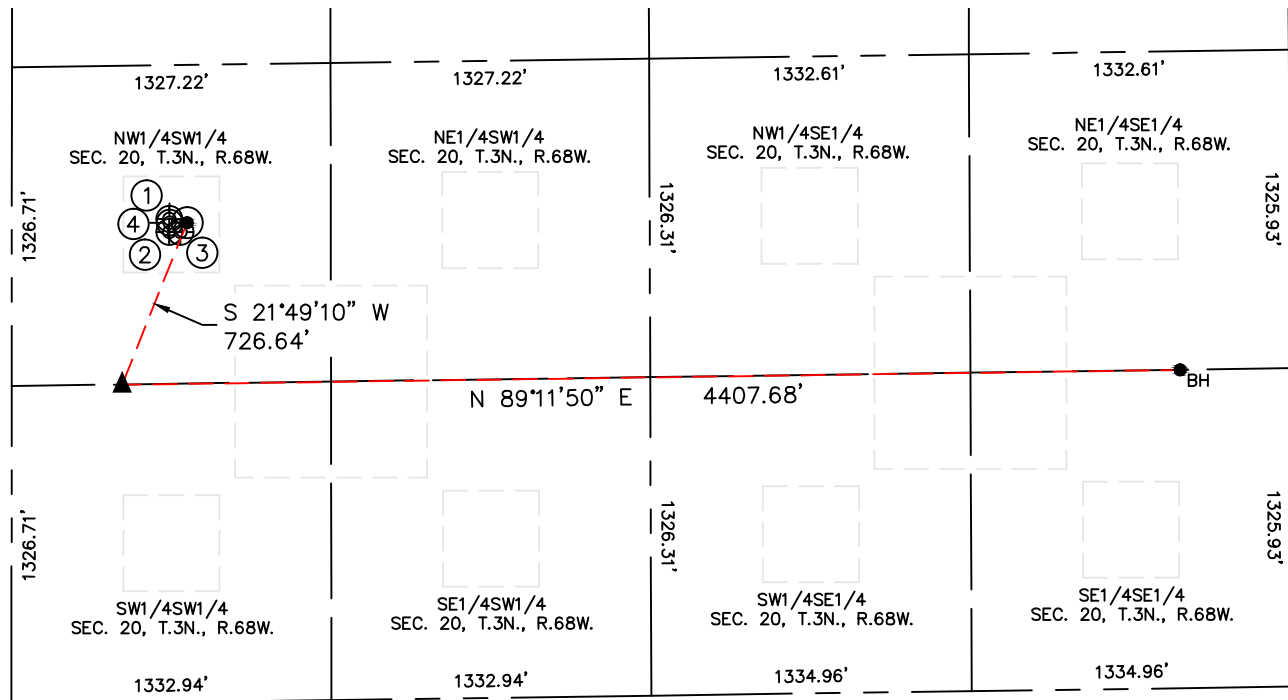


Lat40°, Inc. 6250 W. 10th Street, Unit 2, Greeley, CO 970-515-5294

# SITE SKETCH

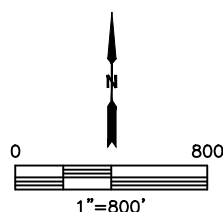
HALEY 6HZ

SECTION: 20  
TOWNSHIP: 3N  
RANGE: 68W  
6TH. P.M.  
WELD COUNTY, CO



| WELL NO. | WELL NAME | SHL FOOTAGE |     |     |     | SHL LAT° | SHL LONG°  | PDOP | ELEV (FT.) | 1/4/1/4 |
|----------|-----------|-------------|-----|-----|-----|----------|------------|------|------------|---------|
| 1        | HALEY 10  | 2013        | FSL | 656 | FWL | 40.20938 | -105.03401 | 1.4  | 5079       | NWSW    |
| 2        | HALEY 2   | 1958        | FSL | 656 | FWL | 40.20922 | -105.03401 | 2.6  | 5078       | NWSW    |
| 3        | HALEY 3   | 1957        | FSL | 702 | FWL | 40.20922 | -105.03385 | 1.9  | 5078       | NWSW    |
| 4        | HALEY 1   | 1997        | FSL | 657 | FWL | 40.20933 | -105.03401 | 2.6  | 5079       | NWSW    |

NOTE: THE HALEY 1 HAS BEEN PLUGGED & ABANDONED.



DATE: 9/16/2016  
PROJECT#: 2015154