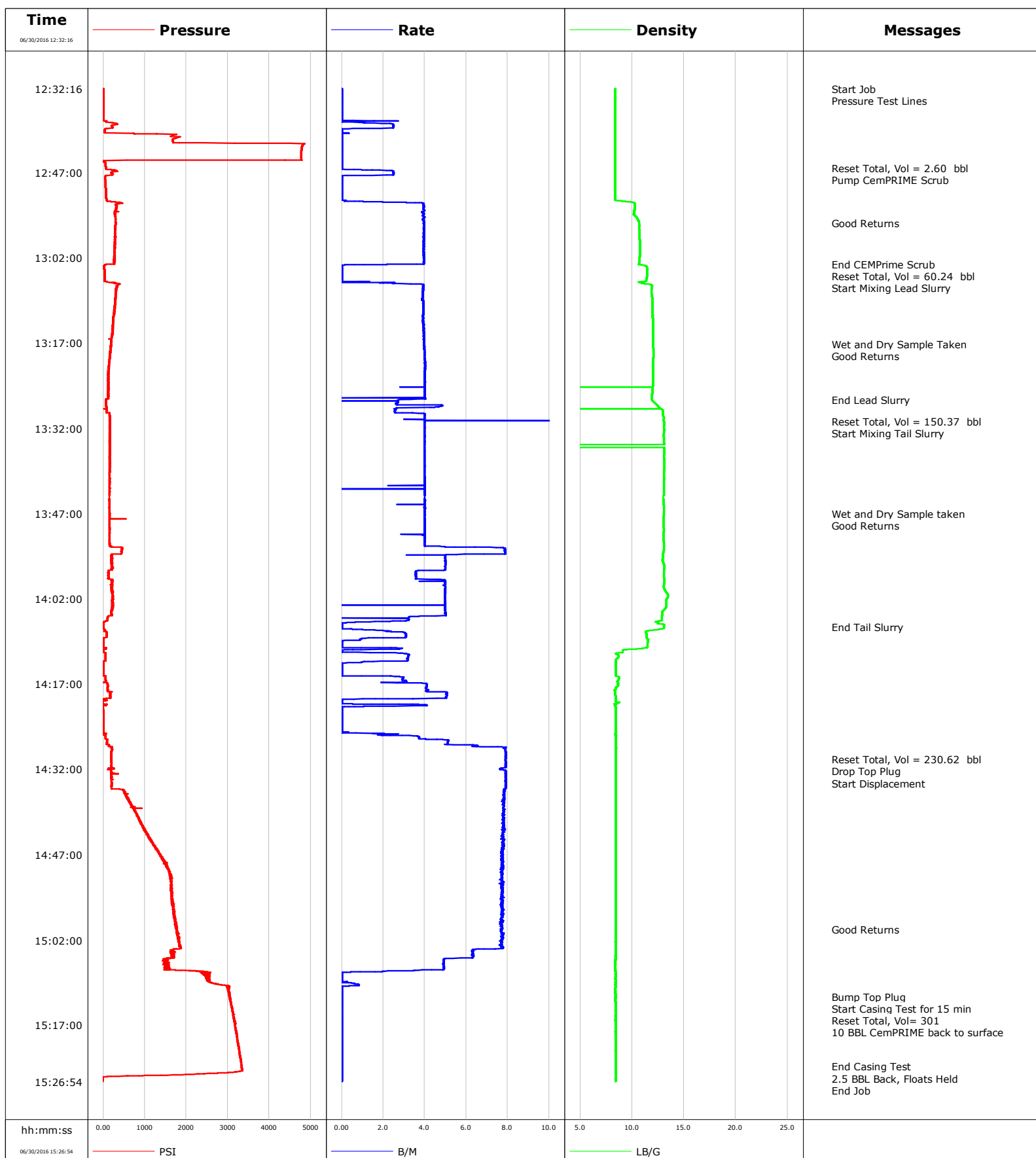


Well Land Fed
Field Wattenberg
Engineer Glenn Mendez
Country United States

Client Anadarko
SIR No. CWJN-01768
Job Type Monobore Production
Job Date 06-30-2016



					Customer Anadarko			Job Number CWJN-01768									
Well Land Fed 35C-32HZ				Location (legal) 2173			Schlumberger Location Jeff Eulberg			Job Start Jun/30/2016							
Field Wattenberg			Formation Name/Type Shale			Deviation 0 deg		Bit Size 7.9 in		Well MD 13074.0 ft		Well TVD 7500.5 ft					
County Weld			State/Province Colorado			BHP 2800 psi		BHST 231 degF		BHCT 231 degF		Pore Press. Gradient lb/gal					
Well Master 0631662943			API/UWI														
Rig Name Precision 461		Drilled For Oil & Gas		Service Via Land		Casing/ Liner											
						Depth, ft		Size, in		Weight, lb/ft		Grade		Thread			
Offshore Zone		Well Class New		Well Type Development		13074.0		5.5		17.0		P110		N/A			
						0.0		0.0		0.0							
Drilling Fluid Type LT OBM			Max. Density 9.80 lb/gal		Plastic Viscosity cP		Tubing/Drill Pipe										
						T/D		Depth, ft		Size, in		Weight, lb/ft		Grade		Thread	
Service Line Cementing		Job Type Monobore Production															
Max. Allowed Tub. Press psi		Max. Allowed Ann. Press psi		WH Connection		Perforations/Open Hole											
						Top, ft		Bottom, ft		shot/ft		No. of Shots		Total Interval			
						ft		ft						ft			
						ft		ft						Diameter		in	
						ft		ft									
						Treat Down Casing		Displacement 301.0 bbl		Packer Type		Packer Depth ft					
						Tubing Vol. bbl		Casing Vol. 303.8 bbl		Annular Vol. 90.8 bbl		Openhole Vol. 345.0 bbl					
Casing/Tubing Secured <input checked="" type="checkbox"/>		1 Hole Vol. Circulated prior to Cement <input checked="" type="checkbox"/>				Casing Tools				Squeeze Job							
Lift Pressure 2800 psi						Shoe Type Float				Squeeze Type							
Pipe Rotated <input type="checkbox"/>		Pipe Reciprocated <input type="checkbox"/>				Shoe Depth 13074.0 ft				Tool Type							
No. Centralizers		Top Plugs 1		Bottom Plugs 1		Stage Tool Type				Tool Depth ft							
Cement Head Type Double						Stage Tool Depth ft				Tail Pipe Size in							
Job Scheduled For Jun/30/2016		Arrived on Location Jun/30/2016		Leave Location Jun/30/2016		Collar Type Float				Tail Pipe Depth ft							
						Collar Depth 12981.0 ft				Sqz. Total Vol. bbl							
Date	Time 24-hr clock	Treating Pressure PSI	Flow Rate B/M	Density LB/G	Volume BBL	Solid Fraction NULL	Message										
06/30/2016	12:32:16	9	0.0	8.40	0.0	0	Started Acquisition										
06/30/2016	12:32:18	9	0.0	8.40	0.0	0	Start Job										
06/30/2016	12:32:22	9	0.0	8.40	0.0	0	Pressure Test Lines										
06/30/2016	12:33:16	9	0.0	8.40	0.0	0											
06/30/2016	12:34:16	8	0.0	8.40	0.0	0											
06/30/2016	12:35:16	6	0.0	8.40	0.0	0											
06/30/2016	12:36:16	7	0.0	8.40	0.0	0											
06/30/2016	12:37:16	7	0.0	8.40	0.0	0											
06/30/2016	12:38:16	227	1.1	8.40	0.1	0											
06/30/2016	12:39:16	109	0.5	8.39	2.5	0											
06/30/2016	12:40:16	1287	0.0	8.39	2.6	0											
06/30/2016	12:41:16	1669	0.0	8.39	2.6	0											
06/30/2016	12:42:16	4798	0.0	8.39	2.6	0											
06/30/2016	12:43:16	4772	0.0	8.39	2.6	0											
06/30/2016	12:44:16	4771	0.0	8.39	2.6	0											
06/30/2016	12:45:16	49	0.0	8.39	2.6	0											
06/30/2016	12:46:16	63	0.0	8.39	2.6	0											
06/30/2016	12:46:17	64	0.0	8.39	2.6	0	Reset Total, Vol = 2.60 bbl										
06/30/2016	12:46:26	66	0.0	8.39	2.6	0	Pump CemPRIME Scrub										
06/30/2016	12:47:16	236	2.5	8.39	4.4	0											
06/30/2016	12:48:16	47	0.0	8.39	5.1	0											

Well			Field		Job Start		Customer		Job Number	
Land Fed 35C-32HZ			Wattenberg		Jun/30/2016		Anadarko		CWJN-01768	
Date	Time 24-hr clock	Treating Pressure PSI	Flow Rate B/M	Density LB/G	Volume BBL	Solid Fraction NULL	Message			
06/30/2016	12:50:16	64	0.0	8.39	5.1	0				
06/30/2016	12:51:16	70	0.0	8.39	5.1	0				
06/30/2016	12:52:16	293	2.5	10.05	5.3	21				
06/30/2016	12:53:16	310	4.0	10.23	9.3	20				
06/30/2016	12:54:16	294	6.5	10.18	14.2	18				
06/30/2016	12:55:16	292	6.6	10.54	20.8	19				
06/30/2016	12:55:58	292	6.5	10.68	25.4	19	Good Returns			
06/30/2016	12:56:16	295	6.5	10.70	27.3	19				
06/30/2016	12:57:16	282	6.6	10.72	33.9	19				
06/30/2016	12:58:16	280	6.5	10.72	40.4	20				
06/30/2016	12:59:16	290	6.5	10.77	47.0	22				
06/30/2016	13:00:16	274	6.6	10.77	53.5	23				
06/30/2016	13:01:16	270	6.6	10.76	60.1	24				
06/30/2016	13:02:16	264	6.5	10.72	66.6	25				
06/30/2016	13:03:08	272	6.6	10.67	72.3	38	End CEMPrime Scrub			
06/30/2016	13:03:09	258	6.6	10.66	72.4	38	Reset Total, Vol = 60.24 bbl			
06/30/2016	13:03:16	42	0.6	10.87	72.9	0				
06/30/2016	13:04:16	25	0.0	11.46	72.9	0				
06/30/2016	13:05:16	27	0.0	11.43	72.9	0				
06/30/2016	13:06:16	95	0.0	10.79	72.9	1				
06/30/2016	13:06:55	332	4.0	11.92	74.7	6	Start Mixing Lead Slurry			
06/30/2016	13:07:16	334	6.6	11.92	76.6	8				
06/30/2016	13:08:16	300	6.5	11.88	83.2	14				
06/30/2016	13:09:16	300	6.6	11.95	89.7	17				
06/30/2016	13:10:16	290	7.9	11.98	97.6	20				
06/30/2016	13:11:16	272	7.9	11.98	105.6	21				
06/30/2016	13:12:16	249	8.0	11.99	113.6	22				
06/30/2016	13:13:16	230	7.9	12.01	121.7	24				
06/30/2016	13:14:16	231	8.0	12.01	129.7	24				
06/30/2016	13:15:16	236	8.2	12.02	137.7	25				
06/30/2016	13:16:16	201	8.0	12.01	145.7	25				
06/30/2016	13:17:09	191	8.0	12.01	152.8	25	Wet and Dry Sample Taken			
06/30/2016	13:17:16	186	8.0	12.01	153.8	25				
06/30/2016	13:18:16	171	8.0	12.04	161.8	26				
06/30/2016	13:19:16	159	8.0	12.04	169.8	26				
06/30/2016	13:20:16	146	8.0	12.02	177.9	26				
06/30/2016	13:21:16	137	7.9	12.02	185.9	26				
06/30/2016	13:22:16	123	8.0	12.01	193.9	26				
06/30/2016	13:23:16	122	8.0	12.00	202.0	26				
06/30/2016	13:24:16	116	7.9	11.99	210.0	26				
06/30/2016	13:25:16	123	8.0	11.98	221.4	27				
06/30/2016	13:26:16	115	7.9	11.94	229.5	27				
06/30/2016	13:26:57	69	5.2	11.93	234.5	27	End Lead Slurry			
06/30/2016	13:27:16	68	5.1	11.99	236.1	29				
06/30/2016	13:28:16	71	3.5	12.55	239.9	1504				
06/30/2016	13:29:16	76	3.5	12.95	247.4	36				
06/30/2016	13:30:16	163	5.0	13.05	252.4	36				
06/30/2016	13:30:49	162	6.6	13.06	255.4	36	Reset Total, Vol = 150.37 bbl			
06/30/2016	13:30:50	160	6.6	13.06	255.5	36	Start Mixing Tail Slurry			
06/30/2016	13:31:16	155	6.5	13.12	258.3	36				
06/30/2016	13:32:16	154	6.5	13.10	264.9	36				
06/30/2016	13:33:16	156	6.5	13.03	271.4	35				
06/30/2016	13:34:16	160	8.0	13.08	279.1	36				
06/30/2016	13:35:16	161	8.0	13.09	287.2	36				

Well			Field		Job Start		Customer		Job Number	
Land Fed 35C-32HZ			Wattenberg		Jun/30/2016		Anadarko		CWJN-01768	
Date	Time 24-hr clock	Treating Pressure PSI	Flow Rate B/M	Density LB/G	Volume BBL	Solid Fraction NULL	Message			
06/30/2016	13:37:16	151	8.0	13.09	303.2	36				
06/30/2016	13:38:16	161	8.0	13.10	311.3	36				
06/30/2016	13:39:16	158	8.0	13.09	319.3	36				
06/30/2016	13:40:16	155	7.9	13.06	327.3	36				
06/30/2016	13:41:16	154	8.0	13.08	335.3	36				
06/30/2016	13:42:16	149	7.9	13.08	348.8	36				
06/30/2016	13:43:16	156	8.0	13.06	356.8	36				
06/30/2016	13:45:16	149	7.9	13.03	372.9	36				
06/30/2016	13:46:16	155	8.0	13.08	386.8	36				
06/30/2016	13:47:01	156	8.0	13.08	392.8	36	Wet and Dry Sample taken			
06/30/2016	13:47:02	154	8.0	13.07	393.0	36	Good Returns			
06/30/2016	13:47:16	152	8.0	13.06	394.9	36				
06/30/2016	13:48:16	150	8.0	13.02	402.9	36				
06/30/2016	13:49:16	147	8.0	13.03	410.9	35				
06/30/2016	13:50:16	155	8.0	13.04	418.9	35				
06/30/2016	13:51:16	155	8.0	13.02	433.6	35				
06/30/2016	13:52:16	150	8.0	13.06	441.6	35				
06/30/2016	13:53:16	458	8.0	13.07	449.0	35				
06/30/2016	13:54:16	209	4.9	12.96	456.7	35				
06/30/2016	13:55:16	194	4.9	12.94	461.7	35				
06/30/2016	13:56:16	236	5.0	13.11	466.7	36				
06/30/2016	13:57:16	122	3.6	13.04	471.3	34				
06/30/2016	13:58:16	124	3.6	13.09	474.9	34				
06/30/2016	13:59:16	202	5.0	13.10	486.9	34				
06/30/2016	14:00:16	188	5.0	13.10	492.0	35				
06/30/2016	14:01:16	224	5.0	13.45	497.0	37				
06/30/2016	14:02:16	206	5.0	13.30	502.0	36				
06/30/2016	14:03:16	213	5.0	13.30	507.0	36				
06/30/2016	14:04:16	185	5.0	12.91	512.0	34				
06/30/2016	14:05:16	106	3.2	12.88	516.6	34				
06/30/2016	14:06:16	9	0.1	12.49	527.1	0				
06/30/2016	14:06:57	5	0.0	13.05	527.1	0	End Tail Slurry			
06/30/2016	14:07:16	11	0.0	12.98	527.1	42				
06/30/2016	14:08:16	76	3.1	11.37	529.3	38				
06/30/2016	14:09:16	11	0.9	11.56	531.5	44				
06/30/2016	14:10:16	5	0.0	11.48	531.6	0				
06/30/2016	14:11:16	6	0.0	9.10	532.5	0				
06/30/2016	14:12:16	57	3.2	8.69	535.0	44				
06/30/2016	14:13:16	0	0.3	8.44	537.6	0				
06/30/2016	14:14:16	7	0.0	8.43	537.6	0				
06/30/2016	14:15:16	8	0.0	8.42	537.6	0				
06/30/2016	14:16:16	56	2.9	8.69	539.5	2				
06/30/2016	14:17:16	109	4.1	8.64	542.9	41				
06/30/2016	14:18:16	107	4.1	8.38	547.0	22				
06/30/2016	14:19:16	168	5.0	8.41	552.0	38				
06/30/2016	14:20:16	-18	0.0	8.74	553.7	0				
06/30/2016	14:21:16	-4	0.0	8.42	555.1	0				
06/30/2016	14:22:16	4	0.0	8.41	555.1	0				
06/30/2016	14:23:16	4	0.0	8.41	555.1	0				
06/30/2016	14:24:16	5	0.0	8.41	555.1	0				
06/30/2016	14:25:16	5	0.0	8.41	555.1	0				
06/30/2016	14:26:16	55	3.7	8.43	556.6	0				
06/30/2016	14:27:16	87	5.1	8.43	561.1	0				
06/30/2016	14:28:16	198	7.8	8.47	567.3	0				

Well			Field		Job Start		Customer		Job Number	
Land Fed 35C-32HZ			Wattenberg		Jun/30/2016		Anadarko		CWJN-01768	
Date	Time 24-hr clock	Treating Pressure PSI	Flow Rate B/M	Density LB/G	Volume BBL	Solid Fraction NULL	Message			
06/30/2016	14:30:15	199	7.9	8.41	583.0	0	Reset Total, Vol = 230.62 bbl			
06/30/2016	14:30:16	191	7.9	8.41	583.1	0	Drop Top Plug			
06/30/2016	14:30:17	199	7.9	8.41	583.2	0	Start Displacement			
06/30/2016	14:31:16	199	7.9	8.41	591.0	0				
06/30/2016	14:32:16	193	7.9	8.41	598.8	0				
06/30/2016	14:33:16	191	7.9	8.40	606.7	0				
06/30/2016	14:34:16	199	7.9	8.40	614.6	0				
06/30/2016	14:35:16	196	7.9	8.40	622.5	0				
06/30/2016	14:36:16	532	7.8	8.40	630.4	0				
06/30/2016	14:37:16	588	7.8	8.40	638.2	0				
06/30/2016	14:38:16	690	7.8	8.40	646.0	0				
06/30/2016	14:39:16	747	7.8	8.40	653.8	0				
06/30/2016	14:40:16	828	7.8	8.40	661.6	0				
06/30/2016	14:41:16	882	7.8	8.40	669.4	0				
06/30/2016	14:42:16	950	7.8	8.41	677.2	0				
06/30/2016	14:43:16	1063	7.8	8.40	684.9	0				
06/30/2016	14:44:16	1136	7.7	8.40	692.7	0				
06/30/2016	14:45:16	1229	7.8	8.40	700.5	0				
06/30/2016	14:46:16	1300	7.7	8.40	708.2	0				
06/30/2016	14:47:16	1369	7.7	8.40	716.0	0				
06/30/2016	14:48:16	1480	7.8	8.40	723.7	0				
06/30/2016	14:49:16	1565	7.7	8.40	731.4	0				
06/30/2016	14:50:16	1589	7.8	8.40	739.2	0				
06/30/2016	14:51:16	1634	7.7	8.40	746.9	0				
06/30/2016	14:52:16	1615	7.8	8.40	754.6	0				
06/30/2016	14:53:16	1649	7.7	8.40	762.3	0				
06/30/2016	14:54:16	1667	7.8	8.40	770.1	0				
06/30/2016	14:55:16	1654	7.8	8.40	777.8	0				
06/30/2016	14:56:16	1691	7.7	8.40	785.5	0				
06/30/2016	14:57:16	1687	7.7	8.40	793.2	0				
06/30/2016	14:58:16	1708	7.7	8.40	801.0	0				
06/30/2016	14:59:16	1777	7.6	8.40	808.7	0				
06/30/2016	15:00:07	1748	7.6	8.40	815.2	0	Good Returns			
06/30/2016	15:00:16	1777	7.7	8.40	816.4	0				
06/30/2016	15:01:16	1781	7.7	8.40	824.1	0				
06/30/2016	15:02:16	1818	7.7	8.40	831.8	0				
06/30/2016	15:03:16	1856	7.7	8.40	839.5	0				
06/30/2016	15:04:16	1638	6.3	8.40	846.3	0				
06/30/2016	15:05:16	1562	5.1	8.40	852.5	0				
06/30/2016	15:06:16	1567	4.9	8.40	857.5	0				
06/30/2016	15:07:16	1469	4.9	8.40	862.4	0				
06/30/2016	15:08:16	2470	0.0	8.40	863.4	0				
06/30/2016	15:09:16	2513	0.0	8.40	863.4	0				
06/30/2016	15:10:16	2983	0.0	8.40	863.8	0				
06/30/2016	15:11:16	3014	0.0	8.40	863.8	0				
06/30/2016	15:11:56	3043	0.0	8.40	863.8	0	Bump Top Plug			
06/30/2016	15:11:58	3050	0.0	8.40	863.8	0	Start Casing Test for 15 min			
06/30/2016	15:12:00	3038	0.0	8.40	863.8	0	10 BBL CemPRIME back to surface			
06/30/2016	15:12:16	3044	0.0	8.40	863.8	0				
06/30/2016	15:13:16	3075	0.0	8.40	863.8	0				
06/30/2016	15:14:16	3126	0.0	8.40	863.8	0				
06/30/2016	15:15:16	3130	0.0	8.40	863.8	0				
06/30/2016	15:16:16	3161	0.0	8.40	863.8	0				
06/30/2016	15:17:16	3178	0.0	8.40	863.8	0				

Well			Field		Job Start	Customer		Job Number
Land Fed 35C-32HZ			Wattenberg		Jun/30/2016	Anadarko		CWJN-01768
Date	Time 24-hr clock	Treating Pressure PSI	Flow Rate B/M	Density LB/G	Volume BBL	Solid Fraction NULL	Message	
06/30/2016	15:19:16	3222	0.0	8.40	863.8	0		
06/30/2016	15:20:16	3245	0.0	8.40	863.8	0		
06/30/2016	15:21:16	3268	0.0	8.40	863.8	0		
06/30/2016	15:22:16	3290	0.0	8.40	863.8	0		
06/30/2016	15:23:16	3311	0.0	8.40	863.8	0		
06/30/2016	15:24:16	3331	0.0	8.40	863.8	0		
06/30/2016	15:24:17	3331	0.0	8.40	863.8	0	End Casing Test	
06/30/2016	15:24:18	3332	0.0	8.40	863.8	0	2.5 BBL Back, Floats Held	
06/30/2016	15:25:16	3067	0.0	8.40	863.8	0		
06/30/2016	15:26:16	-21	0.0	8.40	863.8	0		

Post Job Summary

Average Pump Rates, bbl/min					Volume of Fluid Injected, bbl			
Slurry	N2	Mud	Maximum Rate		Total Slurry	Mud	Spacer	N2
6.8			484.5		863.8	0.0	75.2	
Treating Pressure Summary, psi					Breakdown Fluid			
Maximum	Final	Average	Bump Plug to	Breakdown	Type	Volume		Density
4857	-13	789				bbl		lb/gal
Avg. N2 Percent		Designed Slurry Volume		Displacement	Mix Water Temp	Cement Circulated to Surface?		Volume
%		385.0 bbl		281.2 bbl	75 degF	<input type="checkbox"/>		bbl
						Washed Thru Perfs		To
						<input type="checkbox"/>		ft
Customer or Authorized Representative			Schlumberger Supervisor			Circulation Lost		Job Completed
Josh Johnson			Glenn Mendez			<input type="checkbox"/>		<input type="checkbox"/>
						-		-