

EXTRACTION OIL & GAS

WELD COUNTY, COLORADO (NAD 83)

NW SW SEC. 21 T3N R68W 6th P.M.

KITELEY 10

ORIGINAL WELLBORE

24 August, 2016

Plan: PROPOSAL #1

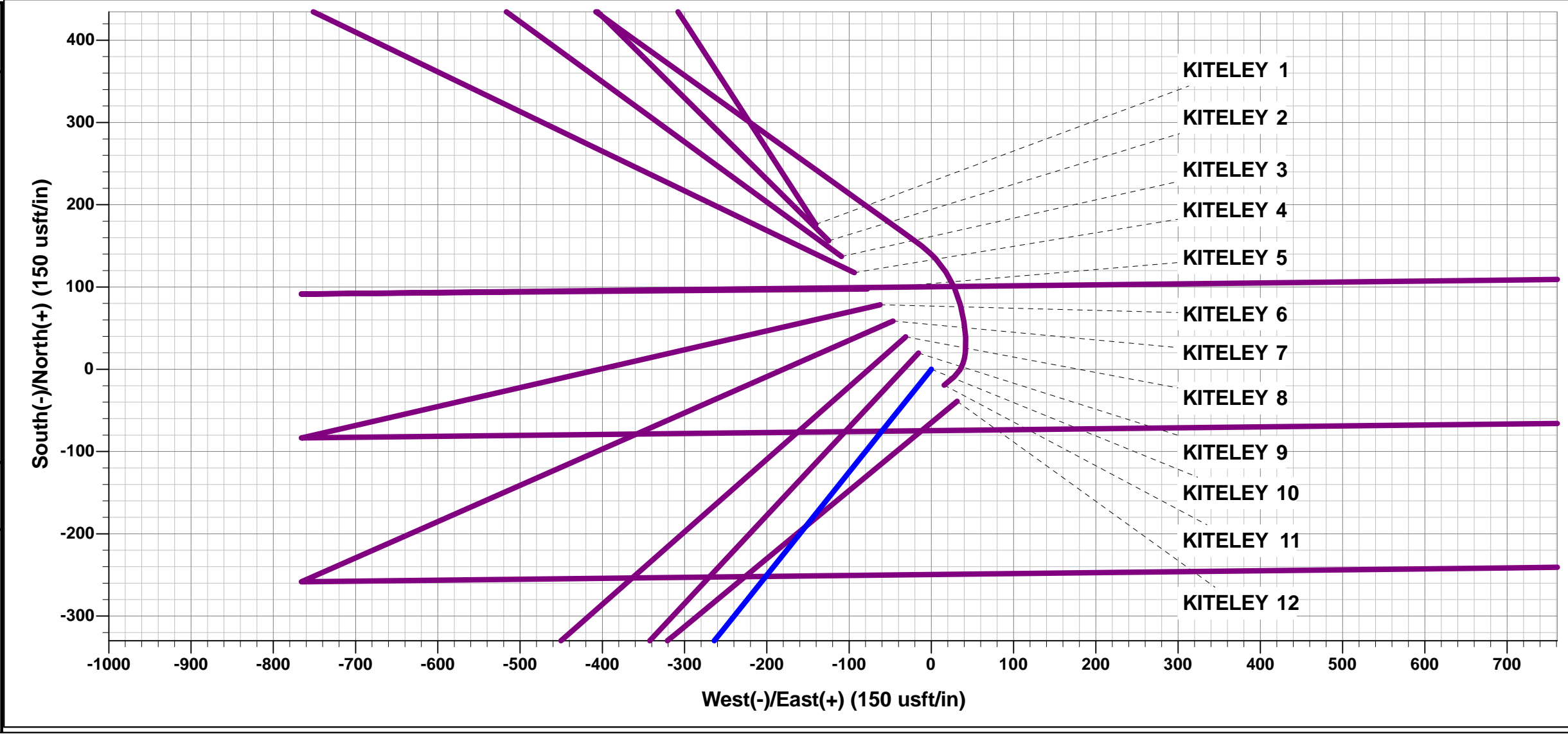




Project: WELD COUNTY, COLORADO (NAD 83)
Site: NW SW SEC. 21 T3N R68W 6th P.M.
Well: KITELEY 10
Wellbore: ORIGINAL WELLBORE
Design: PROPOSAL #1

ANNOTATIONS									
TVD	MD	Inc	Azi	+N/-S	+E/-W	VSect	Dep	Annotation	
0.0	0.0	0.00	0.00	0.0	0.0	0.0	0.0	SHL: 1350ft FSL & 653ft FWL of Sec 21	
300.0	300.0	0.00	0.00	0.0	0.0	0.0	0.0	START NUDGE (2°/100ft BUR)	
916.4	921.3	12.43	218.64	-52.4	-41.9	-29.9	67.1	EOB TO 12.43° INC	
5876.6	6000.4	12.43	218.64	-906.1	-724.3	-516.6	1160.0	END OF TANGENT	
6493.0	6621.7	0.00	0.00	-958.5	-766.2	-546.5	1227.1	EOD TO VERTICAL	
6523.0	6651.7	0.00	0.00	-958.5	-766.2	-546.5	1227.1	KOP (10°/100ft BUR)	
7096.0	7551.7	90.00	89.34	-951.9	-193.3	12.1	1800.1	HZ LP: 400ft FSL & 460ft FWL of Sec 21	
7096.0	11917.2	90.00	89.33	-901.3	4172.0	4268.2	6165.6	BHL: 400ft FSL & 460ft FEL of Sec 21	

WELLBORE TARGET DETAILS (LAT/LONG)					
Name	TVD	+N/-S	+E/-W	Latitude	Longitude
KOP - KITELEY 10	6523.0	-958.5	-766.2	40.205057	-105.017709
BHL - KITELEY 10	7096.0	-901.3	4172.0	40.205213	-105.000030
HZ LP - KITELEY 10	7096.0	-951.9	-193.3	40.205075	-105.015658



FORMATION TOP DETAILS		
TVDPath	MDPath	Formation
3550.0	3618.0	PARKMAN
4360.0	4447.5	SUSSEX
4602.0	4695.3	SHANNON
6926.0	7098.7	SHARON SPRINGS
6966.0	7158.1	NIOBRARA

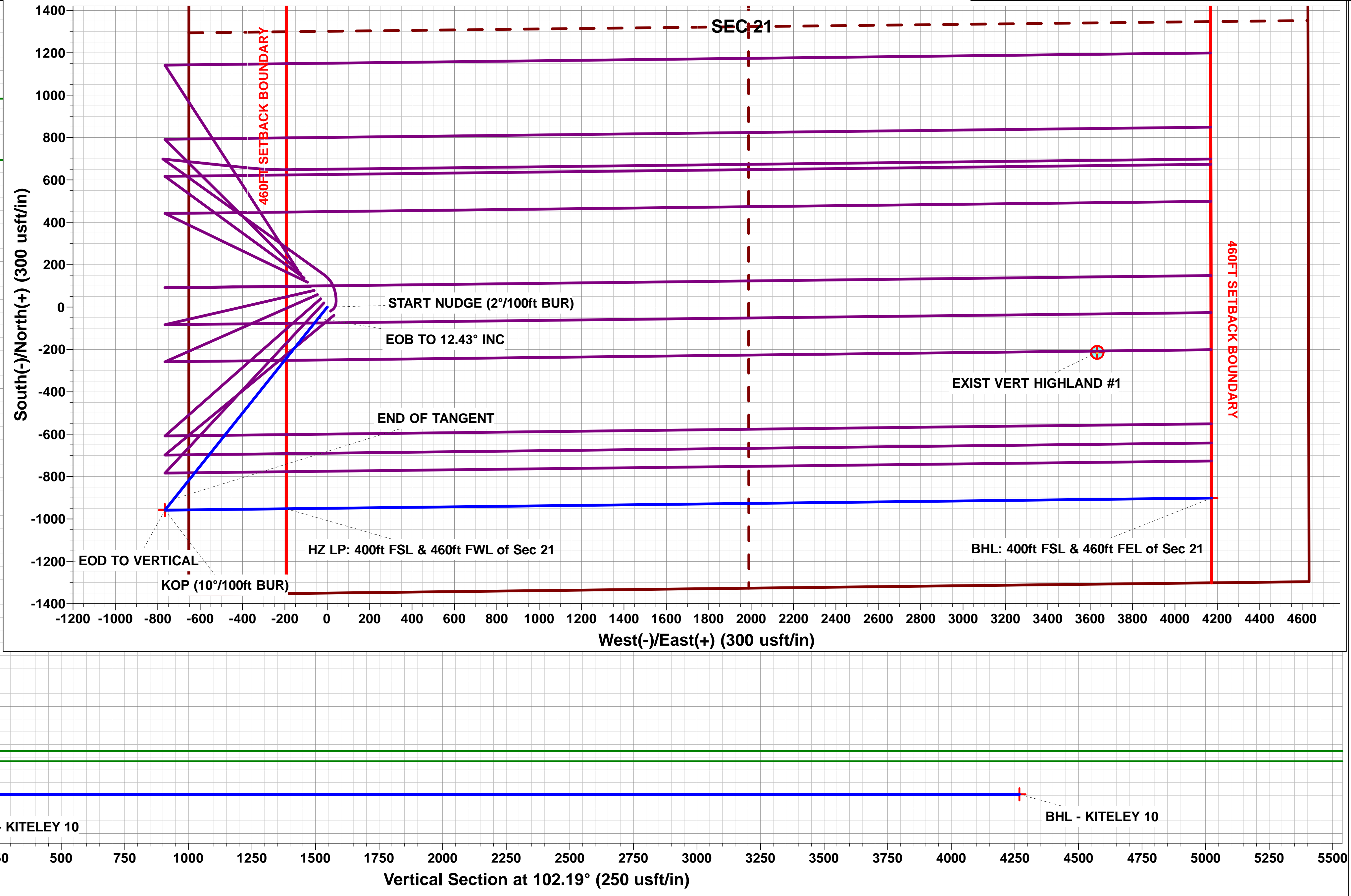
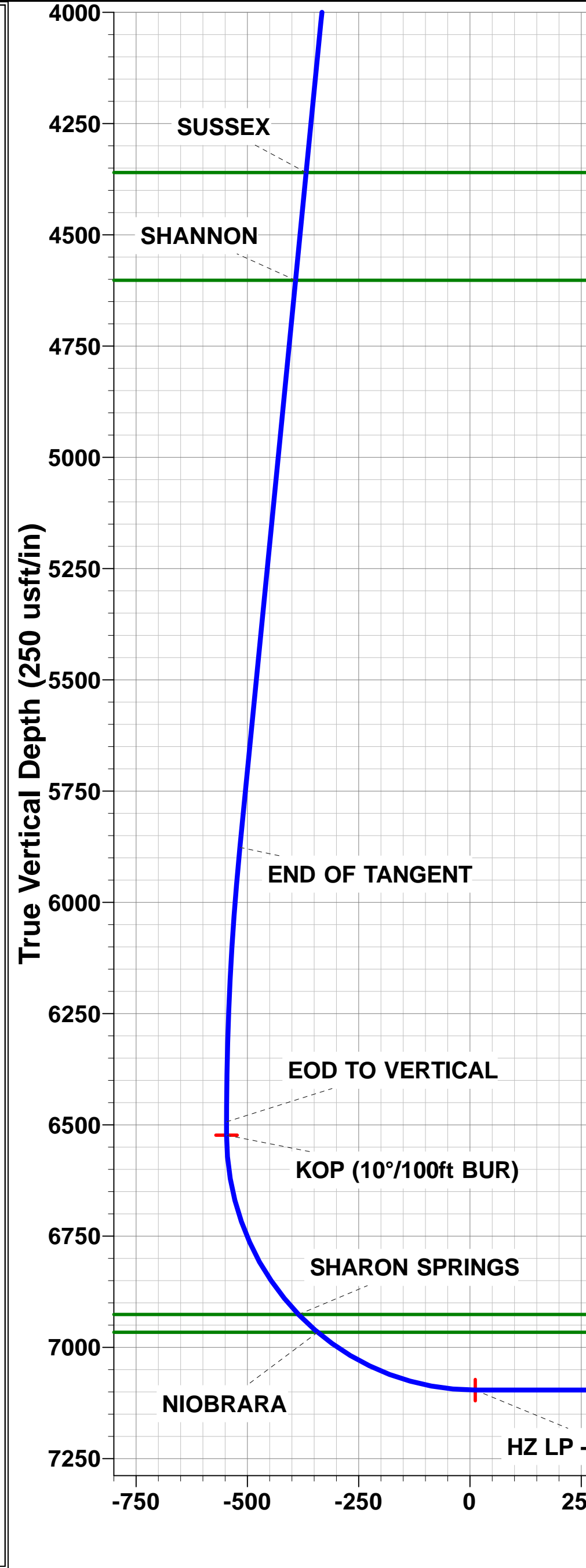
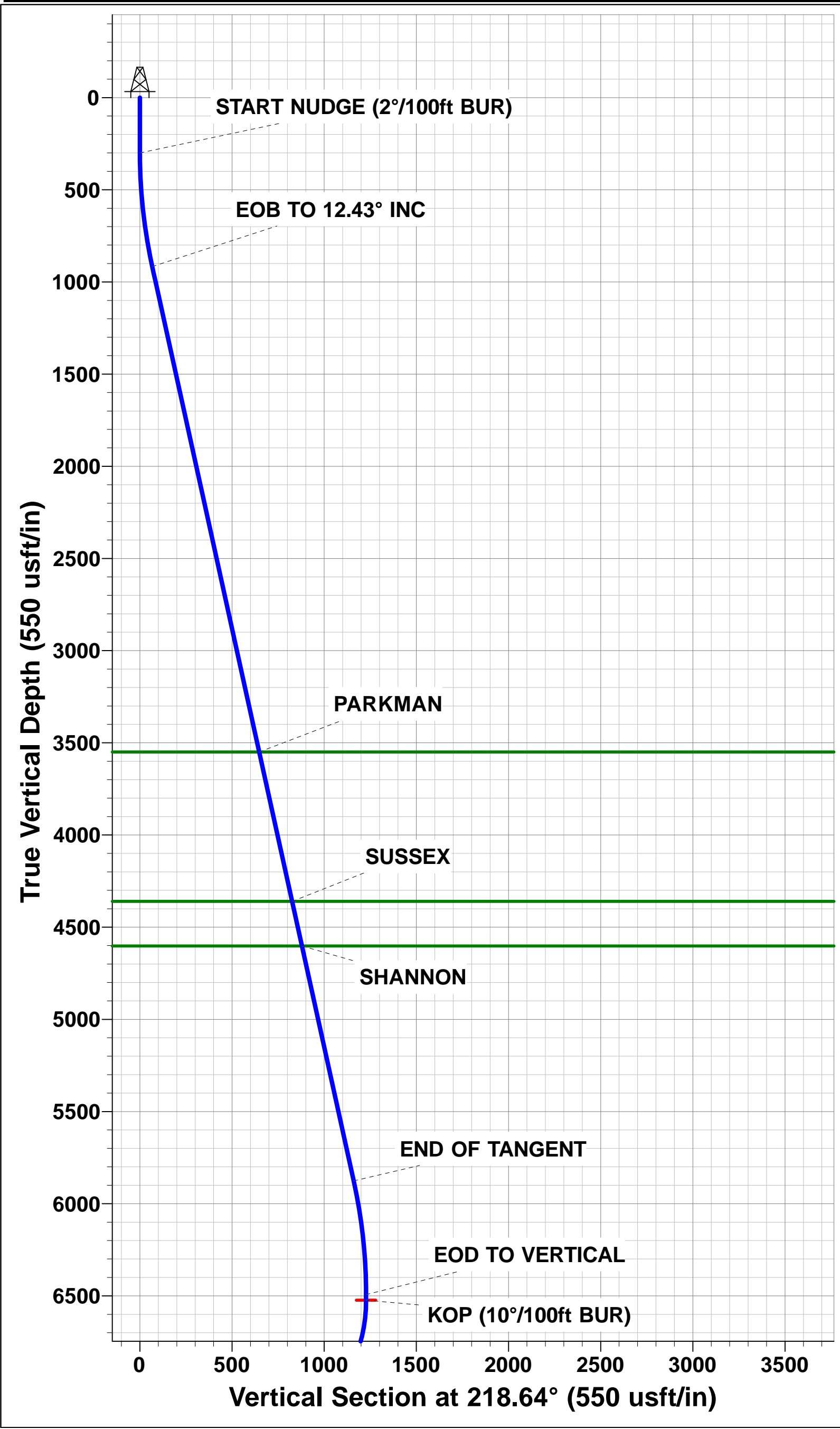
PROPOSED LOCAL COORDINATES	
SHL: 1350ft FSL & 653ft FWL of Sec 21	
LP: 400ft FSL & 460ft FWL of Sec 21	
BHL: 400ft FSL & 460ft FEL of Sec 21	

T

M

Azimuths to True North
Magnetic North: 8.41°

Magnetic Field
Strength: 52356.8snT
Dip Angle: 66.68°
Date: 24/08/2016
Model: IGRF2015



Planning Report



Database:	EDM 5000.1 Single User Db	Local Co-ordinate Reference:	Well KITELEY 10
Company:	EXTRACTION OIL & GAS	TVD Reference:	KB-EST @ 5004.0usft (Original Well Elev)
Project:	WELD COUNTY, COLORADO (NAD 83)	MD Reference:	KB-EST @ 5004.0usft (Original Well Elev)
Site:	NW SW SEC. 21 T3N R68W 6th P.M.	North Reference:	True
Well:	KITELEY 10	Survey Calculation Method:	Minimum Curvature
Wellbore:	ORIGINAL WELLBORE		
Design:	PROPOSAL #1		

Project	WELD COUNTY, COLORADO (NAD 83)		
Map System:	US State Plane 1983	System Datum:	Mean Sea Level
Geo Datum:	North American Datum 1983		
Map Zone:	Colorado Northern Zone		Using geodetic scale factor

Site	NW SW SEC. 21 T3N R68W 6th P.M.		
Site Position:		Northing:	1,319,048.75 usft
From:	Lat/Long	Easting:	3,135,328.07 usft
Position Uncertainty:	0.0 usft	Slot Radius:	1.10000ft
		Latitude:	40.208171
		Longitude:	-105.015469
		Grid Convergence:	0.31 °

Well	KITELEY 10		
Well Position	+N/-S	-176.0 usft	Northing:
	+E/-W	140.5 usft	Easting:
Position Uncertainty		0.0 usft	Wellhead Elevation:
			Latitude:
			Longitude:
			Ground Level:

Wellbore	ORIGINAL WELLBORE				
Magnetics	Model Name	Sample Date	Declination (°)	Dip Angle (°)	Field Strength (nT)
	IGRF2015	24/08/2016	8.41	66.68	52,357

Design	PROPOSAL #1			
Audit Notes:				
Version:	Phase:	PROTOTYPE	Tie On Depth:	0.0
Vertical Section:	Depth From (TVD) (usft)	+N/-S (usft)	+E/-W (usft)	Direction (°)
	7,096.0	0.0	0.0	102.19

Plan Sections											
MD (usft)	Inc (°)	Azi (°)	Vertical Depth	SS (usft)	+N/-S (usft)	+E/-W (usft)	Dogleg Rate (°/100usf)	Build Rate (°/100usf)	Turn Rate (°/100usf)	TFO (°)	Target
0.0	0.00	0.00	0.0	-5,004.0	0.0	0.0	0.00	0.00	0.00	0.00	
300.0	0.00	0.00	300.0	-4,704.0	0.0	0.0	0.00	0.00	0.00	0.00	
921.3	12.43	218.64	916.4	-4,087.6	-52.4	-41.9	2.00	2.00	0.00	218.64	
6,000.4	12.43	218.64	5,876.6	872.6	-906.1	-724.3	0.00	0.00	0.00	0.00	
6,621.7	0.00	0.00	6,493.0	1,489.0	-958.5	-766.2	2.00	-2.00	0.00	180.00	
6,651.7	0.00	0.00	6,523.0	1,519.0	-958.5	-766.2	0.00	0.00	0.00	0.00	KOP - KITELEY 10
7,551.7	90.00	89.34	7,096.0	2,092.0	-951.9	-193.3	10.00	10.00	0.00	89.34	
11,917.2	90.00	89.33	7,096.0	2,092.0	-901.3	4,172.0	0.00	0.00	0.00	-97.22	BHL - KITELEY 10

Database:	EDM 5000.1 Single User Db	Local Co-ordinate Reference:	Well KITELEY 10
Company:	EXTRACTION OIL & GAS	TVD Reference:	KB-EST @ 5004.0usft (Original Well Elev)
Project:	WELD COUNTY, COLORADO (NAD 83)	MD Reference:	KB-EST @ 5004.0usft (Original Well Elev)
Site:	NW SW SEC. 21 T3N R68W 6th P.M.	North Reference:	True
Well:	KITELEY 10	Survey Calculation Method:	Minimum Curvature
Wellbore:	ORIGINAL WELLBORE		
Design:	PROPOSAL #1		

Planned Survey

MD (usft)	Inc (°)	Azi (°)	TVD (usft)	SS (usft)	+N/-S (usft)	+E/-W (usft)	Vertical Section (usft)	Dogleg Rate (°/100usft)	Build Rate (°/100usft)	Turn Rate (°/100usft)
SHL: 1350ft FSL & 653ft FWL of Sec 21										
0.0	0.00	0.00	0.0	5,004.00	0.0	0.0	0.0	0.00	0.00	0.00
100.0	0.00	0.00	100.0	4,904.00	0.0	0.0	0.0	0.00	0.00	0.00
200.0	0.00	0.00	200.0	4,804.00	0.0	0.0	0.0	0.00	0.00	0.00
START NUDGE (2°/100ft BUR)										
300.0	0.00	0.00	300.0	4,704.00	0.0	0.0	0.0	0.00	0.00	0.00
400.0	2.00	218.64	400.0	4,604.02	-1.4	-1.1	-0.8	2.00	2.00	0.00
500.0	4.00	218.64	499.8	4,504.16	-5.5	-4.4	-3.1	2.00	2.00	0.00
600.0	6.00	218.64	599.5	4,404.55	-12.3	-9.8	-7.0	2.00	2.00	0.00
700.0	8.00	218.64	698.7	4,305.30	-21.8	-17.4	-12.4	2.00	2.00	0.00
800.0	10.00	218.64	797.5	4,206.53	-34.0	-27.2	-19.4	2.00	2.00	0.00
900.0	12.00	218.64	895.6	4,108.38	-48.9	-39.1	-27.9	2.00	2.00	0.00
EOB TO 12.43° INC										
921.3	12.43	218.64	916.4	4,087.57	-52.4	-41.9	-29.9	2.00	2.00	0.00
1,000.0	12.43	218.64	993.3	4,010.70	-65.6	-52.5	-37.4	0.00	0.00	0.00
1,100.0	12.43	218.64	1,091.0	3,913.04	-82.5	-65.9	-47.0	0.00	0.00	0.00
1,200.0	12.43	218.64	1,188.6	3,815.39	-99.3	-79.3	-56.6	0.00	0.00	0.00
1,300.0	12.43	218.64	1,286.3	3,717.73	-116.1	-92.8	-66.2	0.00	0.00	0.00
1,400.0	12.43	218.64	1,383.9	3,620.07	-132.9	-106.2	-75.8	0.00	0.00	0.00
1,500.0	12.43	218.64	1,481.6	3,522.41	-149.7	-119.7	-85.3	0.00	0.00	0.00
1,600.0	12.43	218.64	1,579.2	3,424.76	-166.5	-133.1	-94.9	0.00	0.00	0.00
1,700.0	12.43	218.64	1,676.9	3,327.10	-183.3	-146.5	-104.5	0.00	0.00	0.00
1,800.0	12.43	218.64	1,774.6	3,229.44	-200.1	-160.0	-114.1	0.00	0.00	0.00
1,900.0	12.43	218.64	1,872.2	3,131.78	-216.9	-173.4	-123.7	0.00	0.00	0.00
2,000.0	12.43	218.64	1,969.9	3,034.13	-233.7	-186.8	-133.3	0.00	0.00	0.00
2,100.0	12.43	218.64	2,067.5	2,936.47	-250.5	-200.3	-142.8	0.00	0.00	0.00
2,200.0	12.43	218.64	2,165.2	2,838.81	-267.3	-213.7	-152.4	0.00	0.00	0.00
2,300.0	12.43	218.64	2,262.8	2,741.15	-284.1	-227.1	-162.0	0.00	0.00	0.00
2,400.0	12.43	218.64	2,360.5	2,643.50	-300.9	-240.6	-171.6	0.00	0.00	0.00
2,500.0	12.43	218.64	2,458.2	2,545.84	-317.8	-254.0	-181.2	0.00	0.00	0.00
2,600.0	12.43	218.64	2,555.8	2,448.18	-334.6	-267.4	-190.8	0.00	0.00	0.00
2,700.0	12.43	218.64	2,653.5	2,350.52	-351.4	-280.9	-200.3	0.00	0.00	0.00
2,800.0	12.43	218.64	2,751.1	2,252.87	-368.2	-294.3	-209.9	0.00	0.00	0.00
2,900.0	12.43	218.64	2,848.8	2,155.21	-385.0	-307.7	-219.5	0.00	0.00	0.00
3,000.0	12.43	218.64	2,946.4	2,057.55	-401.8	-321.2	-229.1	0.00	0.00	0.00
3,100.0	12.43	218.64	3,044.1	1,959.89	-418.6	-334.6	-238.7	0.00	0.00	0.00
3,200.0	12.43	218.64	3,141.8	1,862.24	-435.4	-348.1	-248.3	0.00	0.00	0.00
3,300.0	12.43	218.64	3,239.4	1,764.58	-452.2	-361.5	-257.8	0.00	0.00	0.00
3,400.0	12.43	218.64	3,337.1	1,666.92	-469.0	-374.9	-267.4	0.00	0.00	0.00
3,500.0	12.43	218.64	3,434.7	1,569.26	-485.8	-388.4	-277.0	0.00	0.00	0.00
3,600.0	12.43	218.64	3,532.4	1,471.61	-502.6	-401.8	-286.6	0.00	0.00	0.00
PARKMAN										
3,618.0	12.43	218.64	3,550.0	1,454.00	-505.7	-404.2	-288.3	0.00	0.00	0.00
3,700.0	12.43	218.64	3,630.1	1,373.95	-519.4	-415.2	-296.2	0.00	0.00	0.00
3,800.0	12.43	218.64	3,727.7	1,276.29	-536.3	-428.7	-305.8	0.00	0.00	0.00
3,900.0	12.43	218.64	3,825.4	1,178.63	-553.1	-442.1	-315.3	0.00	0.00	0.00
4,000.0	12.43	218.64	3,923.0	1,080.98	-569.9	-455.5	-324.9	0.00	0.00	0.00
4,100.0	12.43	218.64	4,020.7	983.32	-586.7	-469.0	-334.5	0.00	0.00	0.00
4,200.0	12.43	218.64	4,118.3	885.66	-603.5	-482.4	-344.1	0.00	0.00	0.00
4,300.0	12.43	218.64	4,216.0	788.00	-620.3	-495.8	-353.7	0.00	0.00	0.00
4,400.0	12.43	218.64	4,313.7	690.34	-637.1	-509.3	-363.3	0.00	0.00	0.00
SUSSEX										
4,447.5	12.43	218.64	4,360.0	644.00	-645.1	-515.7	-367.8	0.00	0.00	0.00
4,500.0	12.43	218.64	4,411.3	592.69	-653.9	-522.7	-372.8	0.00	0.00	0.00

Database:	EDM 5000.1 Single User Db	Local Co-ordinate Reference:	Well KITELEY 10
Company:	EXTRACTION OIL & GAS	TVD Reference:	KB-EST @ 5004.0usft (Original Well Elev)
Project:	WELD COUNTY, COLORADO (NAD 83)	MD Reference:	KB-EST @ 5004.0usft (Original Well Elev)
Site:	NW SW SEC. 21 T3N R68W 6th P.M.	North Reference:	True
Well:	KITELEY 10	Survey Calculation Method:	Minimum Curvature
Wellbore:	ORIGINAL WELLBORE		
Design:	PROPOSAL #1		

Planned Survey

MD (usft)	Inc (°)	Azi (°)	TVD (usft)	SS (usft)	+N/-S (usft)	+E/-W (usft)	Vertical Section (usft)	Dogleg Rate (°/100usft)	Build Rate (°/100usft)	Turn Rate (°/100usft)
4,600.0	12.43	218.64	4,509.0	495.03	-670.7	-536.1	-382.4	0.00	0.00	0.00
SHANNON										
4,695.3	12.43	218.64	4,602.0	402.00	-686.7	-548.9	-391.6	0.00	0.00	0.00
4,700.0	12.43	218.64	4,606.6	397.37	-687.5	-549.6	-392.0	0.00	0.00	0.00
4,800.0	12.43	218.64	4,704.3	299.71	-704.3	-563.0	-401.6	0.00	0.00	0.00
4,900.0	12.43	218.64	4,801.9	202.06	-721.1	-576.5	-411.2	0.00	0.00	0.00
5,000.0	12.43	218.64	4,899.6	104.40	-737.9	-589.9	-420.8	0.00	0.00	0.00
5,100.0	12.43	218.64	4,997.3	6.74	-754.7	-603.3	-430.3	0.00	0.00	0.00
5,200.0	12.43	218.64	5,094.9	-90.92	-771.6	-616.8	-439.9	0.00	0.00	0.00
5,300.0	12.43	218.64	5,192.6	-188.57	-788.4	-630.2	-449.5	0.00	0.00	0.00
5,400.0	12.43	218.64	5,290.2	-286.23	-805.2	-643.6	-459.1	0.00	0.00	0.00
5,500.0	12.43	218.64	5,387.9	-383.89	-822.0	-657.1	-468.7	0.00	0.00	0.00
5,600.0	12.43	218.64	5,485.5	-481.55	-838.8	-670.5	-478.3	0.00	0.00	0.00
5,700.0	12.43	218.64	5,583.2	-579.20	-855.6	-683.9	-487.8	0.00	0.00	0.00
5,800.0	12.43	218.64	5,680.9	-676.86	-872.4	-697.4	-497.4	0.00	0.00	0.00
5,900.0	12.43	218.64	5,778.5	-774.52	-889.2	-710.8	-507.0	0.00	0.00	0.00
6,000.0	12.43	218.64	5,876.2	-872.18	-906.0	-724.2	-516.6	0.00	0.00	0.00
END OF TANGENT										
6,000.4	12.43	218.64	5,876.6	-872.57	-906.1	-724.3	-516.6	0.00	0.00	0.00
6,100.0	10.43	218.64	5,974.2	-970.19	-921.5	-736.6	-525.4	2.00	-2.00	0.00
6,200.0	8.43	218.64	6,072.8	-1,068.83	-934.3	-746.9	-532.7	2.00	-2.00	0.00
6,300.0	6.43	218.64	6,172.0	-1,167.98	-944.4	-754.9	-538.5	2.00	-2.00	0.00
6,400.0	4.43	218.64	6,271.5	-1,267.53	-951.8	-760.8	-542.7	2.00	-2.00	0.00
6,500.0	2.43	218.64	6,371.3	-1,367.34	-956.5	-764.6	-545.4	2.00	-2.00	0.00
6,600.0	0.43	218.64	6,471.3	-1,467.31	-958.4	-766.1	-546.5	2.00	-2.00	0.00
EOD TO VERTICAL										
6,621.7	0.00	0.00	6,493.0	-1,489.00	-958.5	-766.2	-546.5	2.00	-2.00	0.00
KOP (10°/100ft BUR)										
6,651.7	0.00	0.00	6,523.0	-1,519.00	-958.5	-766.2	-546.5	0.00	0.00	0.00
6,700.0	4.83	89.34	6,571.3	-1,567.25	-958.5	-764.2	-544.5	10.00	10.00	0.00
6,800.0	14.83	89.34	6,669.7	-1,665.66	-958.3	-747.1	-527.9	10.00	10.00	0.00
6,900.0	24.83	89.34	6,763.6	-1,759.61	-957.9	-713.2	-494.9	10.00	10.00	0.00
7,000.0	34.83	89.34	6,850.2	-1,846.25	-957.3	-663.6	-446.4	10.00	10.00	0.00
SHARON SPRINGS										
7,098.7	44.70	89.34	6,926.0	-1,922.00	-956.6	-600.5	-385.0	10.00	10.00	0.00
7,100.0	44.83	89.34	6,926.9	-1,922.94	-956.6	-599.6	-384.1	10.00	10.00	0.00
NIORARA										
7,158.1	50.64	89.34	6,966.0	-1,962.00	-956.1	-556.6	-342.2	10.00	10.00	0.00
7,200.0	54.83	89.34	6,991.4	-1,987.37	-955.7	-523.3	-309.7	10.00	10.00	0.00
7,300.0	64.83	89.34	7,041.6	-2,037.56	-954.7	-436.9	-225.5	10.00	10.00	0.00
7,400.0	74.83	89.34	7,076.0	-2,071.99	-953.6	-343.2	-134.1	10.00	10.00	0.00
7,500.0	84.83	89.34	7,093.6	-2,089.63	-952.5	-244.9	-38.2	10.00	10.00	0.00
HZ LP: 400ft FSL & 460ft FWL of Sec 21										
7,551.7	90.00	89.34	7,096.0	-2,091.96	-951.9	-193.3	12.1	10.00	10.00	0.00
7,600.0	90.00	89.34	7,096.0	-2,091.96	-951.3	-145.0	59.2	0.00	0.00	0.00
7,700.0	90.00	89.34	7,096.0	-2,091.96	-950.2	-45.0	156.7	0.00	0.00	0.00
7,800.0	90.00	89.34	7,096.0	-2,091.96	-949.0	55.0	254.2	0.00	0.00	0.00
7,900.0	90.00	89.34	7,096.0	-2,091.96	-947.9	155.0	351.7	0.00	0.00	0.00
8,000.0	90.00	89.34	7,096.0	-2,091.96	-946.7	255.0	449.2	0.00	0.00	0.00
8,100.0	90.00	89.34	7,096.0	-2,091.96	-945.6	355.0	546.7	0.00	0.00	0.00
8,200.0	90.00	89.34	7,096.0	-2,091.96	-944.4	455.0	644.2	0.00	0.00	0.00
8,300.0	90.00	89.34	7,096.0	-2,091.96	-943.3	555.0	741.6	0.00	0.00	0.00
8,400.0	90.00	89.34	7,096.0	-2,091.96	-942.1	655.0	839.1	0.00	0.00	0.00

Planning Report



Database:	EDM 5000.1 Single User Db	Local Co-ordinate Reference:	Well KITELEY 10
Company:	EXTRACTION OIL & GAS	TVD Reference:	KB-EST @ 5004.0usft (Original Well Elev)
Project:	WELD COUNTY, COLORADO (NAD 83)	MD Reference:	KB-EST @ 5004.0usft (Original Well Elev)
Site:	NW SW SEC. 21 T3N R68W 6th P.M.	North Reference:	True
Well:	KITELEY 10	Survey Calculation Method:	Minimum Curvature
Wellbore:	ORIGINAL WELLBORE		
Design:	PROPOSAL #1		

Planned Survey

MD (usft)	Inc (°)	Azi (°)	TVD (usft)	SS (usft)	+N/-S (usft)	+E/-W (usft)	Vertical Section (usft)	Dogleg Rate (°/100usft)	Build Rate (°/100usft)	Turn Rate (°/100usft)
8,500.0	90.00	89.34	7,096.0	-2,091.96	-941.0	755.0	936.6	0.00	0.00	0.00
8,600.0	90.00	89.34	7,096.0	-2,091.96	-939.8	855.0	1,034.1	0.00	0.00	0.00
8,700.0	90.00	89.34	7,096.0	-2,091.96	-938.6	955.0	1,131.6	0.00	0.00	0.00
8,800.0	90.00	89.34	7,096.0	-2,091.96	-937.5	1,054.9	1,229.1	0.00	0.00	0.00
8,900.0	90.00	89.34	7,096.0	-2,091.96	-936.3	1,154.9	1,326.6	0.00	0.00	0.00
9,000.0	90.00	89.34	7,096.0	-2,091.96	-935.2	1,254.9	1,424.1	0.00	0.00	0.00
9,100.0	90.00	89.34	7,096.0	-2,091.96	-934.0	1,354.9	1,521.6	0.00	0.00	0.00
9,200.0	90.00	89.34	7,096.0	-2,091.96	-932.9	1,454.9	1,619.1	0.00	0.00	0.00
9,300.0	90.00	89.34	7,096.0	-2,091.96	-931.7	1,554.9	1,716.6	0.00	0.00	0.00
9,400.0	90.00	89.34	7,096.0	-2,091.97	-930.5	1,654.9	1,814.1	0.00	0.00	0.00
9,500.0	90.00	89.34	7,096.0	-2,091.97	-929.4	1,754.9	1,911.6	0.00	0.00	0.00
9,600.0	90.00	89.34	7,096.0	-2,091.97	-928.2	1,854.9	2,009.1	0.00	0.00	0.00
9,700.0	90.00	89.34	7,096.0	-2,091.97	-927.1	1,954.9	2,106.6	0.00	0.00	0.00
9,800.0	90.00	89.34	7,096.0	-2,091.97	-925.9	2,054.9	2,204.1	0.00	0.00	0.00
9,900.0	90.00	89.34	7,096.0	-2,091.97	-924.8	2,154.9	2,301.6	0.00	0.00	0.00
10,000.0	90.00	89.34	7,096.0	-2,091.97	-923.6	2,254.9	2,399.0	0.00	0.00	0.00
10,100.0	90.00	89.33	7,096.0	-2,091.97	-922.4	2,354.9	2,496.5	0.00	0.00	0.00
10,200.0	90.00	89.33	7,096.0	-2,091.97	-921.3	2,454.9	2,594.0	0.00	0.00	0.00
10,300.0	90.00	89.33	7,096.0	-2,091.97	-920.1	2,554.8	2,691.5	0.00	0.00	0.00
10,400.0	90.00	89.33	7,096.0	-2,091.98	-918.9	2,654.8	2,789.0	0.00	0.00	0.00
10,500.0	90.00	89.33	7,096.0	-2,091.98	-917.8	2,754.8	2,886.5	0.00	0.00	0.00
10,600.0	90.00	89.33	7,096.0	-2,091.98	-916.6	2,854.8	2,984.0	0.00	0.00	0.00
10,700.0	90.00	89.33	7,096.0	-2,091.98	-915.5	2,954.8	3,081.5	0.00	0.00	0.00
10,800.0	90.00	89.33	7,096.0	-2,091.98	-914.3	3,054.8	3,179.0	0.00	0.00	0.00
10,900.0	90.00	89.33	7,096.0	-2,091.98	-913.1	3,154.8	3,276.5	0.00	0.00	0.00
11,000.0	90.00	89.33	7,096.0	-2,091.98	-912.0	3,254.8	3,374.0	0.00	0.00	0.00
11,100.0	90.00	89.33	7,096.0	-2,091.99	-910.8	3,354.8	3,471.5	0.00	0.00	0.00
11,200.0	90.00	89.33	7,096.0	-2,091.99	-909.6	3,454.8	3,569.0	0.00	0.00	0.00
11,300.0	90.00	89.33	7,096.0	-2,091.99	-908.5	3,554.8	3,666.5	0.00	0.00	0.00
11,400.0	90.00	89.33	7,096.0	-2,091.99	-907.3	3,654.8	3,763.9	0.00	0.00	0.00
11,500.0	90.00	89.33	7,096.0	-2,091.99	-906.1	3,754.8	3,861.4	0.00	0.00	0.00
11,600.0	90.00	89.33	7,096.0	-2,091.99	-905.0	3,854.8	3,958.9	0.00	0.00	0.00
11,700.0	90.00	89.33	7,096.0	-2,092.00	-903.8	3,954.7	4,056.4	0.00	0.00	0.00
11,800.0	90.00	89.33	7,096.0	-2,092.00	-902.6	4,054.7	4,153.9	0.00	0.00	0.00
11,900.0	90.00	89.33	7,096.0	-2,092.00	-901.5	4,154.7	4,251.4	0.00	0.00	0.00
BHL: 400ft FSL & 460ft FEL of Sec 21										
11,917.2	90.00	89.33	7,096.0	-2,092.00	-901.3	4,172.0	4,268.2	0.00	0.00	0.00

Formations

MD (usft)	TVD (usft)	Name	Lithology	Dip (°)	Dip Direction (°)
3,618.0	3,550.0	PARKMAN			
4,447.5	4,360.0	SUSSEX			
4,695.3	4,602.0	SHANNON			
7,098.7	6,926.0	SHARON SPRINGS			
7,158.1	6,966.0	NIOBRARA			

Database:	EDM 5000.1 Single User Db	Local Co-ordinate Reference:	Well KITELEY 10
Company:	EXTRACTION OIL & GAS	TVD Reference:	KB-EST @ 5004.0usft (Original Well Elev)
Project:	WELD COUNTY, COLORADO (NAD 83)	MD Reference:	KB-EST @ 5004.0usft (Original Well Elev)
Site:	NW SW SEC. 21 T3N R68W 6th P.M.	North Reference:	True
Well:	KITELEY 10	Survey Calculation Method:	Minimum Curvature
Wellbore:	ORIGINAL WELLBORE		
Design:	PROPOSAL #1		

Plan Annotations

MD (usft)	TVD (usft)	Local Coordinates		Comment
		+N/-S (usft)	+E/-W (usft)	
0.0	0.0	0.0	0.0	SHL: 1350ft FSL & 653ft FWL of Sec 21
300.0	300.0	0.0	0.0	START NUDGE (2°/100ft BUR)
921.3	916.4	-52.4	-41.9	EOB TO 12.43° INC
6,000.4	5,876.6	-906.1	-724.3	END OF TANGENT
6,621.7	6,493.0	-958.5	-766.2	EOD TO VERTICAL
6,651.7	6,523.0	-958.5	-766.2	KOP (10°/100ft BUR)
7,551.7	7,096.0	-951.9	-193.3	HZ LP: 400ft FSL & 460ft FWL of Sec 21
11,917.2	7,096.0	-901.3	4,172.0	BHL: 400ft FSL & 460ft FEL of Sec 21