

# **EXTRACTION OIL & GAS**

**WELD COUNTY, COLORADO (NAD 83)**

**NW SW SEC. 21 T3N R68W 6th P.M.**

**KITELEY 7**

**ORIGINAL WELLBORE**

**24 August, 2016**

**Plan: PROPOSAL #1**

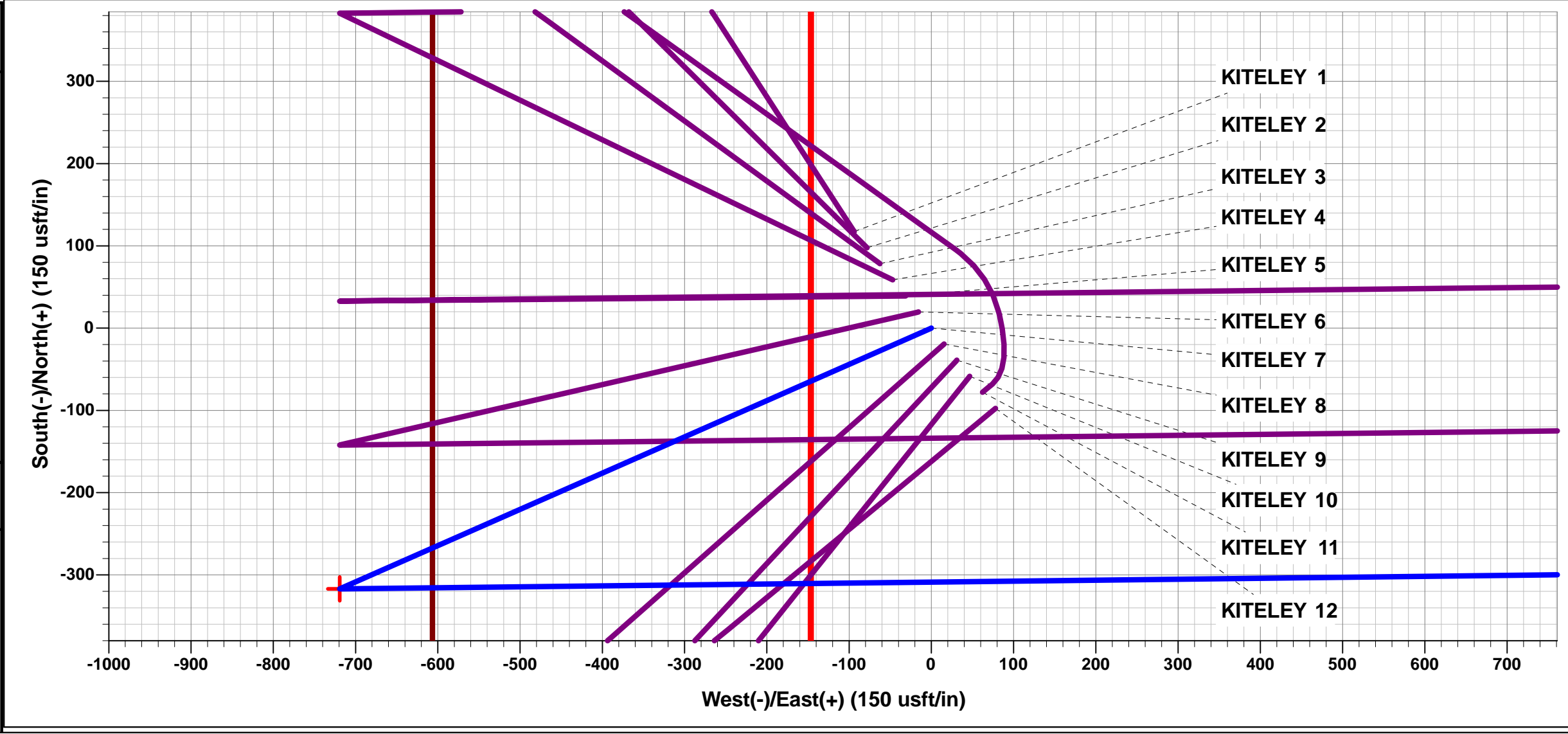




Project: WELD COUNTY, COLORADO (NAD 83)  
Site: NW SW SEC. 21 T3N R68W 6th P.M.  
Well: KITELEY 7  
Wellbore: ORIGINAL WELLBORE  
Design: PROPOSAL #1

ANNOTATIONS								
TVD	MD	Inc	Azi	+N/-S	+E/-W	Vsect	Dep	Annotation
0.0	0.0	0.00	0.00	0.0	0.0	0.0	0.0	SHL: 1409ft FSL & 606ft FWL of Sec 21
600.0	600.0	0.00	0.00	0.0	0.0	0.0	0.0	START NUDGE (2°/100ft BUR)
1195.7	1200.1	12.00	246.22	-25.3	-57.3	-55.6	62.6	EOB TO 12° INC
4304.3	4378.2	12.00	246.22	-291.7	-662.0	-642.8	723.4	END OF TANGENT
4900.0	4978.2	0.00	0.00	-317.0	-719.3	-698.4	786.1	EOD TO VERTICAL
6523.0	6601.2	0.00	0.00	-317.0	-719.3	-698.4	786.1	KOP (10°/100ft BUR)
7096.0	7501.2	90.00	89.34	-310.4	-146.4	-127.0	1359.0	HZ LP: 1100ft FSL & 460ft FWL of Sec 21
7096.0	11865.3	90.00	89.34	-260.1	4217.4	4225.4	5723.1	BHL: 1100ft FSL & 460ft FEL of Sec 21

WELLBORE TARGET DETAILS (LAT/LONG)					
Name	TVD	+N/-S	+E/-W	Latitude	Longitude
KOP - KITELEY 7	6523.0	-317.0	-719.3	40.206979	-105.017708
BHL - KITELEY 7	7096.0	-260.1	4217.4	40.207134	-105.000034
HZ LP - KITELEY 7	7096.0	-310.4	-146.4	40.206997	-105.015657



FORMATION TOP DETAILS		
TVDPath	MDPath	Formation
3550.0	3607.0	PARKMAN
4360.0	4435.0	SUSSEX
4602.0	4679.7	SHANNON
6926.0	7048.2	SHARON SPRINGS
6966.0	7107.6	NIOBRARA

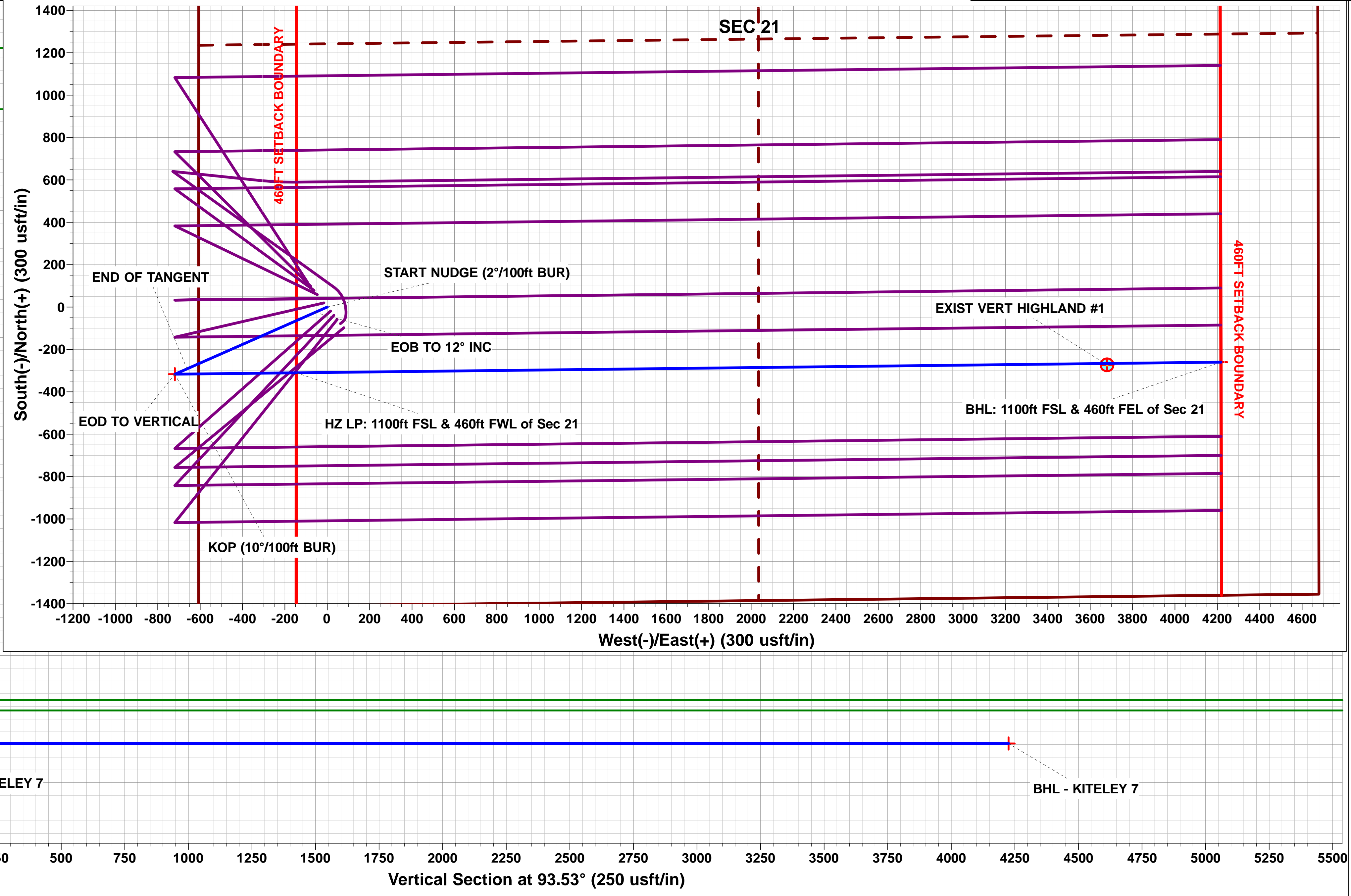
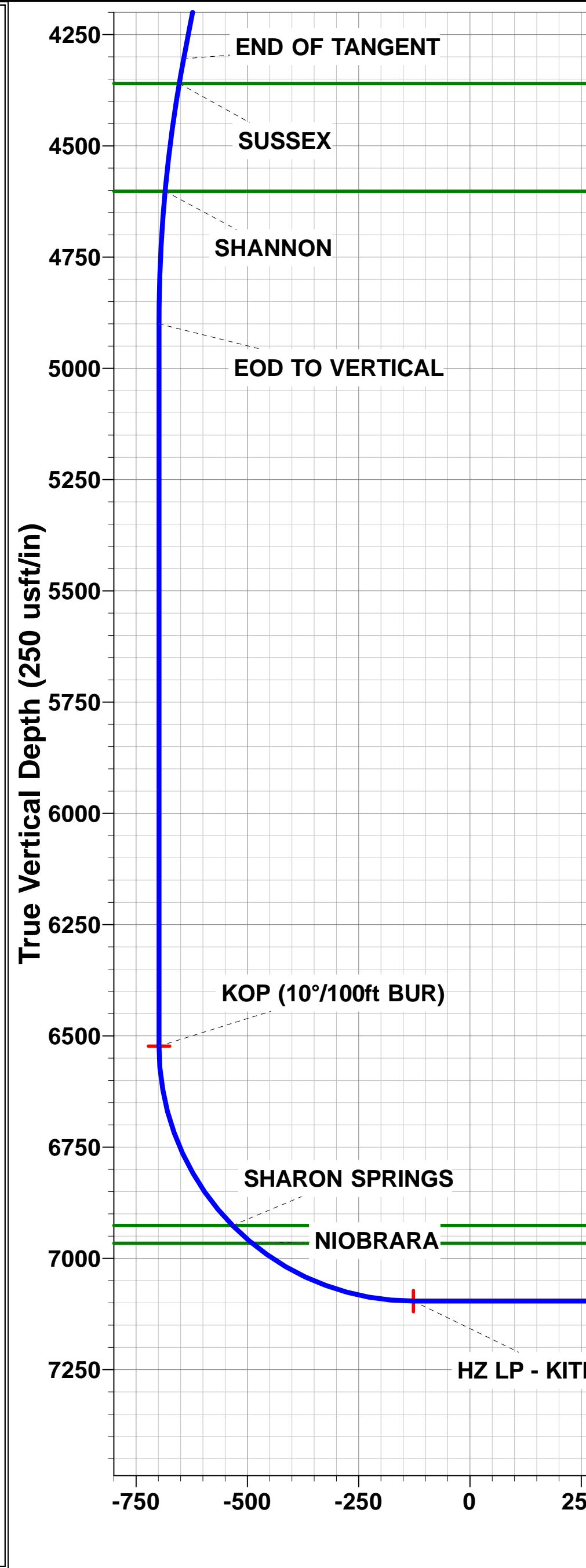
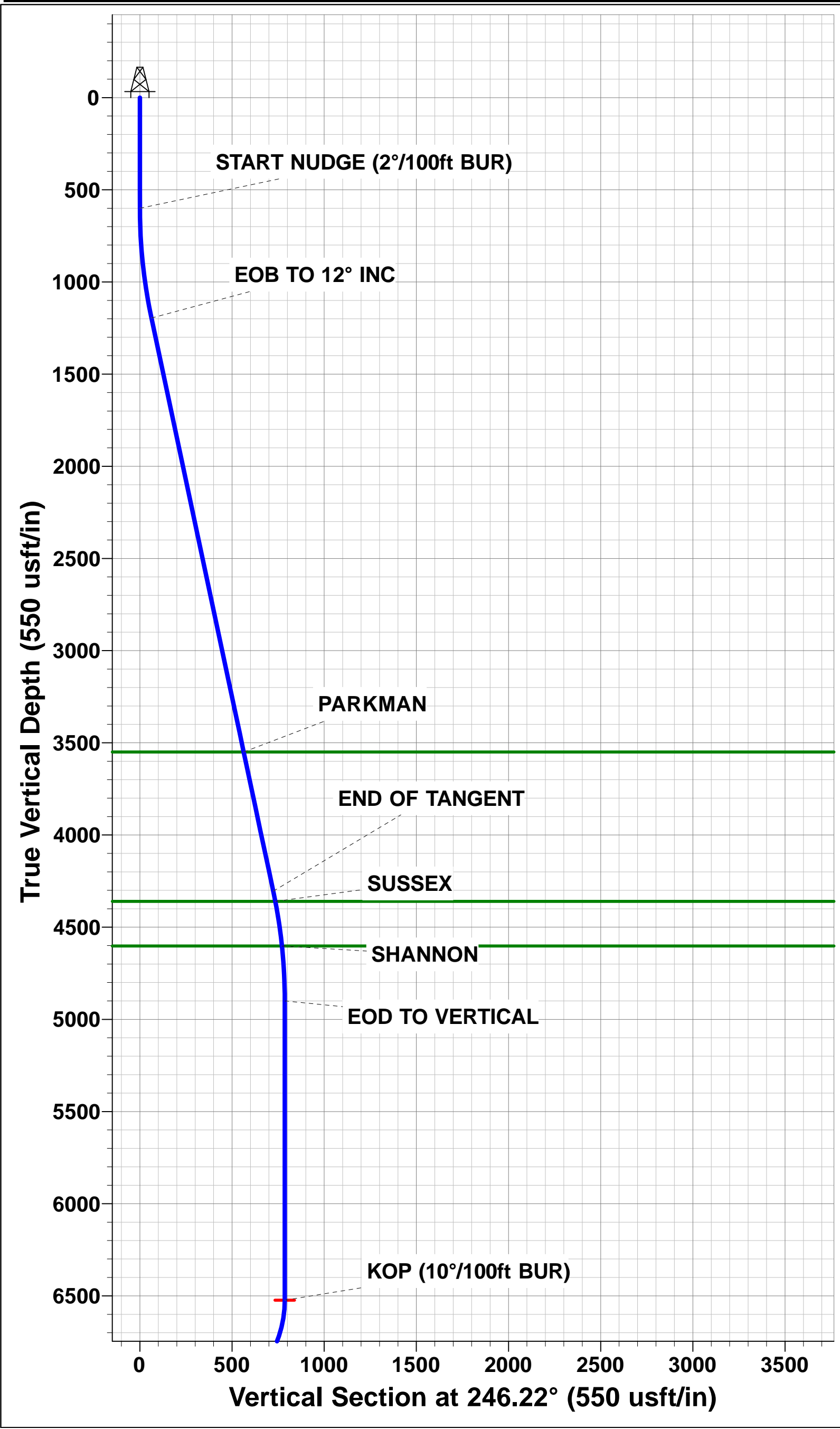
PROPOSED LOCAL COORDINATES	
SHL: 1409ft FSL & 606ft FWL of Sec 21	
LP: 1100ft FSL & 460ft FWL of Sec 21	
BHL: 1100ft FSL & 460ft FEL of Sec 21	

T

M

Azimuths to True North  
Magnetic North: 8.41°

Magnetic Field  
Strength: 52356.9snT  
Dip Angle: 66.68°  
Date: 24/08/2016  
Model: IGRF2015



# Planning Report



<b>Database:</b>	EDM 5000.1 Single User Db	<b>Local Co-ordinate Reference:</b>	Well KITELEY 7
<b>Company:</b>	EXTRACTION OIL & GAS	<b>TVD Reference:</b>	KB-EST @ 5005.0usft
<b>Project:</b>	WELD COUNTY, COLORADO (NAD 83)	<b>MD Reference:</b>	KB-EST @ 5005.0usft
<b>Site:</b>	NW SW SEC. 21 T3N R68W 6th P.M.	<b>North Reference:</b>	True
<b>Well:</b>	KITELEY 7	<b>Survey Calculation Method:</b>	Minimum Curvature
<b>Wellbore:</b>	ORIGINAL WELLBORE		
<b>Design:</b>	PROPOSAL #1		

<b>Project</b>	WELD COUNTY, COLORADO (NAD 83)		
<b>Map System:</b>	US State Plane 1983	<b>System Datum:</b>	Mean Sea Level
<b>Geo Datum:</b>	North American Datum 1983		
<b>Map Zone:</b>	Colorado Northern Zone		Using geodetic scale factor

<b>Site</b>	NW SW SEC. 21 T3N R68W 6th P.M.		
<b>Site Position:</b>		<b>Northing:</b>	1,319,048.75 usft
<b>From:</b>	Lat/Long	<b>Easting:</b>	3,135,328.07 usft
<b>Position Uncertainty:</b>	0.0 usft	<b>Slot Radius:</b>	1.10000ft
		<b>Latitude:</b>	40.208171
		<b>Longitude:</b>	-105.015469
		<b>Grid Convergence:</b>	0.31 °

<b>Well</b>	KITELEY 7		
<b>Well Position</b>	<b>+N/-S</b>	-117.3 usft	<b>Northing:</b>
	<b>+E/-W</b>	93.8 usft	<b>Easting:</b>
<b>Position Uncertainty</b>		0.0 usft	<b>Wellhead Elevation:</b>
			<b>Latitude:</b>
			<b>Longitude:</b>
			<b>Ground Level:</b>

<b>Wellbore</b>	ORIGINAL WELLBORE				
<b>Magnetics</b>	<b>Model Name</b>	<b>Sample Date</b>	<b>Declination (°)</b>	<b>Dip Angle (°)</b>	<b>Field Strength (nT)</b>
	IGRF2015	24/08/2016	8.41	66.68	52,357

<b>Design</b>	PROPOSAL #1			
<b>Audit Notes:</b>				
<b>Version:</b>	<b>Phase:</b>	PROTOTYPE	<b>Tie On Depth:</b>	0.0
<b>Vertical Section:</b>	<b>Depth From (TVD) (usft)</b>	<b>+N/-S (usft)</b>	<b>+E/-W (usft)</b>	<b>Direction (°)</b>
	0.0	0.0	0.0	93.53

<b>Plan Sections</b>											
MD (usft)	Inc (°)	Azi (°)	Vertical Depth	SS (usft)	+N/-S (usft)	+E/-W (usft)	Dogleg Rate (°/100usf)	Build Rate (°/100usf)	Turn Rate (°/100usf)	TFO (°)	Target
0.0	0.00	0.00	0.0	-5,005.0	0.0	0.0	0.00	0.00	0.00	0.00	
600.0	0.00	0.00	600.0	-4,405.0	0.0	0.0	0.00	0.00	0.00	0.00	
1,200.1	12.00	246.22	1,195.7	-3,809.3	-25.3	-57.3	2.00	2.00	0.00	246.22	
4,378.2	12.00	246.22	4,304.3	-700.7	-291.7	-662.0	0.00	0.00	0.00	0.00	
4,978.2	0.00	0.00	4,900.0	-105.0	-317.0	-719.3	2.00	-2.00	0.00	180.00	
6,601.2	0.00	0.00	6,523.0	1,518.0	-317.0	-719.3	0.00	0.00	0.00	0.00	KOP - KITELEY 7
7,501.2	90.00	89.34	7,096.0	2,091.0	-310.4	-146.4	10.00	10.00	0.00	89.34	
11,865.3	90.00	89.34	7,096.0	2,091.0	-260.1	4,217.4	0.00	0.00	0.00	0.00	BHL - KITELEY 7

## Planning Report



<b>Database:</b>	EDM 5000.1 Single User Db	<b>Local Co-ordinate Reference:</b>	Well KITELEY 7
<b>Company:</b>	EXTRACTION OIL & GAS	<b>TVD Reference:</b>	KB-EST @ 5005.0usft
<b>Project:</b>	WELD COUNTY, COLORADO (NAD 83)	<b>MD Reference:</b>	KB-EST @ 5005.0usft
<b>Site:</b>	NW SW SEC. 21 T3N R68W 6th P.M.	<b>North Reference:</b>	True
<b>Well:</b>	KITELEY 7	<b>Survey Calculation Method:</b>	Minimum Curvature
<b>Wellbore:</b>	ORIGINAL WELLBORE		
<b>Design:</b>	PROPOSAL #1		

## Planned Survey

MD (usft)	Inc (°)	Azi (°)	TVD (usft)	SS (usft)	+N/-S (usft)	+E/-W (usft)	Vertical Section (usft)	Dogleg Rate (°/100usft)	Build Rate (°/100usft)	Turn Rate (°/100usft)
<b>SHL: 1409ft FSL &amp; 606ft FWL of Sec 21</b>										
0.0	0.00	0.00	0.0	5,005.00	0.0	0.0	0.0	0.00	0.00	0.00
100.0	0.00	0.00	100.0	4,905.00	0.0	0.0	0.0	0.00	0.00	0.00
200.0	0.00	0.00	200.0	4,805.00	0.0	0.0	0.0	0.00	0.00	0.00
300.0	0.00	0.00	300.0	4,705.00	0.0	0.0	0.0	0.00	0.00	0.00
400.0	0.00	0.00	400.0	4,605.00	0.0	0.0	0.0	0.00	0.00	0.00
500.0	0.00	0.00	500.0	4,505.00	0.0	0.0	0.0	0.00	0.00	0.00
<b>START NUDGE (2°/100ft BUR)</b>										
600.0	0.00	0.00	600.0	4,405.00	0.0	0.0	0.0	0.00	0.00	0.00
700.0	2.00	246.22	700.0	4,305.02	-0.7	-1.6	-1.6	2.00	2.00	0.00
800.0	4.00	246.22	799.8	4,205.16	-2.8	-6.4	-6.2	2.00	2.00	0.00
900.0	6.00	246.22	899.5	4,105.55	-6.3	-14.4	-13.9	2.00	2.00	0.00
1,000.0	8.00	246.22	998.7	4,006.30	-11.2	-25.5	-24.8	2.00	2.00	0.00
1,100.0	10.00	246.22	1,097.5	3,907.53	-17.6	-39.8	-38.7	2.00	2.00	0.00
1,200.0	12.00	246.22	1,195.6	3,809.38	-25.3	-57.3	-55.6	2.00	2.00	0.00
<b>EOB TO 12° INC</b>										
1,200.1	12.00	246.22	1,195.7	3,809.32	-25.3	-57.3	-55.6	1.95	1.95	0.00
1,300.0	12.00	246.22	1,293.4	3,711.56	-33.6	-76.3	-74.1	0.00	0.00	0.00
1,400.0	12.00	246.22	1,391.3	3,613.75	-42.0	-95.3	-92.6	0.00	0.00	0.00
1,500.0	12.00	246.22	1,489.1	3,515.93	-50.4	-114.4	-111.0	0.00	0.00	0.00
1,600.0	12.00	246.22	1,586.9	3,418.12	-58.8	-133.4	-129.5	0.00	0.00	0.00
1,700.0	12.00	246.22	1,684.7	3,320.31	-67.2	-152.4	-148.0	0.00	0.00	0.00
1,800.0	12.00	246.22	1,782.5	3,222.49	-75.6	-171.4	-166.5	0.00	0.00	0.00
1,900.0	12.00	246.22	1,880.3	3,124.68	-83.9	-190.5	-184.9	0.00	0.00	0.00
2,000.0	12.00	246.22	1,978.1	3,026.86	-92.3	-209.5	-203.4	0.00	0.00	0.00
2,100.0	12.00	246.22	2,076.0	2,929.05	-100.7	-228.5	-221.9	0.00	0.00	0.00
2,200.0	12.00	246.22	2,173.8	2,831.23	-109.1	-247.6	-240.4	0.00	0.00	0.00
2,300.0	12.00	246.22	2,271.6	2,733.42	-117.5	-266.6	-258.8	0.00	0.00	0.00
2,400.0	12.00	246.22	2,369.4	2,635.60	-125.9	-285.6	-277.3	0.00	0.00	0.00
2,500.0	12.00	246.22	2,467.2	2,537.79	-134.3	-304.6	-295.8	0.00	0.00	0.00
2,600.0	12.00	246.22	2,565.0	2,439.98	-142.6	-323.7	-314.3	0.00	0.00	0.00
2,700.0	12.00	246.22	2,662.8	2,342.16	-151.0	-342.7	-332.7	0.00	0.00	0.00
2,800.0	12.00	246.22	2,760.7	2,244.35	-159.4	-361.7	-351.2	0.00	0.00	0.00
2,900.0	12.00	246.22	2,858.5	2,146.53	-167.8	-380.7	-369.7	0.00	0.00	0.00
3,000.0	12.00	246.22	2,956.3	2,048.72	-176.2	-399.8	-388.2	0.00	0.00	0.00
3,100.0	12.00	246.22	3,054.1	1,950.90	-184.6	-418.8	-406.6	0.00	0.00	0.00
3,200.0	12.00	246.22	3,151.9	1,853.09	-193.0	-437.8	-425.1	0.00	0.00	0.00
3,300.0	12.00	246.22	3,249.7	1,755.28	-201.3	-456.9	-443.6	0.00	0.00	0.00
3,400.0	12.00	246.22	3,347.5	1,657.46	-209.7	-475.9	-462.1	0.00	0.00	0.00
3,500.0	12.00	246.22	3,445.4	1,559.65	-218.1	-494.9	-480.5	0.00	0.00	0.00
3,600.0	12.00	246.22	3,543.2	1,461.83	-226.5	-513.9	-499.0	0.00	0.00	0.00
<b>PARKMAN</b>										
3,607.0	12.00	246.22	3,550.0	1,455.00	-227.1	-515.3	-500.3	0.00	0.00	0.00
3,700.0	12.00	246.22	3,641.0	1,364.02	-234.9	-533.0	-517.5	0.00	0.00	0.00
3,800.0	12.00	246.22	3,738.8	1,266.20	-243.3	-552.0	-536.0	0.00	0.00	0.00
3,900.0	12.00	246.22	3,836.6	1,168.39	-251.7	-571.0	-554.4	0.00	0.00	0.00
4,000.0	12.00	246.22	3,934.4	1,070.57	-260.0	-590.0	-572.9	0.00	0.00	0.00
4,100.0	12.00	246.22	4,032.2	972.76	-268.4	-609.1	-591.4	0.00	0.00	0.00
4,200.0	12.00	246.22	4,130.1	874.95	-276.8	-628.1	-609.9	0.00	0.00	0.00
4,300.0	12.00	246.22	4,227.9	777.13	-285.2	-647.1	-628.3	0.00	0.00	0.00
<b>END OF TANGENT</b>										
4,378.2	12.00	246.22	4,304.3	700.68	-291.7	-662.0	-642.8	0.00	0.00	0.00
4,400.0	11.56	246.22	4,325.7	679.30	-293.5	-666.1	-646.8	2.00	-2.00	0.00

# Planning Report



<b>Database:</b>	EDM 5000.1 Single User Db	<b>Local Co-ordinate Reference:</b>	Well KITELEY 7
<b>Company:</b>	EXTRACTION OIL & GAS	<b>TVD Reference:</b>	KB-EST @ 5005.0usft
<b>Project:</b>	WELD COUNTY, COLORADO (NAD 83)	<b>MD Reference:</b>	KB-EST @ 5005.0usft
<b>Site:</b>	NW SW SEC. 21 T3N R6W 6th P.M.	<b>North Reference:</b>	True
<b>Well:</b>	KITELEY 7	<b>Survey Calculation Method:</b>	Minimum Curvature
<b>Wellbore:</b>	ORIGINAL WELLBORE		
<b>Design:</b>	PROPOSAL #1		

## Planned Survey

MD (usft)	Inc (°)	Azi (°)	TVD (usft)	SS (usft)	+N/-S (usft)	+E/-W (usft)	Vertical Section (usft)	Dogleg Rate (°/100usft)	Build Rate (°/100usft)	Turn Rate (°/100usft)
<b>SUSSEX</b>										
4,435.0	10.86	246.22	4,360.0	645.00	-296.3	-672.3	-652.8	2.00	-2.00	0.00
4,500.0	9.56	246.22	4,424.0	581.00	-300.9	-682.9	-663.0	2.00	-2.00	0.00
4,600.0	7.56	246.22	4,522.9	482.12	-306.9	-696.5	-676.3	2.00	-2.00	0.00
<b>SHANNON</b>										
4,679.7	5.97	246.22	4,602.0	403.00	-310.7	-705.1	-684.6	2.00	-2.00	0.00
4,700.0	5.56	246.22	4,622.2	382.78	-311.6	-706.9	-686.4	2.00	-2.00	0.00
4,800.0	3.56	246.22	4,721.9	283.10	-314.8	-714.2	-693.5	2.00	-2.00	0.00
4,900.0	1.56	246.22	4,821.8	183.21	-316.6	-718.3	-697.5	2.00	-2.00	0.00
<b>EOD TO VERTICAL</b>										
4,978.2	0.00	0.00	4,900.0	105.00	-317.0	-719.3	-698.4	2.00	-2.00	0.00
5,000.0	0.00	0.00	4,921.8	83.22	-317.0	-719.3	-698.4	0.00	0.00	0.00
5,100.0	0.00	0.00	5,021.8	-16.78	-317.0	-719.3	-698.4	0.00	0.00	0.00
5,200.0	0.00	0.00	5,121.8	-116.78	-317.0	-719.3	-698.4	0.00	0.00	0.00
5,300.0	0.00	0.00	5,221.8	-216.78	-317.0	-719.3	-698.4	0.00	0.00	0.00
5,400.0	0.00	0.00	5,321.8	-316.78	-317.0	-719.3	-698.4	0.00	0.00	0.00
5,500.0	0.00	0.00	5,421.8	-416.78	-317.0	-719.3	-698.4	0.00	0.00	0.00
5,600.0	0.00	0.00	5,521.8	-516.78	-317.0	-719.3	-698.4	0.00	0.00	0.00
5,700.0	0.00	0.00	5,621.8	-616.78	-317.0	-719.3	-698.4	0.00	0.00	0.00
5,800.0	0.00	0.00	5,721.8	-716.78	-317.0	-719.3	-698.4	0.00	0.00	0.00
5,900.0	0.00	0.00	5,821.8	-816.78	-317.0	-719.3	-698.4	0.00	0.00	0.00
6,000.0	0.00	0.00	5,921.8	-916.78	-317.0	-719.3	-698.4	0.00	0.00	0.00
6,100.0	0.00	0.00	6,021.8	-1,016.78	-317.0	-719.3	-698.4	0.00	0.00	0.00
6,200.0	0.00	0.00	6,121.8	-1,116.78	-317.0	-719.3	-698.4	0.00	0.00	0.00
6,300.0	0.00	0.00	6,221.8	-1,216.78	-317.0	-719.3	-698.4	0.00	0.00	0.00
6,400.0	0.00	0.00	6,321.8	-1,316.78	-317.0	-719.3	-698.4	0.00	0.00	0.00
6,500.0	0.00	0.00	6,421.8	-1,416.78	-317.0	-719.3	-698.4	0.00	0.00	0.00
6,600.0	0.00	0.00	6,521.8	-1,516.78	-317.0	-719.3	-698.4	0.00	0.00	0.00
<b>KOP (10°/100ft BUR)</b>										
6,601.2	0.00	0.00	6,523.0	-1,518.00	-317.0	-719.3	-698.4	0.00	0.00	0.00
6,700.0	9.88	89.34	6,621.3	-1,616.29	-316.9	-710.8	-690.0	10.00	10.00	0.00
6,800.0	19.88	89.34	6,717.8	-1,712.82	-316.6	-685.2	-664.4	10.00	10.00	0.00
6,900.0	29.88	89.34	6,808.4	-1,803.42	-316.1	-643.2	-622.5	10.00	10.00	0.00
7,000.0	39.88	89.34	6,890.4	-1,885.36	-315.5	-586.0	-565.5	10.00	10.00	0.00
<b>SHARON SPRINGS</b>										
7,048.2	44.70	89.34	6,926.0	-1,921.00	-315.1	-553.6	-533.2	10.00	10.00	0.00
7,100.0	49.88	89.34	6,961.1	-1,956.13	-314.7	-515.6	-495.2	10.00	10.00	0.00
<b>NIOBRARA</b>										
7,107.6	50.64	89.34	6,966.0	-1,961.00	-314.6	-509.7	-489.4	10.00	10.00	0.00
7,200.0	59.88	89.34	7,018.6	-2,013.59	-313.7	-433.9	-413.8	10.00	10.00	0.00
7,300.0	69.88	89.34	7,061.0	-2,055.99	-312.7	-343.5	-323.6	10.00	10.00	0.00
7,400.0	79.88	89.34	7,087.0	-2,082.04	-311.6	-247.1	-227.4	10.00	10.00	0.00
7,500.0	89.88	89.34	7,096.0	-2,090.96	-310.4	-147.6	-128.2	10.00	10.00	0.00
<b>HZ LP: 1100ft FSL &amp; 460ft FWL of Sec 21</b>										
7,501.2	90.00	89.34	7,096.0	-2,090.96	-310.4	-146.4	-127.0	10.00	10.00	0.00
7,600.0	90.00	89.34	7,096.0	-2,090.96	-309.3	-47.6	-28.5	0.00	0.00	0.00
7,700.0	90.00	89.34	7,096.0	-2,090.96	-308.1	52.4	71.3	0.00	0.00	0.00
7,800.0	90.00	89.34	7,096.0	-2,090.96	-307.0	152.4	171.0	0.00	0.00	0.00
7,900.0	90.00	89.34	7,096.0	-2,090.96	-305.8	252.4	270.7	0.00	0.00	0.00
8,000.0	90.00	89.34	7,096.0	-2,090.96	-304.7	352.4	370.5	0.00	0.00	0.00
8,100.0	90.00	89.34	7,096.0	-2,090.96	-303.5	452.4	470.2	0.00	0.00	0.00
8,200.0	90.00	89.34	7,096.0	-2,090.96	-302.4	552.4	569.9	0.00	0.00	0.00
8,300.0	90.00	89.34	7,096.0	-2,090.96	-301.2	652.3	669.7	0.00	0.00	0.00



<b>Database:</b>	EDM 5000.1 Single User Db	<b>Local Co-ordinate Reference:</b>	Well KITELEY 7
<b>Company:</b>	EXTRACTION OIL & GAS	<b>TVD Reference:</b>	KB-EST @ 5005.0usft
<b>Project:</b>	WELD COUNTY, COLORADO (NAD 83)	<b>MD Reference:</b>	KB-EST @ 5005.0usft
<b>Site:</b>	NW SW SEC. 21 T3N R68W 6th P.M.	<b>North Reference:</b>	True
<b>Well:</b>	KITELEY 7	<b>Survey Calculation Method:</b>	Minimum Curvature
<b>Wellbore:</b>	ORIGINAL WELLBORE		
<b>Design:</b>	PROPOSAL #1		

## Planned Survey

MD (usft)	Inc (°)	Azi (°)	TVD (usft)	SS (usft)	+N/-S (usft)	+E/-W (usft)	Vertical Section (usft)	Dogleg Rate (°/100usft)	Build Rate (°/100usft)	Turn Rate (°/100usft)
8,400.0	90.00	89.34	7,096.0	-2,090.96	-300.0	752.3	769.4	0.00	0.00	0.00
8,500.0	90.00	89.34	7,096.0	-2,090.96	-298.9	852.3	869.1	0.00	0.00	0.00
8,600.0	90.00	89.34	7,096.0	-2,090.96	-297.7	952.3	968.9	0.00	0.00	0.00
8,700.0	90.00	89.34	7,096.0	-2,090.96	-296.6	1,052.3	1,068.6	0.00	0.00	0.00
8,800.0	90.00	89.34	7,096.0	-2,090.96	-295.4	1,152.3	1,168.3	0.00	0.00	0.00
8,900.0	90.00	89.34	7,096.0	-2,090.96	-294.3	1,252.3	1,268.0	0.00	0.00	0.00
9,000.0	90.00	89.34	7,096.0	-2,090.96	-293.1	1,352.3	1,367.8	0.00	0.00	0.00
9,100.0	90.00	89.34	7,096.0	-2,090.96	-292.0	1,452.3	1,467.5	0.00	0.00	0.00
9,200.0	90.00	89.34	7,096.0	-2,090.96	-290.8	1,552.3	1,567.2	0.00	0.00	0.00
9,300.0	90.00	89.34	7,096.0	-2,090.96	-289.7	1,652.3	1,667.0	0.00	0.00	0.00
9,400.0	90.00	89.34	7,096.0	-2,090.96	-288.5	1,752.3	1,766.7	0.00	0.00	0.00
9,500.0	90.00	89.34	7,096.0	-2,090.96	-287.4	1,852.3	1,866.4	0.00	0.00	0.00
9,600.0	90.00	89.34	7,096.0	-2,090.96	-286.2	1,952.3	1,966.2	0.00	0.00	0.00
9,700.0	90.00	89.34	7,096.0	-2,090.96	-285.1	2,052.3	2,065.9	0.00	0.00	0.00
9,800.0	90.00	89.34	7,096.0	-2,090.96	-283.9	2,152.2	2,165.6	0.00	0.00	0.00
9,900.0	90.00	89.34	7,096.0	-2,090.96	-282.8	2,252.2	2,265.4	0.00	0.00	0.00
10,000.0	90.00	89.34	7,096.0	-2,090.96	-281.6	2,352.2	2,365.1	0.00	0.00	0.00
10,100.0	90.00	89.34	7,096.0	-2,090.96	-280.5	2,452.2	2,464.8	0.00	0.00	0.00
10,200.0	90.00	89.34	7,096.0	-2,090.96	-279.3	2,552.2	2,564.6	0.00	0.00	0.00
10,300.0	90.00	89.34	7,096.0	-2,090.96	-278.2	2,652.2	2,664.3	0.00	0.00	0.00
10,400.0	90.00	89.34	7,096.0	-2,090.96	-277.0	2,752.2	2,764.0	0.00	0.00	0.00
10,500.0	90.00	89.34	7,096.0	-2,090.96	-275.9	2,852.2	2,863.8	0.00	0.00	0.00
10,600.0	90.00	89.34	7,096.0	-2,090.96	-274.7	2,952.2	2,963.5	0.00	0.00	0.00
10,700.0	90.00	89.34	7,096.0	-2,090.96	-273.6	3,052.2	3,063.2	0.00	0.00	0.00
10,800.0	90.00	89.34	7,096.0	-2,090.96	-272.4	3,152.2	3,163.0	0.00	0.00	0.00
10,900.0	90.00	89.34	7,096.0	-2,090.96	-271.2	3,252.2	3,262.7	0.00	0.00	0.00
11,000.0	90.00	89.34	7,096.0	-2,090.96	-270.1	3,352.2	3,362.4	0.00	0.00	0.00
11,100.0	90.00	89.34	7,096.0	-2,090.96	-268.9	3,452.2	3,462.2	0.00	0.00	0.00
11,200.0	90.00	89.34	7,096.0	-2,090.96	-267.8	3,552.2	3,561.9	0.00	0.00	0.00
11,300.0	90.00	89.34	7,096.0	-2,090.96	-266.6	3,652.1	3,661.6	0.00	0.00	0.00
11,400.0	90.00	89.34	7,096.0	-2,090.96	-265.5	3,752.1	3,761.4	0.00	0.00	0.00
11,500.0	90.00	89.34	7,096.0	-2,090.96	-264.3	3,852.1	3,861.1	0.00	0.00	0.00
11,600.0	90.00	89.34	7,096.0	-2,090.96	-263.2	3,952.1	3,960.8	0.00	0.00	0.00
11,700.0	90.00	89.34	7,096.0	-2,090.96	-262.0	4,052.1	4,060.6	0.00	0.00	0.00
11,800.0	90.00	89.34	7,096.0	-2,090.96	-260.9	4,152.1	4,160.3	0.00	0.00	0.00
<b>BHL: 1100ft FSL &amp; 460ft FEL of Sec 21</b>										
<b>11,865.3</b>	<b>90.00</b>	<b>89.34</b>	<b>7,096.0</b>	<b>-2,091.00</b>	<b>-260.1</b>	<b>4,217.4</b>	<b>4,225.4</b>	<b>0.00</b>	<b>0.00</b>	<b>0.00</b>

## Formations

MD (usft)	TVD (usft)	Name	Lithology	Dip (°)	Dip Direction (°)
3,607.0	3,550.0	PARKMAN			
4,435.0	4,360.0	SUSSEX			
4,679.7	4,602.0	SHANNON			
7,048.2	6,926.0	SHARON SPRINGS			
7,107.6	6,966.0	NIOBRARA			

<b>Database:</b>	EDM 5000.1 Single User Db	<b>Local Co-ordinate Reference:</b>	Well KITELEY 7
<b>Company:</b>	EXTRACTION OIL & GAS	<b>TVD Reference:</b>	KB-EST @ 5005.0usft
<b>Project:</b>	WELD COUNTY, COLORADO (NAD 83)	<b>MD Reference:</b>	KB-EST @ 5005.0usft
<b>Site:</b>	NW SW SEC. 21 T3N R68W 6th P.M.	<b>North Reference:</b>	True
<b>Well:</b>	KITELEY 7	<b>Survey Calculation Method:</b>	Minimum Curvature
<b>Wellbore:</b>	ORIGINAL WELLBORE		
<b>Design:</b>	PROPOSAL #1		

## Plan Annotations

MD (usft)	TVD (usft)	Local Coordinates		Comment
		+N/-S (usft)	+E/-W (usft)	
0.0	0.0	0.0	0.0	SHL: 1409ft FSL & 606ft FWL of Sec 21
600.0	600.0	0.0	0.0	START NUDGE (2°/100ft BUR)
1,200.1	1,195.7	-25.3	-57.3	EOB TO 12° INC
4,378.2	4,304.3	-291.7	-662.0	END OF TANGENT
4,978.2	4,900.0	-317.0	-719.3	EOD TO VERTICAL
6,601.2	6,523.0	-317.0	-719.3	KOP (10°/100ft BUR)
7,501.2	7,096.0	-310.4	-146.4	HZ LP: 1100ft FSL & 460ft FWL of Sec 21
11,865.3	7,096.0	-260.1	4,217.4	BHL: 1100ft FSL & 460ft FEL of Sec 21