

EXTRACTION OIL & GAS

WELD COUNTY, COLORADO (NAD 83)

NW SW SEC. 21 T3N R68W 6th P.M.

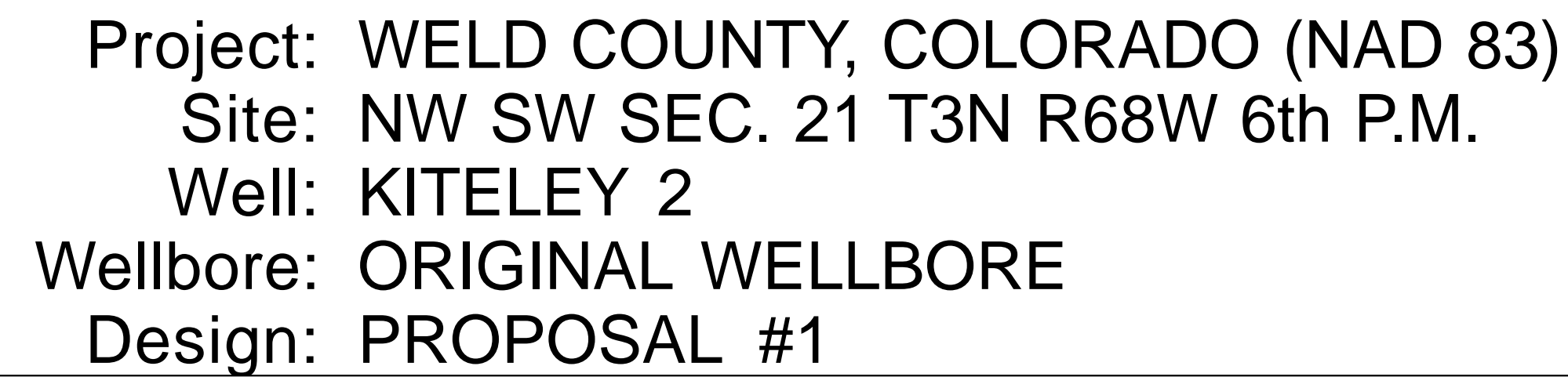
KITELEY 2


ORIGINAL WELLBORE

24 August, 2016

Plan: PROPOSAL #1



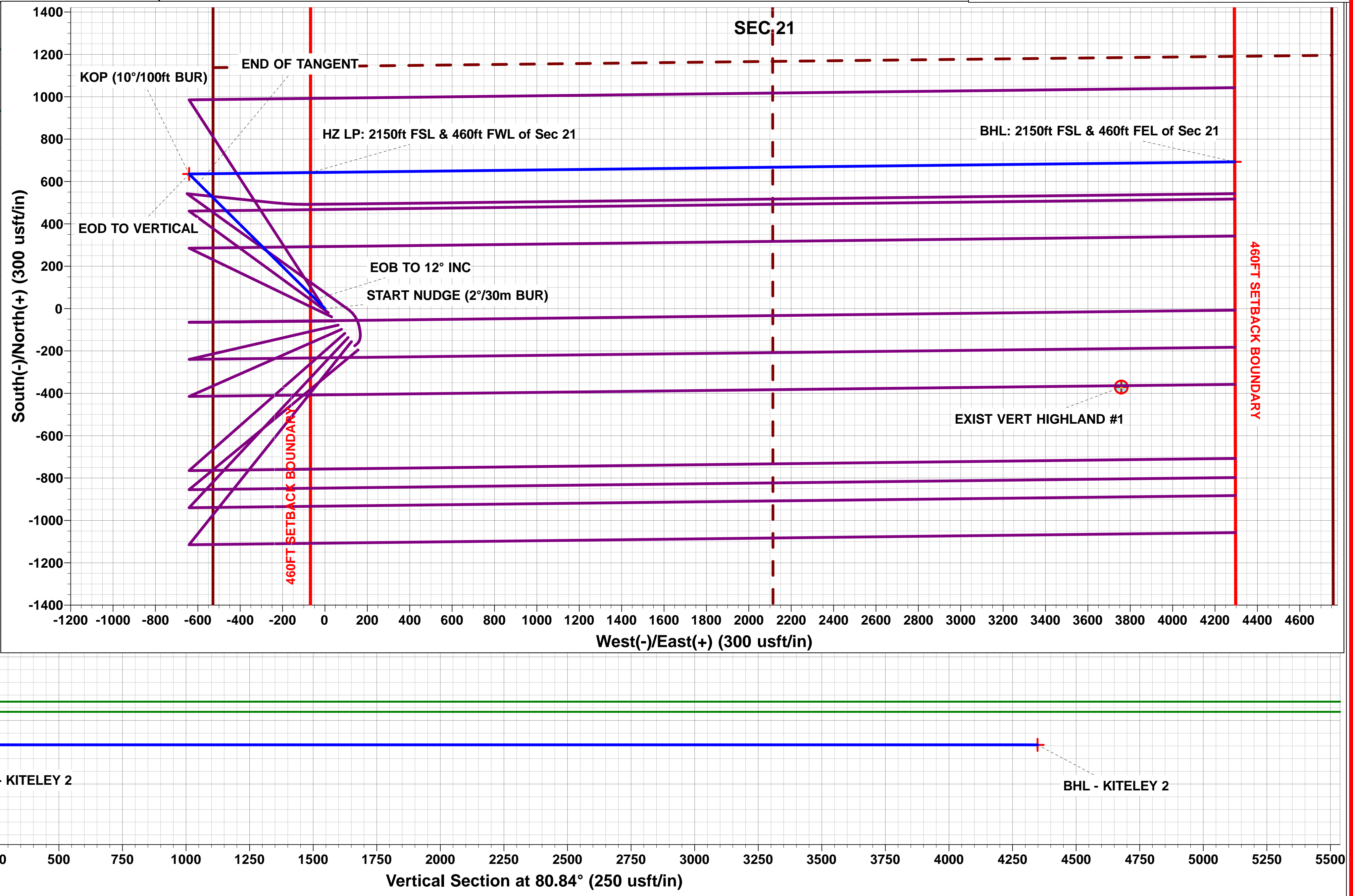
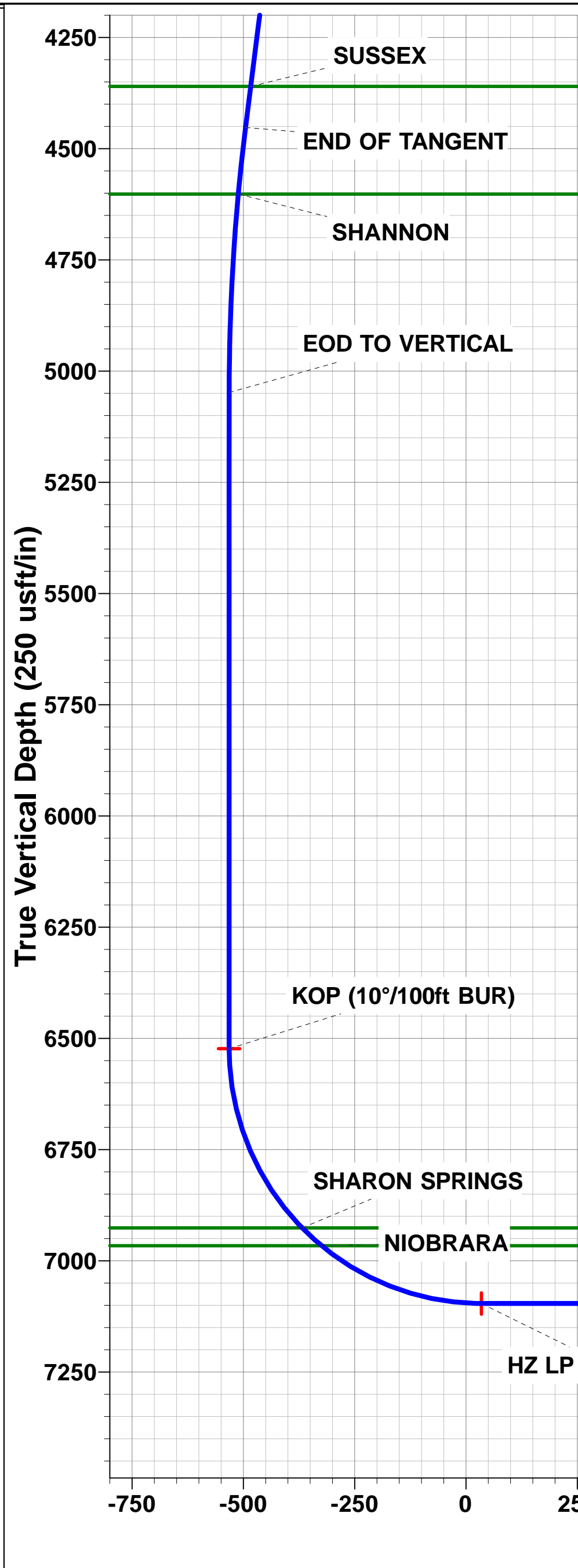


<p>PROPOSED LOCAL COORDINATES</p>	
<p>SHL: 1507ft FSL & 528ft FWL of Sec 21</p>	
<p>LP: 2150ft FSL & 460ft FWL of Sec 21</p>	
<p>BHL: 2150ft FSL & 460ft FEL of Sec 21</p>	
	<p>Azimuths to True North Magnetic North: 8.41°</p> <p>Magnetic Field Strength: 52356.9snT Dip Angle: 66.68° Date: 24/08/2016 Model: IGRF2015</p>

The plot displays the wellbore trajectory in a vertical section. The Y-axis represents True Vertical Depth (550 usft/in) from 0 to 6500. The X-axis represents the Vertical Section at 314.74° (550 usft/in) from 0 to 3500. The blue curve shows the wellbore path, which starts at the surface (0 depth) and descends. Key points and labels include:

- START NUDGE (2°/30m BUR)**: Located near the surface.
- EOB TO 12° INC**: End of Build to 12° inclination.
- PARKMAN**: A point on the curve at approximately 3500 depth.
- SUSSEX**: A point on the curve at approximately 4000 depth.
- END OF TANGENT**: The point where the wellbore becomes vertical, at approximately 4600 depth.
- SHANNON**: A point on the curve at approximately 4600 depth.
- EOD TO VERTICAL**: End of Drilling to Vertical.
- KOP (10°/100ft BUR)**: Kick-off Point, marked with a red dot at approximately 6500 depth.

Horizontal green lines are drawn at depths of 3500, 4350, and 4600. A red dot marks the KOP at approximately 6500 depth.



Planning Report



Database:	EDM 5000.1 Single User Db	Local Co-ordinate Reference:	Well KITELEY 2
Company:	EXTRACTION OIL & GAS	TVD Reference:	KB-EST @ 5007.0usft (Original Well Elev)
Project:	WELD COUNTY, COLORADO (NAD 83)	MD Reference:	KB-EST @ 5007.0usft (Original Well Elev)
Site:	NW SW SEC. 21 T3N R68W 6th P.M.	North Reference:	True
Well:	KITELEY 2	Survey Calculation Method:	Minimum Curvature
Wellbore:	ORIGINAL WELLBORE		
Design:	PROPOSAL #1		

Project	WELD COUNTY, COLORADO (NAD 83)		
Map System:	US State Plane 1983	System Datum:	Mean Sea Level
Geo Datum:	North American Datum 1983		
Map Zone:	Colorado Northern Zone		Using geodetic scale factor

Site	NW SW SEC. 21 T3N R68W 6th P.M.		
Site Position:		Northing:	1,319,048.75 usft
From:	Lat/Long	Easting:	3,135,328.07 usft
Position Uncertainty:	0.0 usft	Slot Radius:	1.10000ft
		Latitude:	40.208171
		Longitude:	-105.015469
		Grid Convergence:	0.31 °

Well	KITELEY 2		
Well Position	+N/-S	-19.7 usft	Northing:
	+E/-W	15.6 usft	Easting:
Position Uncertainty		0.0 usft	Wellhead Elevation:
			Latitude:
			Longitude:
			Ground Level:

Wellbore	ORIGINAL WELLBORE				
Magnetics	Model Name	Sample Date	Declination (°)	Dip Angle (°)	Field Strength (nT)
	IGRF2015	24/08/2016	8.41	66.68	52,357

Design	PROPOSAL #1			
Audit Notes:				
Version:	Phase:	PROTOTYPE	Tie On Depth:	0.0
Vertical Section:	Depth From (TVD) (usft)	+N/-S (usft)	+E/-W (usft)	Direction (°)
	7,096.0	0.0	0.0	80.84

Plan Sections											
MD (usft)	Inc (°)	Azi (°)	Vertical Depth	SS (usft)	+N/-S (usft)	+E/-W (usft)	Dogleg Rate (°/100usf)	Build Rate (°/100usf)	Turn Rate (°/100usf)	TFO (°)	Target
0.0	0.00	0.00	0.0	-5,007.0	0.0	0.0	0.00	0.00	0.00	0.00	
200.0	0.00	0.00	200.0	-4,807.0	0.0	0.0	0.00	0.00	0.00	0.00	
800.0	12.00	314.74	795.6	-4,211.4	44.1	-44.5	2.00	2.00	0.00	314.74	
4,538.4	12.00	314.74	4,452.4	-554.6	591.1	-596.6	0.00	0.00	0.00	0.00	
5,138.5	0.00	0.00	5,048.0	41.0	635.2	-641.1	2.00	-2.00	0.00	180.00	
6,613.5	0.00	0.00	6,523.0	1,516.0	635.2	-641.1	0.00	0.00	0.00	0.00	KOP - KITELEY 2
7,513.5	90.00	89.33	7,096.0	2,089.0	641.9	-68.2	10.00	10.00	0.00	89.33	
11,875.1	90.00	89.34	7,096.0	2,089.0	692.5	4,293.2	0.00	0.00	0.00	96.81	BHL - KITELEY 2

Database:	EDM 5000.1 Single User Db	Local Co-ordinate Reference:	Well KITELEY 2
Company:	EXTRACTION OIL & GAS	TVD Reference:	KB-EST @ 5007.0usft (Original Well Elev)
Project:	WELD COUNTY, COLORADO (NAD 83)	MD Reference:	KB-EST @ 5007.0usft (Original Well Elev)
Site:	NW SW SEC. 21 T3N R68W 6th P.M.	North Reference:	True
Well:	KITELEY 2	Survey Calculation Method:	Minimum Curvature
Wellbore:	ORIGINAL WELLBORE		
Design:	PROPOSAL #1		

Planned Survey

MD (usft)	Inc (°)	Azi (°)	TVD (usft)	SS (usft)	+N/-S (usft)	+E/-W (usft)	Vertical Section (usft)	Dogleg Rate (°/100usft)	Build Rate (°/100usft)	Turn Rate (°/100usft)
SHL: 1507ft FSL & 528ft FWL of Sec 21										
0.0	0.00	0.00	0.0	5,007.00	0.0	0.0	0.0	0.00	0.00	0.00
100.0	0.00	0.00	100.0	4,907.00	0.0	0.0	0.0	0.00	0.00	0.00
START NUDGE (2°/30m BUR)										
200.0	0.00	0.00	200.0	4,807.00	0.0	0.0	0.0	0.00	0.00	0.00
300.0	2.00	314.74	300.0	4,707.02	1.2	-1.2	-1.0	2.00	2.00	0.00
400.0	4.00	314.74	399.8	4,607.16	4.9	-5.0	-4.1	2.00	2.00	0.00
500.0	6.00	314.74	499.5	4,507.55	11.0	-11.1	-9.2	2.00	2.00	0.00
600.0	8.00	314.74	598.7	4,408.30	19.6	-19.8	-16.4	2.00	2.00	0.00
700.0	10.00	314.74	697.5	4,309.53	30.6	-30.9	-25.6	2.00	2.00	0.00
EOB TO 12° INC										
800.0	12.00	314.74	795.6	4,211.36	44.1	-44.5	-36.9	2.00	2.00	0.00
900.0	12.00	314.74	893.4	4,113.56	58.7	-59.2	-49.1	0.00	0.00	0.00
1,000.0	12.00	314.74	991.3	4,015.75	73.3	-74.0	-61.4	0.00	0.00	0.00
1,100.0	12.00	314.74	1,089.1	3,917.93	88.0	-88.8	-73.6	0.00	0.00	0.00
1,200.0	12.00	314.74	1,186.9	3,820.12	102.6	-103.5	-85.9	0.00	0.00	0.00
1,300.0	12.00	314.74	1,284.7	3,722.30	117.2	-118.3	-98.1	0.00	0.00	0.00
1,400.0	12.00	314.74	1,382.5	3,624.49	131.9	-133.1	-110.4	0.00	0.00	0.00
1,500.0	12.00	314.74	1,480.3	3,526.67	146.5	-147.9	-122.6	0.00	0.00	0.00
1,600.0	12.00	314.74	1,578.1	3,428.86	161.1	-162.6	-134.9	0.00	0.00	0.00
1,700.0	12.00	314.74	1,676.0	3,331.04	175.8	-177.4	-147.1	0.00	0.00	0.00
1,800.0	12.00	314.74	1,773.8	3,233.23	190.4	-192.2	-159.4	0.00	0.00	0.00
1,900.0	12.00	314.74	1,871.6	3,135.42	205.0	-206.9	-171.6	0.00	0.00	0.00
2,000.0	12.00	314.74	1,969.4	3,037.60	219.7	-221.7	-183.9	0.00	0.00	0.00
2,100.0	12.00	314.74	2,067.2	2,939.79	234.3	-236.5	-196.1	0.00	0.00	0.00
2,200.0	12.00	314.74	2,165.0	2,841.97	248.9	-251.2	-208.4	0.00	0.00	0.00
2,300.0	12.00	314.74	2,262.8	2,744.16	263.6	-266.0	-220.6	0.00	0.00	0.00
2,400.0	12.00	314.74	2,360.7	2,646.34	278.2	-280.8	-232.9	0.00	0.00	0.00
2,500.0	12.00	314.74	2,458.5	2,548.53	292.8	-295.6	-245.1	0.00	0.00	0.00
2,600.0	12.00	314.74	2,556.3	2,450.71	307.5	-310.3	-257.4	0.00	0.00	0.00
2,700.0	12.00	314.74	2,654.1	2,352.90	322.1	-325.1	-269.6	0.00	0.00	0.00
2,800.0	12.00	314.74	2,751.9	2,255.08	336.7	-339.9	-281.9	0.00	0.00	0.00
2,900.0	12.00	314.74	2,849.7	2,157.27	351.4	-354.6	-294.2	0.00	0.00	0.00
3,000.0	12.00	314.74	2,947.5	2,059.45	366.0	-369.4	-306.4	0.00	0.00	0.00
3,100.0	12.00	314.74	3,045.4	1,961.64	380.6	-384.2	-318.7	0.00	0.00	0.00
3,200.0	12.00	314.74	3,143.2	1,863.82	395.3	-398.9	-330.9	0.00	0.00	0.00
3,300.0	12.00	314.74	3,241.0	1,766.01	409.9	-413.7	-343.2	0.00	0.00	0.00
3,400.0	12.00	314.74	3,338.8	1,668.20	424.5	-428.5	-355.4	0.00	0.00	0.00
3,500.0	12.00	314.74	3,436.6	1,570.38	439.2	-443.3	-367.7	0.00	0.00	0.00
3,600.0	12.00	314.74	3,534.4	1,472.57	453.8	-458.0	-379.9	0.00	0.00	0.00
PARKMAN										
3,615.9	12.00	314.74	3,550.0	1,457.00	456.1	-460.4	-381.9	0.00	0.00	0.00
3,700.0	12.00	314.74	3,632.2	1,374.75	468.4	-472.8	-392.2	0.00	0.00	0.00
3,800.0	12.00	314.74	3,730.1	1,276.94	483.1	-487.6	-404.4	0.00	0.00	0.00
3,900.0	12.00	314.74	3,827.9	1,179.12	497.7	-502.3	-416.7	0.00	0.00	0.00
4,000.0	12.00	314.74	3,925.7	1,081.31	512.3	-517.1	-428.9	0.00	0.00	0.00
4,100.0	12.00	314.74	4,023.5	983.49	527.0	-531.9	-441.2	0.00	0.00	0.00
4,200.0	12.00	314.74	4,121.3	885.68	541.6	-546.6	-453.4	0.00	0.00	0.00
4,300.0	12.00	314.74	4,219.1	787.86	556.2	-561.4	-465.7	0.00	0.00	0.00
4,400.0	12.00	314.74	4,317.0	690.05	570.9	-576.2	-477.9	0.00	0.00	0.00
SUSSEX										
4,444.0	12.00	314.74	4,360.0	647.00	577.3	-582.7	-483.3	0.00	0.00	0.00
4,500.0	12.00	314.74	4,414.8	592.23	585.5	-590.9	-490.2	0.00	0.00	0.00

Database:	EDM 5000.1 Single User Db	Local Co-ordinate Reference:	Well KITELEY 2
Company:	EXTRACTION OIL & GAS	TVD Reference:	KB-EST @ 5007.0usft (Original Well Elev)
Project:	WELD COUNTY, COLORADO (NAD 83)	MD Reference:	KB-EST @ 5007.0usft (Original Well Elev)
Site:	NW SW SEC. 21 T3N R6W 6th P.M.	North Reference:	True
Well:	KITELEY 2	Survey Calculation Method:	Minimum Curvature
Wellbore:	ORIGINAL WELLBORE		
Design:	PROPOSAL #1		

Planned Survey

MD (usft)	Inc (°)	Azi (°)	TVD (usft)	SS (usft)	+N/-S (usft)	+E/-W (usft)	Vertical Section (usft)	Dogleg Rate (°/100usft)	Build Rate (°/100usft)	Turn Rate (°/100usft)
END OF TANGENT										
4,538.4	12.00	314.74	4,452.4	554.64	591.1	-596.6	-494.9	0.00	0.00	0.00
4,600.0	10.77	314.74	4,512.7	494.29	599.7	-605.3	-502.0	2.00	-2.00	0.00
SHANNON										
4,690.6	8.96	314.74	4,602.0	405.00	610.6	-616.3	-511.2	2.00	-2.00	0.00
4,700.0	8.77	314.74	4,611.3	395.74	611.6	-617.3	-512.0	2.00	-2.00	0.00
4,800.0	6.77	314.74	4,710.3	296.66	621.1	-626.9	-520.0	2.00	-2.00	0.00
4,900.0	4.77	314.74	4,809.8	197.18	628.2	-634.1	-525.9	2.00	-2.00	0.00
5,000.0	2.77	314.74	4,909.6	97.40	632.8	-638.7	-529.8	2.00	-2.00	0.00
5,100.0	0.77	314.74	5,009.5	-2.55	635.0	-640.9	-531.6	2.00	-2.00	0.00
EOD TO VERTICAL										
5,138.5	0.00	0.00	5,048.0	-41.00	635.2	-641.1	-531.8	2.00	-2.00	0.00
5,200.0	0.00	0.00	5,109.5	-102.55	635.2	-641.1	-531.8	0.00	0.00	0.00
5,300.0	0.00	0.00	5,209.5	-202.55	635.2	-641.1	-531.8	0.00	0.00	0.00
5,400.0	0.00	0.00	5,309.5	-302.55	635.2	-641.1	-531.8	0.00	0.00	0.00
5,500.0	0.00	0.00	5,409.5	-402.55	635.2	-641.1	-531.8	0.00	0.00	0.00
5,600.0	0.00	0.00	5,509.5	-502.55	635.2	-641.1	-531.8	0.00	0.00	0.00
5,700.0	0.00	0.00	5,609.5	-602.55	635.2	-641.1	-531.8	0.00	0.00	0.00
5,800.0	0.00	0.00	5,709.5	-702.55	635.2	-641.1	-531.8	0.00	0.00	0.00
5,900.0	0.00	0.00	5,809.5	-802.55	635.2	-641.1	-531.8	0.00	0.00	0.00
6,000.0	0.00	0.00	5,909.5	-902.55	635.2	-641.1	-531.8	0.00	0.00	0.00
6,100.0	0.00	0.00	6,009.5	-1,002.55	635.2	-641.1	-531.8	0.00	0.00	0.00
6,200.0	0.00	0.00	6,109.5	-1,102.55	635.2	-641.1	-531.8	0.00	0.00	0.00
6,300.0	0.00	0.00	6,209.5	-1,202.55	635.2	-641.1	-531.8	0.00	0.00	0.00
6,400.0	0.00	0.00	6,309.5	-1,302.55	635.2	-641.1	-531.8	0.00	0.00	0.00
6,500.0	0.00	0.00	6,409.5	-1,402.55	635.2	-641.1	-531.8	0.00	0.00	0.00
6,600.0	0.00	0.00	6,509.5	-1,502.55	635.2	-641.1	-531.8	0.00	0.00	0.00
KOP (10°/100ft BUR)										
6,613.5	0.00	0.00	6,523.0	-1,516.00	635.2	-641.1	-531.8	0.00	0.00	0.00
6,700.0	8.65	89.33	6,609.2	-1,602.22	635.3	-634.6	-525.3	10.00	10.00	0.00
6,800.0	18.65	89.33	6,706.3	-1,699.27	635.6	-611.0	-502.0	10.00	10.00	0.00
6,900.0	28.65	89.33	6,797.8	-1,790.75	636.0	-570.9	-462.4	10.00	10.00	0.00
7,000.0	38.65	89.33	6,880.9	-1,873.89	636.7	-515.6	-407.6	10.00	10.00	0.00
SHARON SPRINGS										
7,060.4	44.70	89.33	6,926.0	-1,919.00	637.1	-475.4	-367.9	10.00	10.00	0.00
7,100.0	48.65	89.33	6,953.1	-1,946.14	637.5	-446.6	-339.4	10.00	10.00	0.00
NIORARA										
7,119.9	50.64	89.33	6,966.0	-1,959.00	637.7	-431.5	-324.5	10.00	10.00	0.00
7,200.0	58.65	89.33	7,012.3	-2,005.33	638.4	-366.2	-259.9	10.00	10.00	0.00
7,300.0	68.65	89.33	7,056.7	-2,049.66	639.5	-276.7	-171.3	10.00	10.00	0.00
7,400.0	78.65	89.33	7,084.8	-2,077.76	640.6	-180.9	-76.6	10.00	10.00	0.00
7,500.0	88.65	89.33	7,095.8	-2,088.80	641.7	-81.6	21.6	10.00	10.00	0.00
HZ LP: 2150ft FSL & 460ft FWL of Sec 21										
7,513.5	90.00	89.33	7,096.0	-2,088.96	641.9	-68.2	34.9	10.00	10.00	0.00
7,600.0	90.00	89.33	7,096.0	-2,088.96	642.9	18.4	120.5	0.00	0.00	0.00
7,700.0	90.00	89.33	7,096.0	-2,088.96	644.1	118.4	219.4	0.00	0.00	0.00
7,800.0	90.00	89.33	7,096.0	-2,088.96	645.2	218.3	318.3	0.00	0.00	0.00
7,900.0	90.00	89.33	7,096.0	-2,088.96	646.4	318.3	417.2	0.00	0.00	0.00
8,000.0	90.00	89.33	7,096.0	-2,088.96	647.6	418.3	516.1	0.00	0.00	0.00
8,100.0	90.00	89.33	7,096.0	-2,088.96	648.8	518.3	615.0	0.00	0.00	0.00
8,200.0	90.00	89.33	7,096.0	-2,088.96	649.9	618.3	713.9	0.00	0.00	0.00
8,300.0	90.00	89.33	7,096.0	-2,088.96	651.1	718.3	812.8	0.00	0.00	0.00
8,400.0	90.00	89.33	7,096.0	-2,088.96	652.3	818.3	911.7	0.00	0.00	0.00

Database:	EDM 5000.1 Single User Db	Local Co-ordinate Reference:	Well KITELEY 2
Company:	EXTRACTION OIL & GAS	TVD Reference:	KB-EST @ 5007.0usft (Original Well Elev)
Project:	WELD COUNTY, COLORADO (NAD 83)	MD Reference:	KB-EST @ 5007.0usft (Original Well Elev)
Site:	NW SW SEC. 21 T3N R68W 6th P.M.	North Reference:	True
Well:	KITELEY 2	Survey Calculation Method:	Minimum Curvature
Wellbore:	ORIGINAL WELLBORE		
Design:	PROPOSAL #1		

Planned Survey

MD (usft)	Inc (°)	Azi (°)	TVD (usft)	SS (usft)	+N/-S (usft)	+E/-W (usft)	Vertical Section (usft)	Dogleg Rate (°/100usft)	Build Rate (°/100usft)	Turn Rate (°/100usft)
8,500.0	90.00	89.33	7,096.0	-2,088.96	653.4	918.3	1,010.6	0.00	0.00	0.00
8,600.0	90.00	89.33	7,096.0	-2,088.96	654.6	1,018.3	1,109.5	0.00	0.00	0.00
8,700.0	90.00	89.33	7,096.0	-2,088.96	655.7	1,118.3	1,208.4	0.00	0.00	0.00
8,800.0	90.00	89.33	7,096.0	-2,088.96	656.9	1,218.3	1,307.3	0.00	0.00	0.00
8,900.0	90.00	89.33	7,096.0	-2,088.96	658.1	1,318.3	1,406.3	0.00	0.00	0.00
9,000.0	90.00	89.33	7,096.0	-2,088.96	659.2	1,418.3	1,505.2	0.00	0.00	0.00
9,100.0	90.00	89.33	7,096.0	-2,088.96	660.4	1,518.3	1,604.1	0.00	0.00	0.00
9,200.0	90.00	89.33	7,096.0	-2,088.96	661.6	1,618.3	1,703.0	0.00	0.00	0.00
9,300.0	90.00	89.33	7,096.0	-2,088.96	662.7	1,718.2	1,801.9	0.00	0.00	0.00
9,400.0	90.00	89.33	7,096.0	-2,088.97	663.9	1,818.2	1,900.8	0.00	0.00	0.00
9,500.0	90.00	89.33	7,096.0	-2,088.97	665.1	1,918.2	1,999.7	0.00	0.00	0.00
9,600.0	90.00	89.33	7,096.0	-2,088.97	666.2	2,018.2	2,098.6	0.00	0.00	0.00
9,700.0	90.00	89.33	7,096.0	-2,088.97	667.4	2,118.2	2,197.5	0.00	0.00	0.00
9,800.0	90.00	89.33	7,096.0	-2,088.97	668.5	2,218.2	2,296.4	0.00	0.00	0.00
9,900.0	90.00	89.34	7,096.0	-2,088.97	669.7	2,318.2	2,395.3	0.00	0.00	0.00
10,000.0	90.00	89.34	7,096.0	-2,088.97	670.9	2,418.2	2,494.2	0.00	0.00	0.00
10,100.0	90.00	89.34	7,096.0	-2,088.97	672.0	2,518.2	2,593.1	0.00	0.00	0.00
10,200.0	90.00	89.34	7,096.0	-2,088.97	673.2	2,618.2	2,692.0	0.00	0.00	0.00
10,300.0	90.00	89.34	7,096.0	-2,088.98	674.3	2,718.2	2,790.9	0.00	0.00	0.00
10,400.0	90.00	89.34	7,096.0	-2,088.98	675.5	2,818.2	2,889.8	0.00	0.00	0.00
10,500.0	90.00	89.34	7,096.0	-2,088.98	676.7	2,918.2	2,988.7	0.00	0.00	0.00
10,600.0	90.00	89.34	7,096.0	-2,088.98	677.8	3,018.2	3,087.6	0.00	0.00	0.00
10,700.0	90.00	89.34	7,096.0	-2,088.98	679.0	3,118.2	3,186.5	0.00	0.00	0.00
10,800.0	90.00	89.34	7,096.0	-2,088.98	680.1	3,218.1	3,285.4	0.00	0.00	0.00
10,900.0	90.00	89.34	7,096.0	-2,088.98	681.3	3,318.1	3,384.3	0.00	0.00	0.00
11,000.0	90.00	89.34	7,096.0	-2,088.98	682.4	3,418.1	3,483.2	0.00	0.00	0.00
11,100.0	90.00	89.34	7,096.0	-2,088.99	683.6	3,518.1	3,582.1	0.00	0.00	0.00
11,200.0	90.00	89.34	7,096.0	-2,088.99	684.8	3,618.1	3,681.0	0.00	0.00	0.00
11,300.0	90.00	89.34	7,096.0	-2,088.99	685.9	3,718.1	3,779.9	0.00	0.00	0.00
11,400.0	90.00	89.34	7,096.0	-2,088.99	687.1	3,818.1	3,878.8	0.00	0.00	0.00
11,500.0	90.00	89.34	7,096.0	-2,088.99	688.2	3,918.1	3,977.7	0.00	0.00	0.00
11,600.0	90.00	89.34	7,096.0	-2,088.99	689.4	4,018.1	4,076.6	0.00	0.00	0.00
11,700.0	90.00	89.34	7,096.0	-2,089.00	690.5	4,118.1	4,175.5	0.00	0.00	0.00
11,800.0	90.00	89.34	7,096.0	-2,089.00	691.7	4,218.1	4,274.4	0.00	0.00	0.00
BHL: 2150ft FSL & 460ft FEL of Sec 21										
11,875.1	90.00	89.34	7,096.0	-2,089.00	692.5	4,293.2	4,348.7	0.00	0.00	0.00

Formations

MD (usft)	TVD (usft)	Name	Lithology	Dip (°)	Dip Direction (°)
3,615.9	3,550.0	PARKMAN			
4,444.0	4,360.0	SUSSEX			
4,690.6	4,602.0	SHANNON			
7,060.4	6,926.0	SHARON SPRINGS			
7,119.9	6,966.0	NIOBRARA			

Database:	EDM 5000.1 Single User Db	Local Co-ordinate Reference:	Well KITELEY 2
Company:	EXTRACTION OIL & GAS	TVD Reference:	KB-EST @ 5007.0usft (Original Well Elev)
Project:	WELD COUNTY, COLORADO (NAD 83)	MD Reference:	KB-EST @ 5007.0usft (Original Well Elev)
Site:	NW SW SEC. 21 T3N R68W 6th P.M.	North Reference:	True
Well:	KITELEY 2	Survey Calculation Method:	Minimum Curvature
Wellbore:	ORIGINAL WELLBORE		
Design:	PROPOSAL #1		

Plan Annotations

MD (usft)	TVD (usft)	Local Coordinates		Comment
		+N/-S (usft)	+E/-W (usft)	
0.0	0.0	0.0	0.0	SHL: 1507ft FSL & 528ft FWL of Sec 21
200.0	200.0	0.0	0.0	START NUDGE (2°/30m BUR)
800.0	795.6	44.1	-44.5	EOB TO 12° INC
4,538.4	4,452.4	591.1	-596.6	END OF TANGENT
5,138.5	5,048.0	635.2	-641.1	EOD TO VERTICAL
6,613.5	6,523.0	635.2	-641.1	KOP (10°/100ft BUR)
7,513.5	7,096.0	641.9	-68.2	HZ LP: 2150ft FSL & 460ft FWL of Sec 21
11,875.1	7,096.0	692.5	4,293.2	BHL: 2150ft FSL & 460ft FEL of Sec 21