

EXTRACTION OIL & GAS

WELD COUNTY, COLORADO (NAD 83)

NW SW SEC. 21 T3N R68W 6th P.M.

KITELEY 1

ORIGINAL WELLBORE

24 August, 2016

Plan: PROPOSAL #1





Project: WELD COUNTY, COLORADO (NAD 83)
Site: NW SW SEC. 21 T3N R68W 6th P.M.
Well: KITELEY 1
Wellbore: ORIGINAL WELLBORE
Design: PROPOSAL #1

ANNOTATIONS

TVD	MD	Inc	Azi	+N/-S	+E/-W	VSect	Dep	Annotation
0.0	0.0	0.00	0.00	0.0	0.0	0.0	0.0	SHL: 1527ft FSL & 513ft FWL of Sec 21
100.0	100.0	0.00	0.00	0.0	0.0	0.0	0.0	START NUDGE (2°/100ft BUR)
695.8	700.2	12.00	327.07	52.6	-34.1	-21.0	62.6	EOB TO 12° INC
5517.2	5629.4	12.00	327.07	913.0	-591.3	-364.4	1087.8	END OF TANGENT
6113.0	6229.5	0.00	0.00	965.6	-625.4	-385.4	1150.4	EOD TO VERTICAL
6523.0	6639.5	0.00	0.00	965.6	-625.4	-385.4	1150.4	KOP (10°/100ft BUR)
7096.0	7539.6	90.00	89.33	972.3	-52.4	173.6	1723.4	HZ LP: 2500ft FSL & 460ft FWL of Sec 21
7096.0	11900.5	90.00	89.34	1023.0	4308.2	4428.0	6084.4	BHL: 2500ft FSL & 460ft FEL of Sec 21

WELLBORE TARGET DETAILS (LAT/LONG)

Name	TVD	+N/-S	+E/-W	Latitude	Longitude
KOP - KITELEY 1	6523.0	965.6	-625.4	40.210822	-105.017708
BHL - KITELEY 1	7096.0	1023.0	4308.2	40.210978	-105.000044
HZ LP - KITELEY 1	7096.0	972.3	-52.5	40.210840	-105.015657

FORMATION TOP DETAILS

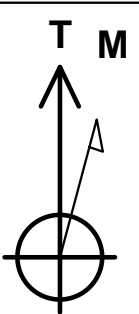
TVDPath	MDPath	Formation
3550.0	3618.2	PARKMAN
4360.0	4446.3	SUSSEX
4602.0	4693.7	SHANNON
6926.0	7086.5	SHARON SPRINGS
6966.0	7145.9	NIOBRARA

PROPOSED LOCAL COORDINATES

SHL: 1527ft FSL & 513ft FWL of Sec 21

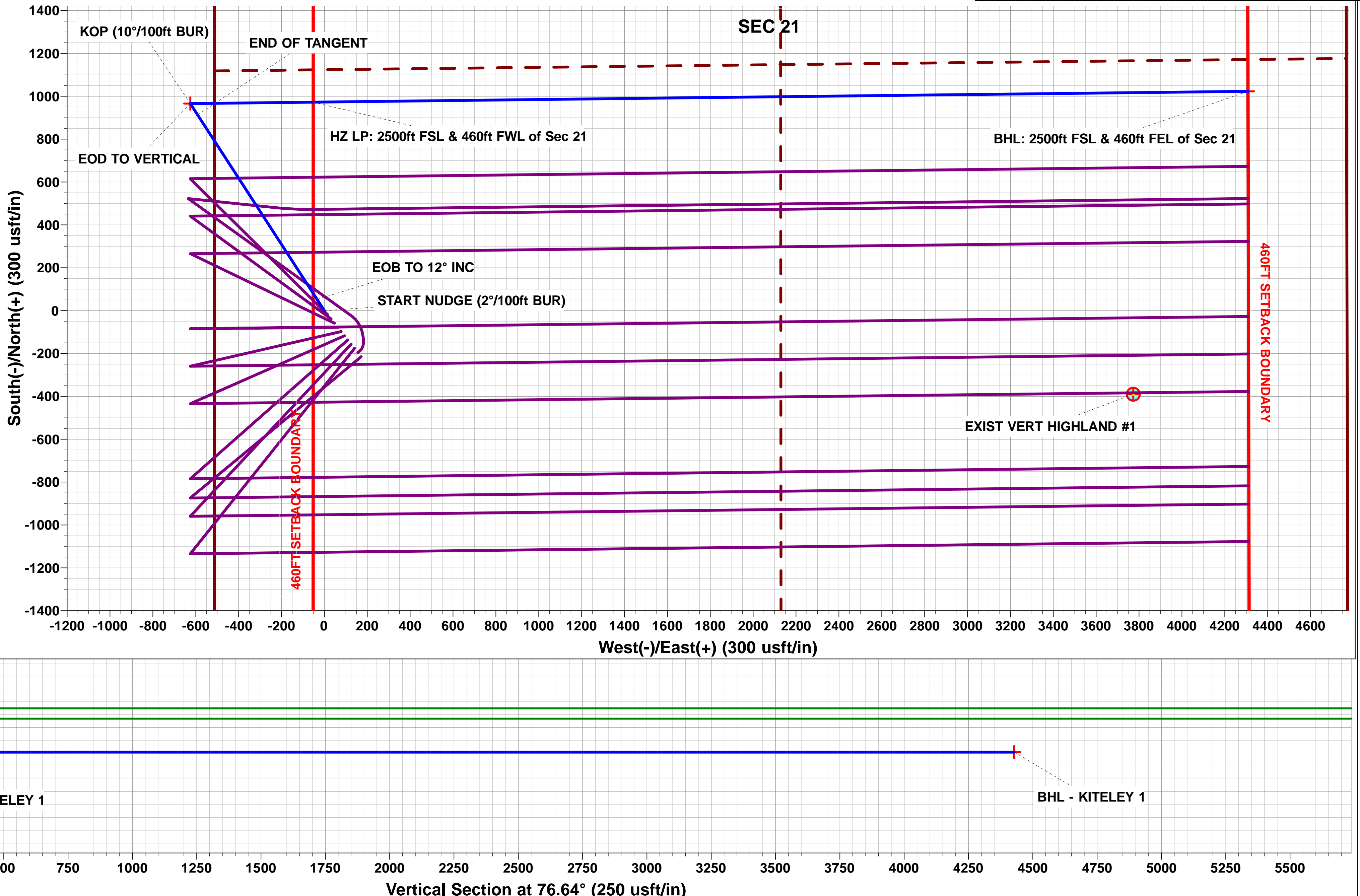
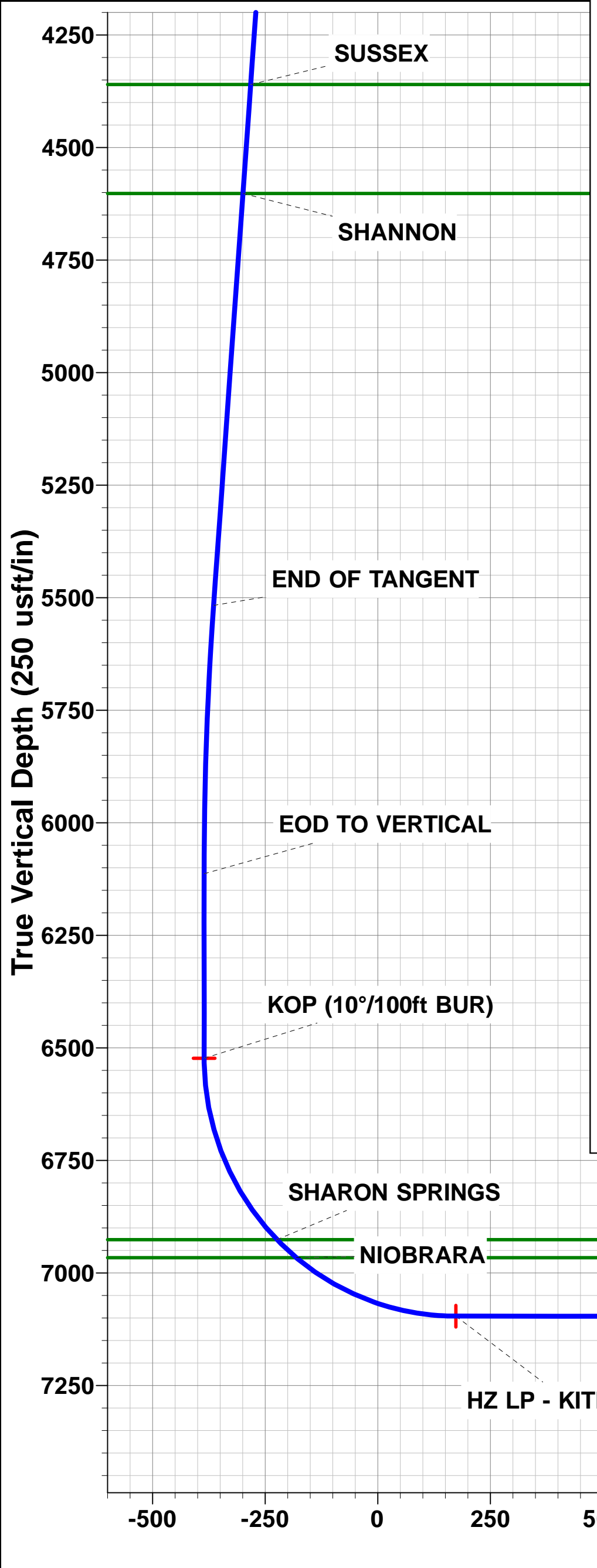
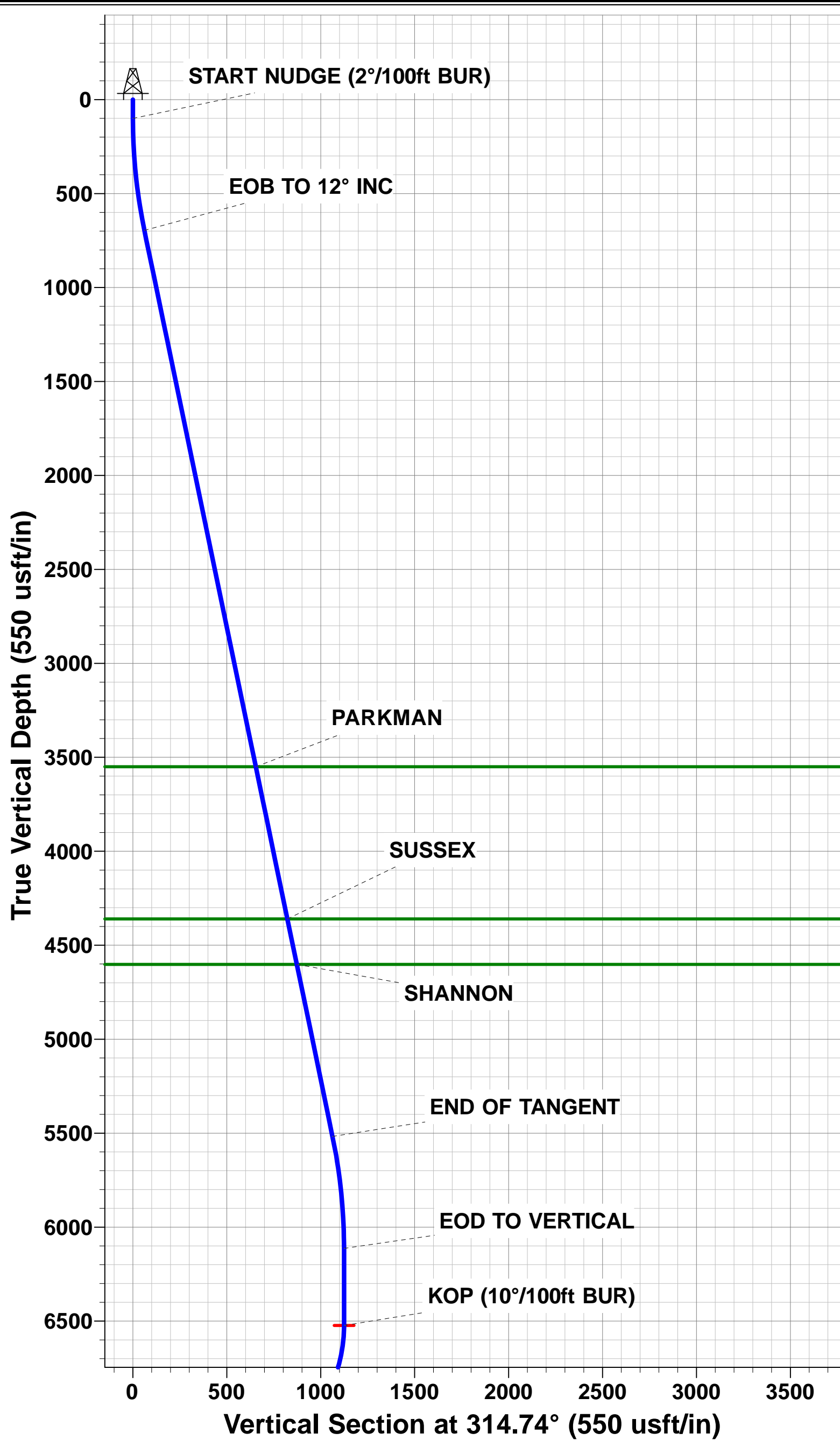
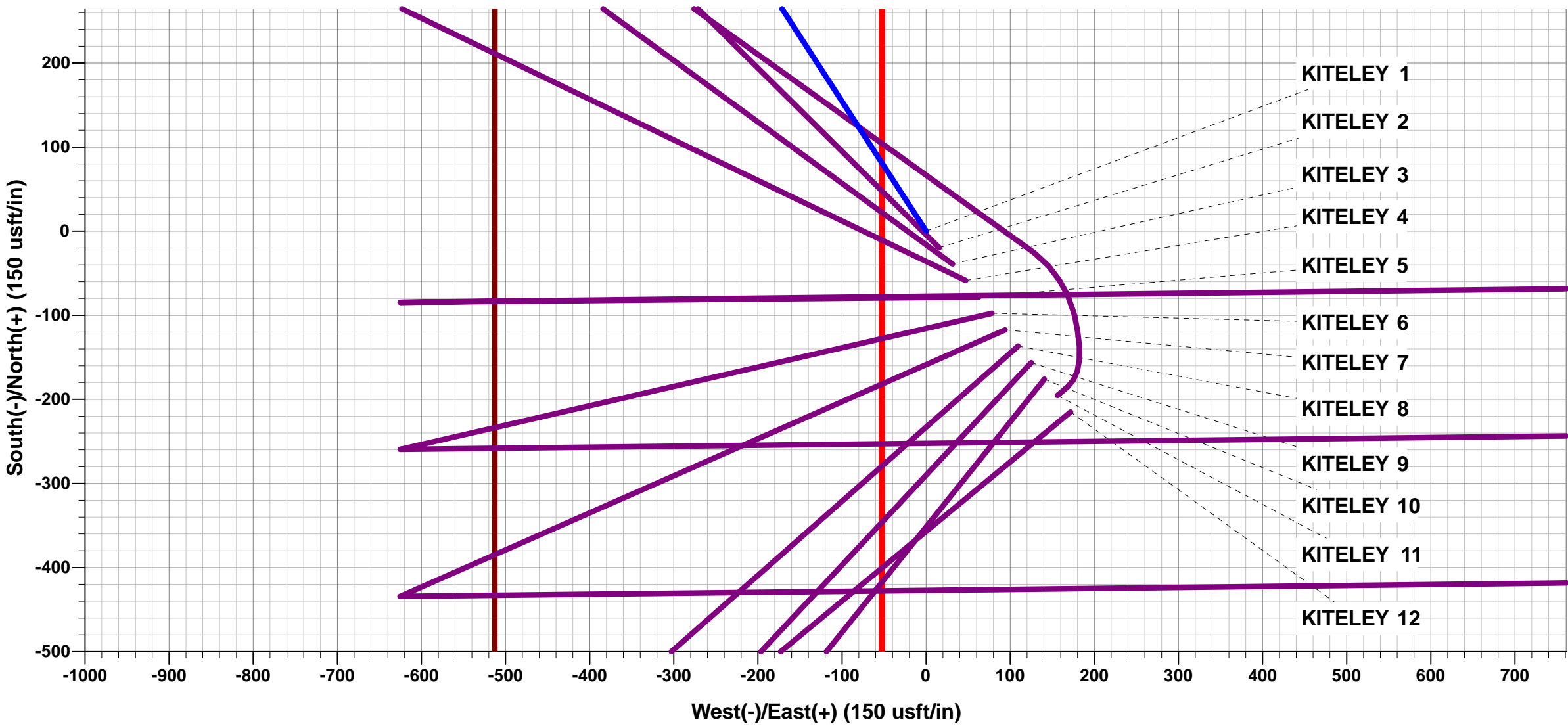
LP: 2500ft FSL & 460ft FWL of Sec 21

BHL: 2500ft FSL & 460ft FEL of Sec 21



Azimuths to True North
Magnetic North: 8.41°

Magnetic Field
Strength: 52357.0snT
Dip Angle: 66.68°
Date: 24/08/2016
Model: IGRF2015



Planning Report



Database:	EDM 5000.1 Single User Db	Local Co-ordinate Reference:	Well KITELEY 1
Company:	EXTRACTION OIL & GAS	TVD Reference:	KB-EST @ 5007.0usft (Original Well Elev)
Project:	WELD COUNTY, COLORADO (NAD 83)	MD Reference:	KB-EST @ 5007.0usft (Original Well Elev)
Site:	NW SW SEC. 21 T3N R68W 6th P.M.	North Reference:	True
Well:	KITELEY 1	Survey Calculation Method:	Minimum Curvature
Wellbore:	ORIGINAL WELLBORE		
Design:	PROPOSAL #1		

Project	WELD COUNTY, COLORADO (NAD 83)		
Map System:	US State Plane 1983	System Datum:	Mean Sea Level
Geo Datum:	North American Datum 1983		
Map Zone:	Colorado Northern Zone		Using geodetic scale factor

Site	NW SW SEC. 21 T3N R68W 6th P.M.		
Site Position:		Northing:	1,319,048.75 usft
From:	Lat/Long	Easting:	3,135,328.07 usft
Position Uncertainty:	0.0 usft	Slot Radius:	1.10000ft
		Latitude:	40.208171
		Longitude:	-105.015469
		Grid Convergence:	0.31 °

Well	KITELEY 1		
Well Position	+N-S	0.0 usft	Northing: 1,319,048.75 usfi
	+E-W	0.0 usft	Easting: 3,135,328.07 usfi
Position Uncertainty	0.0 usft	Wellhead Elevation:	usfi
		Latitude:	40.208171
		Longitude:	-105.015469
		Ground Level:	4,991.0 usft

Wellbore	ORIGINAL WELLBORE				
Magnetics	Model Name	Sample Date	Declination (°)	Dip Angle (°)	Field Strength (nT)
	IGRF2015	24/08/2016	8.41	66.68	52,357

Design	PROPOSAL #1				
Audit Notes:					
Version:	Phase:	PROTOTYPE	Tie On Depth:	0.0	
Vertical Section:	Depth From (TVD) (usft)	+N-S (usft)	+E-W (usft)	Direction (°)	
	7,096.0	0.0	0.0	76.64	

Plan Sections											
MD (usft)	Inc (°)	Azi (°)	Vertical Depth	SS (usft)	+N-S (usft)	+E-W (usft)	Dogleg Rate (°/100usf)	Build Rate (°/100usf)	Turn Rate (°/100usf)	TFO (°)	Target
0.0	0.00	0.00	0.0	-5,007.0	0.0	0.0	0.00	0.00	0.00	0.00	
100.0	0.00	0.00	100.0	-4,907.0	0.0	0.0	0.00	0.00	0.00	0.00	
700.2	12.00	327.07	695.8	-4,311.2	52.6	-34.1	2.00	2.00	0.00	327.07	
5,629.4	12.00	327.07	5,517.2	510.2	913.0	-591.3	0.00	0.00	0.00	0.00	
6,229.5	0.00	0.00	6,113.0	1,106.0	965.6	-625.4	2.00	-2.00	0.00	180.00	
6,639.5	0.00	0.00	6,523.0	1,516.0	965.6	-625.4	0.00	0.00	0.00	0.00	KOP - KITELEY 1
7,539.6	90.00	89.33	7,096.0	2,089.0	972.3	-52.4	10.00	10.00	0.00	89.33	
11,900.5	90.00	89.34	7,096.0	2,089.0	1,023.0	4,308.2	0.00	0.00	0.00	90.00	BHL - KITELEY 1

Planning Report



Database:	EDM 5000.1 Single User Db	Local Co-ordinate Reference:	Well KITELEY 1
Company:	EXTRACTION OIL & GAS	TVD Reference:	KB-EST @ 5007.0usft (Original Well Elev)
Project:	WELD COUNTY, COLORADO (NAD 83)	MD Reference:	KB-EST @ 5007.0usft (Original Well Elev)
Site:	NW SW SEC. 21 T3N R68W 6th P.M.	North Reference:	True
Well:	KITELEY 1	Survey Calculation Method:	Minimum Curvature
Wellbore:	ORIGINAL WELLBORE		
Design:	PROPOSAL #1		

Planned Survey

MD (usft)	Inc (°)	Azi (°)	TVD (usft)	SS (usft)	+N/-S (usft)	+E/-W (usft)	Vertical Section (usft)	Dogleg Rate (°/100usft)	Build Rate (°/100usft)	Turn Rate (°/100usft)
SHL: 1527ft FSL & 513ft FWL of Sec 21										
0.0	0.00	0.00	0.0	5,007.00	0.0	0.0	0.0	0.00	0.00	0.00
START NUDGE (2°/100ft BUR)										
100.0	0.00	0.00	100.0	4,907.00	0.0	0.0	0.0	0.00	0.00	0.00
200.0	2.00	327.07	200.0	4,807.02	1.5	-0.9	-0.6	2.00	2.00	0.00
300.0	4.00	327.07	299.8	4,707.16	5.9	-3.8	-2.3	2.00	2.00	0.00
400.0	6.00	327.07	399.5	4,607.55	13.2	-8.5	-5.3	2.00	2.00	0.00
500.0	8.00	327.07	498.7	4,508.30	23.4	-15.2	-9.3	2.00	2.00	0.00
600.0	10.00	327.07	597.5	4,409.53	36.5	-23.7	-14.6	2.00	2.00	0.00
700.0	12.00	327.07	695.6	4,311.38	52.5	-34.0	-21.0	2.00	2.00	0.00
EOB TO 12° INC										
700.2	12.00	327.07	695.8	4,311.19	52.6	-34.1	-21.0	2.00	2.00	0.00
800.0	12.00	327.07	793.4	4,213.56	70.0	-45.3	-27.9	0.00	0.00	0.00
900.0	12.00	327.07	891.2	4,115.75	87.5	-56.6	-34.9	0.00	0.00	0.00
1,000.0	12.00	327.07	989.1	4,017.94	104.9	-68.0	-41.9	0.00	0.00	0.00
1,100.0	12.00	327.07	1,086.9	3,920.12	122.4	-79.3	-48.8	0.00	0.00	0.00
1,200.0	12.00	327.07	1,184.7	3,822.31	139.8	-90.6	-55.8	0.00	0.00	0.00
1,300.0	12.00	327.07	1,282.5	3,724.50	157.3	-101.9	-62.8	0.00	0.00	0.00
1,400.0	12.00	327.07	1,380.3	3,626.68	174.7	-113.2	-69.7	0.00	0.00	0.00
1,500.0	12.00	327.07	1,478.1	3,528.87	192.2	-124.5	-76.7	0.00	0.00	0.00
1,600.0	12.00	327.07	1,575.9	3,431.06	209.7	-135.8	-83.7	0.00	0.00	0.00
1,700.0	12.00	327.07	1,673.8	3,333.24	227.1	-147.1	-90.6	0.00	0.00	0.00
1,800.0	12.00	327.07	1,771.6	3,235.43	244.6	-158.4	-97.6	0.00	0.00	0.00
1,900.0	12.00	327.07	1,869.4	3,137.62	262.0	-169.7	-104.6	0.00	0.00	0.00
2,000.0	12.00	327.07	1,967.2	3,039.80	279.5	-181.0	-111.5	0.00	0.00	0.00
2,100.0	12.00	327.07	2,065.0	2,941.99	296.9	-192.3	-118.5	0.00	0.00	0.00
2,200.0	12.00	327.07	2,162.8	2,844.18	314.4	-203.6	-125.5	0.00	0.00	0.00
2,300.0	12.00	327.07	2,260.6	2,746.36	331.8	-214.9	-132.5	0.00	0.00	0.00
2,400.0	12.00	327.07	2,358.5	2,648.55	349.3	-226.2	-139.4	0.00	0.00	0.00
2,500.0	12.00	327.07	2,456.3	2,550.74	366.8	-237.5	-146.4	0.00	0.00	0.00
2,600.0	12.00	327.07	2,554.1	2,452.92	384.2	-248.8	-153.4	0.00	0.00	0.00
2,700.0	12.00	327.07	2,651.9	2,355.11	401.7	-260.2	-160.3	0.00	0.00	0.00
2,800.0	12.00	327.07	2,749.7	2,257.30	419.1	-271.5	-167.3	0.00	0.00	0.00
2,900.0	12.00	327.07	2,847.5	2,159.48	436.6	-282.8	-174.3	0.00	0.00	0.00
3,000.0	12.00	327.07	2,945.3	2,061.67	454.0	-294.1	-181.2	0.00	0.00	0.00
3,100.0	12.00	327.07	3,043.1	1,963.86	471.5	-305.4	-188.2	0.00	0.00	0.00
3,200.0	12.00	327.07	3,141.0	1,866.04	488.9	-316.7	-195.2	0.00	0.00	0.00
3,300.0	12.00	327.07	3,238.8	1,768.23	506.4	-328.0	-202.1	0.00	0.00	0.00
3,400.0	12.00	327.07	3,336.6	1,670.42	523.9	-339.3	-209.1	0.00	0.00	0.00
3,500.0	12.00	327.07	3,434.4	1,572.60	541.3	-350.6	-216.1	0.00	0.00	0.00
3,600.0	12.00	327.07	3,532.2	1,474.79	558.8	-361.9	-223.0	0.00	0.00	0.00
PARKMAN										
3,618.2	12.00	327.07	3,550.0	1,457.00	561.9	-364.0	-224.3	0.00	0.00	0.00
3,700.0	12.00	327.07	3,630.0	1,376.98	576.2	-373.2	-230.0	0.00	0.00	0.00
3,800.0	12.00	327.07	3,727.8	1,279.16	593.7	-384.5	-237.0	0.00	0.00	0.00
3,900.0	12.00	327.07	3,825.7	1,181.35	611.1	-395.8	-243.9	0.00	0.00	0.00
4,000.0	12.00	327.07	3,923.5	1,083.54	628.6	-407.1	-250.9	0.00	0.00	0.00
4,100.0	12.00	327.07	4,021.3	985.72	646.1	-418.4	-257.9	0.00	0.00	0.00
4,200.0	12.00	327.07	4,119.1	887.91	663.5	-429.7	-264.8	0.00	0.00	0.00
4,300.0	12.00	327.07	4,216.9	790.10	681.0	-441.0	-271.8	0.00	0.00	0.00
4,400.0	12.00	327.07	4,314.7	692.28	698.4	-452.4	-278.8	0.00	0.00	0.00
SUSSEX										
4,446.3	12.00	327.07	4,360.0	647.00	706.5	-457.6	-282.0	0.00	0.00	0.00
4,500.0	12.00	327.07	4,412.5	594.47	715.9	-463.7	-285.7	0.00	0.00	0.00

Database:	EDM 5000.1 Single User Db	Local Co-ordinate Reference:	Well KITELEY 1
Company:	EXTRACTION OIL & GAS	TVD Reference:	KB-EST @ 5007.0usft (Original Well Elev)
Project:	WELD COUNTY, COLORADO (NAD 83)	MD Reference:	KB-EST @ 5007.0usft (Original Well Elev)
Site:	NW SW SEC. 21 T3N R68W 6th P.M.	North Reference:	True
Well:	KITELEY 1	Survey Calculation Method:	Minimum Curvature
Wellbore:	ORIGINAL WELLBORE		
Design:	PROPOSAL #1		

Planned Survey

MD (usft)	Inc (°)	Azi (°)	TVD (usft)	SS (usft)	+N/-S (usft)	+E/-W (usft)	Vertical Section (usft)	Dogleg Rate (°/100usft)	Build Rate (°/100usft)	Turn Rate (°/100usft)
4,600.0	12.00	327.07	4,510.3	496.66	733.3	-475.0	-292.7	0.00	0.00	0.00
SHANNON										
4,693.7	12.00	327.07	4,602.0	405.00	749.7	-485.6	-299.2	0.00	0.00	0.00
4,700.0	12.00	327.07	4,608.2	398.84	750.8	-486.3	-299.7	0.00	0.00	0.00
4,800.0	12.00	327.07	4,706.0	301.03	768.2	-497.6	-306.6	0.00	0.00	0.00
4,900.0	12.00	327.07	4,803.8	203.22	785.7	-508.9	-313.6	0.00	0.00	0.00
5,000.0	12.00	327.07	4,901.6	105.40	803.2	-520.2	-320.6	0.00	0.00	0.00
5,100.0	12.00	327.07	4,999.4	7.59	820.6	-531.5	-327.5	0.00	0.00	0.00
5,200.0	12.00	327.07	5,097.2	-90.22	838.1	-542.8	-334.5	0.00	0.00	0.00
5,300.0	12.00	327.07	5,195.0	-188.04	855.5	-554.1	-341.5	0.00	0.00	0.00
5,400.0	12.00	327.07	5,292.9	-285.85	873.0	-565.4	-348.4	0.00	0.00	0.00
5,500.0	12.00	327.07	5,390.7	-383.66	890.4	-576.7	-355.4	0.00	0.00	0.00
5,600.0	12.00	327.07	5,488.5	-481.48	907.9	-588.0	-362.4	0.00	0.00	0.00
END OF TANGENT										
5,629.4	12.00	327.07	5,517.2	-510.19	913.0	-591.3	-364.4	0.00	0.00	0.00
5,700.0	10.59	327.07	5,586.5	-579.47	924.6	-598.9	-369.1	2.00	-2.00	0.00
5,800.0	8.59	327.07	5,685.1	-678.06	938.6	-607.9	-374.6	2.00	-2.00	0.00
5,900.0	6.59	327.07	5,784.2	-777.18	949.7	-615.1	-379.1	2.00	-2.00	0.00
6,000.0	4.59	327.07	5,883.7	-876.70	957.9	-620.4	-382.3	2.00	-2.00	0.00
6,100.0	2.59	327.07	5,983.5	-976.50	963.1	-623.8	-384.4	2.00	-2.00	0.00
6,200.0	0.59	327.07	6,083.5	-1,076.46	965.5	-625.3	-385.4	2.00	-2.00	0.00
EOD TO VERTICAL										
6,229.5	0.00	0.00	6,113.0	-1,106.00	965.6	-625.4	-385.4	2.00	-2.00	0.00
6,300.0	0.00	0.00	6,183.5	-1,176.46	965.6	-625.4	-385.4	0.00	0.00	0.00
6,400.0	0.00	0.00	6,283.5	-1,276.46	965.6	-625.4	-385.4	0.00	0.00	0.00
6,500.0	0.00	0.00	6,383.5	-1,376.46	965.6	-625.4	-385.4	0.00	0.00	0.00
6,600.0	0.00	0.00	6,483.5	-1,476.46	965.6	-625.4	-385.4	0.00	0.00	0.00
KOP (10°/100ft BUR)										
6,639.5	0.00	0.00	6,523.0	-1,516.00	965.6	-625.4	-385.4	0.00	0.00	0.00
6,700.0	6.05	89.33	6,583.3	-1,576.34	965.6	-622.2	-382.3	10.00	10.00	0.00
6,800.0	16.04	89.33	6,681.4	-1,674.37	965.9	-603.1	-363.6	10.00	10.00	0.00
6,900.0	26.04	89.33	6,774.6	-1,767.58	966.3	-567.2	-328.6	10.00	10.00	0.00
7,000.0	36.04	89.33	6,860.1	-1,853.15	966.9	-515.7	-278.4	10.00	10.00	0.00
SHARON SPRINGS										
7,086.5	44.69	89.33	6,926.0	-1,919.00	967.5	-459.7	-223.8	10.00	10.00	0.00
7,100.0	46.04	89.33	6,935.5	-1,928.47	967.7	-450.1	-214.4	10.00	10.00	0.00
NIOBRARA										
7,145.9	50.64	89.33	6,966.0	-1,959.00	968.1	-415.8	-180.9	10.00	10.00	0.00
7,200.0	56.04	89.33	6,998.3	-1,991.27	968.6	-372.5	-138.7	10.00	10.00	0.00
7,300.0	66.04	89.33	7,046.6	-2,039.63	969.6	-285.1	-53.4	10.00	10.00	0.00
7,400.0	76.04	89.33	7,079.1	-2,072.08	970.7	-190.7	38.7	10.00	10.00	0.00
7,500.0	86.04	89.33	7,094.6	-2,087.63	971.9	-92.0	135.0	10.00	10.00	0.00
HZ LP: 2500ft FSL & 460ft FWL of Sec 21										
7,539.6	90.00	89.33	7,096.0	-2,089.00	972.3	-52.4	173.6	10.00	10.00	0.00
7,600.0	90.00	89.33	7,096.0	-2,089.00	973.0	7.9	232.5	0.00	0.00	0.00
7,700.0	90.00	89.33	7,096.0	-2,089.00	974.2	107.9	330.1	0.00	0.00	0.00
7,800.0	90.00	89.33	7,096.0	-2,089.00	975.4	207.9	427.6	0.00	0.00	0.00
7,900.0	90.00	89.33	7,096.0	-2,089.00	976.5	307.9	525.2	0.00	0.00	0.00
8,000.0	90.00	89.33	7,096.0	-2,089.00	977.7	407.9	622.8	0.00	0.00	0.00
8,100.0	90.00	89.33	7,096.0	-2,089.00	978.9	507.9	720.3	0.00	0.00	0.00
8,200.0	90.00	89.33	7,096.0	-2,089.00	980.0	607.9	817.9	0.00	0.00	0.00
8,300.0	90.00	89.33	7,096.0	-2,089.00	981.2	707.9	915.4	0.00	0.00	0.00
8,400.0	90.00	89.33	7,096.0	-2,089.00	982.4	807.9	1,013.0	0.00	0.00	0.00

Planning Report



Database:	EDM 5000.1 Single User Db	Local Co-ordinate Reference:	Well KITELEY 1
Company:	EXTRACTION OIL & GAS	TVD Reference:	KB-EST @ 5007.0usft (Original Well Elev)
Project:	WELD COUNTY, COLORADO (NAD 83)	MD Reference:	KB-EST @ 5007.0usft (Original Well Elev)
Site:	NW SW SEC. 21 T3N R68W 6th P.M.	North Reference:	True
Well:	KITELEY 1	Survey Calculation Method:	Minimum Curvature
Wellbore:	ORIGINAL WELLBORE		
Design:	PROPOSAL #1		

Planned Survey

MD (usft)	Inc (°)	Azi (°)	TVD (usft)	SS (usft)	+N/-S (usft)	+E/-W (usft)	Vertical Section (usft)	Dogleg Rate (°/100usft)	Build Rate (°/100usft)	Turn Rate (°/100usft)
8,500.0	90.00	89.33	7,096.0	-2,089.00	983.5	907.9	1,110.5	0.00	0.00	0.00
8,600.0	90.00	89.33	7,096.0	-2,089.00	984.7	1,007.9	1,208.1	0.00	0.00	0.00
8,700.0	90.00	89.33	7,096.0	-2,089.00	985.9	1,107.9	1,305.7	0.00	0.00	0.00
8,800.0	90.00	89.33	7,096.0	-2,089.00	987.0	1,207.9	1,403.2	0.00	0.00	0.00
8,900.0	90.00	89.33	7,096.0	-2,089.00	988.2	1,307.9	1,500.8	0.00	0.00	0.00
9,000.0	90.00	89.33	7,096.0	-2,089.00	989.4	1,407.8	1,598.3	0.00	0.00	0.00
9,100.0	90.00	89.33	7,096.0	-2,089.00	990.5	1,507.8	1,695.9	0.00	0.00	0.00
9,200.0	90.00	89.33	7,096.0	-2,089.00	991.7	1,607.8	1,793.4	0.00	0.00	0.00
9,300.0	90.00	89.33	7,096.0	-2,089.00	992.9	1,707.8	1,891.0	0.00	0.00	0.00
9,400.0	90.00	89.33	7,096.0	-2,089.00	994.0	1,807.8	1,988.6	0.00	0.00	0.00
9,500.0	90.00	89.33	7,096.0	-2,089.00	995.2	1,907.8	2,086.1	0.00	0.00	0.00
9,600.0	90.00	89.33	7,096.0	-2,089.00	996.4	2,007.8	2,183.7	0.00	0.00	0.00
9,700.0	90.00	89.33	7,096.0	-2,089.00	997.5	2,107.8	2,281.2	0.00	0.00	0.00
9,800.0	90.00	89.33	7,096.0	-2,089.00	998.7	2,207.8	2,378.8	0.00	0.00	0.00
9,900.0	90.00	89.34	7,096.0	-2,089.00	999.8	2,307.8	2,476.3	0.00	0.00	0.00
10,000.0	90.00	89.34	7,096.0	-2,089.00	1,001.0	2,407.8	2,573.9	0.00	0.00	0.00
10,100.0	90.00	89.34	7,096.0	-2,089.00	1,002.2	2,507.8	2,671.5	0.00	0.00	0.00
10,200.0	90.00	89.34	7,096.0	-2,089.00	1,003.3	2,607.8	2,769.0	0.00	0.00	0.00
10,300.0	90.00	89.34	7,096.0	-2,089.00	1,004.5	2,707.8	2,866.6	0.00	0.00	0.00
10,400.0	90.00	89.34	7,096.0	-2,089.00	1,005.6	2,807.8	2,964.1	0.00	0.00	0.00
10,500.0	90.00	89.34	7,096.0	-2,089.00	1,006.8	2,907.7	3,061.7	0.00	0.00	0.00
10,600.0	90.00	89.34	7,096.0	-2,089.00	1,008.0	3,007.7	3,159.2	0.00	0.00	0.00
10,700.0	90.00	89.34	7,096.0	-2,089.00	1,009.1	3,107.7	3,256.8	0.00	0.00	0.00
10,800.0	90.00	89.34	7,096.0	-2,089.00	1,010.3	3,207.7	3,354.3	0.00	0.00	0.00
10,900.0	90.00	89.34	7,096.0	-2,089.00	1,011.4	3,307.7	3,451.9	0.00	0.00	0.00
11,000.0	90.00	89.34	7,096.0	-2,089.00	1,012.6	3,407.7	3,549.5	0.00	0.00	0.00
11,100.0	90.00	89.34	7,096.0	-2,089.00	1,013.7	3,507.7	3,647.0	0.00	0.00	0.00
11,200.0	90.00	89.34	7,096.0	-2,089.00	1,014.9	3,607.7	3,744.6	0.00	0.00	0.00
11,300.0	90.00	89.34	7,096.0	-2,089.00	1,016.0	3,707.7	3,842.1	0.00	0.00	0.00
11,400.0	90.00	89.34	7,096.0	-2,089.00	1,017.2	3,807.7	3,939.7	0.00	0.00	0.00
11,500.0	90.00	89.34	7,096.0	-2,089.00	1,018.3	3,907.7	4,037.2	0.00	0.00	0.00
11,600.0	90.00	89.34	7,096.0	-2,089.00	1,019.5	4,007.7	4,134.8	0.00	0.00	0.00
11,700.0	90.00	89.34	7,096.0	-2,089.00	1,020.7	4,107.7	4,232.3	0.00	0.00	0.00
11,800.0	90.00	89.34	7,096.0	-2,089.00	1,021.8	4,207.7	4,329.9	0.00	0.00	0.00
11,900.0	90.00	89.34	7,096.0	-2,089.00	1,023.0	4,307.7	4,427.5	0.00	0.00	0.00
BHL: 2500ft FSL & 460ft FEL of Sec 21										
11,900.5	90.00	89.34	7,096.0	-2,089.00	1,023.0	4,308.2	4,428.0	0.05	0.00	0.05

Formations

MD (usft)	TVD (usft)	Name	Lithology	Dip (°)	Dip Direction (°)
3,618.2	3,550.0	PARKMAN			
4,446.3	4,360.0	SUSSEX			
4,693.7	4,602.0	SHANNON			
7,086.5	6,926.0	SHARON SPRINGS			
7,145.9	6,966.0	NIOBRARA			

Database:	EDM 5000.1 Single User Db	Local Co-ordinate Reference:	Well KITELEY 1
Company:	EXTRACTION OIL & GAS	TVD Reference:	KB-EST @ 5007.0usft (Original Well Elev)
Project:	WELD COUNTY, COLORADO (NAD 83)	MD Reference:	KB-EST @ 5007.0usft (Original Well Elev)
Site:	NW SW SEC. 21 T3N R68W 6th P.M.	North Reference:	True
Well:	KITELEY 1	Survey Calculation Method:	Minimum Curvature
Wellbore:	ORIGINAL WELLBORE		
Design:	PROPOSAL #1		

Plan Annotations

MD (usft)	TVD (usft)	Local Coordinates		Comment
		+N/-S (usft)	+E/-W (usft)	
0.0	0.0	0.0	0.0	SHL: 1527ft FSL & 513ft FWL of Sec 21
100.0	100.0	0.0	0.0	START NUDGE (2°/100ft BUR)
700.2	695.8	52.6	-34.1	EOB TO 12° INC
5,629.4	5,517.2	913.0	-591.3	END OF TANGENT
6,229.5	6,113.0	965.6	-625.4	EOD TO VERTICAL
6,639.5	6,523.0	965.6	-625.4	KOP (10°/100ft BUR)
7,539.6	7,096.0	972.3	-52.4	HZ LP: 2500ft FSL & 460ft FWL of Sec 21
11,900.5	7,096.0	1,023.0	4,308.2	BHL: 2500ft FSL & 460ft FEL of Sec 21