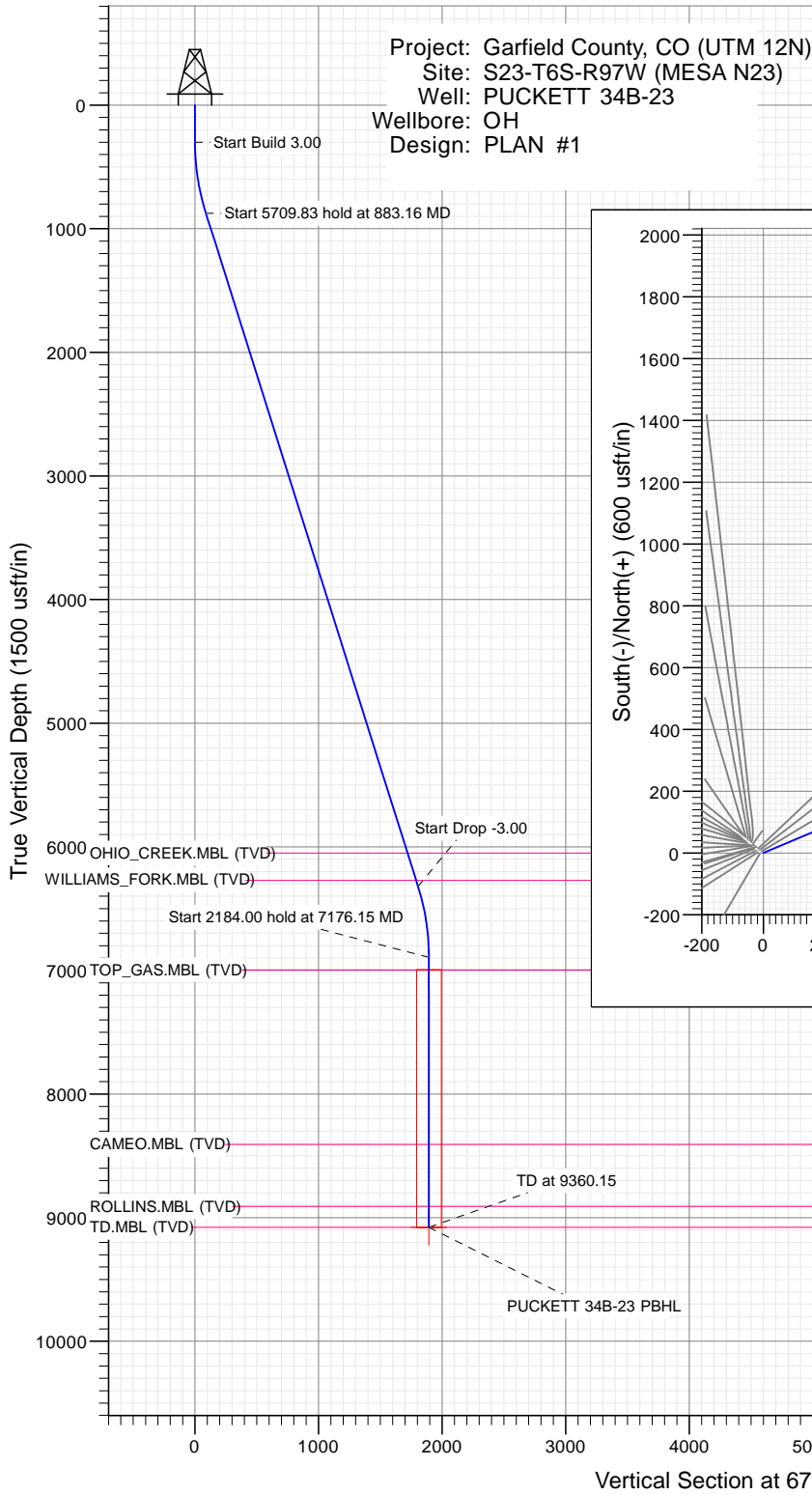


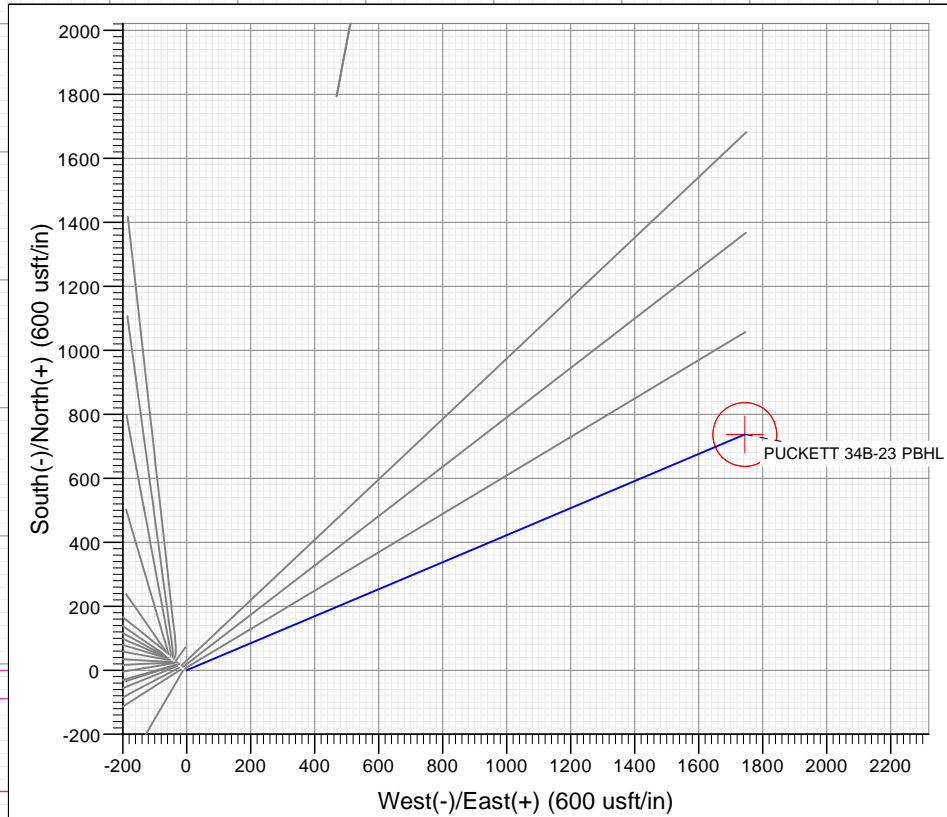


SECTION DETAILS

Sec	MD	Inc	Azi	TVD	+N/-S	+E/-W	Dleg	TFace	VSec	Target
1	0.00	0.00	0.00	0.00	0.00	0.00	0.00	0.00	0.00	
2	300.00	0.00	0.00	300.00	0.00	0.00	0.00	0.00	0.00	
3	883.16	17.49	67.09	874.14	34.39	81.38	3.00	67.09	88.34	
4	6592.99	17.49	67.09	6319.86	702.49	1662.50	0.00	0.00	1804.83	
5	7176.15	0.00	0.00	6894.00	736.88	1743.87	3.00	180.00	1893.17	
6	9360.15	0.00	0.00	9078.00	736.88	1743.87	0.00	0.00	1893.17	PUCKETT 34B-23 PBHL



PLAN #1 PUCKETT 34B-23 18X30X 1R 30' KB @ 8462.00usft Ground Level @ 8432.00 NAD 1927 - Western US Well PUCKETT 34B-23, True North									
Type	Target	Azimuth	Origin	Type	N/S	E/W	From		
TD	No Target (Freehand)	67.09	Slot		0.00	0.00	TVD	Latitude	Longitude
Name									
PUCKETT 34B-23 PBHL		9078.00	+N/-S	+E/-W	736.88	1743.87	39.505066	-108.181031	



FORMATION TOP DETAILS		
TVDPath	MDPath	Formation
6050.00	6310.04	OHIO_CREEK.MBL (TVD)
6271.00	6541.76	WILLIAMS_FORK.MBL (TVD)
6994.00	7276.15	TOP_GAS.MBL (TVD)
8408.00	8690.15	CAMEO.MBL (TVD)
8908.00	9190.15	ROLLINS.MBL (TVD)
9078.00	9360.15	TD.MBL (TVD)



Azimuths to True North
Magnetic North: 9.77°

Magnetic Field
Strength: 51800.0snT
Dip Angle: 65.85°
Date: 9/14/2016
Model: HDGM

Vertical Section at 67.09° (1500 usft/in)

WELL DETAILS: PUCKETT 34B-23

+N/-S	+E/-W	Northing	Ground Level:	8432.00	Latitude	Longitude
0.00	0.00	14357489.00	Easting	2433904.00	39.503044	-108.187209

CATHEDRAL

