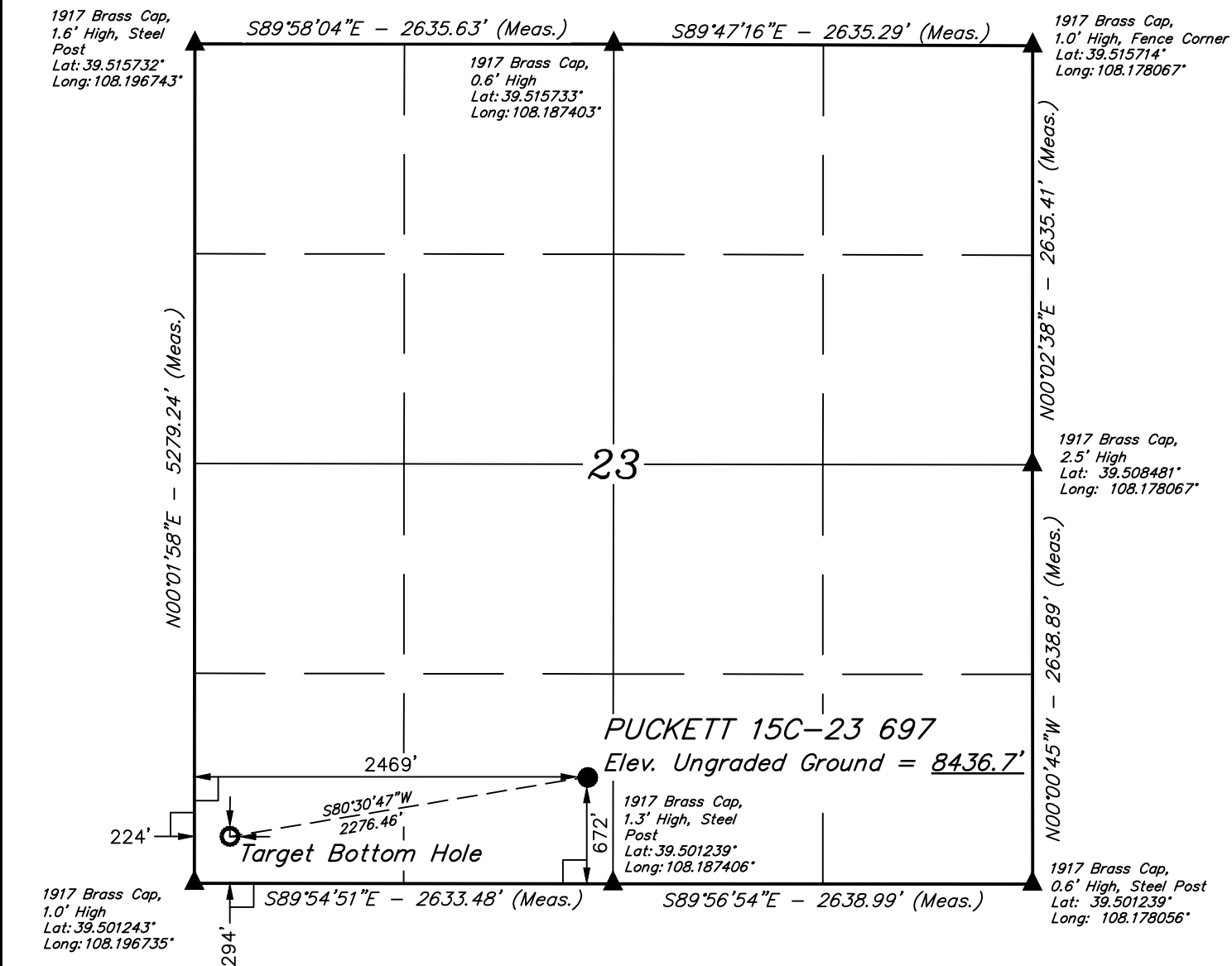


LEGEND:

- └─ = 90° SYMBOL
● = PROPOSED WELLHEAD.
○ = TARGET BOTTOM HOLE.
▲ = SECTION CORNERS LOCATED. (NAD 83)

T6S, R97W, 6th P.M.

PDOP = 1.2



NAD 83 (SURFACE LOCATION)	NAD 83 (TARGET BOTTOM HOLE)
LATITUDE = 39°30'11.10" (39.503083)	LATITUDE = 39°30'07.37" (39.502047)
LONGITUDE = 108°11'16.76" (108.187989)	LONGITUDE = 108°11'45.40" (108.195944)
NAD 27 (SURFACE LOCATION)	NAD 27 (TARGET BOTTOM HOLE)
LATITUDE = 39°30'11.18" (39.503106)	LATITUDE = 39°30'07.45" (39.502069)
LONGITUDE = 108°11'14.47" (108.187353)	LONGITUDE = 108°11'43.10" (108.195306)
UTM NAD 27 (ZONE 12)	UTM NAD 27 (ZONE 12)
N: 14357510.15 E: 2433862.77	N: 14357063.00 E: 2431630.60

CERTIFICATE

THIS IS TO CERTIFY THAT THE ABOVE PLAT WAS PREPARED FROM FIELD NOTES OF ACTUAL SURVEYS MADE BY ME OR UNDER MY SUPERVISION AND THAT THE SAME ARE TRUE AND CORRECT TO THE BEST OF MY KNOWLEDGE AND BELIEF.

REGISTERED LAND SURVEYOR
REGISTRATION NO. 38130
STATE OF COLORADO

08-02-16

BASIS OF BEARINGS

BASIS OF BEARINGS IS A G.P.S. OBSERVATION

BASIS OF ELEVATION

SPOT ELEVATION AT THE NORTHWEST CORNER OF SECTION 30, T5S, R95W, 6th P.M. TAKEN FROM THE FORKED GULCH QUADRANGLE, COLORADO, GARFIELD COUNTY, 7.5 MINUTE SERIES (TOPOGRAPHICAL MAP) PUBLISHED BY THE UNITED STATES DEPARTMENT OF THE INTERIOR, GEOLOGICAL SURVEY. SAID ELEVATION IS MARKED AS BEING 5966 FEET.

UELS, LLC

Corporate Office * 85 South 200 East
Vernal, UT 84078 * (435) 789-1017

**Caerus Oil & Gas LLC**

PUCKETT 15C-23 697
SE 1/4 SW 1/4, SECTION 23, T6S, R97W, 6th P.M.
GARFIELD COUNTY, COLORADO

SURVEYED BY	BART HUNTING, C.R.	09-06-16	SCALE
DRAWN BY	C.D.L.	09-07-16	1" = 1000'

WELL LOCATION PLAT