

HALLIBURTON

iCem[®] Service

EXTRACTION OIL & GAS

Date: Saturday, June 04, 2016

Breniman #10 Surface

Job Date: Sunday, May 29, 2016

Sincerely,
Julia Nichols

Legal Notice

Warning Disclaimer

Although the information contained in this report is based on sound engineering practices, the copyright owner(s) does (do) not accept any responsibility whatsoever, in negligence or otherwise, for any loss or damage arising from the possession or use of the report whether in terms of correctness or otherwise. The application, therefore, by the user of this report or any part thereof, is solely at the user's own risk.

Limitations of Liability

Except as expressly set forth herein, there are no representations or warranties by Halliburton, express or implied, including implied warranties of merchantability and/or fitness for a particular purpose. In no event will Halliburton or its suppliers be liable for consequential, incidental, special, punitive or exemplary damages (including, without limitation, loss of data, profits, use of hardware, or software). Customer accepts full responsibility for any investment made based on results from the Software. Any interpretations, analyses or modeling of any data, including, but not limited to Customer data, and any recommendation or decisions based upon such interpretations, analyses or modeling are opinions based upon inferences from measurements and empirical relationships and assumptions, which inferences and assumptions are not infallible, and with respect to which professional may differ. Accordingly, Halliburton cannot and does not warrant the accuracy, correctness or completeness of any such interpretation, recommendation, modeling or other products of the Software Product. As such, any interpretation, recommendation or modeling resulting from the Software for the purpose of any drilling, well treatment, production or financial decision will be at the sole risk of Customer. Under no circumstances will Halliburton or its suppliers be liable for any damages.

Table of Contents

1.0 Cementing Job Summary 4

 1.1 Executive Summary4

2.0 Real-Time Job Summary 7

 2.1 Job Event Log7

3.0 Attachments..... 8

 3.1 Custom Results: Job Chart with Events8

 3.2 Custom Results: Job Chart without Events9

1.0 Cementing Job Summary

1.1 Executive Summary

Halliburton appreciates the opportunity to perform the cementing services on the **Breniman #10** cement **Surface** casing job. A pre-job safety meeting was held before the job where details of the job were discussed, potential safety hazards were reviewed, and environmental compliance procedures were outlined.

Approximately 17 barrels of cement returned to surface.

Halliburton maintains a continuous quality improvement process and appreciates any comments or suggestions that you may have. Halliburton again thanks you for the opportunity to perform service work on this well. We hope to be your solutions provider for future projects.

Respectfully,

Halliburton [Ft. Lupton]

HALLIBURTON

Cementing Job Summary

The Road to Excellence Starts with Safety

Sold To #: 389404	Ship To #: 3615648	Quote #:	Sales Order #: 0903338186							
Customer: EXTRACTION OIL & GAS -		Customer Rep: Shane								
Well Name: BRENNIMAN	Well #: 10	API/UWI #: 05-123-40427-00								
Field: WATTENBERG	City (SAP): WINDSOR	County/Parish: WELD	State: COLORADO							
Legal Description: NE NW-16-6N-67W-682FNL-2013FWL										
Contractor: PATTERSON-UTI ENERGY		Rig/Platform Name/Num: PATTERSON 346								
Job BOM: 7521										
Well Type: HORIZONTAL OIL										
Sales Person: HALAMERICA\HB71271		Srvc Supervisor: Vaughn Oteri								
Job										
Formation Name										
Formation Depth (MD)	Top	Bottom								
Form Type	BHST									
Job depth MD	1566ft	Job Depth TVD								
Water Depth		Wk Ht Above Floor								
Perforation Depth (MD)	From	To								
Well Data										
Description	New / Used	Size in	ID in	Weight lbm/ft	Thread	Grade	Top MD ft	Bottom MD ft	Top TVD ft	Bottom TVD ft
Casing		9.625	8.921	36			0	1565	0	1565
Open Hole Section			13.5				0	1566	0	1566
Tools and Accessories										
Type	Size in	Qty	Make	Depth ft		Type	Size in	Qty	Make	
Guide Shoe	9.625					Top Plug	9.625	1	HES	
Float Shoe	9.625			1565		Bottom Plug	9.625		HES	
Float Collar	9.625			1523		SSR plug set	9.625		HES	
Insert Float	9.625					Plug Container	9.625	1	HES	
Stage Tool	9.625					Centralizers	9.625		HES	
Fluid Data										
Stage/Plug #: 1										
Fluid #	Stage Type	Fluid Name	Qty	Qty UoM	Mixing Density lbm/gal	Yield ft3/sack	Mix Fluid Gal	Rate bbl/min	Total Mix Fluid Gal	
1	Fresh Water	Fresh Water/Red tracer dye	20	bbl	8.33			6		
Stage/Plug #: 2										
Fluid #	Stage Type	Fluid Name	Qty	Qty UoM	Mixing Density lbm/gal	Yield ft3/sack	Mix Fluid Gal	Rate bbl/min	Total Mix Fluid Gal	
2	SwiftCem	SWIFTCEM (TM) SYSTEM	550	sack	13.5	1.74		8	9.17	
9.17 Gal			FRESH WATER							

last updated on 6/4/2016 12:13:18 PM

Page 1 of 2

HALLIBURTON

Cementing Job Summary

Fluid #	Stage Type	Fluid Name	Qty	Qty UoM	Mixing Density lbm/gal	Yield ft3/sack	Mix Fluid Gal	Rate bbl/min	Total Mix Fluid Gal
3	Fresh water	Fresh water	117	bbl	9				
Cement Left In Pipe		Amount	42 ft		Reason			Shoe Joint	
Comment 17bbl of cement back to surface									

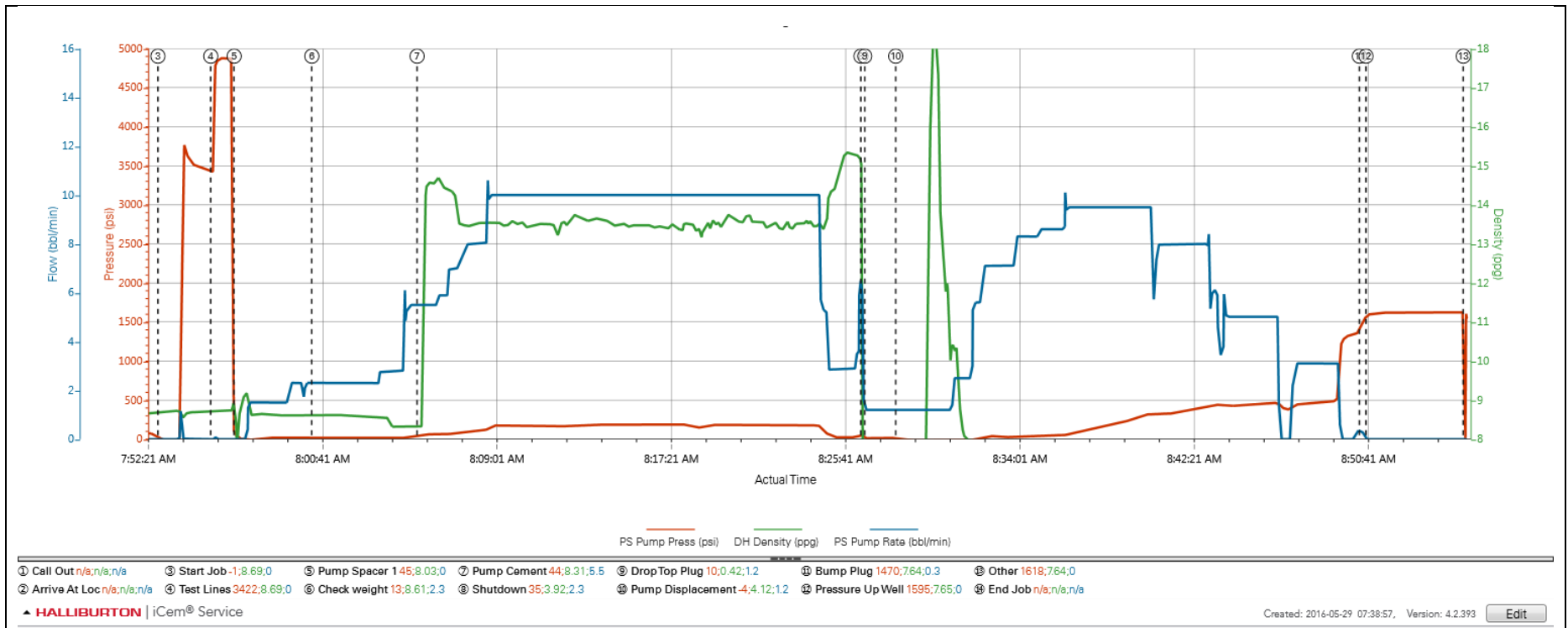
2.0 Real-Time Job Summary

2.1 Job Event Log

Type	Seq. No.	Activity	Graph Label	Date	Time	Source	PS Pump Press (psi)	DH Density (ppg)	PS Pump Rate (bbl/min)	Comments
Event	1	Call Out	Call Out	5/29/2016	03:00:00	USER				Call out from coordinator hub
Event	2	Arrive At Loc	Arrive At Loc	5/29/2016	07:00:00	USER				Requested on location @0730 Arrived on location @0700 met with company rep to discuss job process and concerns advised that casing was on bottom and were ready for HES to take control of the well
Event	3	Start Job	Start Job	5/29/2016	07:52:55	COM4				Held pre-job safety meeting with all hands on location to discuss job process and hazards
Event	4	Test Lines	Test Lines	5/29/2016	07:55:27	COM4	3422.00	8.69	0.00	Pressure tested pumps and lines found no leaks and pressure held well. Tested to 4880 psi
Event	5	Pump Spacer 1	Pump Spacer 1	5/29/2016	07:56:34	COM4	45.00	8.03	0.00	Pumped 20bbl of fresh water with red dye at 6.0bpm 59psi
Event	6	Check Weight	Check weight	5/29/2016	08:00:17	COM4	13.00	8.61	2.30	Confirm weight of 13.5ppg cement
Event	7	Pump Cement	Pump Cement	5/29/2016	08:05:19	COM4	44.00	8.31	5.50	Mixed 550sks or 170bbl of 13.5ppg Y-1.74 G/SK-9.17 SwiftCem. Pumped at 8.0bpm and 111psi
Event	8	Shutdown	Shutdown	5/29/2016	08:26:32	COM4	35.00	3.92	2.30	
Event	9	Drop Top Plug	Drop Top Plug	5/29/2016	08:26:43	COM4	10.00	0.42	1.20	Released plug witnessed by company rep
Event	10	Pump Displacement	Pump Displacement	5/29/2016	08:28:12	COM4	-4.00	4.12	1.20	Pumped 117bbl of fresh water to displace cement
Event	11	Bump Plug	Bump Plug	5/29/2016	08:50:22	COM4	1470.00	7.64	0.30	Bumped plug 500psi over final pump pressure
Event	12	Pressure Up Well	Pressure Up Well	5/29/2016	08:50:41	COM4	1595.00	7.65	0.00	Pressure up well to test casing 1500 for 5min
Event	13	Other	Other	5/29/2016	08:55:20	COM4	1618.00	7.64	0.00	Released pressure back to pump truck. Approximately 1.5bbl back
Event	14	End Job	End Job	5/29/2016	09:04:12	USER				17bbl of cement back to surface

3.0 Attachments

3.1 Custom Results: Job Chart with Events



3.2 Custom Results: Job Chart without Events

