



Lat40°, Inc. 6250 W. 10th Street, Unit 2, Greeley, CO 970-515-5294

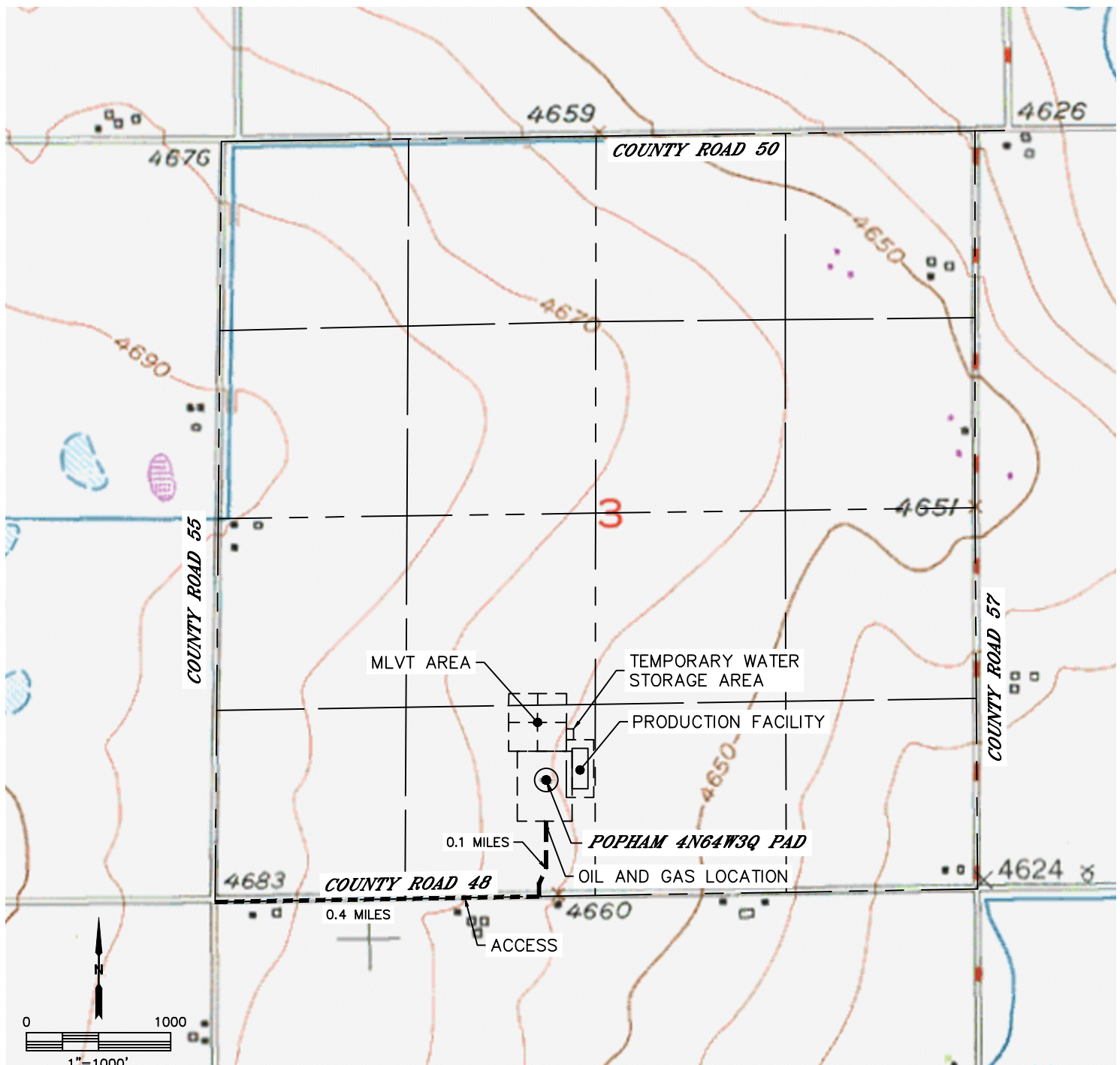
ACCESS ROAD MAP

POPHAM 4N64W3Q PAD

SECTION: 3
TOWNSHIP: 4N
RANGE: 64W
6TH. P.M.
WELD COUNTY, CO

DRIVING DIRECTIONS TO POPHAM 4N64W3Q PAD:

FROM THE INTERSECTION OF COUNTY ROAD 48 AND COUNTY ROAD 55 DRIVE EAST ALONG
COUNTY ROAD 48 FOR 0.4 MILES TO THE PROPOSED ACCESS ROAD, THENCE TURN NORTH AND DRIVE
ALONG PROPOSED ACCESS ROAD FOR 0.1 MILES TO THE PROPOSED DRILL PAD.





Lat40°, Inc. 6250 W. 10th Street, Unit 2, Greeley, CO 970-515-5294

ACCESS ROAD MAP

POPHAM 4N64W3Q PAD

SECTION: 3
TOWNSHIP: 4N
RANGE: 64W
6TH. P.M.
WELD COUNTY, CO

