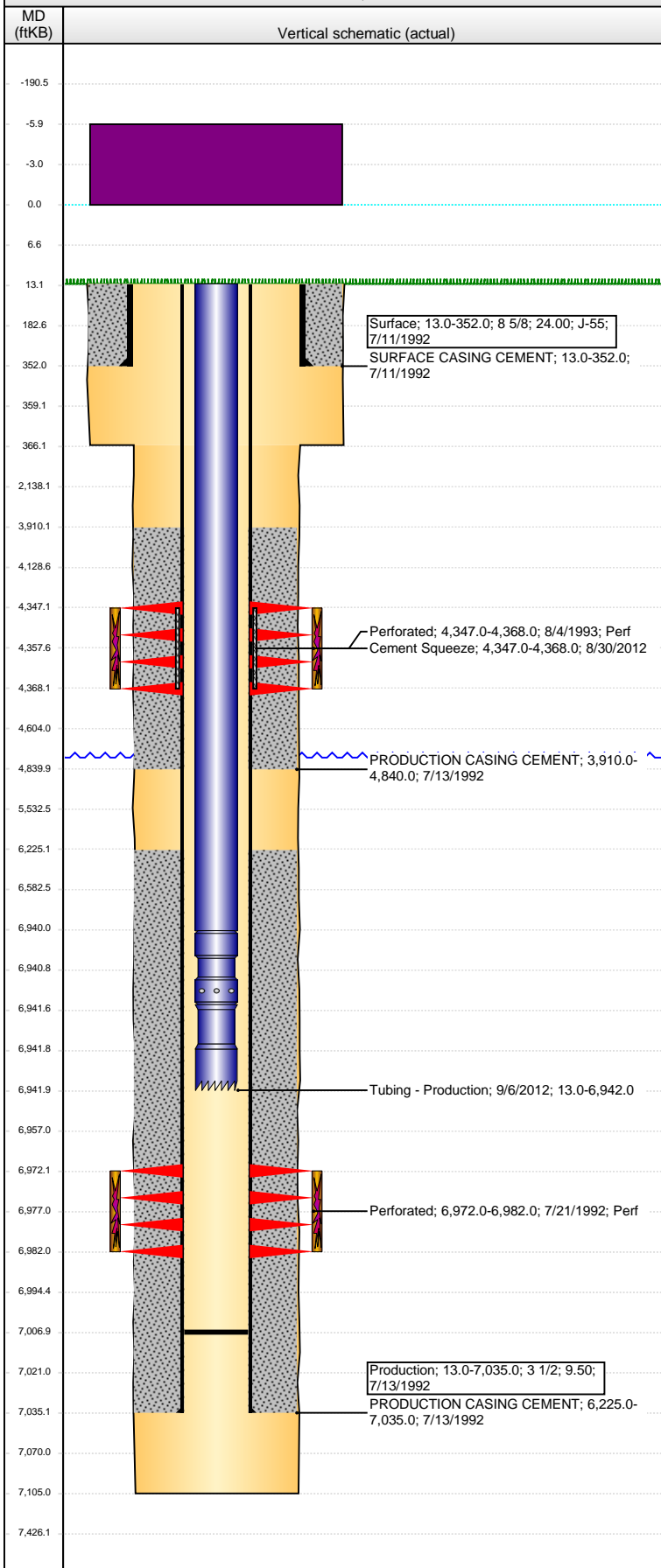


**Well Name: SPIKE STATE D16-05**

VERTICAL - ORIGINAL HOLE, 9/26/2016 9:29:06 AM



## Well Header

API 05-123-15908	Business Unit DJ BASIN	District 15	Well Config VERTICAL
Original KB Elevation (ft) 4,767	KB - GL / MSL (ftKB) 13.00	Spud Date 7/10/1992	P & A Date
Comment			

## Directions To Well

WCR 34 & WCR 53, EAST 100', SOUTH 0.3 INTO

## Congressional Location

Quarter 3 SW	Quarter 4 NW	Section 16	Township 3	Twnshp N/S Dir N	Range 64	Range E/W Dir W
-----------------	-----------------	---------------	---------------	---------------------	-------------	--------------------

## Bottom Hole Location

North-South Distance (ft)	From N or S Line	East-West Distance (ft)	From E or W Line
---------------------------	------------------	-------------------------	------------------

## Plug Back Total Depths

Date	Depth (ftKB)	Method	Com
7/13/1992	7,050.0	TAG	
1/26/2012	6,966.0	TAG	
1/31/2012	7,007.0	TUBING TALLY	LARGEAMOUNT OF SCALE IN THE WELL BORE.

## Wellbore Sections

Section Des	Size (in)	Act Top, MD (ftKB)	Act Btm, MD (ftKB)
SURFACE	12 1/4	13	366
PRODUCTION	7 7/8	366	7,105

## Zone Statuses

Zone Name	Status Date	Status	Fluid Type	Job	Prod Method
CODELL	10/1/1992	PR		DRILLING/CO...	
CODELL	8/4/1993	SI		RECOMPLETI...	
CODELL	8/13/1996	PR		RECOMPLETI...	
SUSSEX	9/23/1993	PR		RECOMPLETI...	
SUSSEX	8/13/1996	PR		RECOMPLETI...	
SUSSEX	8/30/2012	AB		REMEDIAL CE...	

## Casing Strings

### Surface, 352.0ftKB

Casing Description	Run Date	OD (in)	Wt/Len (l...)	Grade	Top, MD (ft...)	MD (ftKB)
Surface	7/11/1992	8 5/8	24.00	J-55	13.0	352.0

### Production, 7,035.0ftKB

Casing Description	Run Date	OD (in)	Wt/Len (l...)	Grade	Top, MD (ft...)	MD (ftKB)
Production	7/13/1992	3 1/2	9.50		13.0	7,035.0

## Cement

Description	Top Depth (ftKB)	Bottom Depth (ftKB)
SURFACE CASING CEMENT	13.0	352.0
PRODUCTION CASING CEMENT	3,910.0	4,840.0
PRODUCTION CASING CEMENT	6,225.0	7,035.0
Cement Squeeze	4,347.0	4,368.0

## Tubing Strings

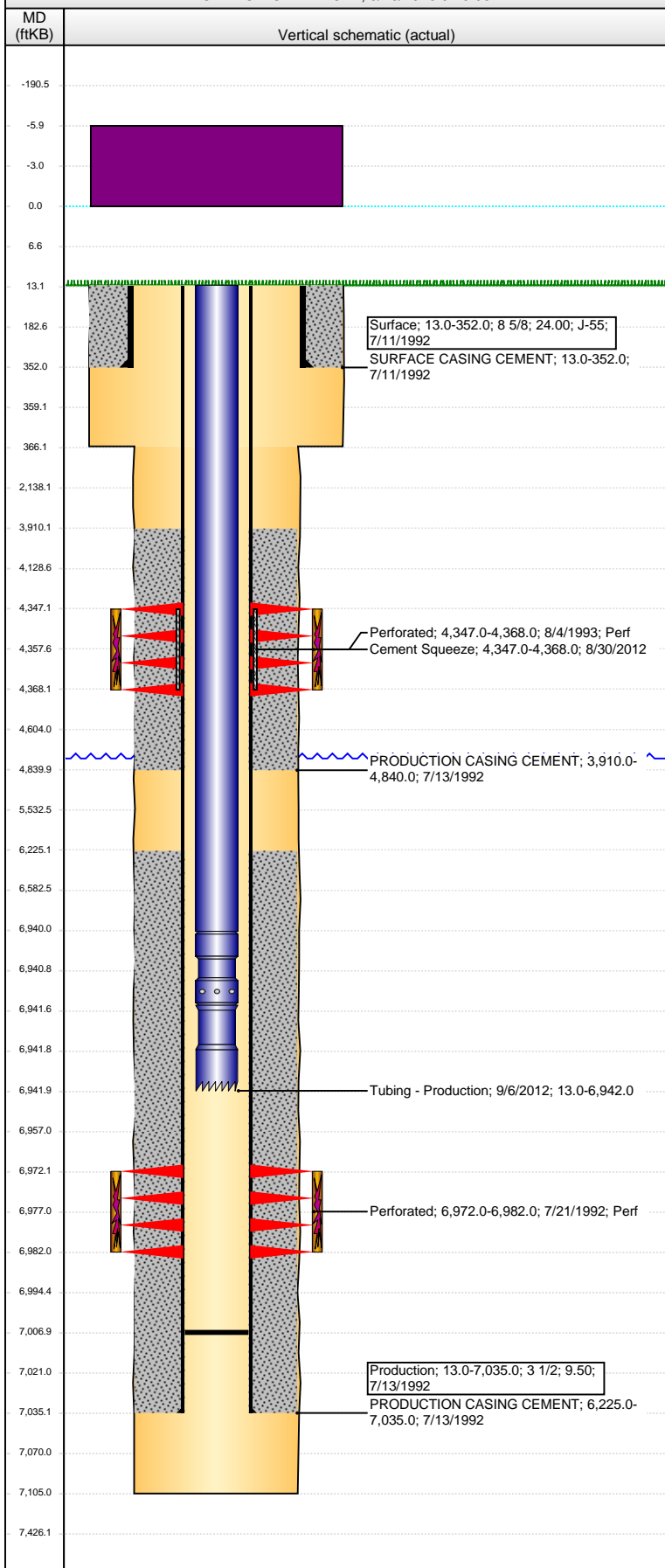
Tubing Description	Run Date	String...	ID (in)	Wt (lb/ft)	Grade	Len (ft)	Set De...
Tubing - Production	8/12/2005	2 1/16	1.751	3.25	J-55	4,480.00	
Tubing - Production	1/31/2012	2 1/16	1.751	3.25	J-55	6,926.04	
Tubing - Workstring	8/29/2012	2 3/8	1.995	4.70	L/N-80	4,064.00	
Tubing - Production	9/6/2012	2 1/16	1.751	3.25	J-55	6,929.00	

## Tubing Components

Item Des	OD (in)	Wt (lb/ft)	Grade	Jts	Len (ft)	Btm (ftKB)	Btm (TVD) (ftKB)
Tubing	2 1/16	3.25	J-55	214	6,927.00	6,940.0	
Seal Nipple	2 1/16	3.25	J-55	2	1.50	6,941.5	
Notched collar	2 1/16			0	0.50	6,942.0	

**Well Name: SPIKE STATE D16-05**

VERTICAL - ORIGINAL HOLE, 9/26/2016 9:29:08 AM



Perforation Data						
Zone		Bnch/St g	Entered Shot Total	Top (ftKB)	Btm (ftKB)	Date
SUSSEX, ORIGINAL HOLE			15	4,347.00	4,368.00	8/4/1993
CODELL, ORIGINAL HOLE			40	6,972.00	6,982.00	7/21/1992
Stimulations & Treatments						
Date	Zone		Primary Job Type			
7/23/1992	CODELL, ORIGINAL HOLE		DRILLING/COMPLETION - ORIGINAL			
Technical Result			Tech Result Details		Tech Result Note	
Comment						
Date	Zone		Primary Job Type			
8/5/1993	SUSSEX, ORIGINAL HOLE		RECOMPLETION			
Technical Result			Tech Result Details		Tech Result Note	
Comment						
Other In Hole						
Run Date		Des		OD (in)	Top (ftKB)	Btm (ftKB)
Logs						
Date	Type			Top, MD (ftKB)	Btm, MD (ftKB)	
7/13/1992	COMPENSATED DENSITY			4,200.0	7,085.0	
7/13/1992	INDUCTION			4,200.0	4,550.0	
7/21/1992	CBL/CCL/GR			4,200.0	4,550.0	