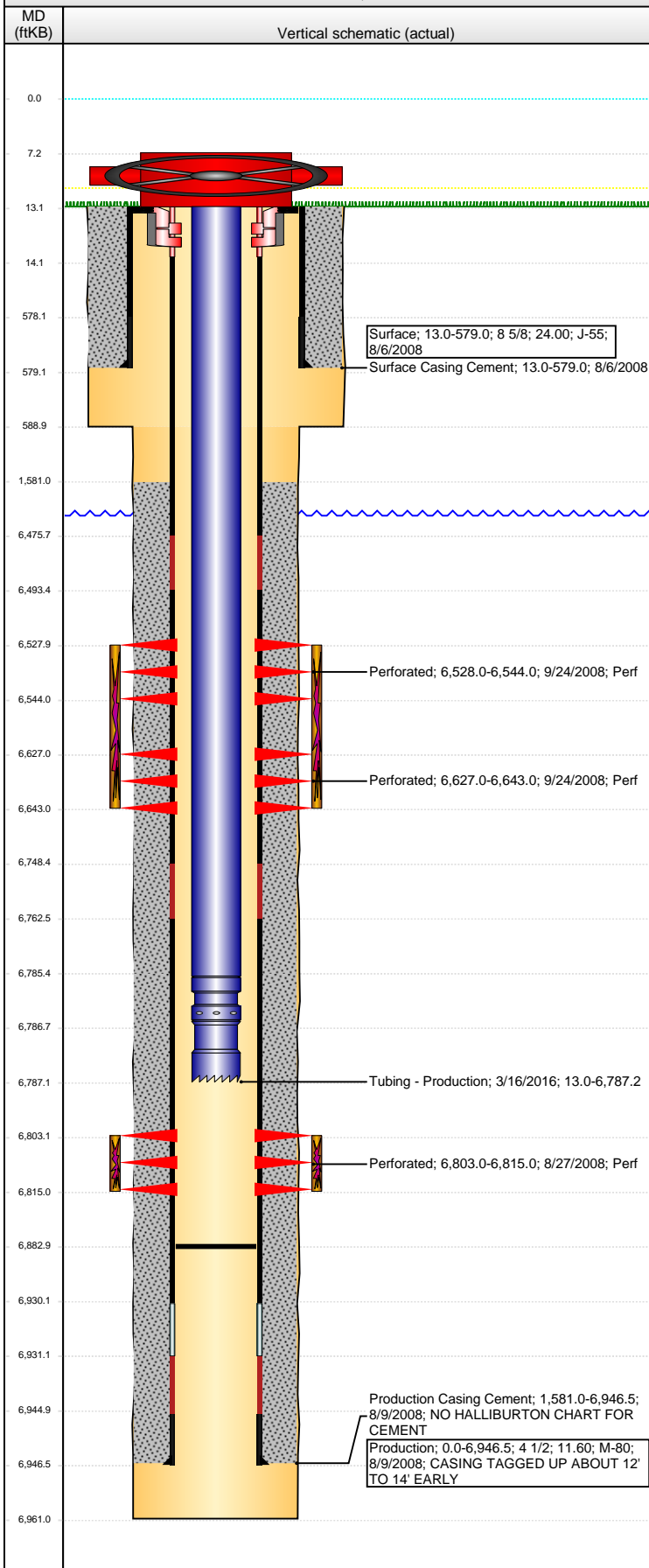


Well Name: WELLS RANCH USX AA11-14

VERTICAL - ORIGINAL HOLE, 9/16/2016 1:53:14 PM



Well Header

API	Business Unit	District	Well Config
05-123-27005	DJ BASIN	15	VERTICAL
Original KB Elevation (ft)	KB - GL / MSL (ftKB)	Spud Date	P & A Date
4,812	13.00	8/6/2008	
Comment			

Directions To Well

WCR 68 & WCR 69, NORTH 1 MILE, NORTHEAST .25 TO BATTERY, SOUTHEAST INTO.

Congressional Location

Quarter 3	Quarter 4	Section	Township	Twship N/S Dir	Range	Range E/W Dir
SE	SW	11	6	N	63	W

Bottom Hole Location

North-South Distance (ft)	From N or S Line	East-West Distance (ft)	From E or W Line

Plug Back Total Depths

Date	Depth (ftKB)	Method	Com
8/9/2008	6,931.2	CASING TALLY	CASING TAGGED UP 12' TO 14' EARLY
8/22/2008	6,913.0	CASED HOLE LOG	
11/18/2008	6,931.0	TUBING TALLY	DRILL CIFT P W/ BURN SHOE AND CHASE DOW...
7/24/2015	6,883.0	96' OF TAG JTS	DID NOT TAG MIN 68' RAT HOLE

Wellbore Sections

Section Des	Size (in)	Act Top, MD (ftKB)	Act Btm, MD (ftKB)
SURFACE	12 1/4	13	589
PRODUCTION	7 7/8	589	6,961

Zone Statuses

Zone Name	Status Date	Status	Fluid Type	Job	Prod Method
CODELL	9/29/2008	PR		DRILLING/CO...	
CODELL	7/27/2015	TA		HORIZONTAL...	
CODELL	3/16/2016	PR		HORIZONTAL...	
NIOBRARA	9/29/2008	PR		DRILLING/CO...	
NIOBRARA	7/27/2015	TA		HORIZONTAL...	
NIOBRARA	3/16/2016	PR		HORIZONTAL...	

Casing Strings

Surface, 579.0ftKB

Casing Description	Run Date	OD (in)	Wt/Len (l...)	Grade	Top, MD (ft...)	MD (ftKB)
Surface	8/6/2008	8 5/8	24.00	J-55	13.0	579.0

Production, 6,946.5ftKB

Casing Description	Run Date	OD (in)	Wt/Len (l...)	Grade	Top, MD (ft...)	MD (ftKB)
Production	8/9/2008	4 1/2	11.60	M-80	0.0	6,946.5

Cement

Description	Top Depth (ftKB)	Bottom Depth (ftKB)
Surface Casing Cement	13.0	579.0
Description	Top Depth (ftKB)	Bottom Depth (ftKB)
Production Casing Cement	1,581.0	6,946.5

Tubing Strings

Tubing Description	Run Date	String...	ID (in)	Wt (lb/ft)	Grade	Len (ft)	Set De...
Tubing - Production	11/19/2008	2 3/8	1.995	4.70	J-55	6,775.80	
Tubing Description	Run Date	String...	ID (in)	Wt (lb/ft)	Grade	Len (ft)	Set De...
Tubing - Production	7/24/2015	2 3/8	1.995	4.70	J-55	5,834.13	
Tubing Description	Run Date	String...	ID (in)	Wt (lb/ft)	Grade	Len (ft)	Set De...
Tubing - Production	3/16/2016	2 3/8	1.995	4.70	J-55	6,774.15	

Tubing Components

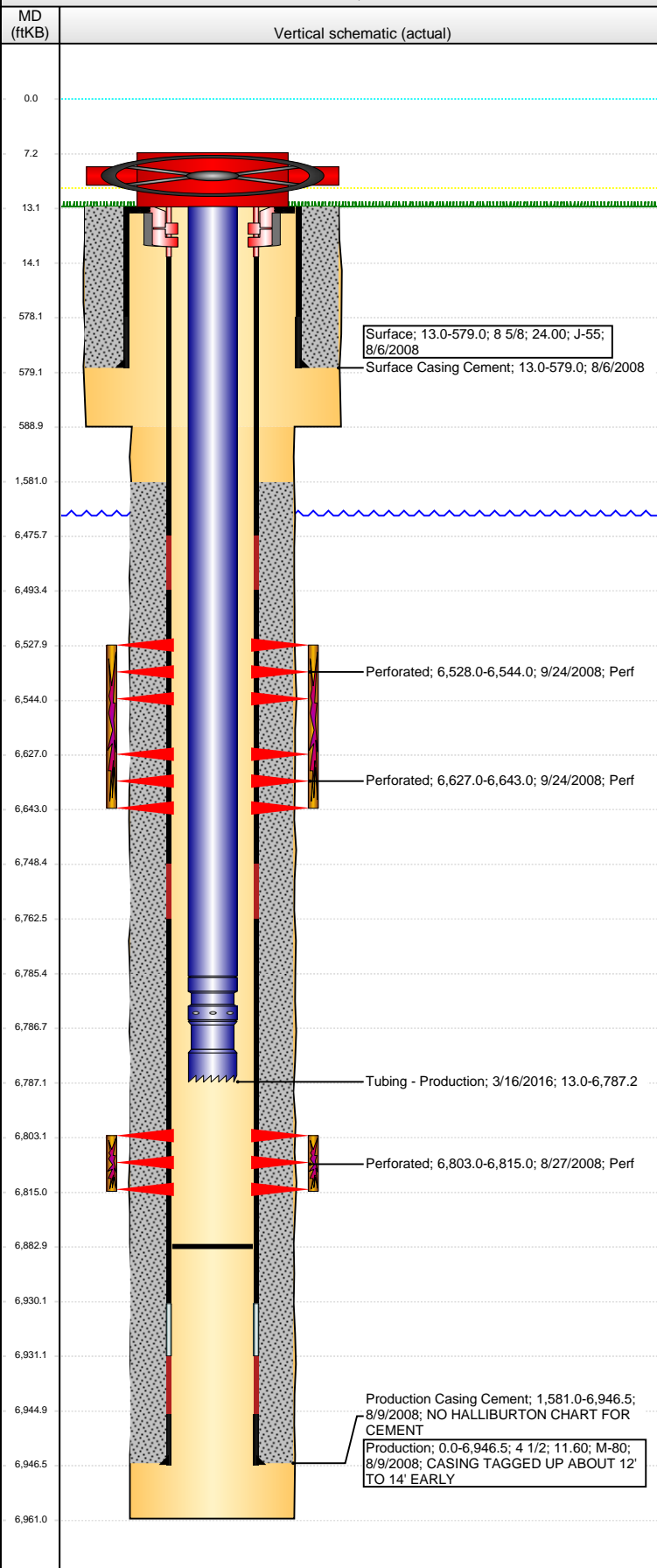
Item Des	OD (in)	Wt (lb/ft)	Grade	Jts	Len (ft)	Btm (ftKB)	Btm (TVD) (ftKB)
EUE 8rd Tubing	2 3/8	4.70	J-55	218	6,772.50	6,785.5	
Pump Seating Nipple	2 3/8	1.10		1	1.10	6,786.6	
Notched collar	2 3/8			1	0.55	6,787.2	

Perforation Data

Zone	Bnch/St g	Entered Shot Total	Top (ftKB)	Btm (ftKB)	Date
NIOBRARA, ORIGINAL HOLE	A	32	6,528.00	6,544.00	9/24/2008
NIOBRARA, ORIGINAL HOLE	B	32	6,627.00	6,643.00	9/24/2008
CODELL, ORIGINAL HOLE		48	6,803.00	6,815.00	8/27/2008

Well Name: WELLS RANCH USX AA11-14

VERTICAL - ORIGINAL HOLE, 9/16/2016 1:53:17 PM



Stimulations & Treatments

Date	Zone	Primary Job Type
9/24/2008	CODELL, ORIGINAL HOLE	DRILLING/COMPLETION - ORIGINAL
Technical Result	Tech Result Details	Tech Result Note
Success	According to Plan	

Comment
PRE-ISIP = 2752 PSI, 5-MIN = 2417 PSI. 22 OF 48 PERFS OPEN, 474 NWB FRICTION, 71 PSI PERF FRICTION, AND 749 PSI TOTAL FRICTION. TREATMENT EXHIBITED A SLIGHTLY NEGATIVE TREND. POST JOB ISIP = 2882 PSI, 5-MIN = 2792 PSI.

Date	Zone	Primary Job Type
9/24/2008	NIORARA, ORIGINAL HOLE	DRILLING/COMPLETION - ORIGINAL
Technical Result	Tech Result Details	Tech Result Note
Success	According to Plan	

Comment
SLICKWATER PAD- ISIP (161 BBL) = 2772 PSI, 5-MIN = 2675 PSI, 20-MIN = 2630 PSI. WAITED ON OTHER JOB WITH IFS COMPUTER ISSUES. TREATMENT EXHIBITED A RELATIVELY FLAT TREND. POST ISIP = 2942 PSI, 5-MIN = 2816 PSI. TURN ON IN 48 MINUTES 2750 PSI.

Other In Hole

Run Date	Des	OD (in)	Top (ftKB)	Btm (ftKB)

Logs

Date	Type	Top, MD (ftKB)	Btm, MD (ftKB)
8/9/2008	Caliper/Comp. Density/Neutron/GR/SP/ML	2,750.0	6,959.0
8/9/2008	DIL/GR/SP/Caliper	579.0	6,959.0
8/22/2008	CBL/CCL/GR	1,439.0	6,912.0