

HALLIBURTON

iCem® Service

SYNERGY RESOURCES CORPORATION

For: Tim Shaw

Date: Tuesday, September 06, 2016

903525162 Synergy P&A

Case 1

Job Date: Tuesday, September 06, 2016

Sincerely,

Brad Hinkle and Crew

1.0 Real-Time Job Summary

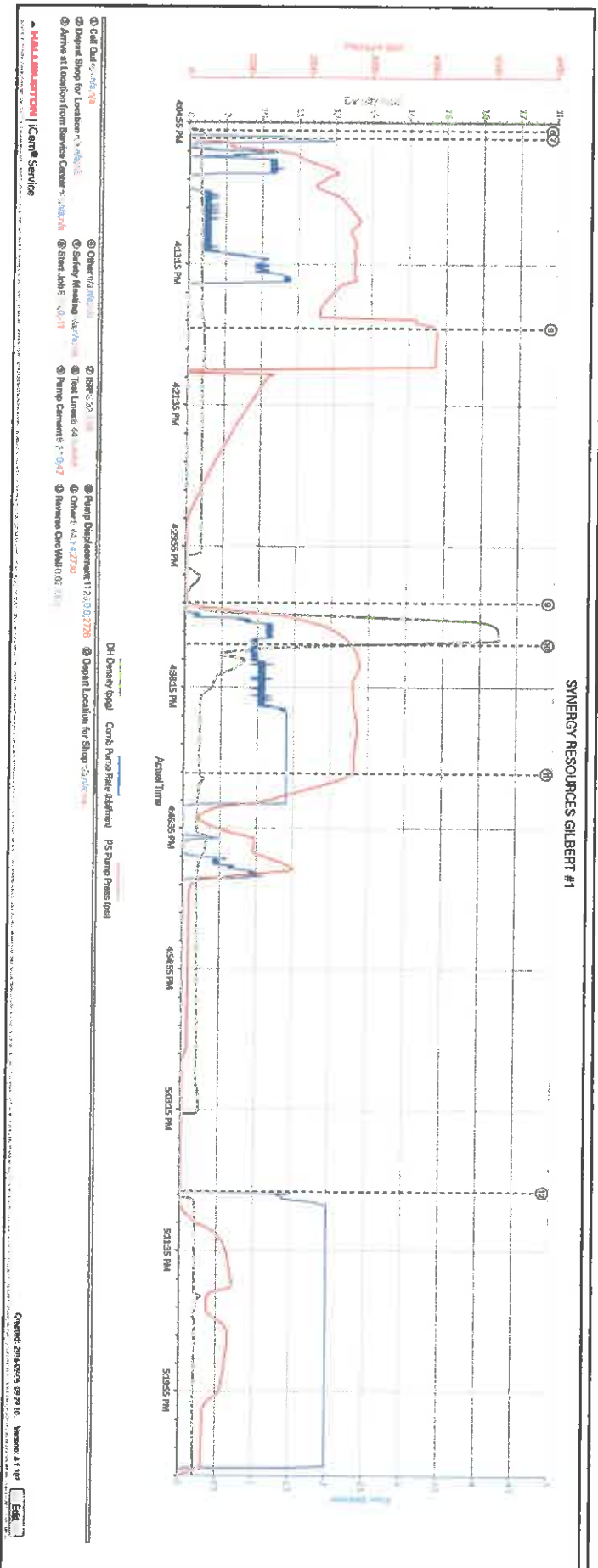
1.1 Job Event Log

Type	Seq. No.	Activity	Graph Label	Date	Time	Source	DH Density (ppg)	Comb Pump Rate (bbl/min)	PS Pump Press (psi)	Comments
Event	1	Call Out	Call Out	9/6/2016	07:00:00	USER				Call out for an O/L of 1200. Job pushed to 1400. Crew was Bradley Hinkle, Nathaniel Moore, Prince Perez and Chris Simon.
Event	2	Depart Shop for Location	Depart Shop for Location	9/6/2016	12:00:00	USER				Pre-journey safety meeting.
Event	3	Arrive at Location from Service Center	Arrive at Location from Service Center	9/6/2016	13:00:00	USER				Perform a site assessment and pre rig-up safety meeting. Rig still coming out of hole with tubing. Then installed retainer and went back into hole.
Event	4	Other	Other	9/6/2016	13:05:00	USER				Check in with customer and get numbers. Retainer set at 7240' with perforations at 7308' and 7325'. Customer request 1.6 bbls (8 sacks) below retainer and 1 bbl (5 sacks) above retainer. 2.375" 4.7# Tubing set inside 4.5" 11.6# casing.
Event	5	Safety Meeting	Safety Meeting	9/6/2016	13:55:00	USER				Pre-job safety meeting with all personnel on location.
Event	6	Start Job	Start Job	9/6/2016	16:05:30	COM/5	8.33	0.00	-11.00	
Event	7	ISIP	ISIP	9/6/2016	16:05:57	USER	8.35	2.00	17.00	Pump 10 bbls to establish injection rate. ISIP at 2800 PSI. Injection rate at 1.4 bbls/ minute at 2700 PSI.

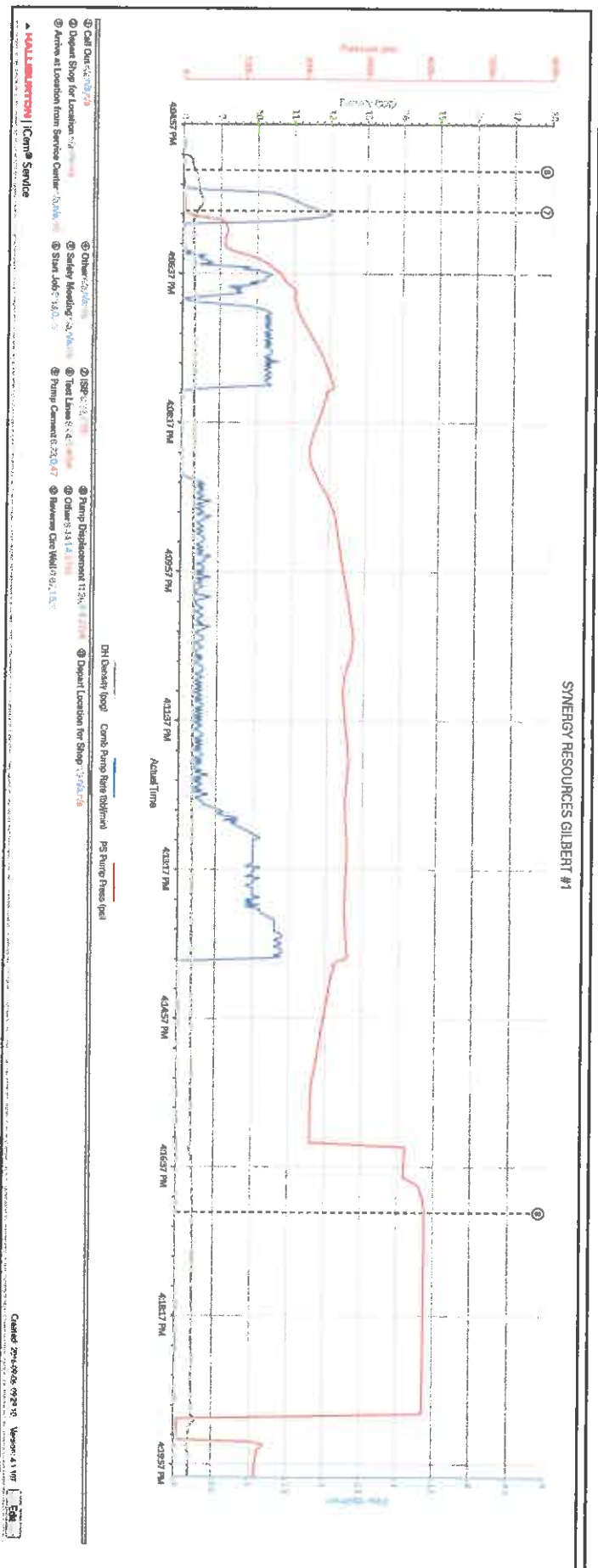
Event	8	Test Lines	Test Lines	9/6/2016	16:17:09	COM5	8.44	0.00	4057.00	Pressure test lines to 4055 PSI.
Event	9	Pump Cement	Pump Cement	9/6/2016	16:33:22	COM5	8.16	0.00	41.00	Pump 2.6 bbls (13 sacks) G-Neat cement with Retarder added.
Event	10	Pump Displacement	Pump Displacement	9/6/2016	16:35:49	COM5	11.46	0.90	2724.00	Pump 13 bbls fresh water.
Event	11	Other	Other	9/6/2016	16:43:27	USER	8.43	1.40	2736.00	Observed pressure drop and returns at the pits indicating a possible hole in the tubing. Shutdown and decided to reverse circulate cement back out of tubing to pits.
Event	12	Reverse Circ Well	Reverse Circ Well	9/6/2016	17:08:12	USER	0.67	1.50	2.00	Reverse circulate 30 bbls of fresh water. Observed cement water at 13 bbls away. Thicker cement observed at 18 bbls away and fresh water seen at 23 bbls away.
Event	13	Depart Location for Shop	Depart Location for Shop	9/6/2016	18:30:00	USER				Pre-journey safety meeting and departure to the yard.

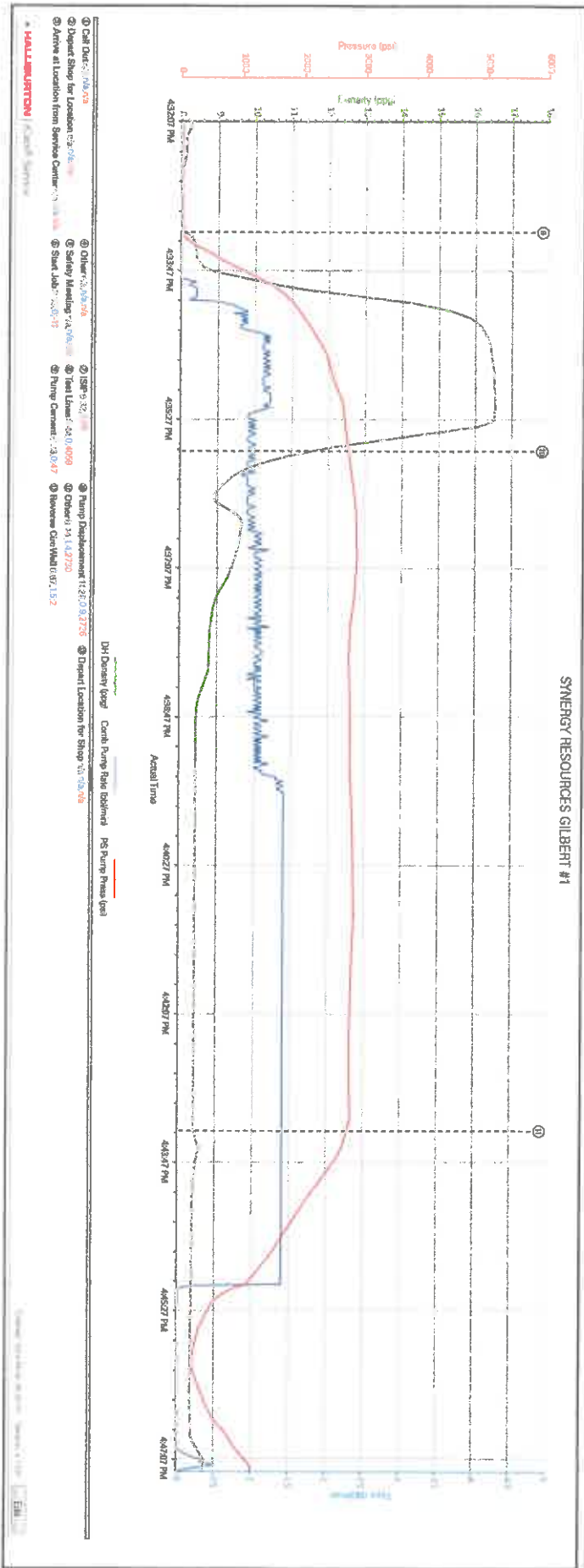
2.0 Attachments

2.1 Synergy Gilbert #1.png



2.2 ISIP, Injection Rate and Pressure Test.png





2.4 Reverse Circulate.png

