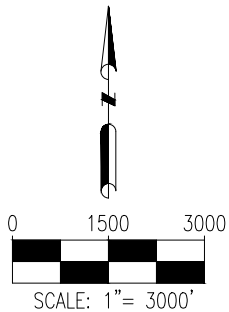
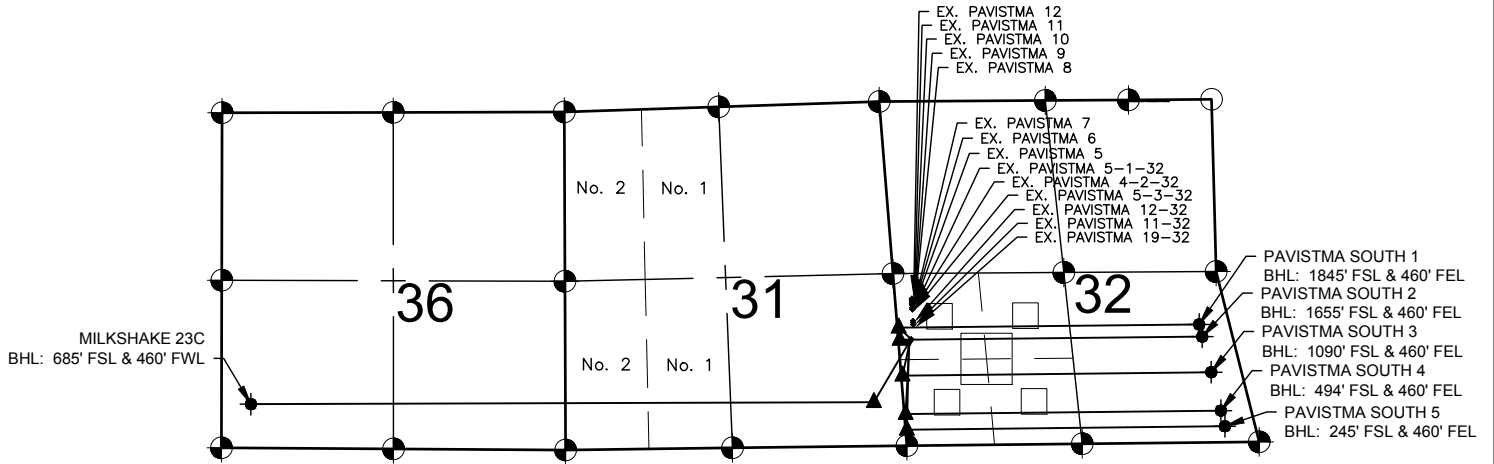


PAVISTMA SOUTH PAD MULTI-WELL PLAN



LEGEND

- = EXISTING MONUMENT
- = CALCULATED POSITION
- = PROPOSED WELL
- ◆ = EXISTING WELL
- = BOTTOM HOLE
- ▲ = LANDING POINT
- LP = LANDING POINT
- BHL = BOTTOM HOLE

NOTES:

- THIS FIELD SURVEY CONFORMS TO THE MINIMUM STANDARDS SET BY THE C.O.G.C., RULE NO. 215

NOTES:

- MILKSHAKE 23C TO BE AT 1597' FSL & 153' FWL.
- BOTTOM HOLE AT 685' FSL & 460' FWL, SEC. 36, T6N, R68W.
- EX. PAVISTMA SOUTH 5 IS AT 1610' FSL & 162' FWL.
- BOTTOM HOLE AT 245' FSL & 460' FEL.
- EX. PAVISTMA SOUTH 4 IS AT 1624' FSL & 171' FWL.
- BOTTOM HOLE AT 494' FSL & 460' FEL.
- EX. PAVISTMA SOUTH 3 IS AT 1637' FSL & 181' FWL.
- BOTTOM HOLE AT 1090' FSL & 460' FEL.
- EX. PAVISTMA SOUTH 2 IS AT 1650' FSL & 191' FWL.
- BOTTOM HOLE AT 1655' FSL & 460' FEL.
- EX. PAVISTMA SOUTH 1 IS AT 1664' FSL & 200' FWL.
- BOTTOM HOLE AT 1845' FSL & 460' FEL.

PREPARED BY:



FIELD DATE:

03-22-16

DRAWING DATE:

08-29-16

BY:

CSG

CHECKED BY:

KLA

SITE NAME:

PAVISTMA SOUTH PAD

SURFACE LOCATION:

NW 1/4 SW 1/4 SEC. 32, T6N, R67W, 6TH P.M.
WELD COUNTY, COLORADO

PREPARED FOR:

