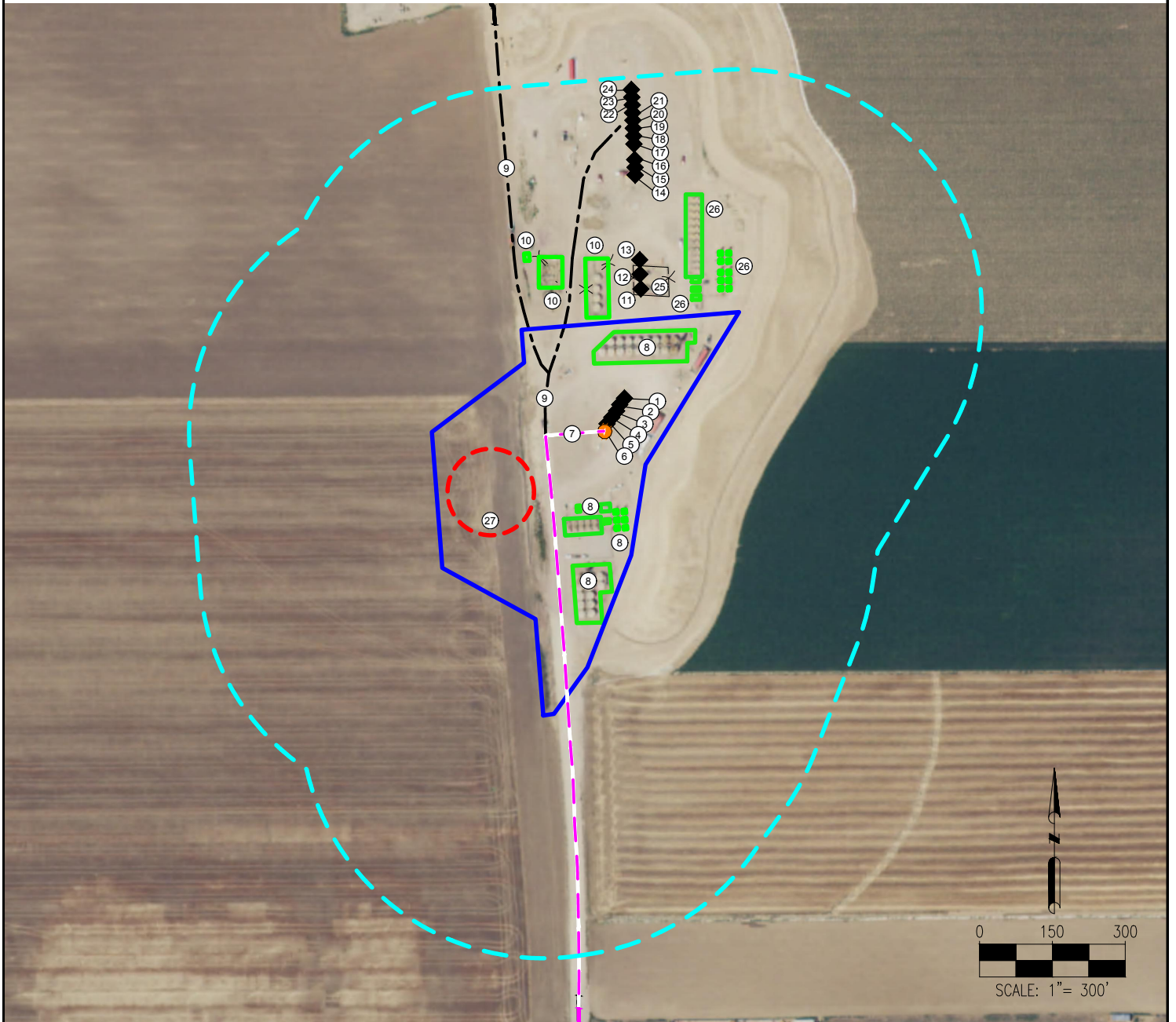


PAVISTMA SOUTH PAD LOCATION DRAWING



- | | | | |
|---|--|---|-------------------|
| 1. PAVISTMA SOUTH 1 | 10. EXISTING FACILITIES (Kerr Mcgee Oil & Gas Onshore LP) ARE ±169' NW, ±261' NW, ±344' NW | 18. PAVISTMA 6 (Extraction Oil & Gas LLC) ±540' N | 27. PROPOSED MLVT |
| 2. PAVISTMA SOUTH 2 | 11. PAVISTMA 19-32 (Kerr Mcgee Oil & Gas Onshore LP) ±227' NE | 19. PAVISTMA 7 (Extraction Oil & Gas LLC) ±556' N | |
| 3. PAVISTMA SOUTH 3 | 12. PAVISTMA 11-32 (Kerr Mcgee Oil & Gas Onshore LP) ±257' NE | 20. PAVISTMA 8 (Extraction Oil & Gas LLC) ±572' N | |
| 4. PAVISTMA SOUTH 4 | 13. PAVISTMA 12-32 (Kerr Mcgee Oil & Gas Onshore LP) ±287' NE | 21. PAVISTMA 9 (Extraction Oil & Gas LLC) ±588' N | |
| 5. PAVISTMA SOUTH 5 | 14. PAVISTMA 5-3-32 (Extraction Oil & Gas LLC) ±460' N | 22. PAVISTMA 10 (Extraction Oil & Gas LLC) ±604' N | |
| 6. MILKSHAKE 23C | 15. PAVISTMA 4-2-32 (Extraction Oil & Gas LLC) ±476' N | 23. PAVISTMA 11 (Extraction Oil & Gas LLC) ±620' N | |
| 7. PROPOSED ACCESS ROAD | 16. PAVISTMA 5-1-32 (Extraction Oil & Gas LLC) ±492' N | 24. PAVISTMA 12 (Extraction Oil & Gas LLC) ±635' N | |
| 8. EXISTING FACILITIES (Extraction Oil & Gas LLC) | 17. PAVISTMA 5 (Extraction Oil & Gas LLC) ±524' N | 25. FENCE IS ±214' N | |
| 9. EXISTING ACCESS ROADS ARE ±161' W, ±164' NW | | 26. EXISTING FACILITIES (EXTRACTION OIL & GAS LLC) ARE ±246' NE, ±280' NE, ±296' NE | |

LEGEND:

- | | | |
|--------------------------|-----------------------|----------------------|
| — = PROPOSED ACCESS ROAD | — = EXISTING ROAD | — = DISTURBANCE AREA |
| ● = PROPOSED WELL | —X—X—X— = FENCE | — = 500' RADIUS |
| ◆ = PRODUCING WELL | — = EXISTING FACILITY | — = PROPOSED MLVT |

MEASURED FROM NEAREST WELL OR FACILITY:

- | | |
|-----------------------------------|-----------|
| BUILDING | ±904' SE |
| BUILDING UNIT | ±904' SE |
| PUBLIC ROAD (COUNTY ROAD 62) | ±1184' S |
| PROPERTY LINE (VIMA PARTNERS LLC) | ±33' S |
| UTILITY (POWERLINE) | ±1265' S |
| RAILROAD | >5280' SE |

MEASURED FROM NEAREST EDGE OF DISTURBANCE:

- | | |
|--------------------------------|-----------|
| SURFACE WATER (CONCRETE DITCH) | ±1162' SE |
|--------------------------------|-----------|

MEASURED FROM NEAREST WELL:

- | | | |
|----------------|-----------|------------------|
| WATER WELL | ±1414' SE | SWL = 0' |
| PERMIT: 262798 | | RECEIPT: 0535779 |
| WATER WELL | ±4076' NE | SWL = 63' |
| PERMIT: 63272 | | RECEIPT: 9064998 |

REFERENCE LOCATION

****PAVISTMA SOUTH 1****

LAT: 40.44053°
 LONG: -104.92479°
 ELEVATION: 4953'
 1665' FSL & 200' FWL
 PDOP: 1.7
 GPS OPERATOR: WYATT HALL

DISCLAIMER:
 THIS PLOT DOES NOT REPRESENT A MONUMENTED LAND SURVEY AND SHOULD NOT BE RELIED UPON TO DETERMINE BOUNDARY LINES, PROPERTY OWNERSHIP OR OTHER PROPERTY INTERESTS. PARCEL LINES, IF DEPICTED HAVE NOT BEEN FIELD VERIFIED AND MAY BE BASED UPON PUBLICLY AVAILABLE DATA THAT ALSO HAS NOT BEEN INDEPENDENTLY VERIFIED.

DATA SOURCE:
 AERIAL IMAGERY: NAIP 2015
 WATER WELLS: COLORADO DWR
 NHD: USGS
 PUBLICLY AVAILABLE DATA SOURCES HAVE NOT BEEN INDEPENDENTLY VERIFIED BY PFS.

DISTURBANCE ACREAGE:

5.96 ACRES DRILLING OPERATIONS
 4.30 ACRES INTERIM RECLAIM
 CURRENT SURFACE USE: DRY LAND CROP
 FUTURE SURFACE USE: DRY LAND CROP

PREPARED BY:



FIELD DATE:
02-26-13

DRAWING DATE:
08-22-16

BY:
CSG

CHECKED BY:
KLA

SITE NAME:

PAVISTMA SOUTH PAD

SURFACE LOCATION:

NW 1/4 SW 1/4 SEC. 32, T6N, R67W, 6TH P.M.
 WELD COUNTY, COLORADO

PREPARED FOR:

