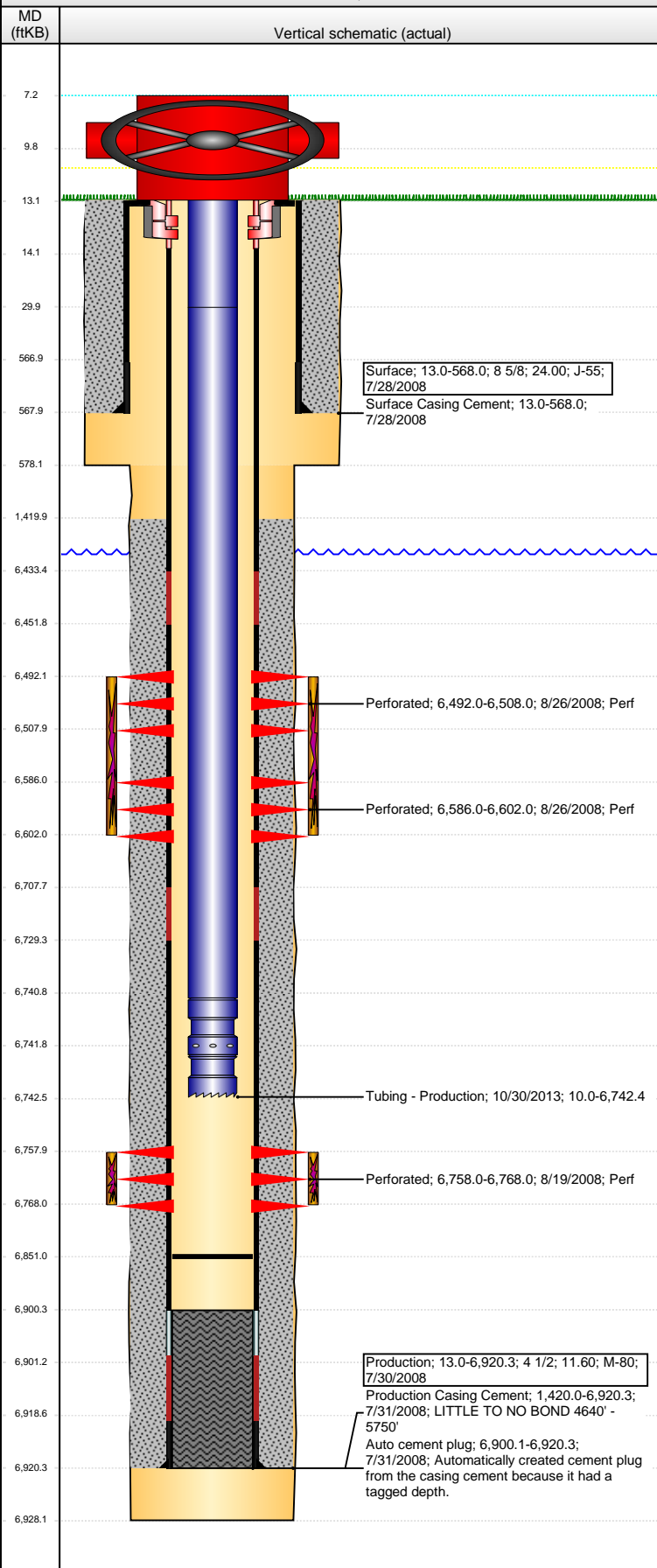


Well Name: WELLS RANCH USX AA13-06

VERTICAL - ORIGINAL HOLE, 9/22/2016 2:23:53 PM



Well Header

API 05-123-26966	Business Unit DJ BASIN	District 15	Well Config VERTICAL
Original KB Elevation (ft) 4,809	KB - GL / MSL (ftKB) 13.00	Spud Date 7/28/2008	P & A Date

Comment

Directions To Well

WCR 68 & 67, EAST 2.25 MILE, NORTH 0.75 MILE. SOUTHEAST INTO.

Congressional Location

Quarter 3 SE	Quarter 4 NW	Section 13	Township 6 N	Twnshp N/S Dir N	Range 63 W	Range E/W Dir W
-----------------	-----------------	---------------	-----------------	---------------------	---------------	--------------------

Bottom Hole Location

North-South Distance (ft)	From N or S Line	East-West Distance (ft)	From E or W Line
---------------------------	------------------	-------------------------	------------------

Plug Back Total Depths

Date	Depth (ftKB)	Method	Com
7/30/2008	6,900.1	CASING TALLY	TOP OF FLOAT COLLAR
8/14/2008	6,865.0	CASED HOLE LOG	DEPTH LOGGER ON CBL
9/3/2008	6,849.0	TUBING TALLY	DRILL CIFT W/ SHOE AND CHASE DOWN TO 68...
11/2/2011	6,847.1	TUBING TALLY	
9/24/2013	6,874.0	TAG	
10/29/2013	6,851.0	TAG	

Wellbore Sections

Section Des	Size (in)	Act Top, MD (ftKB)	Act Btm, MD (ftKB)
SURFACE	12 1/4	13	578
PRODUCTION	7 7/8	578	6,928

Zone Statuses

Zone Name	Status Date	Status	Fluid Type	Job	Prod Method
CODELL	9/22/2008	PR		DRILLING/CO...	
NIOBRARA	9/22/2008	PR		DRILLING/CO...	

Casing Strings

Surface, 568.0ftKB

Casing Description	Run Date	OD (in)	Wt/Len (l...)	Grade	Top, MD (ft...)	MD (ftKB)
Surface	7/28/2008	8 5/8	24.00	J-55	13.0	568.0

Production, 6,920.3ftKB

Casing Description	Run Date	OD (in)	Wt/Len (l...)	Grade	Top, MD (ft...)	MD (ftKB)
Production	7/30/2008	4 1/2	11.60	M-80	13.0	6,920.3

Cement

Description	Top Depth (ftKB)	Bottom Depth (ftKB)
Surface Casing Cement	13.0	568.0
Description	Top Depth (ftKB)	Bottom Depth (ftKB)
Production Casing Cement	1,420.0	6,920.3

Tubing Strings

Tubing Description	Run Date	String...	ID (in)	Wt (lb/ft)	Grade	Len (ft)	Set De...
Tubing - Production	9/3/2008	2 3/8	1.995	4.70	J-55	6,466.72	
Tubing - Production	11/2/2011	2 3/8	1.995	4.70	J-55	6,728.66	
Tubing - Production	10/30/2013	2 3/8	1.995	4.70	J-55	6,732.42	

Tubing Components

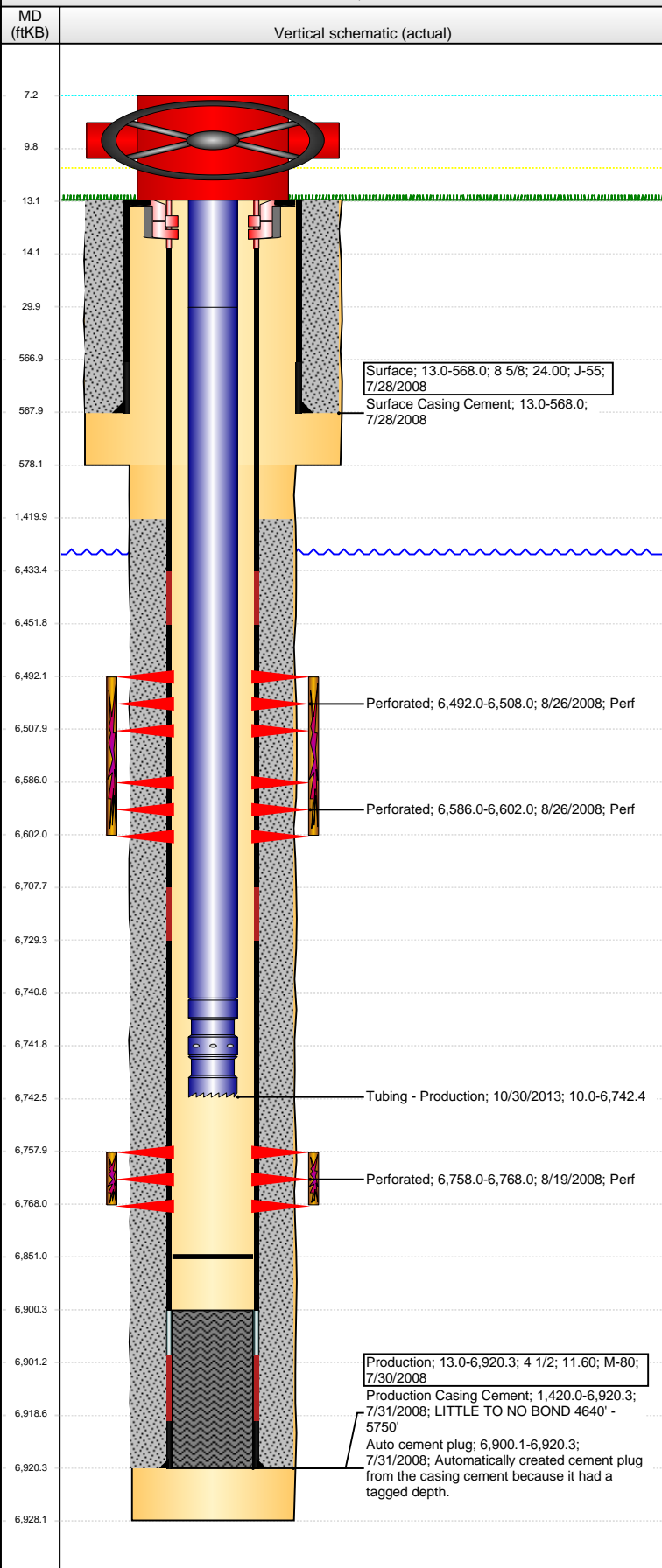
Item Des	OD (in)	Wt (lb/ft)	Grade	Jts	Len (ft)	Btm (ftKB)	Btm (TVD) (ftKB)
EUE 8rd Tubing	2 3/8	4.70	J-55	2	20.00	30.0	
EUE 8rd Tubing	2 3/8	4.70	J-55	218	6,710.92	6,740.9	
Seal Nipple	2 3/8			1	1.00	6,741.9	
Notched collar	2 3/8			1	0.50	6,742.4	

Perforation Data

Zone	Bnch/St g	Entered Shot Total	Top (ftKB)	Btm (ftKB)	Date
NIOBRARA, ORIGINAL HOLE	A	64	6,492.00	6,508.00	8/26/2008
NIOBRARA, ORIGINAL HOLE	B	64	6,586.00	6,602.00	8/26/2008
CODELL, ORIGINAL HOLE		40	6,758.00	6,768.00	8/19/2008

Well Name: WELLS RANCH USX AA13-06

VERTICAL - ORIGINAL HOLE, 9/22/2016 2:23:56 PM



Stimulations & Treatments

Date	Zone	Primary Job Type
8/26/2008	CODELL, ORIGINAL HOLE	DRILLING/COMPLETION - ORIGINAL
Technical Result	Tech Result Details	Tech Result Note
Success	According to Plan	

Comment
CODELL: POST JOB 5 MINUTE OF 2328 PSI RAISED THE FRACTURE RATE TO 22 BPM REVERSE STEP RATE RESULTS PO 9 NWB 326 PSI WB 266 PSI PPF 418 PSI FOR A TOTAL OF 1010 PSI OF FRICTION TREATMENT WENT WELL HAD A COUPLE OF ISSUES WITH THE FRAC VAN AND NOT BEING ABLE TO READ SOME PARAMETERS AVG VISC 27.9 CPS AVG TEMP 69.6F AVG PH 10.21 POST JOB 5 MINUTE OF 2957 PSI

Date	Zone	Primary Job Type
8/26/2008	NIOBRARA, ORIGINAL HOLE	DRILLING/COMPLETION - ORIGINAL
Technical Result	Tech Result Details	Tech Result Note
Success	According to Plan	

Comment
NIOBRARA: TREATMENT WENT WELL WAITED FOR HHP TO SHOW FROM OTHER HALLIBURTON LOCATION THEN HAD TO BRING A PUMP OFF LINE AND GET GEARS WITH OTHER PUMPS AVG VISC 23.4 CPS AVG TEMP 75.4 AVG PH 10.22 POST JOB 5 MINUTE 2831 PSI

Other In Hole

Run Date	Des	OD (in)	Top (ftKB)	Btm (ftKB)

Logs

Date	Type	Top, MD (ftKB)	Btm, MD (ftKB)
7/30/2008	Caliper/Comp. Density/Neutron/GR/SP/ML	2,760.0	6,928.0
7/30/2008	DIL/GR/SP/Caliper	568.0	6,928.0
8/14/2008	CBL/CCL/GR	1,290.0	6,858.0
7/27/2011	GYRO	13.0	6,450.0