

T7N, R80W, 6th P.M.

SandRidge Exploration & Production, LLC

Well 1 location, Castle 0780 5-17H20 located as shown in the SW1/4SW1/4 of Section 9, T7N, R80W, 6th P.M., Jackson County, Colorado.

BASIS OF BEARINGS:
US STATE PLANE 1983
CO NORTH 0501 GRID

BASIS OF ELEVATION

SPOT ELEVATION AT THE NW CORNER OF SECTION 9, T7N, R80W, 6TH PM, TAKEN FROM THE COALMONT QUADRANGLE, USGS 7.5 MIN QUAD (TOPOGRAPHIC MAP) WITH SAID ELEVATION MARKED AS BEING 8091 FEET.

GRAPHIC SCALE 1"=1000'

1000 0 1000



I, RANDALL R. MILLER, BEING A REGISTERED LAND SURVEYOR IN THE STATE OF COLORADO, DO HEREBY CERTIFY THAT THE FIELD MEASUREMENTS MADE BY ME AND/OR UNDER MY DIRECT SUPERVISION AND THAT THIS IS ACCURATE TO THE BEST OF MY KNOWLEDGE.

DATED THIS _____ DAY OF _____

RANDALL R. MILLER, COLORADO PLS NO. 38084



NORTH PARK ENGINEERING & CONSULTING, INC.
P.O. BOX 395
WALDEN, CO 80480
(970) 723-3725

DATE OF FIELD WORK: FEB 19, 2016
DRAWING COMPLETION: MAR 16, 2016

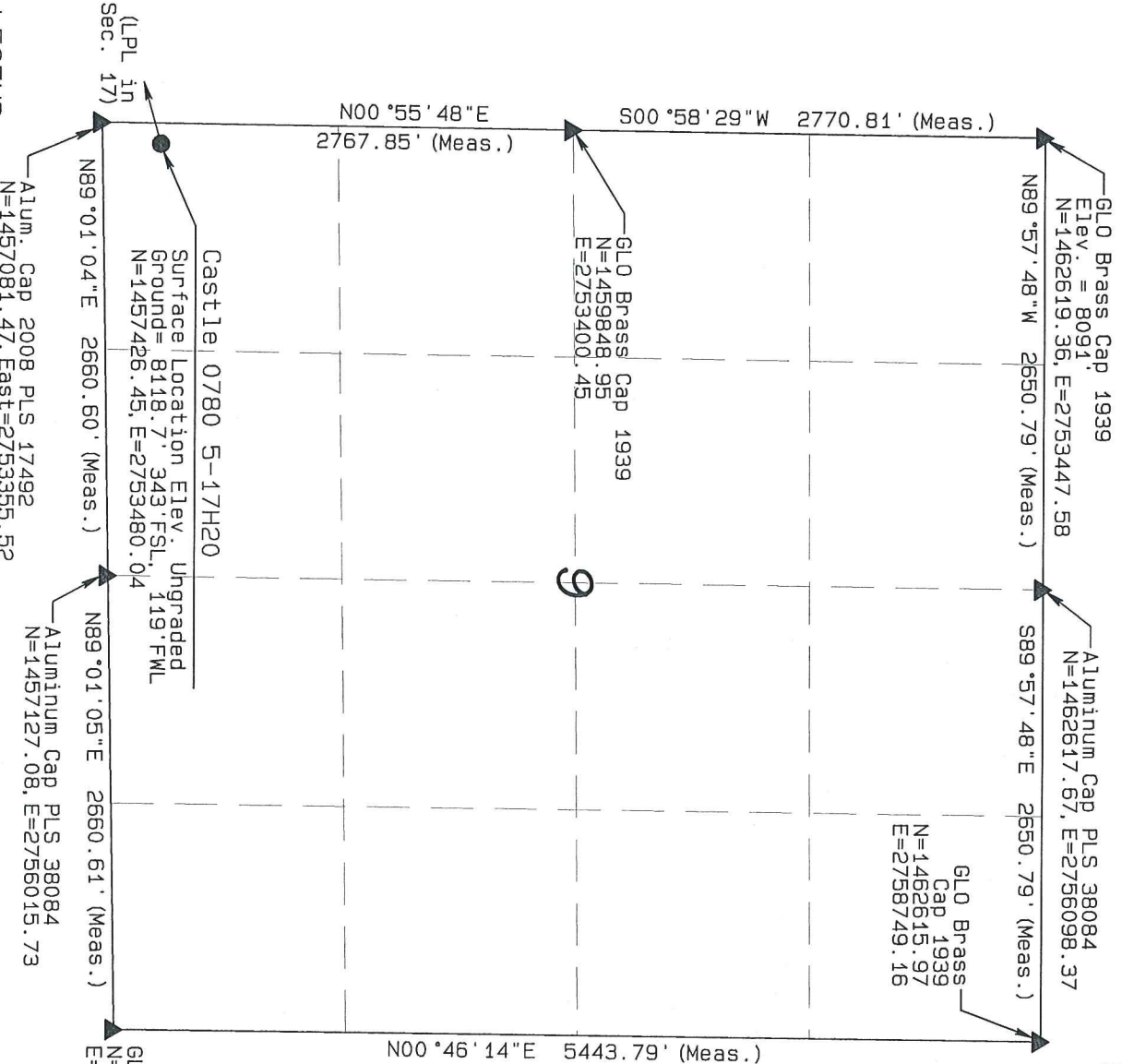
SURVEYED BY: RRM
DRAWN BY: TKH
CHECKED BY: RRM
REVISED: 8/22/16

LEGEND
90° SYMBOL
FOUND CORNER
PROPOSED WELL
PROPOSED BHL/LPL

NAD 83 (TARGET BOTTOM HOLE)
LATITUDE=40.556483°N
LONGITUDE=106.396579°W

NAD 83 (SURFACE LOCATION)
LATITUDE=40.585647°N
LONGITUDE=106.387583°W
PDOP = 1.333

NAD 83 (LANDING POINT LOCATION)
LATITUDE=40.563746°N
LONGITUDE=106.396345°W



T7N, R80W, 6th P.M.

SandRidge Exploration & Production, LLC

Well location, Castle 0780 5-17H20 located as shown in the S1/2SE1/4 of Section 8, T7N, R80W, 6th P.M., Jackson County, Colorado.

BASIS OF BEARINGS:
US STATE PLANE 1983
CO NORTH 0501 GRID

BASIS OF ELEVATION

SPOT ELEVATION AT THE NW CORNER OF SECTION 9, T7N, R80W, 6TH PM, TAKEN FROM THE COALMONT QUADRANGLE, USGS 7.5 MIN QUAD (TOPOGRAPHIC MAP) WITH SAID ELEVATION MARKED AS BEING 8091 FEET.

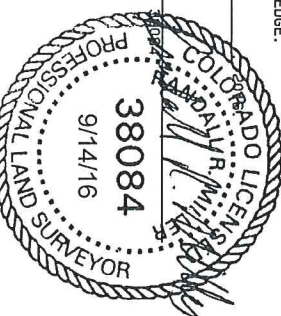
GRAPHIC SCALE 1"=1000'



I, RANDALL R. MILLER, BEING A REGISTERED LAND SURVEYOR IN THE STATE OF COLORADO, DO HEREBY CERTIFY THAT THIS PLAT WAS MADE BY ME AND/OR UNDER MY DIRECT SUPERVISION AND THAT IT IS ACCURATE TO THE BEST OF MY KNOWLEDGE.

DATED THIS _____ DAY OF _____

RANDALL R. MILLER, COLORADO PLS NO. 38084



NORTH PARK ENGINEERING & CONSULTING, INC.

P.O. Box 395
WALDEN, CO 80480
(970) 723-3725

DATE OF FIELD WORK: FEB 19, 2016
DRAWING COMPLETION: MAR 16, 2016
SURVEYED BY: RHM
DRAWN BY: TKH
CHECKED BY: RHM
REVISED: 9/14/16

LEGEND

90° SYMBOL
FOUND CORNER
PROPOSED WELL
PROPOSED BHL/LPL

NAD 83 (SURFACE LOCATION)	
LATITUDE=40.585647°N	PDOP = 1.333
LONGITUDE=106.387583°W	
NAD 83 (TARGET BOTTOM HOLE)	
LATITUDE=40.556483°N	
LONGITUDE=106.396579°W	
NAD 83 (LANDING POINT LOCATION)	
LATITUDE=40.563746°N	
LONGITUDE=106.396345°W	

T7N, R80W, 6th P.M.

SandRidge Exploration & Production, LLC

Landing Point Location, Castle 0780 5-17H20 as shown in the NW1/4NE1/4 of Section 17, T7N, R80W, 6th P.M., Jackson County, Colorado.

BASIS OF BEARINGS:
US STATE PLANE 1983
CO NORTH 0501 GRID

BASIS OF ELEVATION

SPOT ELEVATION AT THE NW CORNER OF SECTION 9, T7N, R80W, 6TH PM, TAKEN FROM THE COALMONT QUADRANGLE, USGS 7.5 MIN QUAD (TOPOGRAPHIC MAP) WITH SAID ELEVATION MARKED AS BEING 8091 FEET.

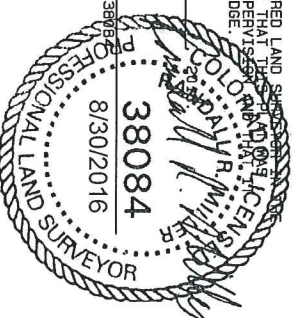
GRAPHIC SCALE 1"=1000'



I, RANDALL R. MILLER, BEING A REGISTERED LAND SURVEYOR IN THE STATE OF COLORADO, DO HEREBY CERTIFY THAT THE SURVEY MADE BY ME AND/OR UNDER MY DIRECT SUPERVISION AND THE PLANS HEREON IS ACCURATE TO THE BEST OF MY KNOWLEDGE.

DATED THIS _____ DAY OF _____

RANDALL R. MILLER, COLORADO PLS NO. 38084



NORTH PARK ENGINEERING & CONSULTING, INC.
P.O. Box 395
WALDEN, CO 80480
(970) 723-3725

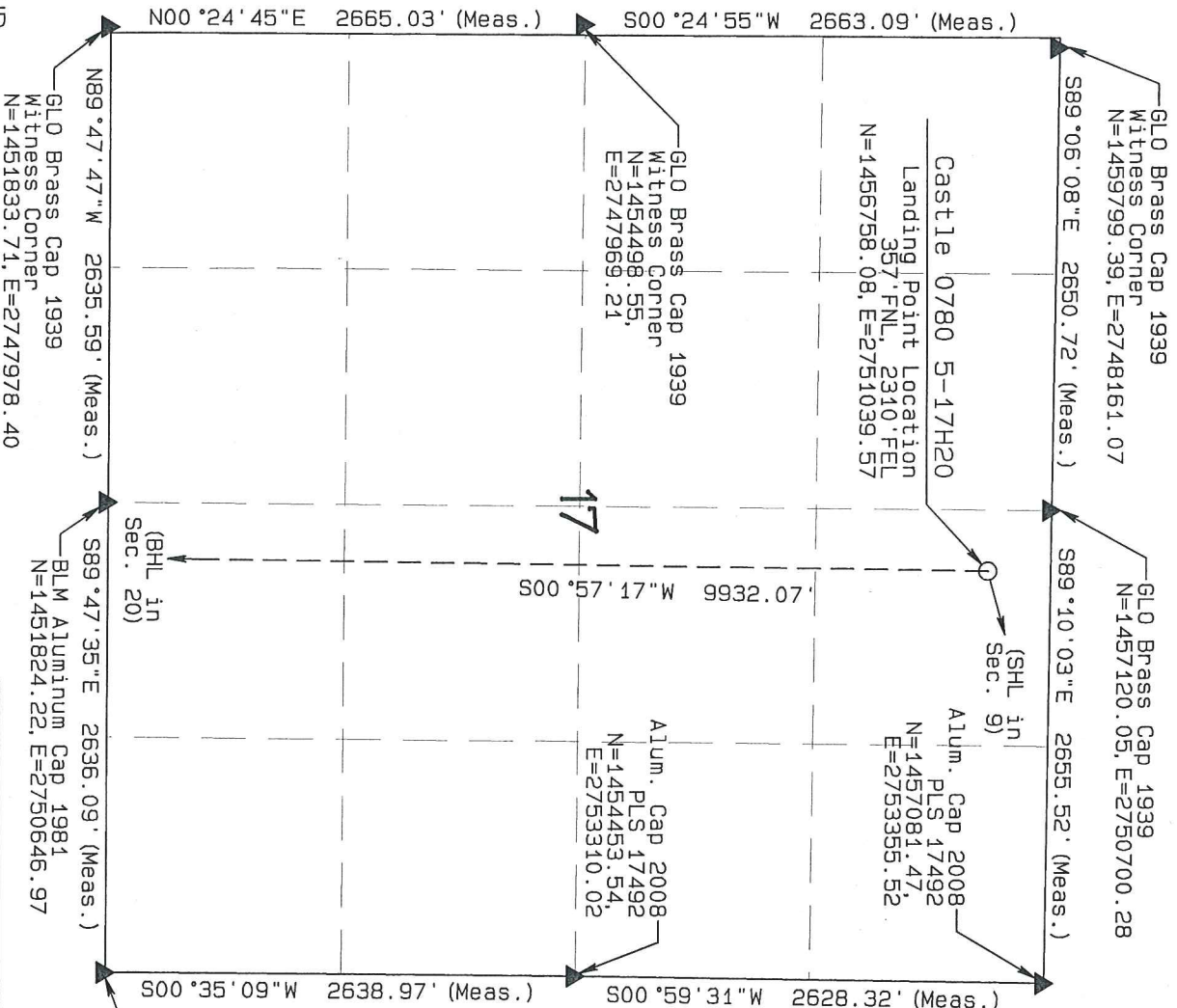
DATE OF FIELD WORK: FEB 19, 2016
DRAWING COMPLETION: MAR 16, 2016

SURVEYED BY: RHM
DRAWN BY: TKH
CHECKED BY: RHM
REVISED: 8/22/16

LEGEND
90° SYMBOL
FOUND CORNER
PROPOSED WELL
PROPOSED BHL/LPL

NAD 83 (TARGET BOTTOM HOLE)	NAD 83 (LANDING POINT LOCATION)
LATITUDE=40.556483°N LONGITUDE=106.396579°W	LATITUDE=40.583746°N LONGITUDE=106.396345°W

NAD 83 (SURFACE LOCATION)	PDOP = 1.333
LATITUDE=40.585647°N LONGITUDE=106.387583°W	



T7N, R80W, 6th P.M.

SandRidge Exploration & Production, LLC

Bottom Hole Location, Castle 0780 5-17H20 as shown in the SW1/4SE1/4 of Section 20, T7N, R80W, 6th P.M., Jackson County, Colorado.

BASIS OF BEARINGS:

US STATE PLANE 1983
CO NORTH 0501 GRID

BASIS OF ELEVATION

SPOT ELEVATION AT THE NW CORNER OF SECTION 9, T7N, R80W, 6TH PM, TAKEN FROM THE COALMONT QUADRANGLE, USGS 7.5 MIN QUAD (TOPOGRAPHIC MAP) WITH SAID ELEVATION MARKED AS BEING 8091 FEET.

GRAPHIC SCALE 1"=1000'

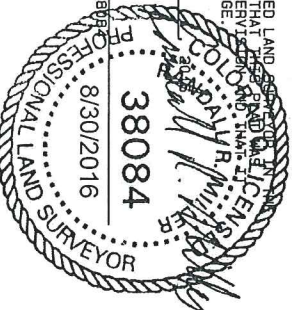
1000 0 1000



I RANDALL R. MILLER, BEING A REGISTERED LAND SURVEYOR IN THE STATE OF COLORADO, DO HEREBY CERTIFY THAT THE ABOVE MAP WAS MADE BY ME AND/OR UNDER MY DIRECT SUPERVISION AND THAT THE SAME IS ACCURATE TO THE BEST OF MY KNOWLEDGE.

DATED THIS _____ DAY OF _____

RANDALL R. MILLER, COLORADO PLS NO. 38084



NORTH PARK ENGINEERING & CONSULTING, INC.

P.O. Box 395
WALDEN, CO 80480
(970) 723-3725

DATE OF FIELD WORK: FEB 19, 2016 DRAWING COMPLETION: MAR 15, 2016

SURVEYED BY: RHM DRAWN BY: TKH CHECKED BY: RHM

REVISED: 8/22/16

LEGEND

- 90° SYMBOL
- FOUND CORNER
- PROPOSED WELL
- PROPOSED BHL/LPL

NAD 83 (TARGET BOTTOM HOLE)	NAD 83 (SURFACE LOCATION)
LATITUDE=40.556483°N	LATITUDE=40.585647°N
LONGITUDE=106.396579°W	LONGITUDE=106.387583°W
	PDOP = 1.333
NAD 83 (LANDING POINT LOCATION)	
LATITUDE=40.563746°N	
LONGITUDE=106.396345°W	

