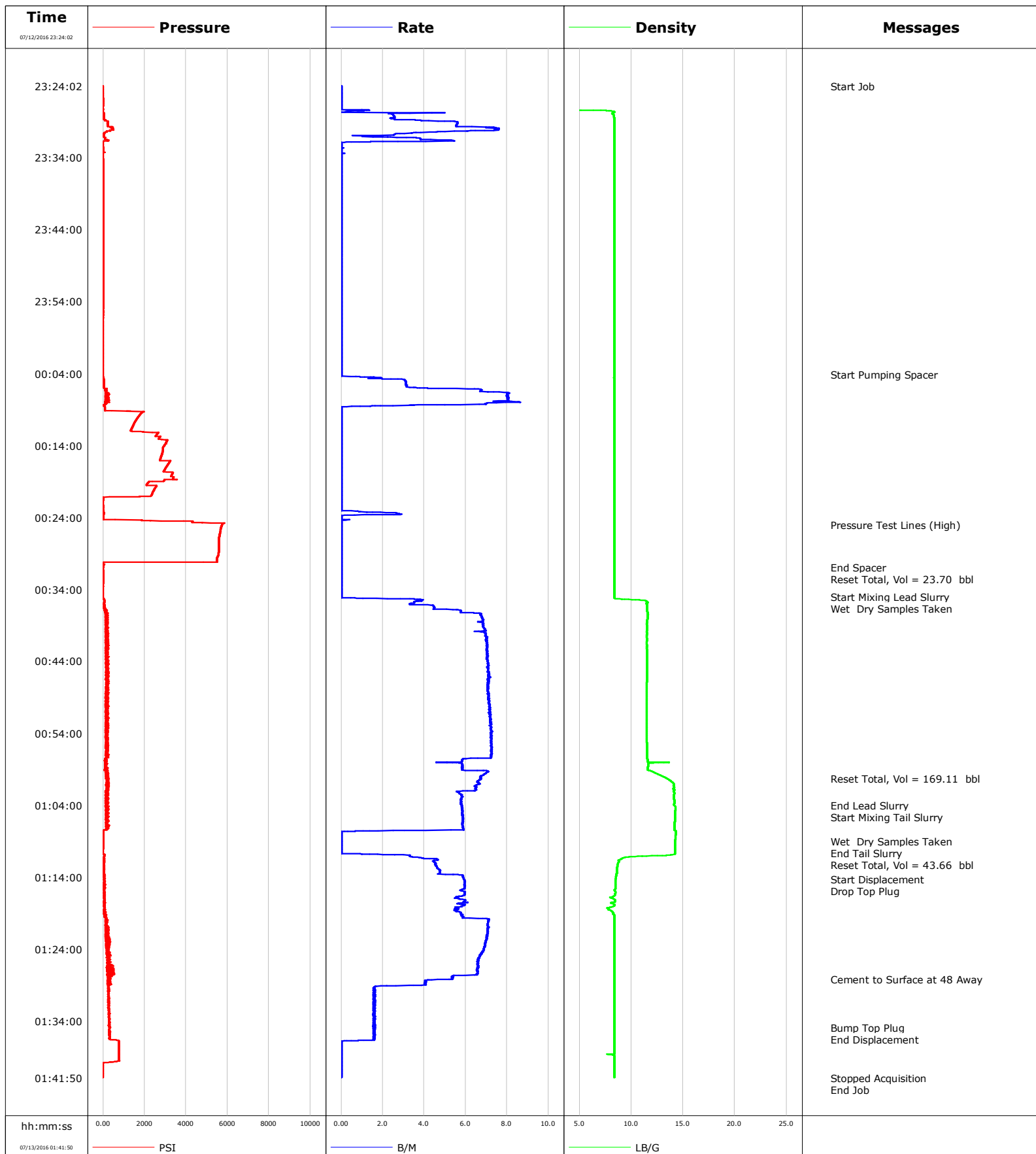


Well	State	Client	Verdad
Field	Wattenberg	SIR No.	D5VO-01328
Engineer	Wayne Silvester/Taylor Barid	Job Type	Surface
Country	United States	Job Date	07-13-2016



Cementing Service Report

				Customer Verdad			Job Number D5VO-01328	
Well State 02-63-16-1H			Location (legal) 217304		Schlumberger Location Cheyenne		Job Start Jul/13/2016	
Field Wattenberg		Formation Name/Type		Deviation deg	Bit Size 13.5 in	Well MD 1597.7 ft		Well TVD 1543.4 ft
County Weld		State/Province Colorado		BHP psi	BHST 100 degF	BHCT 82 degF	Pore Press. Gradient lb/gal	
Well Master 0631681622		API/UWI 05123432030000						
Rig Name X22	Drilled For Oil and Gas		Service Via Land	Casing/Liner				
	Depth, ft	Size, in	Weight, lb/ft	Grade	Thread			
Offshore Zone	Well Class New		Well Type Other	1543.4	9.6	36.0	N/A	N/A
	0.0	0.0	0.0					
Drilling Fluid Type Bentonite		Max. Density 9.00 lb/gal	Plastic Viscosity cP	Tubing/Drill Pipe				
T/D	Depth, ft	Size, in	Weight, lb/ft	Grade	Thread			
Service Line Cementing		Job Type Surface						
Max. Allowed Tub. Press psi		Max. Allowed Ann. Press psi	WH Connection 9 5/8	Perforations/Open Hole				
	Top, ft	Bottom, ft	shot/ft	No. of Shots	Total Interval ft			
	ft	ft						
	ft	ft			Diameter in			
Treat Down Casing		Displacement 115.8 bbl		Packer Type		Packer Depth ft		
Tubing Vol. bbl		Casing Vol. 119.0 bbl		Annular Vol. bbl		Openhole Vol. 134.0 bbl		
Casing/Tubing Secured <input checked="" type="checkbox"/>		1 Hole Vol. Circulated prior to Cement <input checked="" type="checkbox"/>		Casing Tools		Squeeze Job		
Lift Pressure 345 psi				Shoe Type Float		Squeeze Type		
Pipe Rotated <input type="checkbox"/>		Pipe Reciprocated <input type="checkbox"/>		Shoe Depth 1541.6 ft		Tool Type		
No. Centralizers		Top Plugs 1	Bottom Plugs	Stage Tool Type		Tool Depth ft		
Cement Head Type				Stage Tool Depth ft		Tail Pipe Size in		
Job Scheduled For Jul/13/2016		Arrived on Location Jul/13/2016		Leave Location Jul/13/2016		Collar Type Float		Tail Pipe Depth ft
						Collar Depth 1497.7 ft		Sqz. Total Vol. bbl
Date	Time 24-hr clock	Flow Rate B/M	Density LB/G	Volume BBL	CPF1_PRESS PSI	Message		
07/12/2016	23:24:02	0.0	0.01	0.0	-0	Water Test Complete		
07/12/2016	23:26:02	0.0	0.01	0.0	0			
07/12/2016	23:28:02	2.5	8.27	1.0	42			
07/12/2016	23:30:02	7.6	8.39	10.1	500			
07/12/2016	23:32:02	0.0	8.39	17.4	-19			
07/12/2016	23:34:02	0.0	8.39	17.4	-1			
07/12/2016	23:36:02	0.0	8.39	0.0	1			
07/12/2016	23:38:02	0.0	8.39	0.0	1			
07/12/2016	23:40:02	0.0	8.39	0.0	1			
07/12/2016	23:42:02	0.0	8.39	0.0	1			
07/12/2016	23:44:02	0.0	8.39	0.0	1			
07/12/2016	23:46:02	0.0	8.39	0.0	1			
07/12/2016	23:48:02	0.0	8.39	0.0	1			
07/12/2016	23:50:02	0.0	8.39	0.0	1			
07/12/2016	23:52:02	0.0	8.39	0.0	1			
07/12/2016	23:54:02	0.0	8.39	0.0	1			
07/12/2016	23:56:02	0.0	8.39	0.0	0			
07/12/2016	23:58:02	0.0	8.39	0.0	-1			
07/13/2016	00:00:02	0.0	8.39	0.0	-1			
07/13/2016	00:02:02	0.0	8.39	0.0	-1			
07/13/2016	00:04:02	0.0	8.39	0.0	-5			

Well			Field		Job Start		Customer		Job Number	
State 02-63-16-1H			Wattenberg		Jul/13/2016		Verdad		D5VO-01328	
Date	Time 24-hr clock	Flow Rate B/M	Density LB/G	Volume BBL	CPF1_PRESS PSI	Message				
07/13/2016	00:06:02	4.2	8.38	4.5	41					
07/13/2016	00:08:02	7.9	8.39	19.6	88					
07/13/2016	00:10:02	0.0	8.39	22.5	1693					
07/13/2016	00:12:02	0.0	8.39	22.5	1397					
07/13/2016	00:14:02	0.0	8.39	22.5	2952					
07/13/2016	00:16:02	0.0	8.39	22.5	2738					
07/13/2016	00:18:02	0.0	8.39	22.5	3316					
07/13/2016	00:20:02	0.0	8.39	22.5	2483					
07/13/2016	00:22:02	0.0	8.39	22.5	-1					
07/13/2016	00:24:02	0.0	8.39	23.7	3					
07/13/2016	00:25:00	0.0	8.39	23.7	5736	Pressure Test Lines (High)				
07/13/2016	00:26:02	0.0	8.39	23.7	5644					
07/13/2016	00:28:02	0.0	8.39	23.7	5586					
07/13/2016	00:30:02	0.0	8.39	23.7	5495					
07/13/2016	00:30:54	0.0	8.39	23.7	5	End Spacer				
07/13/2016	00:30:55	0.0	8.39	23.7	5	Reset Total, Vol = 23.70 bbl				
07/13/2016	00:32:02	0.0	8.39	23.7	3					
07/13/2016	00:34:02	0.0	8.39	23.7	-8					
07/13/2016	00:35:00	0.0	8.38	23.7	-10	Start Mixing Lead Slurry				
07/13/2016	00:36:02	3.3	11.52	26.4	33					
07/13/2016	00:36:16	4.4	11.54	27.3	81	Wet Dry Samples Taken				
07/13/2016	00:38:02	6.8	11.59	37.6	148					
07/13/2016	00:40:02	6.9	11.51	51.2	221					
07/13/2016	00:42:02	7.1	11.51	65.3	269					
07/13/2016	00:44:02	7.1	11.52	79.3	252					
07/13/2016	00:46:02	7.1	11.51	93.5	164					
07/13/2016	00:48:02	7.1	11.49	107.7	261					
07/13/2016	00:50:02	7.2	11.49	121.9	104					
07/13/2016	00:52:02	7.2	11.50	136.2	152					
07/13/2016	00:54:02	7.2	11.49	150.7	129					
07/13/2016	00:56:02	7.2	11.53	165.1	186					
07/13/2016	00:58:02	4.6	13.69	178.8	179					
07/13/2016	01:00:02	6.7	13.13	191.3	137					
07/13/2016	01:00:14	6.7	13.42	192.7	276	Reset Total, Vol = 169.11 bbl				
07/13/2016	01:02:02	5.7	14.07	204.5	169					
07/13/2016	01:04:00	5.8	14.15	215.8	222	End Lead Slurry				
07/13/2016	01:04:02	5.8	14.16	216.0	119					
07/13/2016	01:04:15	5.8	14.26	217.3	123	Start Mixing Tail Slurry				
07/13/2016	01:06:02	5.9	14.22	227.7	189					
07/13/2016	01:08:02	0.0	14.29	236.5	5					
07/13/2016	01:09:00	0.0	14.23	236.5	2	Wet Dry Samples Taken				
07/13/2016	01:10:02	0.0	14.20	236.5	1					
07/13/2016	01:10:12	0.0	14.20	236.5	-4	End Tail Slurry				
07/13/2016	01:10:13	0.0	14.20	236.5	-4	Reset Total, Vol = 43.66 bbl				
07/13/2016	01:12:02	4.5	8.72	241.3	45					
07/13/2016	01:14:02	5.9	8.52	251.1	41					
07/13/2016	01:14:12	5.9	8.50	252.1	44	Start Displacement				
07/13/2016	01:14:15	5.9	8.49	252.4	97	Drop Top Plug				
07/13/2016	01:16:02	6.0	8.45	263.0	59					
07/13/2016	01:18:02	5.8	8.31	274.7	29					
07/13/2016	01:20:02	7.1	8.39	286.6	113					
07/13/2016	01:22:02	7.0	8.39	300.7	282					
07/13/2016	01:24:02	6.9	8.39	314.6	185					
07/13/2016	01:26:02	6.6	8.39	328.0	321					

Well			Field		Job Start	Customer	Job Number
State 02-63-16-1H			Wattenberg		Jul/13/2016	Verdad	D5VO-01328
Date	Time 24-hr clock	Flow Rate B/M	Density LB/G	Volume BBL	CPF1_PRESS PSI	Message	
07/13/2016	01:28:10	5.4	8.39	341.4	320	Cement to Surface at 48 Away	
07/13/2016	01:30:02	1.5	8.39	346.7	242		
07/13/2016	01:32:02	1.6	8.39	349.8	303		
07/13/2016	01:34:02	1.6	8.39	353.0	289		
07/13/2016	01:34:50	1.6	8.39	354.3	317	Bump Top Plug	
07/13/2016	01:34:52	1.6	8.39	354.3	342	End Displacement	
07/13/2016	01:36:02	1.6	8.39	356.2	332		
07/13/2016	01:38:02	0.0	8.39	357.2	764		
07/13/2016	01:40:02	0.0	8.39	357.2	-7		

Post Job Summary

Average Pump Rates, bbl/min					Volume of Fluid Injected, bbl			
Slurry 7.0	N2	Mud	Maximum Rate 8.0	Total Slurry 212.0	Mud 0.0	Spacer 21.6	N2	
Treating Pressure Summary, psi					Breakdown Fluid			
Maximum 5689	Final 7	Average 123	Bump Plug to 750	Breakdown	Type	Volume bbl	Density lb/gal	
Avg. N2 Percent %		Designed Slurry Volume 199.0 bbl		Displacement 115.6 bbl	Mix Water Temp 70 degF	Cement Circulated to Surface? <input checked="" type="checkbox"/>	Volume 65.0 bbl	
						Washed Thru Perfs <input type="checkbox"/>	To ft	
Customer or Authorized Representative Jermey Wilde			Schlumberger Supervisor Wayne Silvester/Taylor Barid			Circulation Lost <input type="checkbox"/>	Job Completed <input checked="" type="checkbox"/>	
						-	-	