

GEARHART

FILING NO.

COMPANY LYCO

WELL MASO

FIELD KERS

COUNTY WELD

LOCATION

SEC 18 TWP

Permanent Datum GROUND LEVEL

Log Measured from KELLY BUSHING 11

Drilling Measured from KELLY BUSHING

Date 5/5/86

Run No. ONE

Depth--Driller

Depth Logger 6949

Btm. Log Interval 6942

Top Log Interval 5701

Open Hole Size

CASING REC. Size 8 5/8" Wt./Ft. Gra

Surface String 8 5/8"

Prot. String

Prod. String 5.5"

Liner

PRIMARY

STRING Surface Pri

Vol. of Cement

Type of Cement

Additive

Additive by %

Retarder

Retarder by %

Wt. of Slurry

Water Loss

Drill. Mud Type

Drilling Mud Wt.

CEMENT BOND LOG GAMMA RAY CCL

ENERGY COMPANY

N #1

KEY

STATE COLORADO

Other Services
PERFORATE

SN RGE 64W

Elev. 4623

Ft. Above Permanent Datum

Elev. K.B. 4634
D.F. 4633
G.L. 4623

Type Fluid in Hole FRESH WATER

Dens. Visc.

Max. Rec. Temp.

Est. Cement Top 5918

Equip. Location 6058 IFT MORGAN

Recorded By D. OLSON

Witnessed By D. HAMMOND

Type Joint Top Bottom 313

SURF T.D.

CEMENTING DATA

Location Production

Liner

FOOT HERE

PRIMARY CEMENTING PROCEDURE			BOND EQUIPMENT DATA		
	Hour	Date	Tool No. 536	Tool Type COMBO	Tool Size 3.25"
Started Pumping Cement			Centralizer:	Type BOWSPRING	Size 5.6'
Plug on Bottom				No. 2	Position TOP & BOTTOM
Release Pressure			Transmitter to Receiver Spacing		
Finish Cementing Operation			Amplitude	Seismic Spectrum	Travel Time
Start Cement Bond Log			3'	5'	5'
Finish Cement Bond Log					

GAMMA RAY EQUIPMENT & LOGGING DATA									
Tool No.	536	Depths		Speed FPM	T. C. Sec.	Bkg. Cps.	Cal. Cps.	Sens.	Zero Div. L or R
Tool Model No.		From	To						
Diameter				60	AUTO	170		280	0
Detector Model No.									20
Type	SCINT.								
Length	4"								
Distance to N Source									

REMARKS:

NOTICE: Gearhart Industries, Inc. cannot and does not guarantee the accuracy or correctness of any log data or of any interpretation thereof and shall not be liable or responsible for any loss, cost, damage or expense incurred or sustained by Customer resulting from any log data or interpretation made by Gearhart Industries, Inc. or any of its agents, servants or employees. Neither log data nor interpretation thereof should be relied upon as the sole basis for any drilling, completion, well treatment or production decision or any other procedure. Unless there is presently in effect a master or other specific or general contract intended to extend and apply hereto, this Log is provided in accordance with Gearhart Industries, Inc.'s General Terms and Conditions as set out in its current price schedule.

GEARHART INDUSTRIES, INC.

11-20-2017 14:00:00

GAMMA-RAY	DEPTH	AMPLITUDE	SEISMIC SPECTRUM
GAMMA RAY API UNITS		AMPLITUDE MILLIVOLTS	SEISMIC SPECTRUM RECORDING
		TRAVEL TIME MICRO SECONDS / FT.	MICRO SECONDS
COLLAR LOG			SIGNATURE CURVE RECORDING
			MICRO SECONDS

TOOL CALIBRATION 4.342 VOLTS

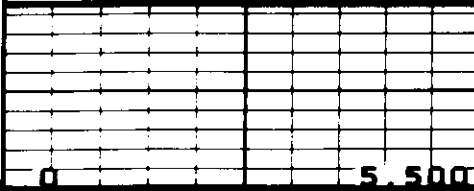

CASE WINDOW 265 TO 295 HSEC

CASING O.D.

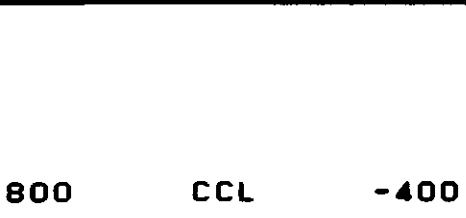
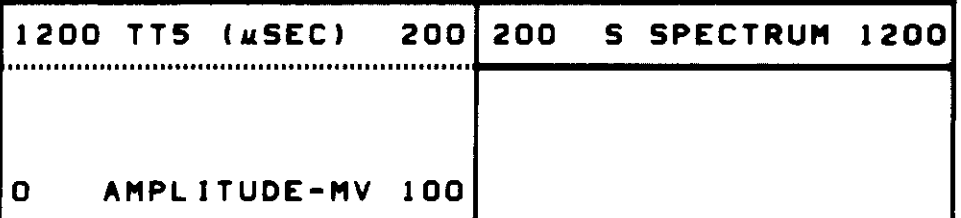
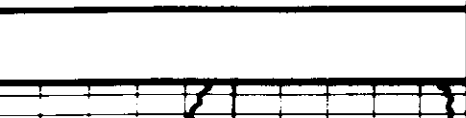

CEMENT STRENGTH

5.500 IN

2 PSI

GATE WINDOW		265 TO 305 μ SEC	CEMENT STRENGTH		0 PSI
TOTAL BOND		0.0 DB/FT	CASING THICKNESS		0.300 IN
PLAYBACK OFFSET		14.0 FT	BMAX		2.0 MV
05-05-86		16:27	5700.0	0	0072-34 1 2
			200	S SPECTRUM 1200	
					
			200	S SPECTRUM 1200	
05-05-86		16:27	5700.0	0	0072-34 1 2

CEMENT BOND			FREE PIPE CALIBRATION		
TOOL TYPE: CBT-GA			SERIAL NO: 00536		
AMPLITUDE			4.342	VOLTS	
BIAS			0.014	VOLTS	
GATE WINDOW			265 TO 305	μ SEC	
K FACTOR			7.753		

TOOL CALIBRATION		5.130 VOLTS	CASING O.D.		5.500 IN
GATE WINDOW		265 TO 305 μ SEC	CEMENT STRENGTH		0 PSI
TOTAL BOND		11.0 DB/FT	CASING THICKNESS		0.300 IN
PLAYBACK OFFSET		14.0 FT	BMAX		2.0 MV
05-05-86		16:26	5701.0	0	0072-34 1 2
			1200 TT5 (μ SEC)	200	200 S SPECTRUM 1200
					
800 CCL -400			0 AMPLITUDE-MV 100		
0 GR API 200					
					

COLLARS

GAMMA RAY

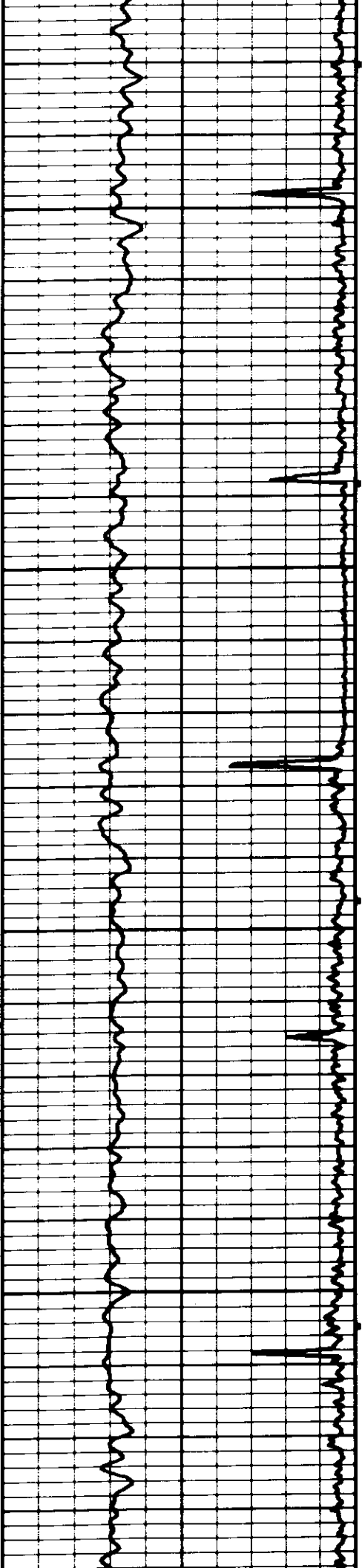
AMPLITUDE

TRAVEL TIME

05800

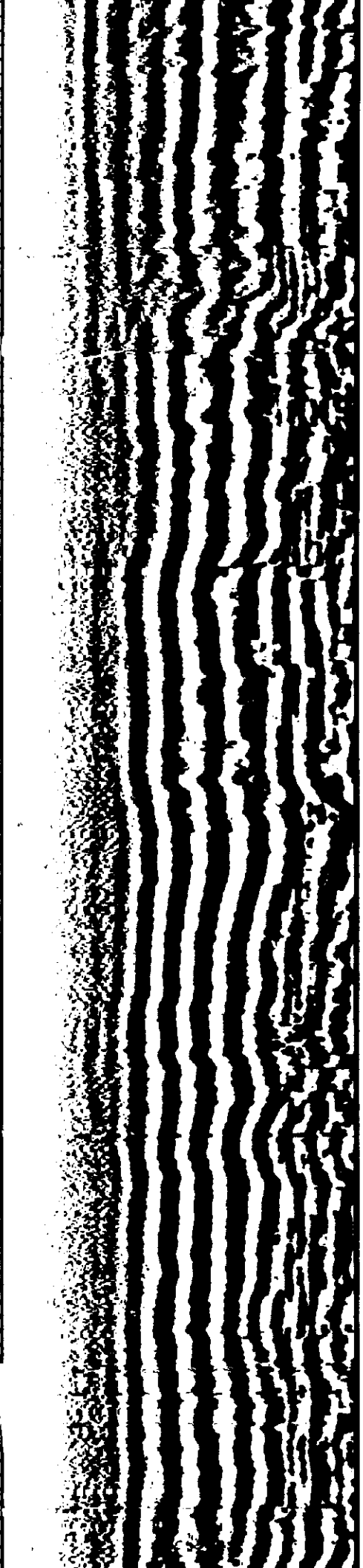
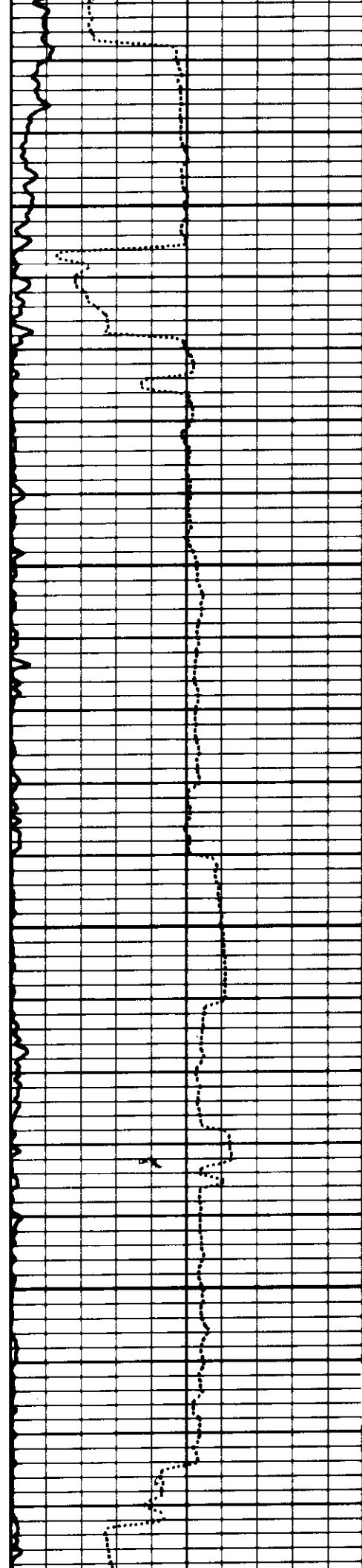
05900

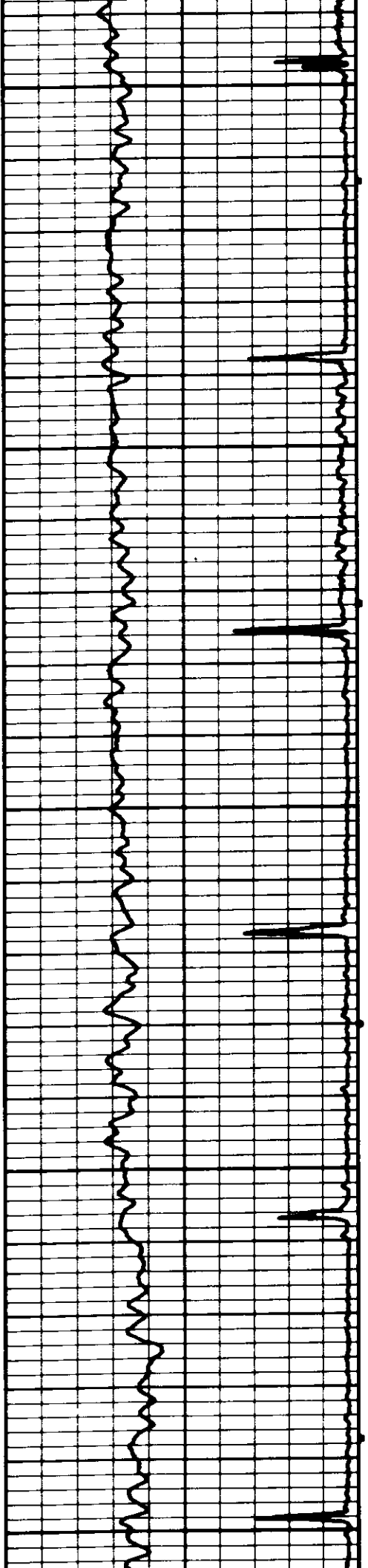
INDICATED STOP OF CEMENT



06000

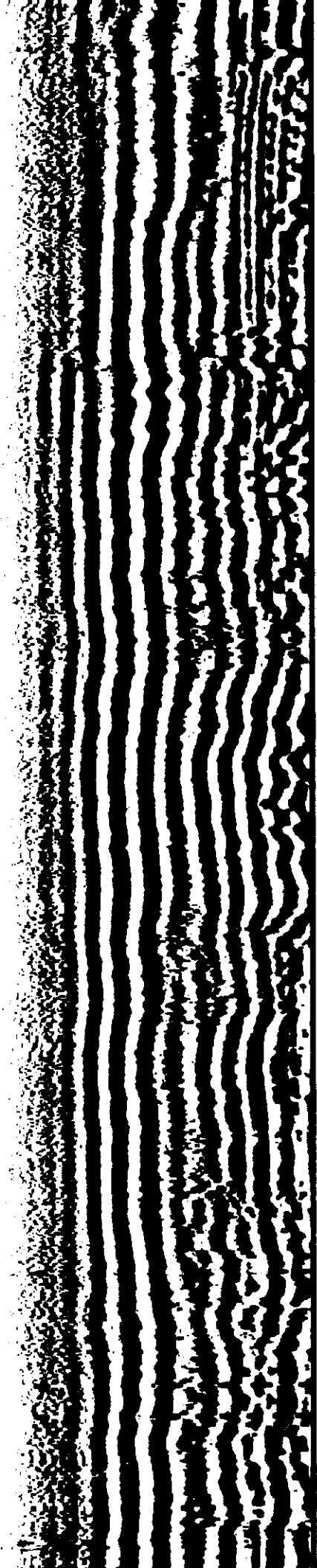
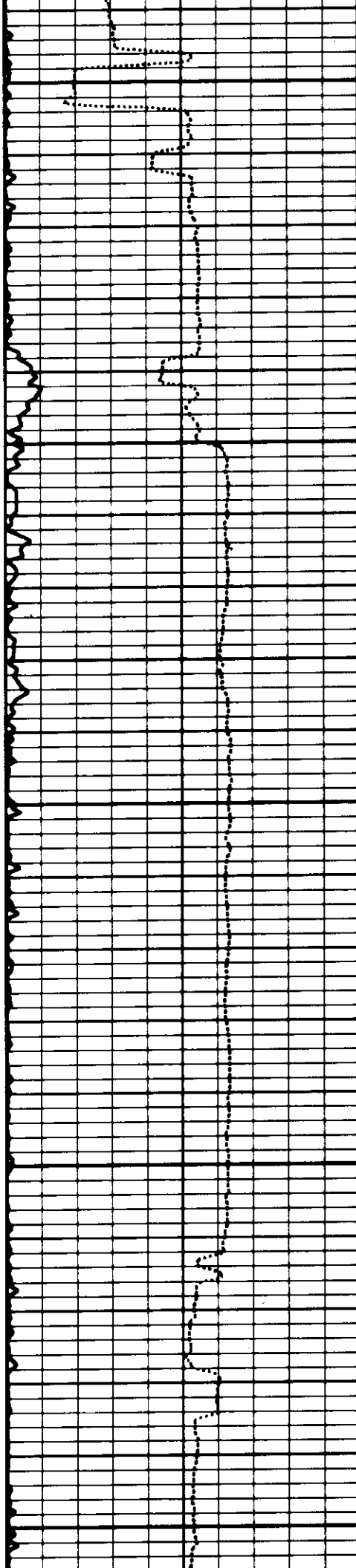
06100

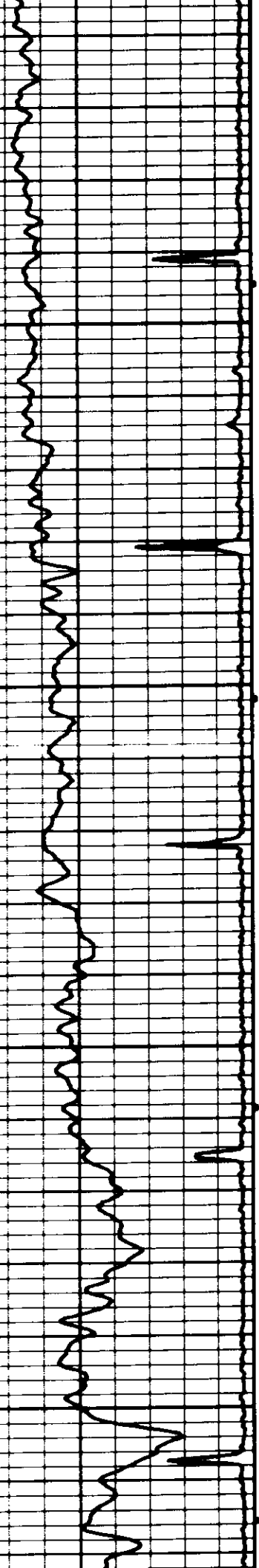




06200

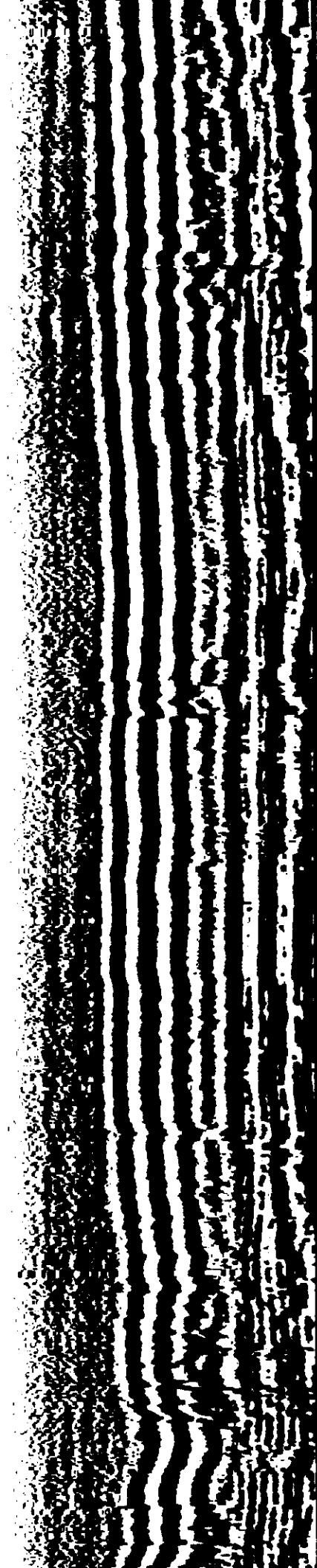
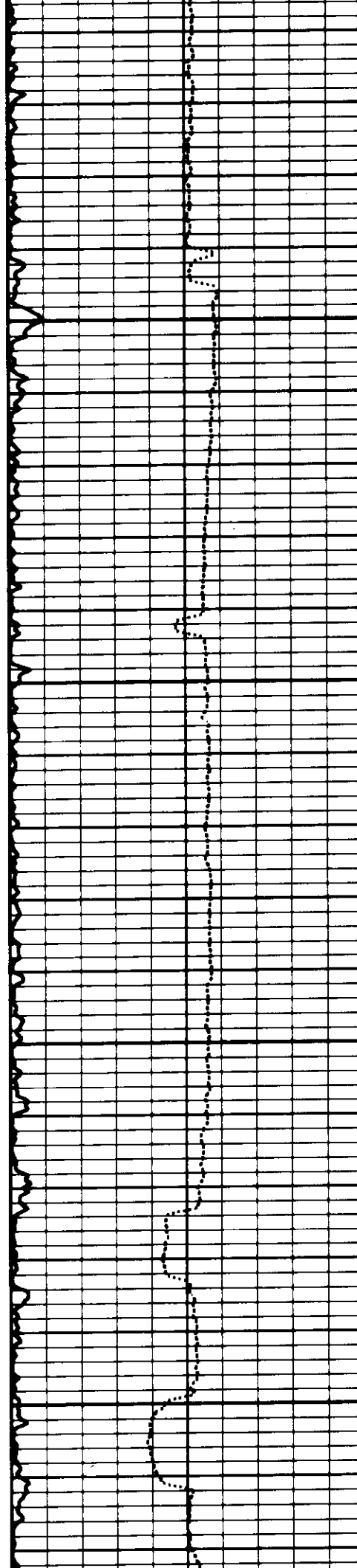
06300

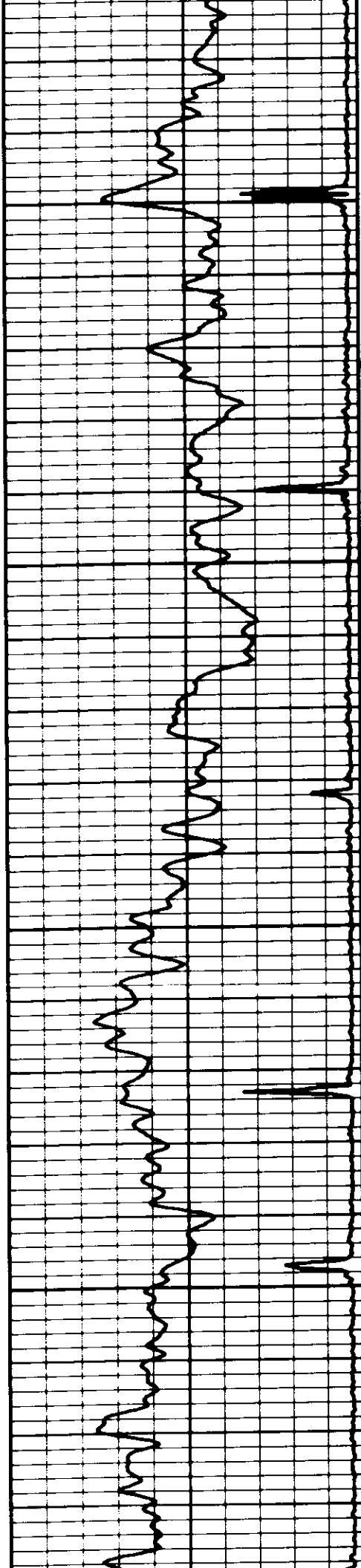




06400

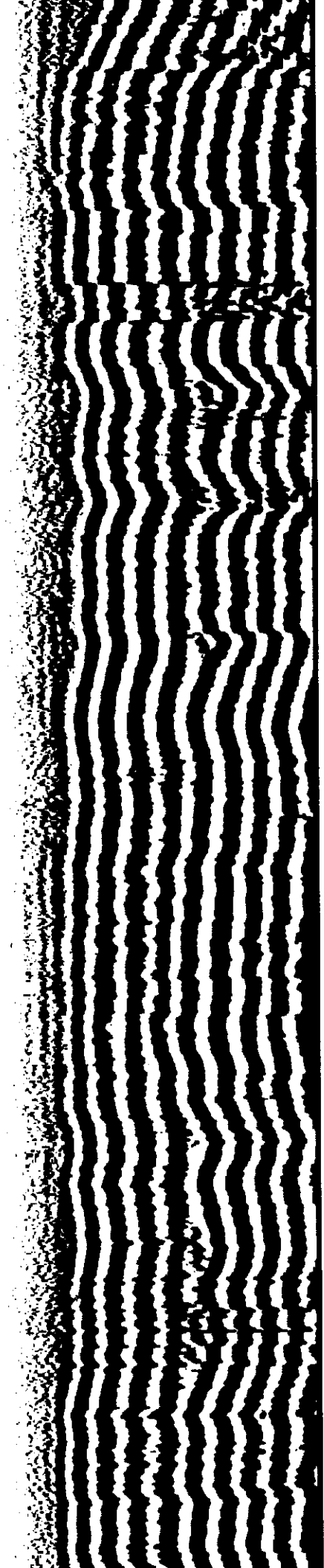
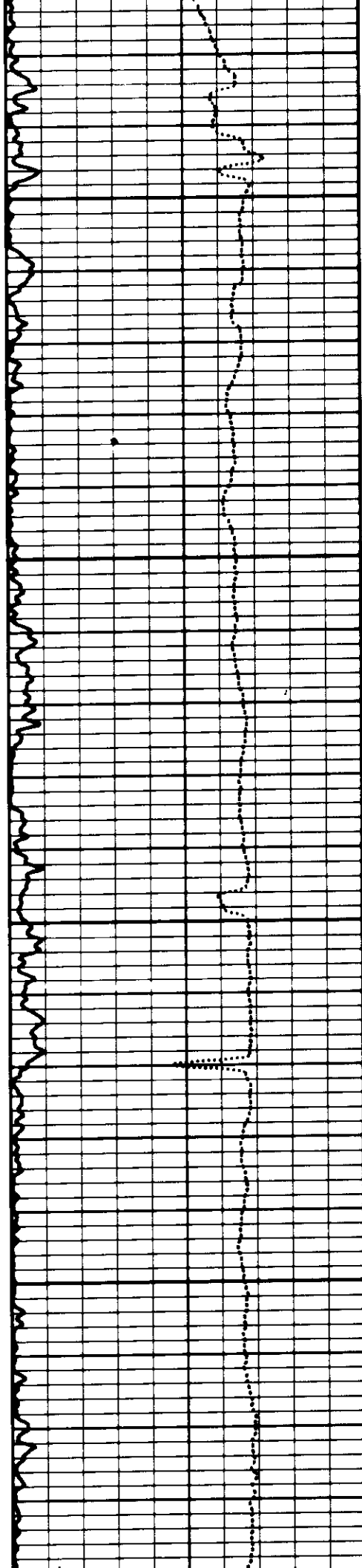
06500

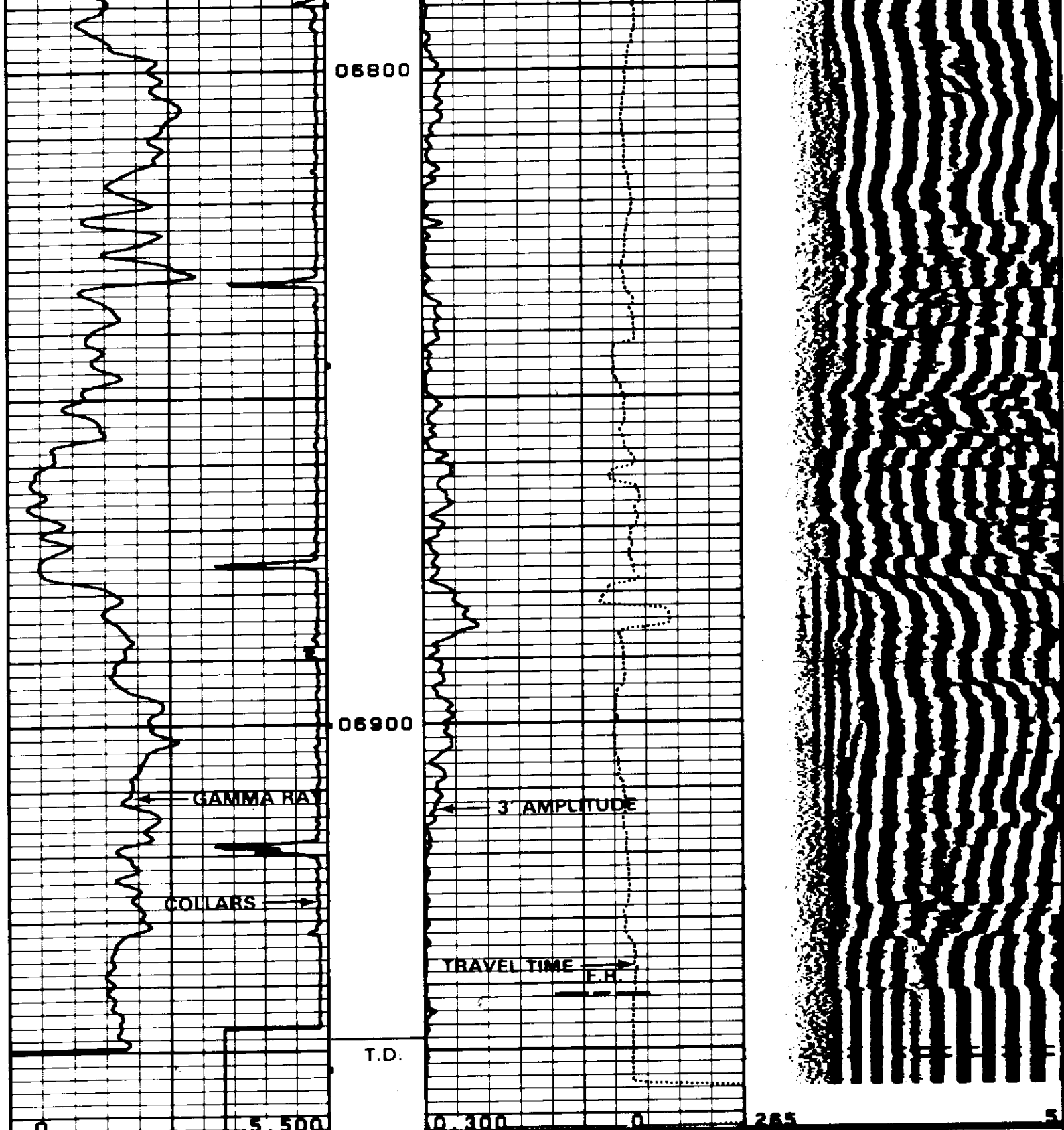




06600

06700





800 CCL -400

0 GR API 200

1200 TT5 (μ SEC) 200

200 S SPECTRUM 1200

0 AMPLITUDE-MV 100

TOOL CALIBRATION 5.130 VOLTS
GATE WINDOW 265 TO 305 μ SEC
TOTAL BOND 11.0 DB/FT
PLAYBACK OFFSET 14.0 FT

CASING O.D. 5.500 IN
CEMENT STRENGTH 0 PSI
CASING THICKNESS 0.300 IN
BMAX 2.0 MV

05-05-86

16:02

6711.5

0

0072-34

1

1

REPEAT SECTION

1200 TT5 (μ SEC) 200

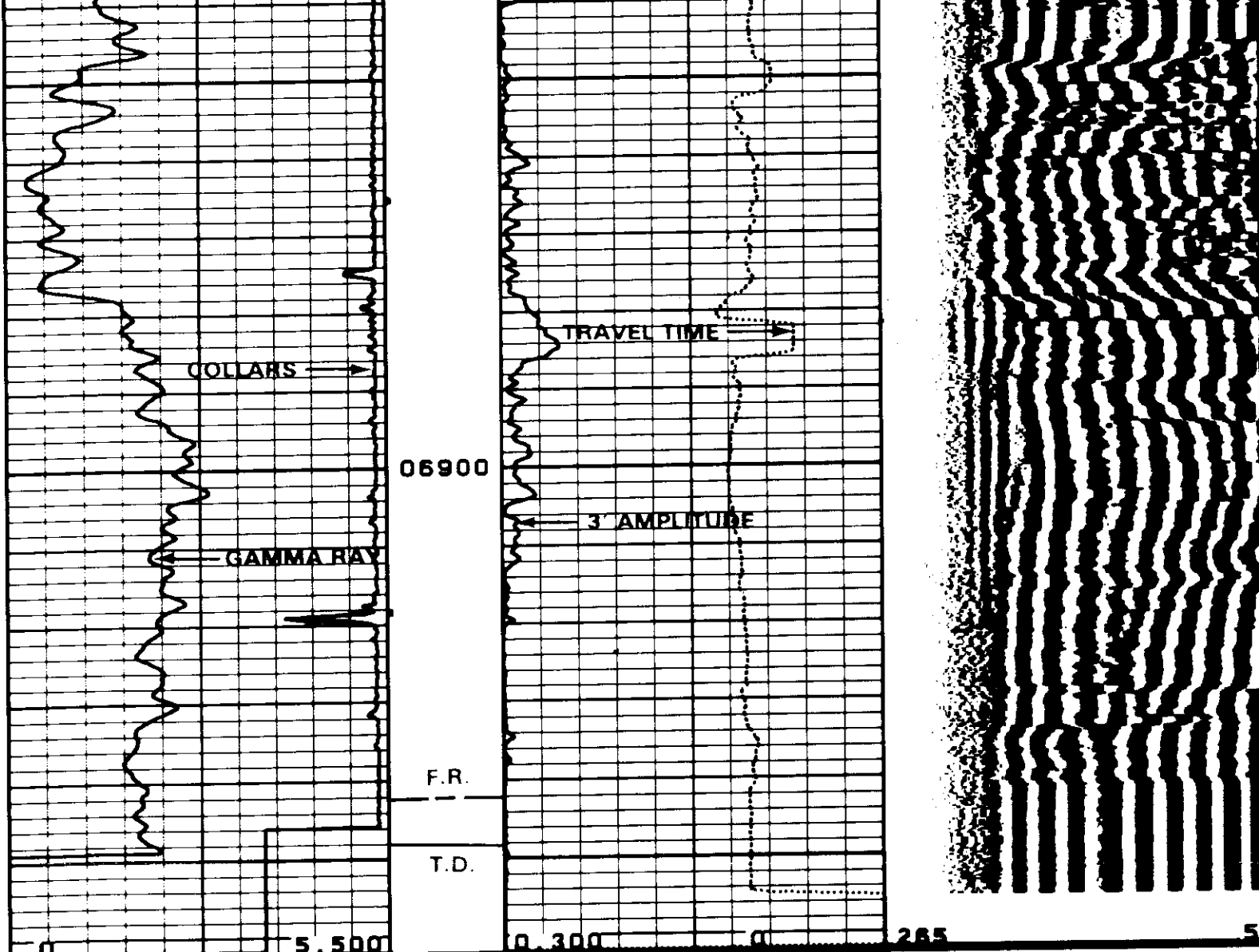
200 S SPECTRUM 1200

800 CCL -400

0 AMPLITUDE-MV 100

0 GR API 200

06800



REPEAT SECTION			1200 TT5 (μSEC) 200	200 S SPECTRUM 1200
800	CCL	-400	0	AMPLITUDE-MV 100
0	GR API	200		
05-05-86 15:58 6962.0 0 0072-34 1 1				

