

FINAL PRINT
Schlumberger

CEN

COMPANY: LYCD ENERGY CORP

WELL: NO. 1 HETTINGER

FIELD: KERSEY
COUNTY: WELD
STATE: COLORADO

LOCATION: 1980 FSL, 660 F
NE SE
SEC: 18 TWP

PERMANENT DATUM: GL
ELEV. OF PERM. DATUM: 4622.
LOG MEASURED FROM: KB
12.0 F ABOVE PERM.
DRLG. MEASURED FROM: KB

DATE: 28 JAN
RUN NO: 1

DEPTH-DRILLER: 6969.0
DEPTH-LOGGER: 6876.0
BTM. LOG INTERVAL: 6867.0
TOP LOG INTERVAL: 6693.0

CASING-DRILLER: 308 F
CASING-LOGGER:
CASING: 8 5/8

BIT SIZE: 12 1/4

CSU

PPORATION

CEL

SN

RGE: 64M

0 F

DATUM

ELEVATIONS-
KB: 4634.0 F
DF:
GL: 4622.0 F

86

F
F
F
F

5 1/2

7 7/8

OTHER SERVICES-
PERF

PROGRAM
TAPE NO:
26.2
SERVICE
ORDER NO:
267848

MAX. REC. TEMP:

LOGGING UNIT NO: 8331
LOGGING UNIT LOC: FORT MORGAN
RECORDED BY: BRIAN STAMBAUGH
WITNESSED BY: DOUG HAMMOND

REMARKS:

TIED INTO CNL-FDC-GR LOG OF 1/24/86
SLIM HOLE SONIC TOOL USED DUE TO 3 1/2" HOLE RESTRICTION
PROBABLE CEMENT TOP AT 5385
BOND LOG RUN WITHOUT PRESSURE AT SURFACE

EQUIPMENT NUMBERS-

SMM-AA 131 CPU-CBC 2333 SLS-JD 182 SHH-CB 379
SHH-AFA 3 CCL-AJ 182

ALL INTERPRETATIONS ARE OPINIONS BASED ON INFERENCES FROM ELECTRICAL OR OTHER MEASUREMENTS AND WE CANNOT, AND DO NOT GUARANTEE THE ACCURACY OR CORRECTNESS OF ANY INTERPRETATIONS, AND WE SHALL NOT, EXCEPT IN THE CASE OF GROSS OR WILLFUL NEGLIGENCE ON OUR PART, BE LIABLE OR RESPONSIBLE FOR ANY LOSS, COSTS, DAMAGES OR EXPENSES INCURRED OR SUSTAINED BY ANYONE RESULTING FROM ANY INTERPRETATION MADE BY ANY OF OUR OFFICERS, AGENTS OR EMPLOYEES. THESE INTERPRETATIONS ARE ALSO SUBJECT TO OUR GENERAL TERMS AND CONDITIONS AS SET OUT IN OUR CURRENT PRICE SCHEDULE.

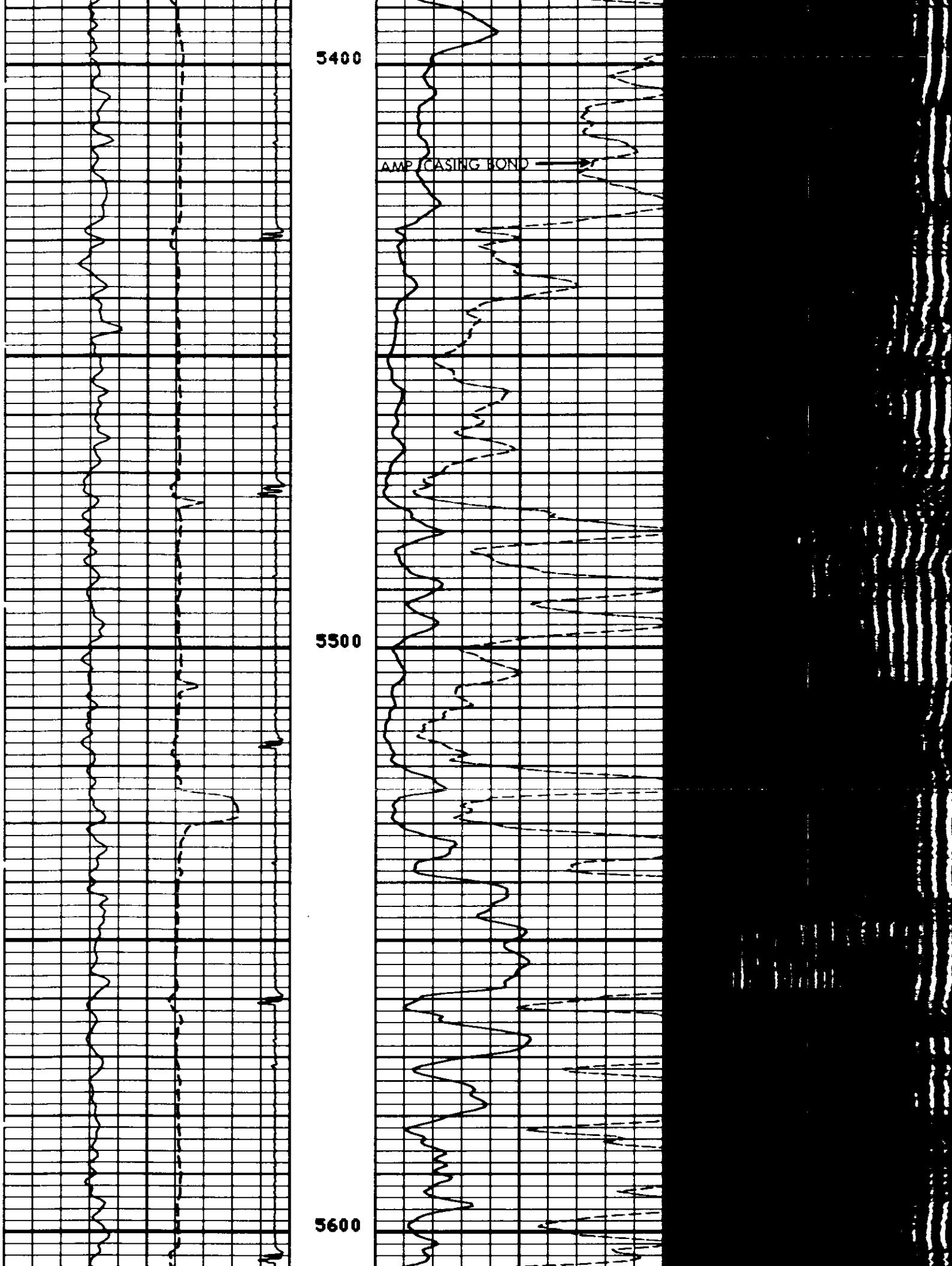
TT2 (US)				
400.00	200.00			
GR (GAPI)				
0.0	150.00			
CCL				
-19.00	1.0000		SA2 (MV)	
		0.0	20.000	
			SA2 (MV)	
		0.0	100.00	

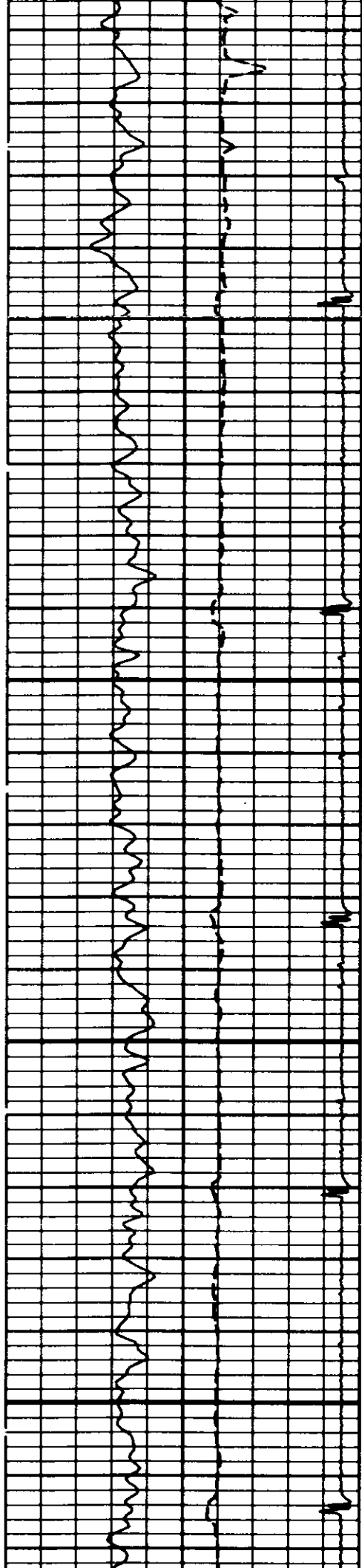
5400

AMP / CASING BOND

5500

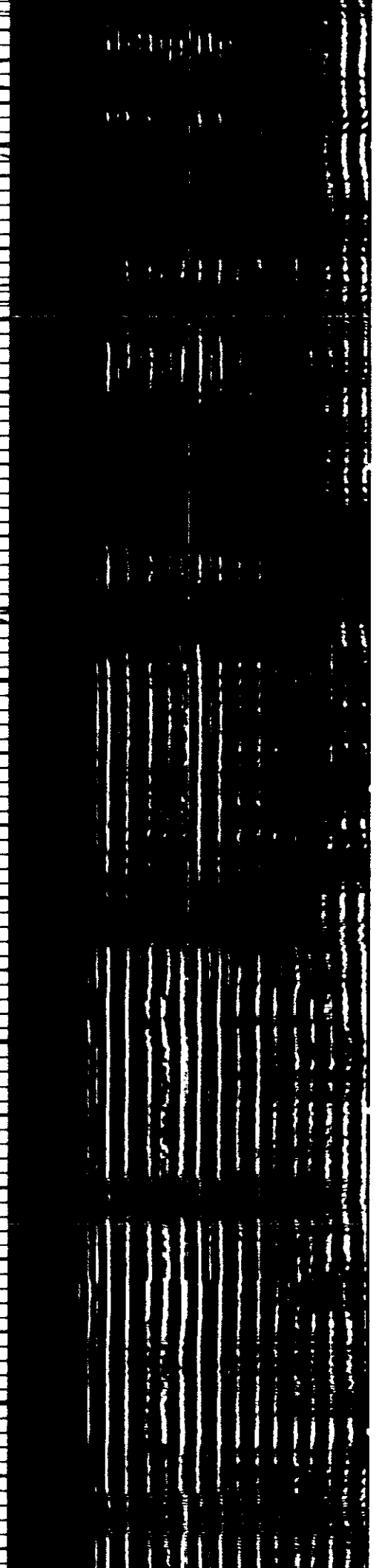
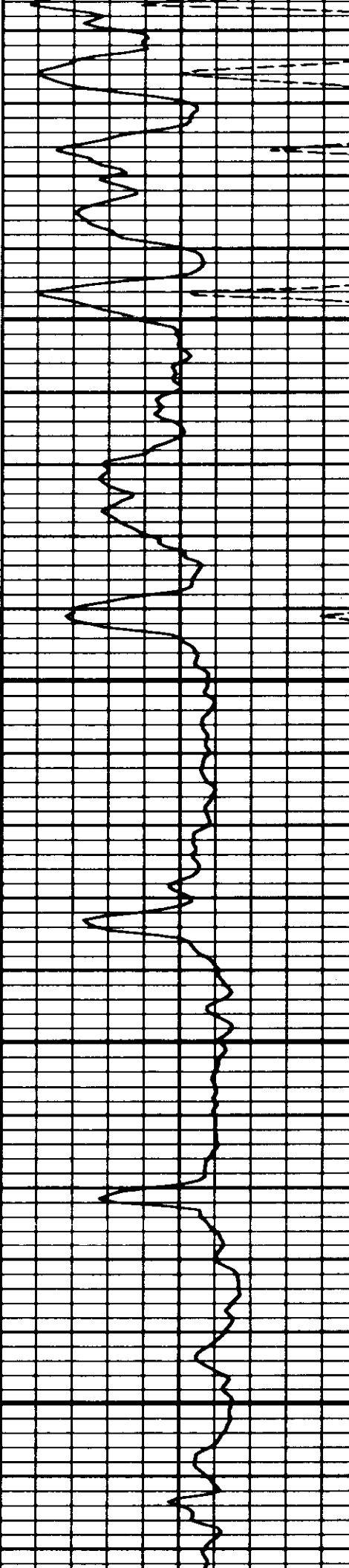
5600

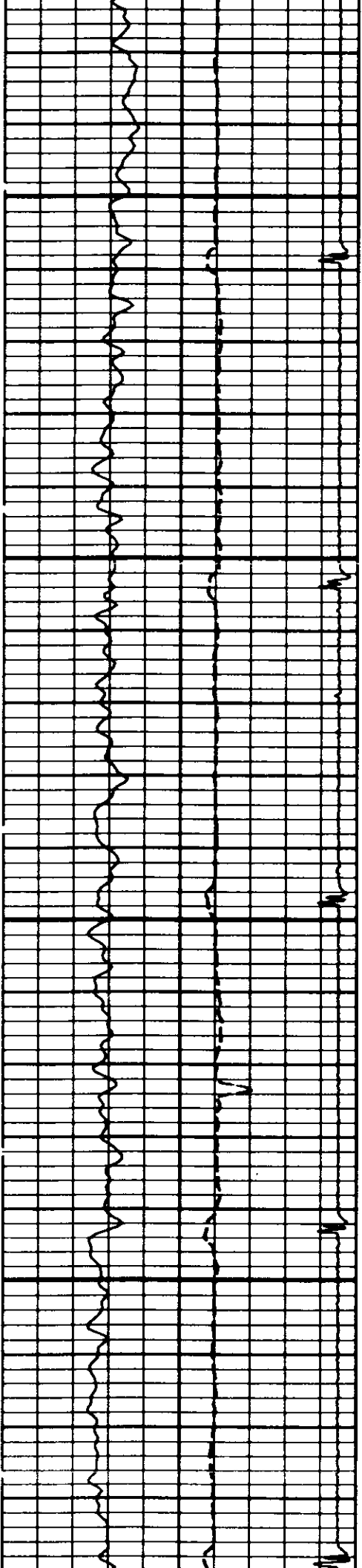




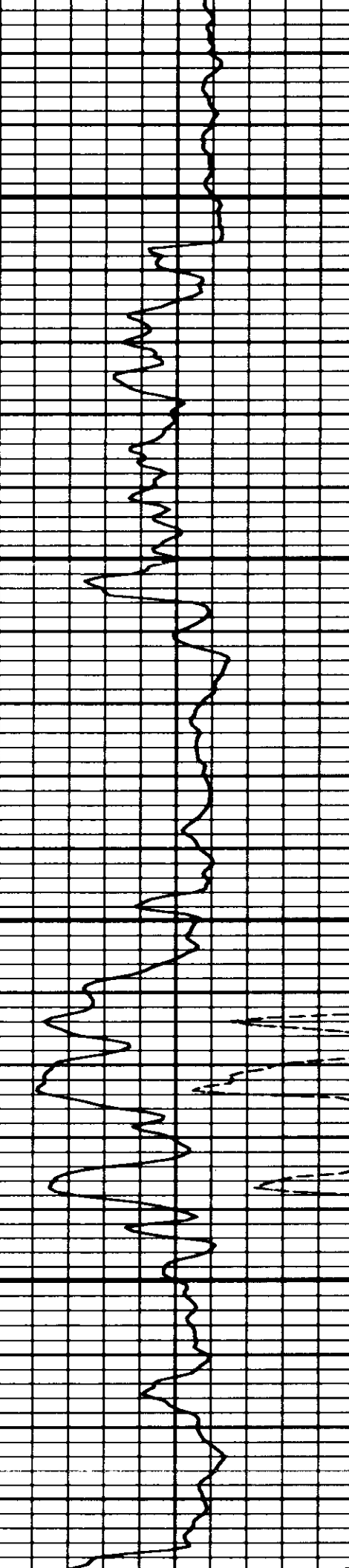
5700

5800

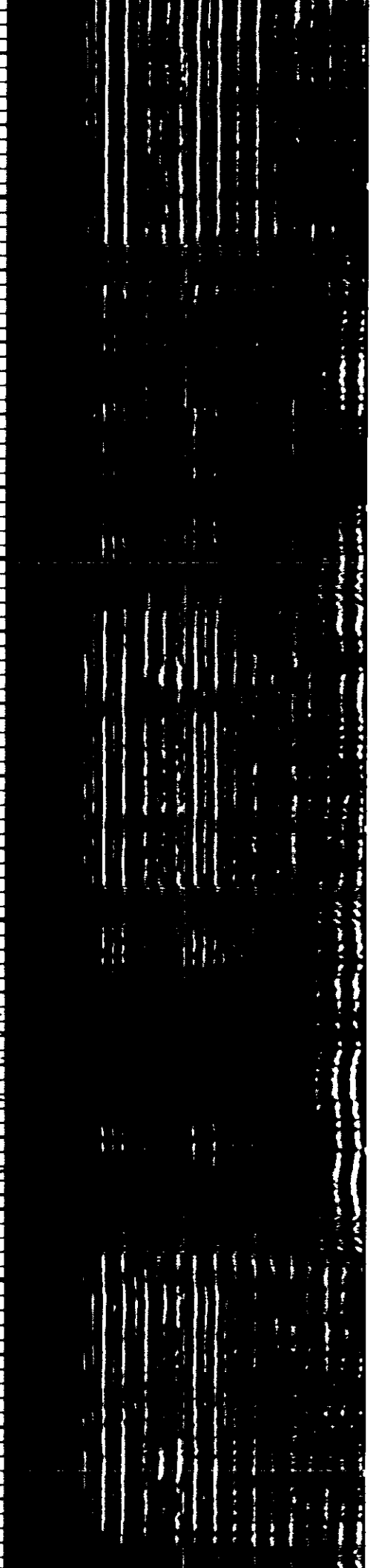


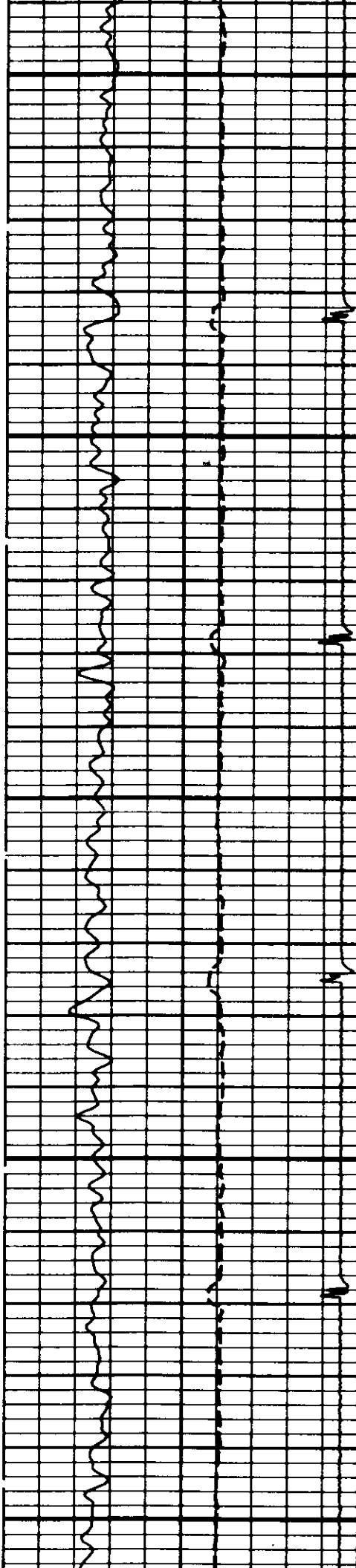


5900

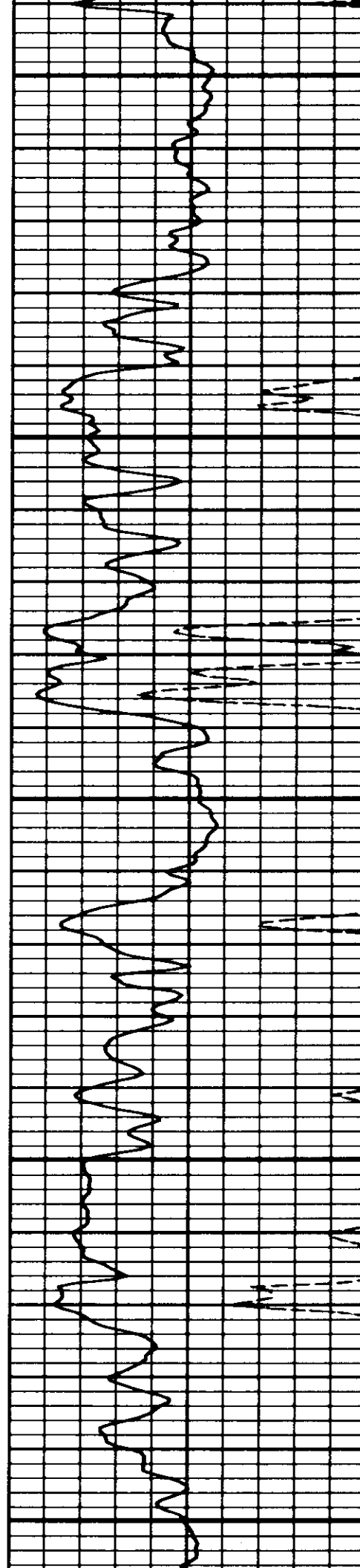


6000



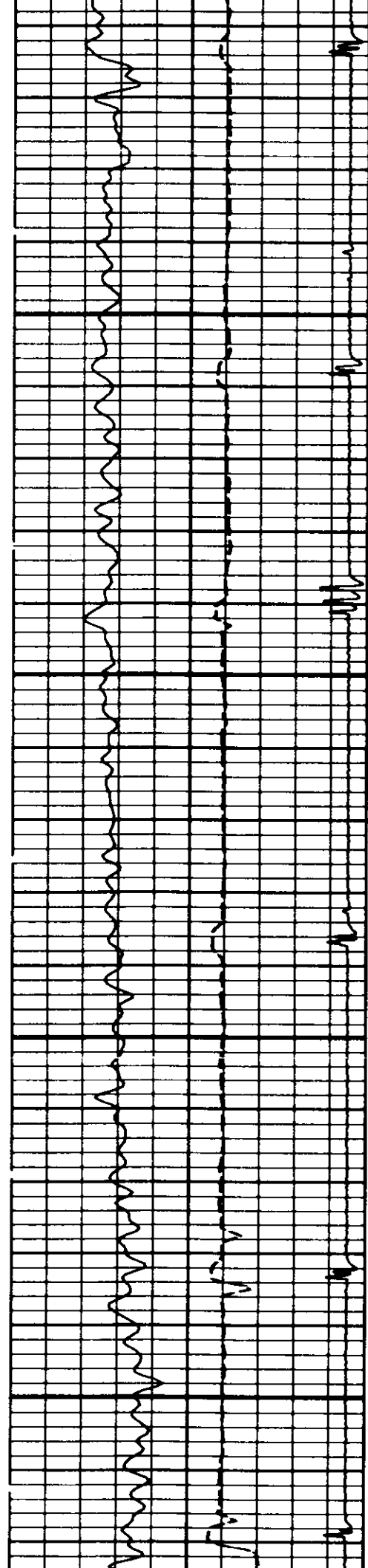


6100

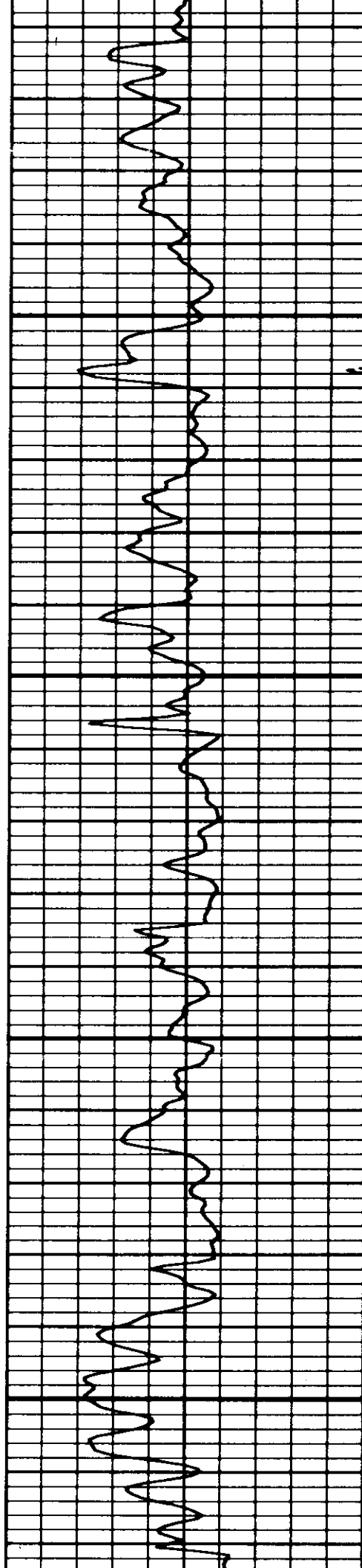


6200

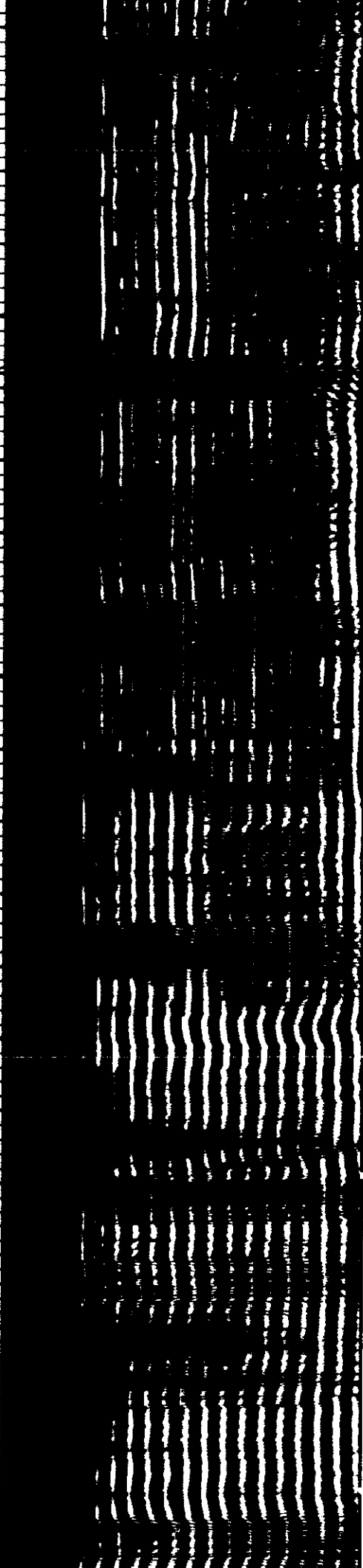


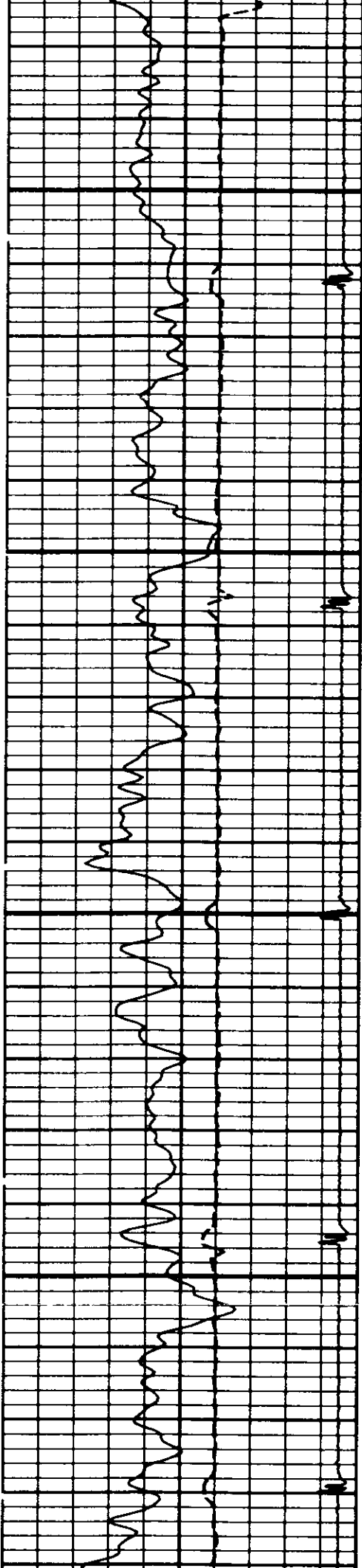


6300

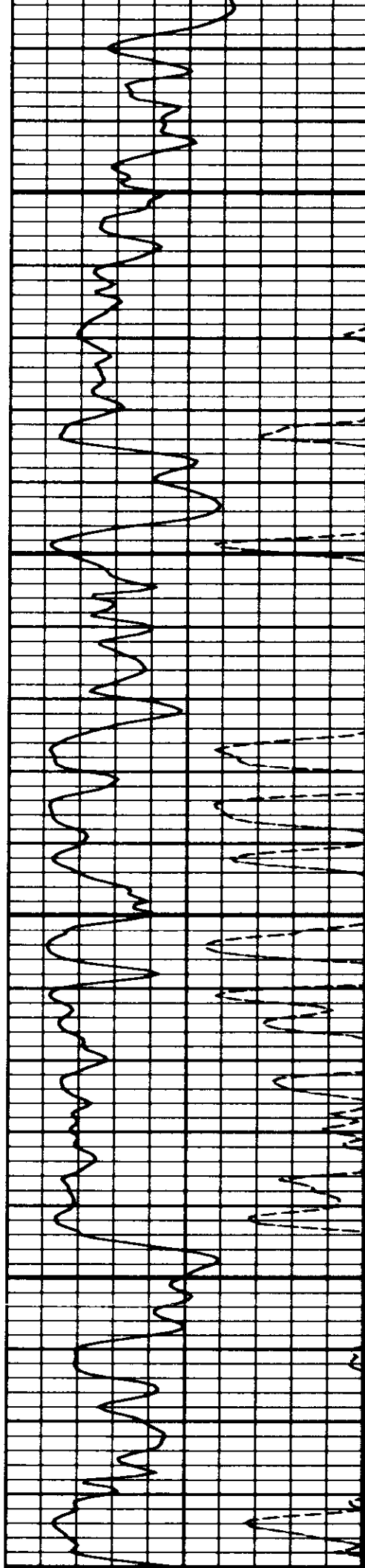


6400

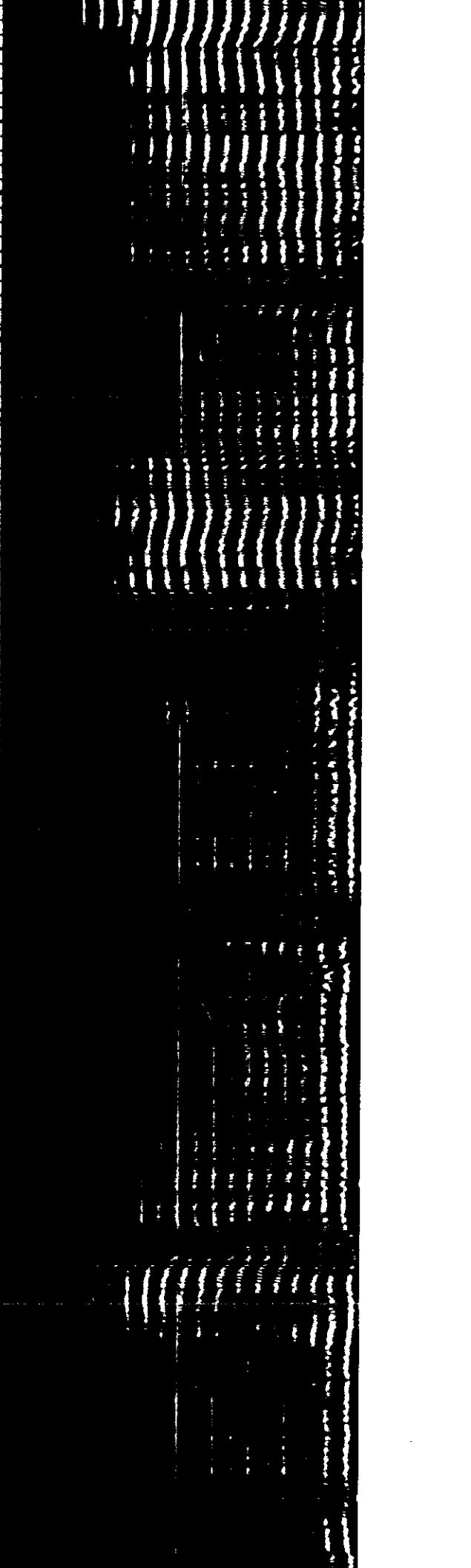


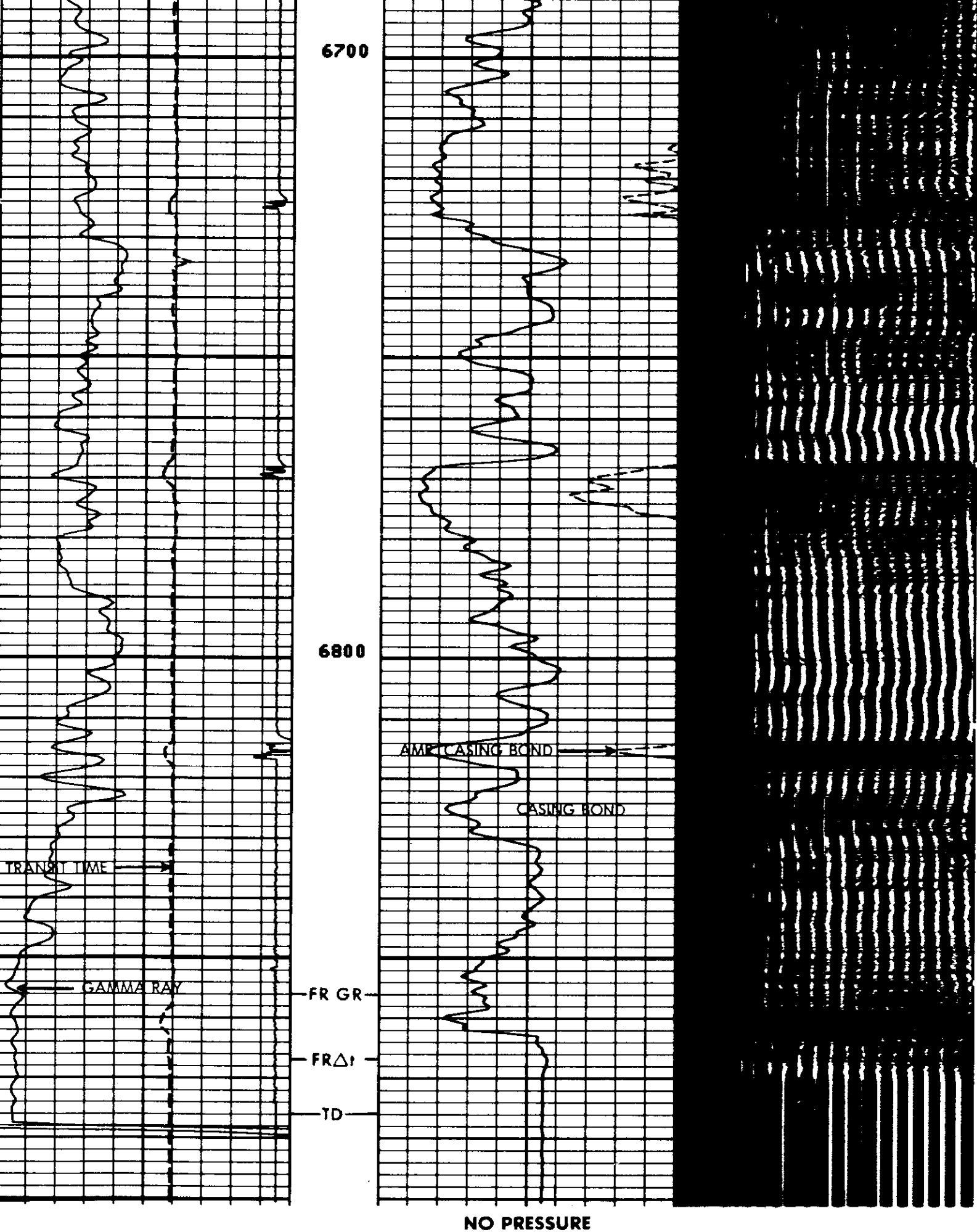


6500



6600





TT2 (US)				
400.00	200.00			
GR (GAPI)			SA2 (MV)	
0.0	150.00	0.0	20.000	
CCL			SA2 (MV)	
-19.00	1.0000	0.0	100.00	

SENSOR MEASURE POINT TO TOOL ZERO

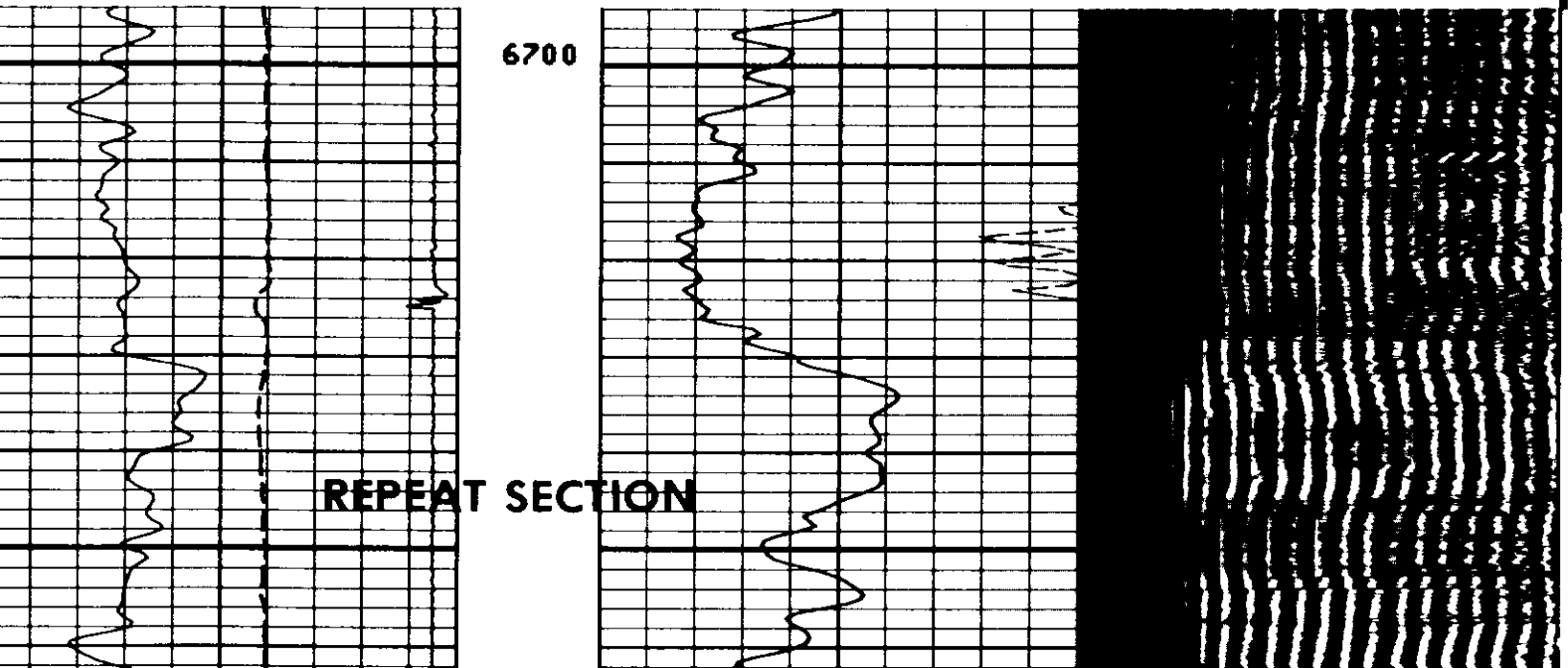
DT	8.5	FEET	GR	19.3	FEET
TT2	8.5	FEET	TT1	8.5	FEET
SA1	8.5	FEET	T0	0.0	FEET
TENS	8.5	FEET	SA2	8.5	FEET
CCL	24.0	FEET			

PARAMETERS

NAME	VALUE	UNIT	NAME	VALUE	UNIT
CSTR	1500.00	PSIA	CWEI	20.0000	LB/F
WSV1	WF1		DWS	16	
DSIN	5	US	DDEL	200	US
SA2G	.340000		DWCD	512	
CDTS	100.000		SA1G	1.00000	
DTF	189.000	US/F	DTM	56.0000	US/F
BHS	CASE		CSIZ	5.50000	IN
BS	8.00000	IN			

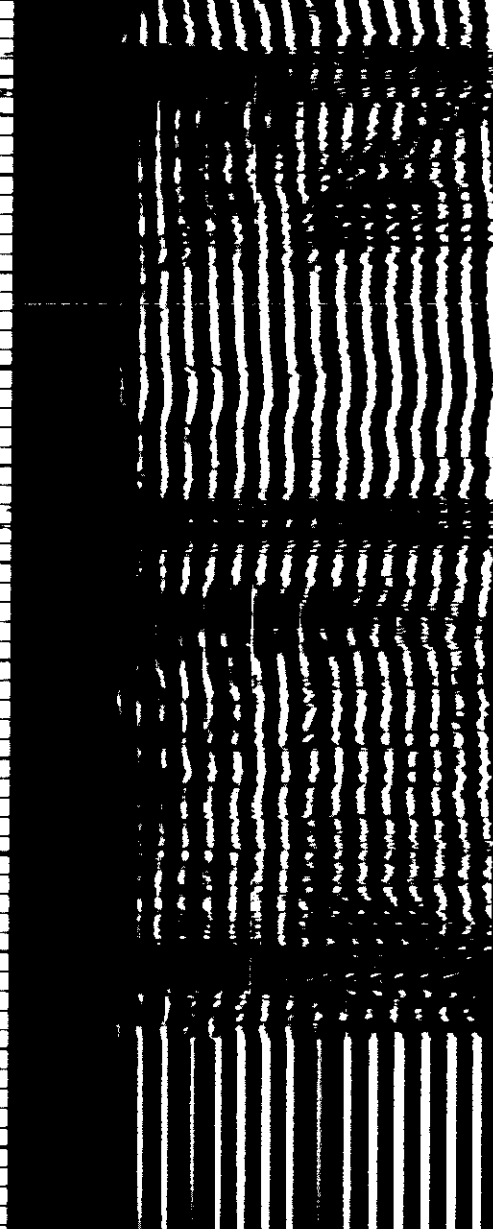
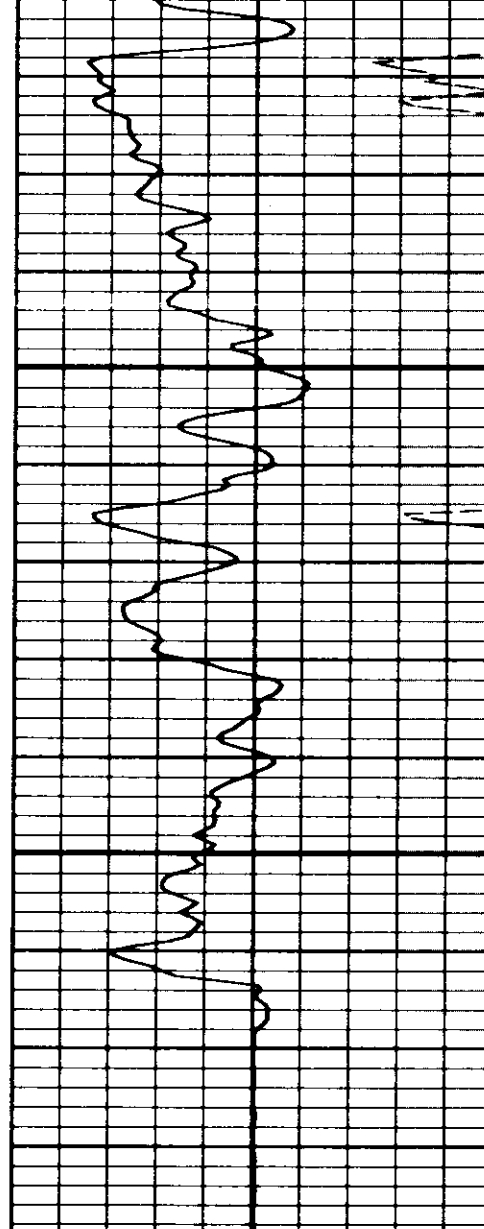
TT2 (US)				
400.00	200.00			
GR (GAPI)			SA2 (MY)	
0.0	150.00	0.0	20.000	
CCL			SA2 (MY)	
-19.00	1.0000	0.0	100.00	

FILE 1 28-JAN-86 10:39





6800



FILE 1 28-JAN-86 10:34

TT2 (US)		SA2 (MV)	
400.00	200.00	0.0	20.000
GR (GAPI)		SA2 (MV)	
0.0	150.00	0.0	100.00
CCL			
-19.00	1.0000		

SENSOR MEASURE POINT TO TOOL ZERO

DT	8.5	FEET	GR	19.3	FEET
TT2	8.5	FEET	TT1	8.5	FEET
SA1	8.5	FEET	T0	0.0	FEET
TENS	8.5	FEET	SA2	8.5	FEET
CCL	24.0	FEET			

PARAMETERS

NAME	VALUE	UNIT	NAME	VALUE	UNIT
CSTR	1500.00	PSIA	CWEI	20.0000	LB/F
WSV1	WF1		DWS	16	
DSIN	5	US	DDF1	200	US

DOIN 5 US
SA2G .340000
CDTS 100.000
DTF 189.000 US/F
BHS CASE
BS 8.00000 IN

DBEL 200 US
DWCD 512
SA1G 1.00000
DTM 56.0000 US/F
CSIZ 5.50000 IN