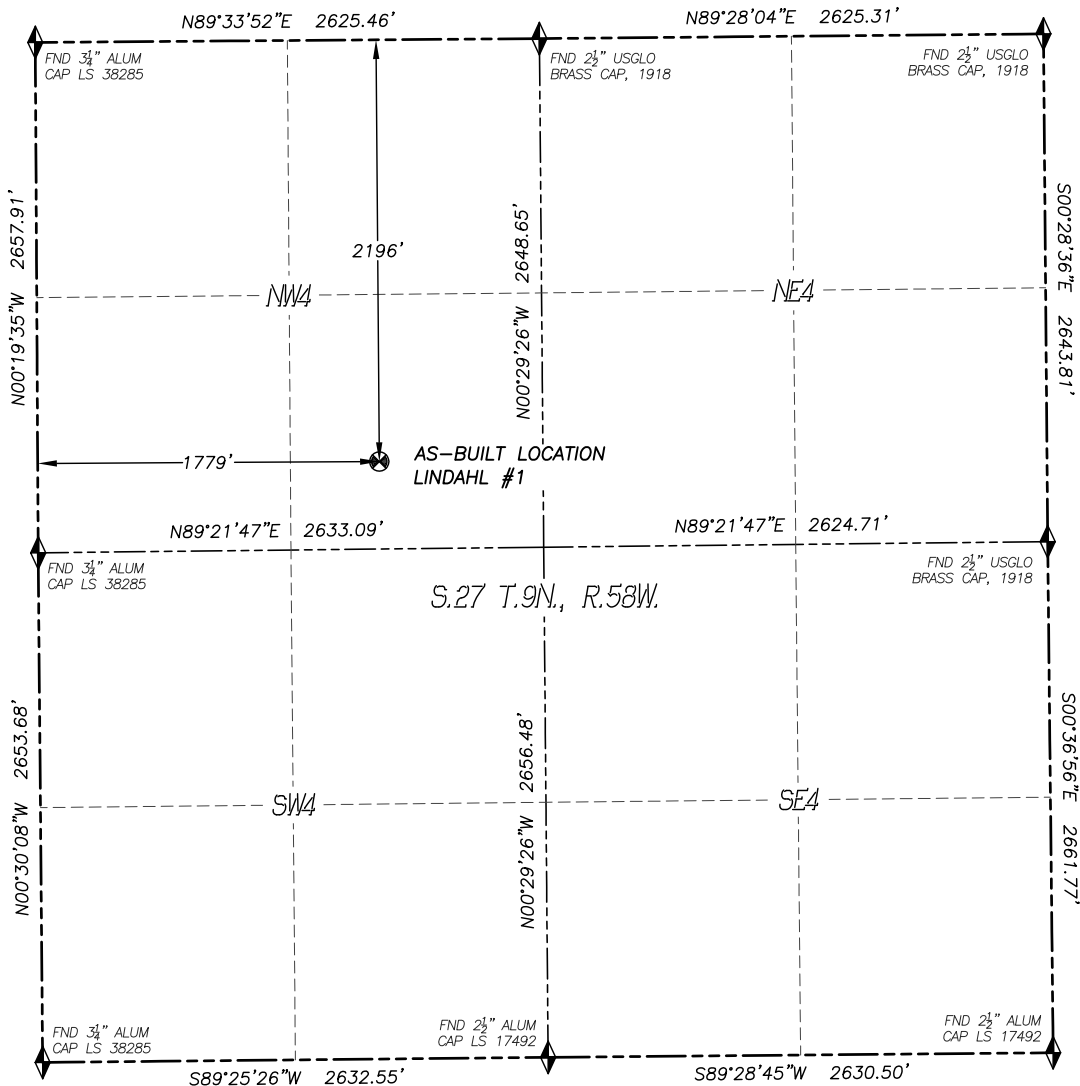


# WELL AS-BUILT SURVEY

## LINDAHL #1

SECTION: 27  
TOWNSHIP: 9N  
RANGE: 58W



0 500 1000  
SCALE: 1" = 1000'

LEGEND

- FOUND MONUMENT AS DESCRIBED
- PROPOSED WELL
- EXISTING WELL
- BOTTOM HOLE
- ABANDONED WELL
- CALCULATED POSITION

IN ACCORDANCE WITH A REQUEST FROM REGGY GRAY OF NOBLE ENERGY INC., DALEY LAND SURVEYING, INC. HAS DETERMINED THE SURFACE LOCATION OF THE LINDAHL #1 WELL TO BE 2196' FNL, 1779' FWL, AS MEASURED AT NINETY (90) DEGREES FROM THE SECTION LINES OF SECTION 27, TOWNSHIP 9 NORTH, RANGE 58 WEST, OF THE 6TH PRINCIPAL MERIDIAN, WELD COUNTY, COLORADO.

I HEREBY STATE THAT THIS WELL AS-BUILT WAS PREPARED BY ME OR UNDER MY DIRECT SUPERVISION, THAT THE WORK WAS COMPLETED ON 6/6/2016 FOR AND ON BEHALF OF NOBLE ENERGY, INC., AND THAT THIS MAP DOES NOT REPRESENT A BOUNDARY SURVEY, IT IS NOT A LAND SURVEY PLAT OR AN IMPROVEMENT SURVEY PLAT AND IT IS NOT TO BE RELIED UPON FOR THE ESTABLISHMENT OF FENCE, BUILDING OR OTHER FUTURE IMPROVEMENT LINES.

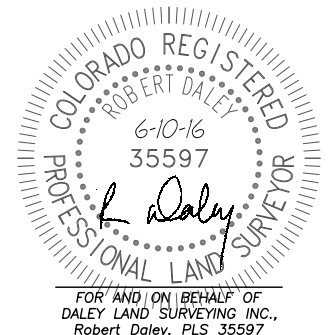
### NOTES:

- 1) BEARINGS FOR THIS MAP ARE ASSUMED AND BASED UPON GPS OBSERVATIONS MADE BETWEEN MONUMENTS LOCATED AT THE NORTHWEST CORNER AND WEST QUARTER CORNER OF SECTION 27, T.9N., R.58W.
- 2) HORIZONTAL DATUM IS NAD83.
- 3) VERTICAL DATUM IS NAVD88 AND ORIGINATES FROM THE LOCAL C.O.R.S. NETWORK, UTILIZING THE GEOID12A MODEL.
- 4) ELEVATION SHOWN IS AT TOP OF CASING PLUG, 0.5'± BELOW EXISTING GROUND ELEVATION.
- 5) SURFACE USE: RANGE LAND.
- 6) INST. OPERATOR: TREVOR DALEY.

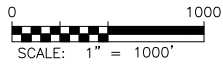
### NAD 83 LATITUDE AND LONGITUDE

#### SURFACE LOCATION:

LATITUDE: N40.72346°  
LONGITUDE: W103.85298°  
ELEV: 4756'  
PDOP: 1.3  
QTR/QTR: SE4/NW4

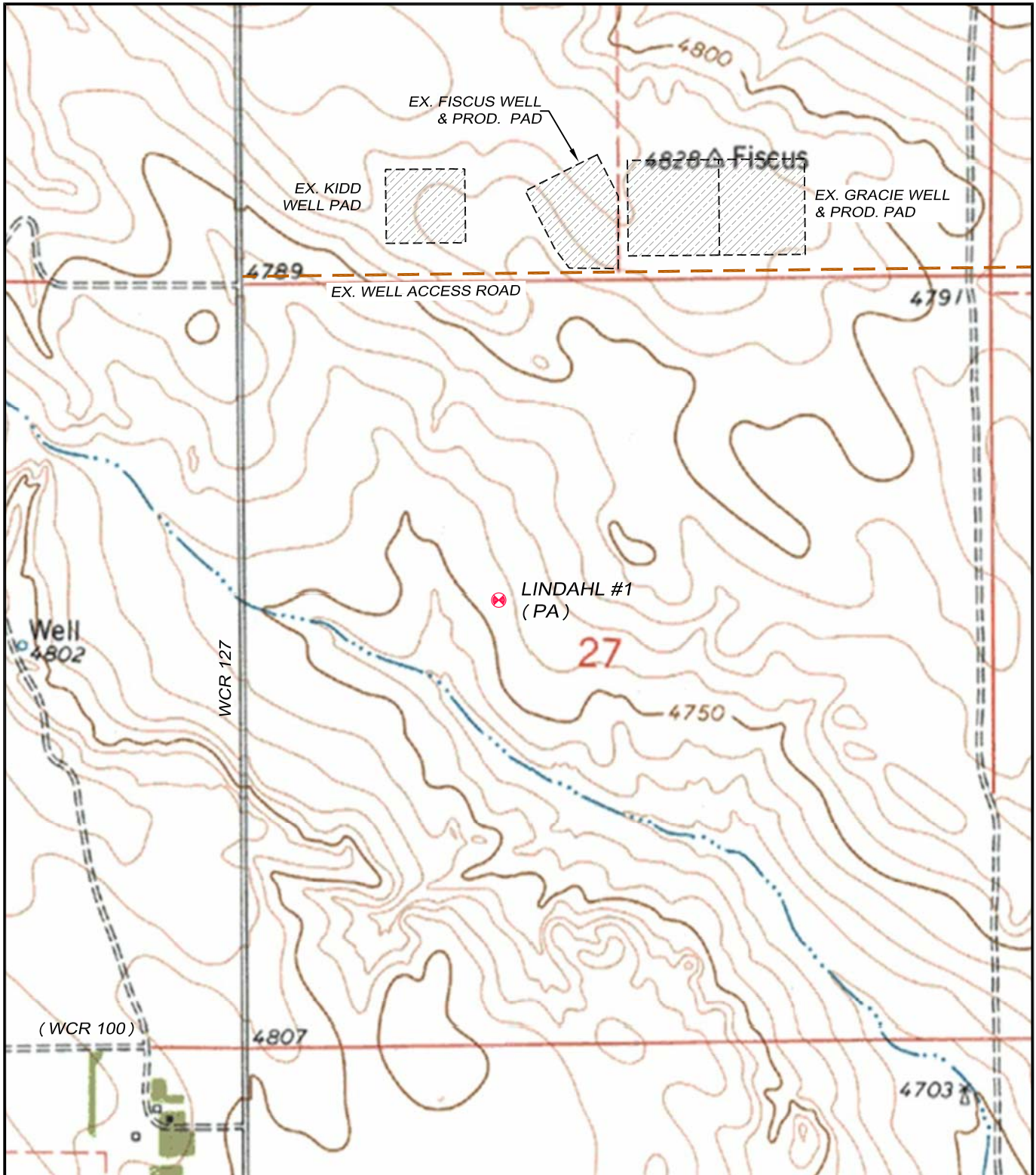


SHEET 1 OF 1



# ACCESS ROAD MAP

## LINDAHL #1



DALEY LAND SURVEYING, INC. 970.302.4159

# ACCESS ROAD MAP LINDAHL #1

SECTION: 27  
TOWNSHIP: 9N  
RANGE: 58W

