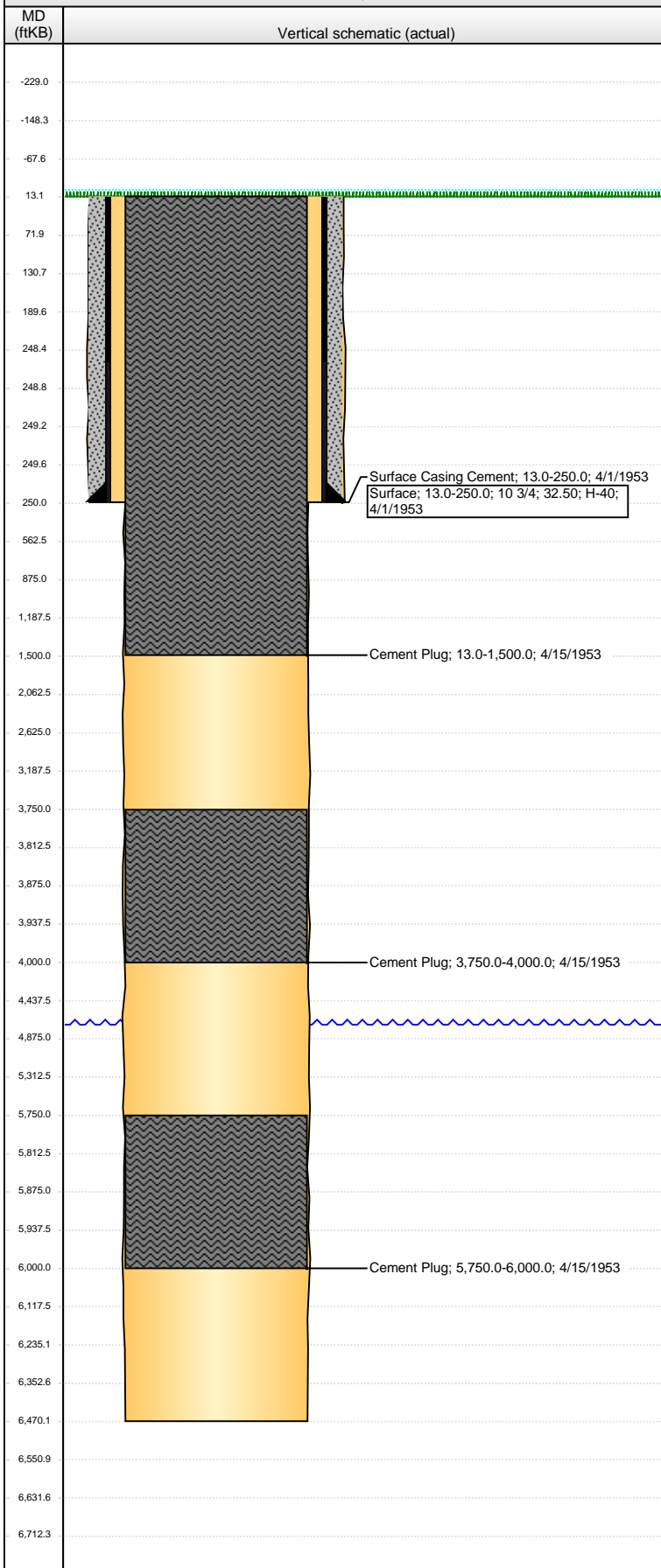


Wellbore Schematic Input Report

Well Name: LINDAHL 1

VERTICAL - ORIGINAL HOLE, 9/22/2016 1:30:36 PM



Well Header					
API	Business Unit	District	Well Config		
05-123-05621	DJ BASIN	15	VERTICAL		
Original KB Elevation (ft)	KB - GL / MSL (ftKB)	Spud Date	P & A Date		
4,717	13.00	4/1/1953	4/15/1953		
Comment					
NO SURFACE HOLE WIDTH GIVEN, USED 12 1/4"					
Directions To Well					
Congressional Location					
Quarter 3	Quarter 4	Section	Township	Twtnshp N/S Dir	Range E/W Dir
		27	9	N	58 W
Bottom Hole Location					
North-South Distance (ft)		From N or S Line		East-West Distance (ft)	
				From E or W Line	
Plug Back Total Depths					
Date	Depth (ftKB)	Method		Com	
Wellbore Sections					
Section Des		Size (in)	Act Top, MD (ftKB)		Act Btm, MD (ftKB)
SURFACE		12 1/4	13		250
PRODUCTION		8 3/4	250		6,470
Zone Statuses					
Zone Name	Status Date	Status	Fluid Type	Job	Prod Method
Casing Strings					
Surface, 250.0ftKB					
Casing Description	Run Date	OD (in)	Wt/Len (l...	Grade	Top, MD (ft... MD (ftKB)
Surface	4/1/1953	10 3/4	32.50	H-40	13.0 250.0
Cement					
Description	Top Depth (ftKB)			Bottom Depth (ftKB)	
Surface Casing Cement	13.0			250.0	
Description	Top Depth (ftKB)			Bottom Depth (ftKB)	
Cement Plug	5,750.0			6,000.0	
Description	Top Depth (ftKB)			Bottom Depth (ftKB)	
Cement Plug	3,750.0			4,000.0	
Description	Top Depth (ftKB)			Bottom Depth (ftKB)	
Cement Plug	13.0			1,500.0	
Tubing Strings					
Tubing Description	Run Date	String...	ID (in)	Wt (lb/ft)	Grade
Perforation Data					
Zone	Bnch/St g	Entered Shot Total	Top (ftKB)	Btm (ftKB)	Date
Other In Hole					
Run Date	Des		OD (in)	Top (ftKB)	Btm (ftKB)
Logs					
Date	Type			Top, MD (ftKB)	Btm, MD (ftKB)