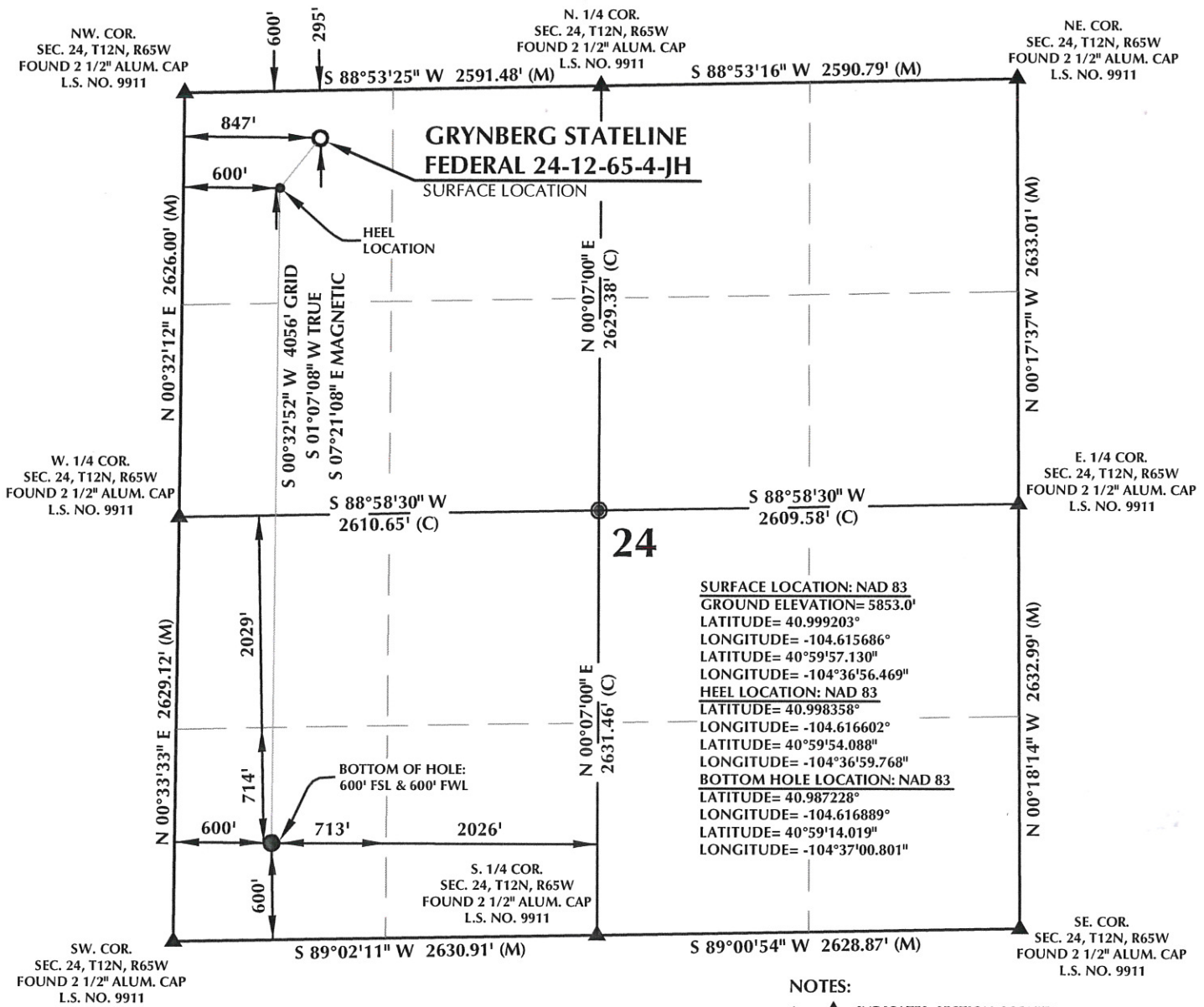


T12N, R65W

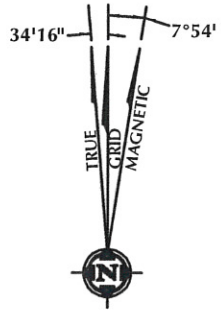


CERTIFICATE OF SURVEYOR:

THIS IS TO CERTIFY THAT THE ABOVE PLAT WAS PREPARED FROM FIELD NOTES OF ACTUAL SURVEY MADE BY ME OR UNDER MY SUPERVISION AND THAT THE SAME ARE TRUE AND CORRECT TO THE BEST OF MY KNOWLEDGE AND BELIEF. THIS CERTIFICATE DOES NOT REPRESENT A LAND SURVEY PLAT OR IMPROVEMENT SURVEY PLAT AS DEFINED BY C.R.S. 38-51-102 AND CANNOT BE RELIED UPON TO DETERMINE OWNERSHIP.

John R. Slaugh
 JOHN R. SLAUGH
 PROFESSIONAL LAND SURVEYOR
 COLORADO REGISTRATION NUMBER 18230
 2/8/16

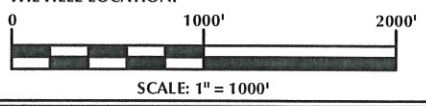
NOTICE: ACCORDING TO COLORADO STATE LAW YOU MUST COMMENCE ANY LEGAL ACTION BASED UPON ANY DEFECT IN THIS SURVEY WITHIN THREE YEARS AFTER YOU FIRST DISCOVER SUCH DEFECT. IN NO EVENT MAY ANY ACTION BASED UPON ANY DEFECT IN THIS SURVEY BE COMMENCED MORE THAN TEN YEARS FROM THE DATE ON THE CERTIFICATION SHOWN HEREON.



NOTE: MAGNETIC NORTH IS CURRENT AS OF 2/2/2016. MAGNETIC NORTH CHANGES WEST 0°06' PER YEAR.

NOTES:

- ▲ INDICATES SECTION CORNER
- INDICATES CALCULATED CORNER
- ELEVATION BASED ON NAVD88 (GEOID12B)
- BASIS OF BEARING DERIVED FROM COLORADO COORDINATE SYSTEM OF 1983 NORTH ZONE.
- ALL MEASURED DISTANCES ARE GRID.
- COMBINED SCALE FACTOR: .99976471
- OPERATOR: ROB WILSON / PDOP = 1.3
- SEE ADDENDUM TO WELL LOCATION CERTIFICATE FOR EXISTING IMPROVEMENTS WITHIN 500' OF THE WELL PAD.
- WELL FOOTAGES ARE MEASURED AT RIGHT ANGLES TO THE SECTION LINES.
- THE BOTTOM OF HOLE BEARS S00°32'52"W, 4056' FROM THE HEEL LOCATION.



WELL PAD - GRYNBERG STATELINE FEDERAL 24-12-65-4-JH

GRYNBERG STATELINE FEDERAL 24-12-65-4-JH WELL LOCATION CERTIFICATE
 295' FNL & 847' FWL NWNW (SURFACE)
 600' FNL & 600' FWL NWNW (HEEL)
 600' FSL & 600' FWL SWSW (BOTTOM)
 LOCATED IN SECTION 24
 T12N, R65W, 6TH P.M.
 WELD COUNTY, COLORADO

Grynberg Petroleum Company
 3600 S. Yosemite, Suite 900
 Denver, Colorado 80237

CONSULTING, LLC

SHERIDAN OFFICE: 1095 Saberton Avenue, Sheridan, Wyoming 82801, Phone 307-674-0609
 LOVELAND OFFICE: 1635 Foxtrail Drive, Suite 204, Loveland, Colorado 80538, Phone 970-776-4331

DRAFTED BY: LMO	CHECKED BY: JRS
DATE DRAFTED: 2/2/16	DATE SURVEYED: 11/10/15
REVISED: 2/8/16	FILE NAME: 15-127

K:\GRYNBERG_PETROLEUM\2015\17_GRYNBERG STATELINE FED 24-12-65-4-JH.dwg, 2/9/2016 4:23:40 PM, rym