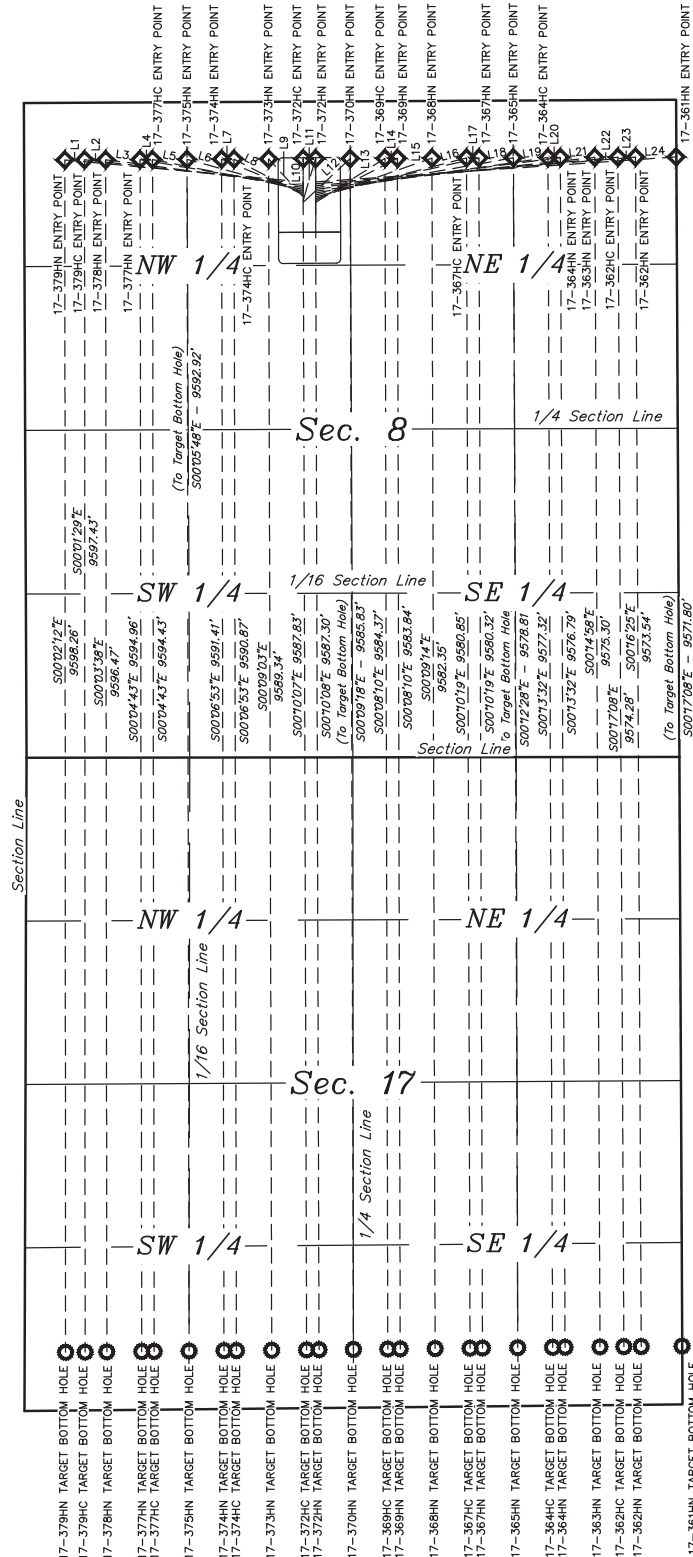


**LEGEND:**

- = TARGET BOTTOM HOLE.
◇ = ENTRY POINT.

LINE TABLE		
LINE	DIRECTION	LENGTH
L1	N84°42'22"W	1925.98'
L2	N83°43'23"W	1769.36'
L3	N82°30'08"W	1603.62'
L4	N80°14'27"W	1331.16'
L5	N78°45'07"W	1235.74'
L6	N74°35'51"W	968.95'
L7	N67°21'21"W	710.89'
L8	N62°31'48"W	627.00'
L9	N42°20'07"W	413.40'
L10	N00°04'11"W	321.90'
L11	N16°26'09"E	351.69'
L12	N46°55'25"E	517.95'
L13	N57°34'49"E	661.51'
L14	N62°40'56"E	741.16'
L15	N70°46'30"E	991.81'
L16	N75°33'28"E	1254.21'
L17	N77°12'52"E	1348.11'
L18	N79°51'56"E	1618.07'
L19	N81°45'22"E	1890.39'
L20	N82°33'08"E	1987.61'
L21	N83°49'54"E	2261.09'
L22	N84°37'46"E	2444.80'
L23	N85°14'22"E	2585.10'
L24	N86°02'23"E	2910.20'

**NOTES:****GREAT WESTERN OPERATING COMPANY**

OCHO LD PAD
NE 1/4 NW 1/4, SECTION 8, T1S, R67W, 6th P.M.
ADAMS COUNTY, COLORADO

SURVEYED BY	Z.B., G.W.	05-24-16	SCALE
DRAWN BY	K.B.	06-09-16	1" = 1000'
MULTI-WELL PLAN		FIGURE #5	



UELS, LLC
Corporate Office * 85 South 200 East
Vernal, UT 84078 * (435) 789-1017