

1801 Broadway  
Suite 500  
Denver, Colorado 80202



Allison Schieber  
Regulatory Technician  
Tel: 303.398.0355  
E-mail:  
regulatorypermitting@gwogco.com

September 22, 2016

Colorado Oil and Gas Conservation Commission  
1120 Lincoln Street, Suite 801  
Denver, Colorado 80203  
RE: **Proposed Wellbore Spacing Unit**  
Marcus LD 11-373HN  
Niobrara New Drill

SESE Section 34  
Township 1N, Range 67W, 6th P.M.  
Weld County, Colorado

Dear Director:

Great Western Operating Company, LLC is planning to drill the above captioned well in accordance with the provisions of COGCC Rule 318A.e.

Great Western proposed wellbore spacing unit consists of:

- **1S-67W Sec 11 - W2**
- **1S-67W Sec 2 - W2**
- **640 Acres**

The 30-day notification time period has passed and we have not received any objections to such well locations or proposed spacing unit, therefore Great Western hereby requests the Director to approve the above mentioned well. Great Western Operating Company, LLC respectfully requests that the COGCC review the enclosed map illustrating the proposed wellbore spacing unit.

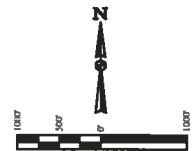
Respectfully,

*Allison Schieber*

Allison Schieber  
Regulatory Technician  
Great Western Operating Company, LLC

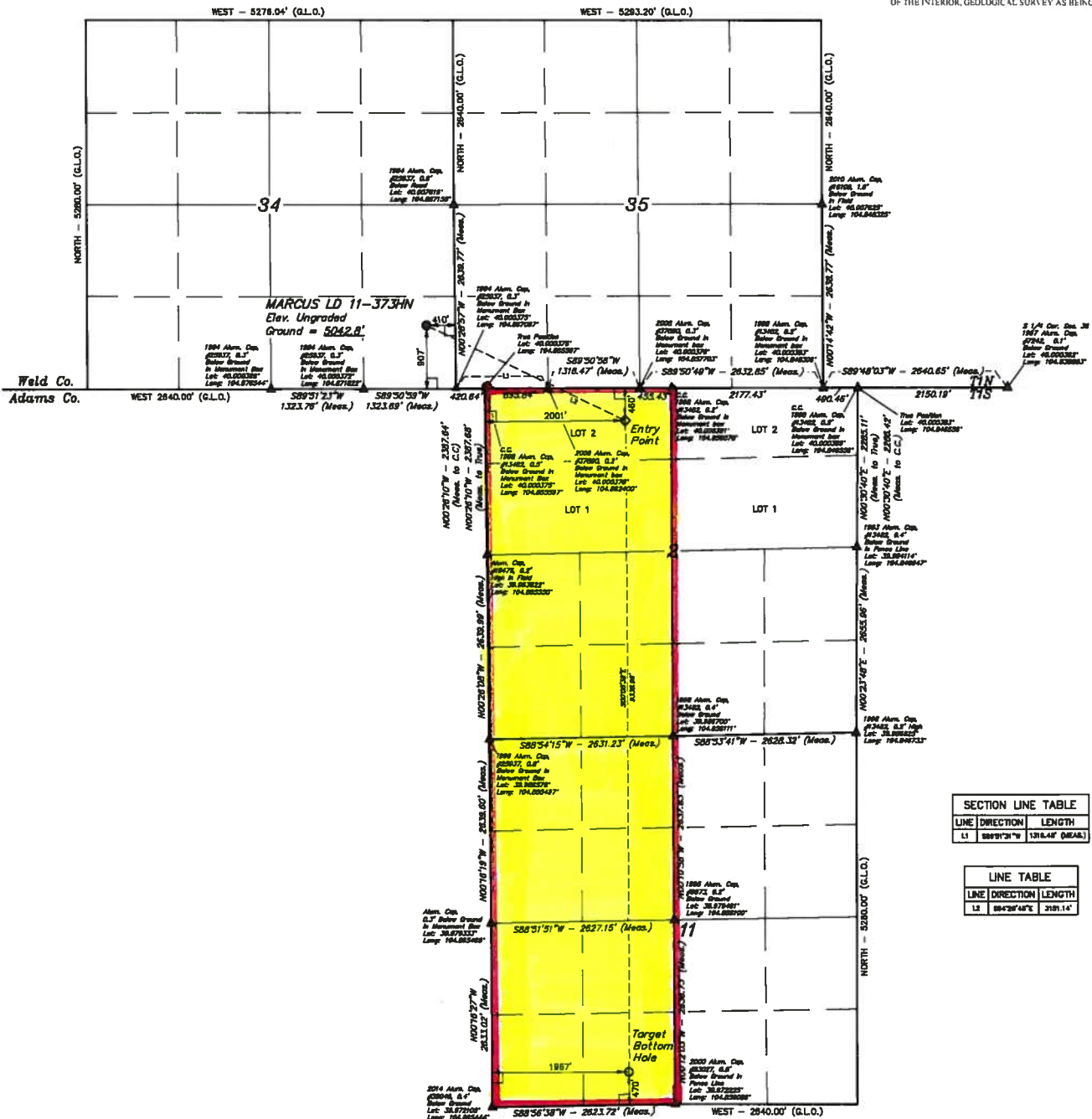
T1N, R67W, 6th P.M.

LEGEND:  
 - BY SYMBOL  
 - PROPOSED WELLHEAD  
 - ENTRY POINT  
 - TARGET BOTTOM HOLE  
 - SECTION CORNERS LOCATED



BASIS OF BEARINGS  
 BASIS OF ELEVATION

BENCHMARK JR 31 5028 LOCATED IN THE SW 1/4 SE 1/4 OF SECTION 18, T1N, R67W, 6th P.M. TAKEN FROM 1988 PUBLISHED DATUM BY THE UNITED STATES DEPARTMENT OF THE INTERIOR, GEOLOGICAL SURVEY AS BEING 5023 FEET.



SECTION LINE TABLE		
LINE	DIRECTION	LENGTH
11	S89°12'W	1716.48' (MEAS.)

LINE TABLE		
LINE	DIRECTION	LENGTH
12	S89°12'W	3181.14'



GREAT WESTERN OIL & GAS COMPANY  
 MARCUS LD 11-373H  
 SE 1/4 SE 1/4, SECTION 34, T1N, R67W, 6th P.M.  
 WELD COUNTY, COLORADO

SURVEYED BY JARED CHRISTOPHER, J.C.		DATE 11-26-14
DRAWN BY J.W.		DATE DRAWN 11-01-14
SCALE 1" = 1000'		REVISED 00-00-00
WELL LOCATION PLAT		

NAD 83 (TARGET BOTTOM HOLE)	NAD 83 (ENTRY POINT)	NAD 83 (FACE LOCATION)
LATITUDE = 39°52'35" (N 971460)	LATITUDE = 39°54'52" (N 999117)	LATITUDE = 39°59'03" (N 1002641)
LONGITUDE = 104°51'20" (W 104 81841)	LONGITUDE = 104°51'18" (W 104 81847)	LONGITUDE = 104°51'20" (W 104 81841)
NAD 83 (TARGET BOTTOM HOLE)	NAD 83 (ENTRY POINT)	NAD 83 (FACE LOCATION)
LATITUDE = 39°52'41" (N 971530)	LATITUDE = 39°54'58" (N 999115)	LATITUDE = 39°59'03" (N 1002641)
LONGITUDE = 104°51'28" (W 104 819003)	LONGITUDE = 104°51'28" (W 104 819011)	LONGITUDE = 104°51'28" (W 104 819011)