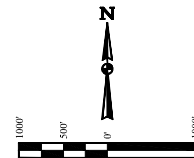


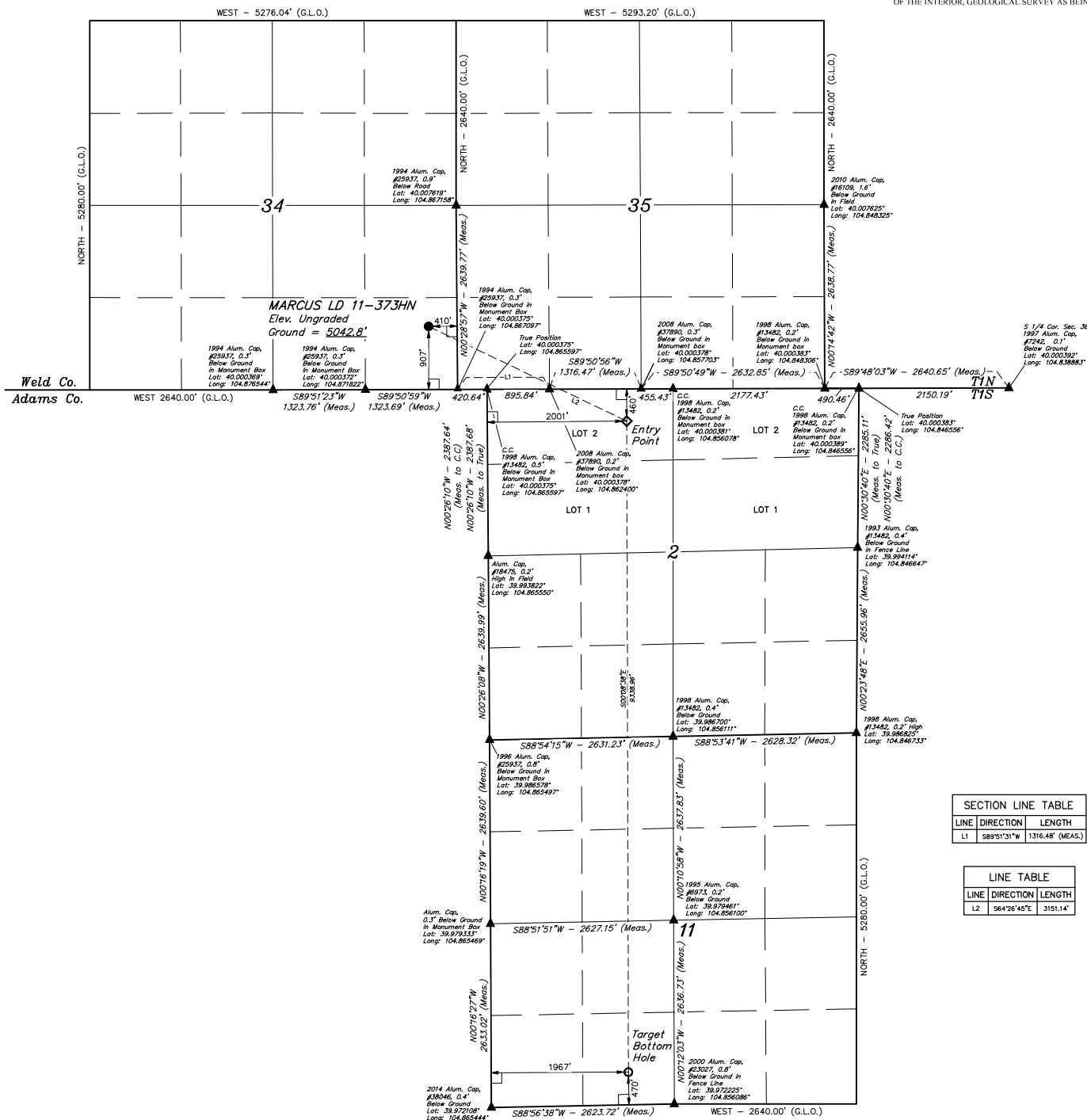
- LEGEND:**
- 90° SYMBOL
 - PROPOSED WELLHEAD
 - ENTRY POINT
 - TARGET BOTTOM HOLE
 - ▲ SECTION CORNERS LOCATED

T1N, R67W, 6th P.M.



BASIS OF BEARINGS
BASIS OF BEARINGS IS A G.P.S. OBSERVATION

BASIS OF ELEVATION
BENCHMARK JR 53 5026 LOCATED IN THE SW 1/4 SE 1/4 OF SECTION 18, T1N, R68W, 6th P.M., TAKEN FROM 1988 PUBLISHED DATUM BY THE UNITED STATES DEPARTMENT OF THE INTERIOR, GEOLOGICAL SURVEY AS BEING 5028 FEET.



SECTION LINE TABLE		
LINE	DIRECTION	LENGTH
L1	S89°51'51"W	1316.48' (MEAS.)

LINE TABLE		
LINE	DIRECTION	LENGTH
L2	S64°26'45"E	3151.14'

THIS IS TO CERTIFY THAT THE ABOVE IS A TRUE AND CORRECT COPY OF THE ORIGINAL SURVEY RECORDS AND THAT THE SAME ARE TRUE AND CORRECT TO THE BEST OF MY KNOWLEDGE AND BELIEF.

RECORDED AND RETURNED TO THE SURVEYOR
RECORDS NO. 3038
STATUTORY NOTICE JAN 14 2014

GREAT WESTERN OIL & GAS COMPANY

MARCUS LD 11-373HN
SE 1/4 SE 1/4, SECTION 34, T1N, R67W, 6th P.M.
WELD COUNTY, COLORADO

UELS, LLC
Corporate Office • 85 South 200 East
Vernal, UT 84078 • (435) 789-1017

PDOP = 1.4



SAD 83 (TARGET BOTTOM HOLE)	SAD 83 (ENTRY POINT)	SAD 83 (SURFACE LOCATION)
LATITUDE = 39°58'24.33" (29.973486)	LATITUDE = 39°59'56.82" (39.999117)	LATITUDE = 40°00'10.31" (40.002864)
LONGITUDE = 104°51'30.36" (104.858433)	LONGITUDE = 104°51'30.41" (104.858447)	LONGITUDE = 104°52'06.89" (104.868581)
SAD 27 (TARGET BOTTOM HOLE)	SAD 27 (ENTRY POINT)	SAD 27 (SURFACE LOCATION)
LATITUDE = 39°58'24.61" (29.973503)	LATITUDE = 39°59'56.85" (39.999133)	LATITUDE = 40°00'10.35" (40.002878)
LONGITUDE = 104°51'28.45" (104.857963)	LONGITUDE = 104°51'28.59" (104.857971)	LONGITUDE = 104°52'04.99" (104.868053)

SURVEYED BY: JARED CHRISTOPHER, J.C. DATE: 11-20-14
DRAWN BY: J.W. DATE DRAWN: 12-01-14
SCALE: 1" = 1000' REVISED: 06-04-00

WELL LOCATION PLAT