

1801 Broadway  
Suite 500  
Denver, Colorado 80202



Allison Linz  
Regulatory Technician  
Tel: 303.398.0355  
E-mail:  
regulatorypermitting@gwogco.com

September 21, 2016

Colorado Oil and Gas Conservation Commission  
1120 Lincoln Street, Suite 801  
Denver, Colorado 80203

RE: **Proposed Wellbore Spacing Unit**  
Marcus LD 11-372HC  
Niobrara New Drill

SESE Section 34  
Township 1N, Range 67W, 6th P.M.  
Weld County, Colorado

Dear Director:

Great Western Operating Company, LLC is planning to drill the above captioned well in accordance with the provisions of COGCC Rule 318A.e.

Great Western proposed wellbore spacing unit consists of:

- **1S-67W-Sec 11:W2**
- **1S-67W-Sec 2: W2**
- **640 Acres**

The 30 day notification time period has passed and we have not received any objections to such well locations or proposed spacing unit, therefore Great Western hereby requests the Director to approve the above mentioned well. Great Western Operating Company, LLC respectfully requests that the COGCC review the enclosed map illustrating the proposed wellbore spacing unit.

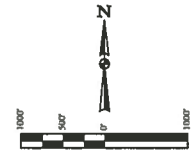
Respectfully,

*Allison Linz*

Allison Linz  
Regulatory Technician  
Great Western Operating Company, LLC

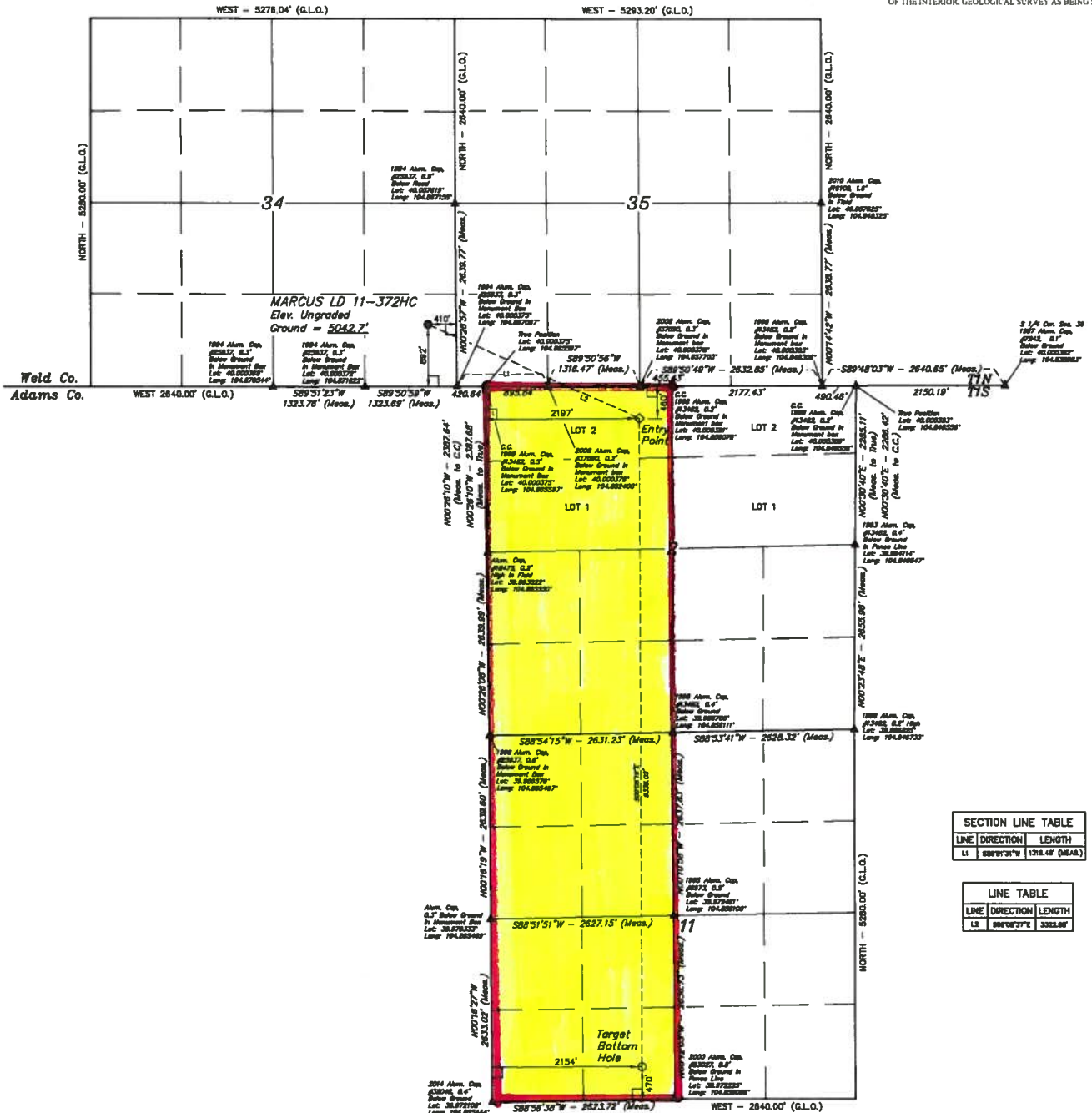
- LEGEND:**
- 1/4" SYMBOL
  - PROPOSED WELLHEAD
  - ENTRY POINT
  - TARGET BOTTOM HOLE
  - ▲ SECTION CORNERS LOCATED

T1N, R67W, 6th P.M.



**BASIS OF BEARINGS**  
BASIS OF BEARINGS IS A G.P.S. OBSERVATION  
**BASIS OF ELEVATION**

BENCHMARK JR 31 5025 LOCATED IN THE SW 1/4 SE 1/4 OF SECTION 18, T1N, R67W, 6th P.M., TAKEN FROM 1988 PUBLISHED DATUM BY THE UNITED STATES DEPARTMENT OF THE INTERIOR, GEOLOGICAL SURVEY AS BEING 5028 FEET



SECTION LINE TABLE		
LINE	DIRECTION	LENGTH
L1	88°07'31"W	1716.46' (MEAS.)

LINE TABLE		
LINE	DIRECTION	LENGTH
L2	88°07'31"W	3322.89'

THIS IS TO CERTIFY THAT THE ABOVE DESCRIBED SURVEY WAS MADE BY THE UNDERSIGNED AND THAT THE SAME ARE TRUE AND CORRECT TO THE BEST OF HIS KNOWLEDGE AND BELIEF.

*[Signature]*

STATE OF COLORADO  
COUNTY OF WELD  
REGISTERED PROFESSIONAL SURVEYOR  
NO. 32725  
EXPIRATION DATE 12/31/14

**GREAT WESTERN OIL & GAS COMPANY**  
MARCUS LD 11-372HC  
SE 1/4 SE 1/4, SECTION 34, T1N, R67W, 6th P.M.  
WELD COUNTY, COLORADO

PDOP = 1.4



UELS, LLC  
Corporate Office: 85 South 200 East  
Vernal, UT 84078 (435) 799-1817

NAD 83 (TARGET BOTTOM HOLE)	NAD 83 (ENTRY POINT)	NAD 83 (SURFACE LOCATION)	SURVEYED BY JARED CHRISTOPHER, J.C.	DATE 11-20-14
LATITUDE = 39°51'51" N (104 837234)	LATITUDE = 39°51'51" N (104 837234)	LATITUDE = 39°51'51" N (104 837234)	DRAWN BY J.W.	DATE DRAWN 12-01-14
LONGITUDE = 104°51'51" W (104 837234)	LONGITUDE = 104°51'51" W (104 837234)	LONGITUDE = 104°51'51" W (104 837234)	SCALE 1" = 1000'	REVISED 12-15-14
NAD 83 (TARGET BOTTOM HOLE)	NAD 83 (ENTRY POINT)	NAD 83 (SURFACE LOCATION)	WELL LOCATION PLAN	
LATITUDE = 39°51'51" N (104 837234)	LATITUDE = 39°51'51" N (104 837234)	LATITUDE = 39°51'51" N (104 837234)		
LONGITUDE = 104°51'51" W (104 837234)	LONGITUDE = 104°51'51" W (104 837234)	LONGITUDE = 104°51'51" W (104 837234)		